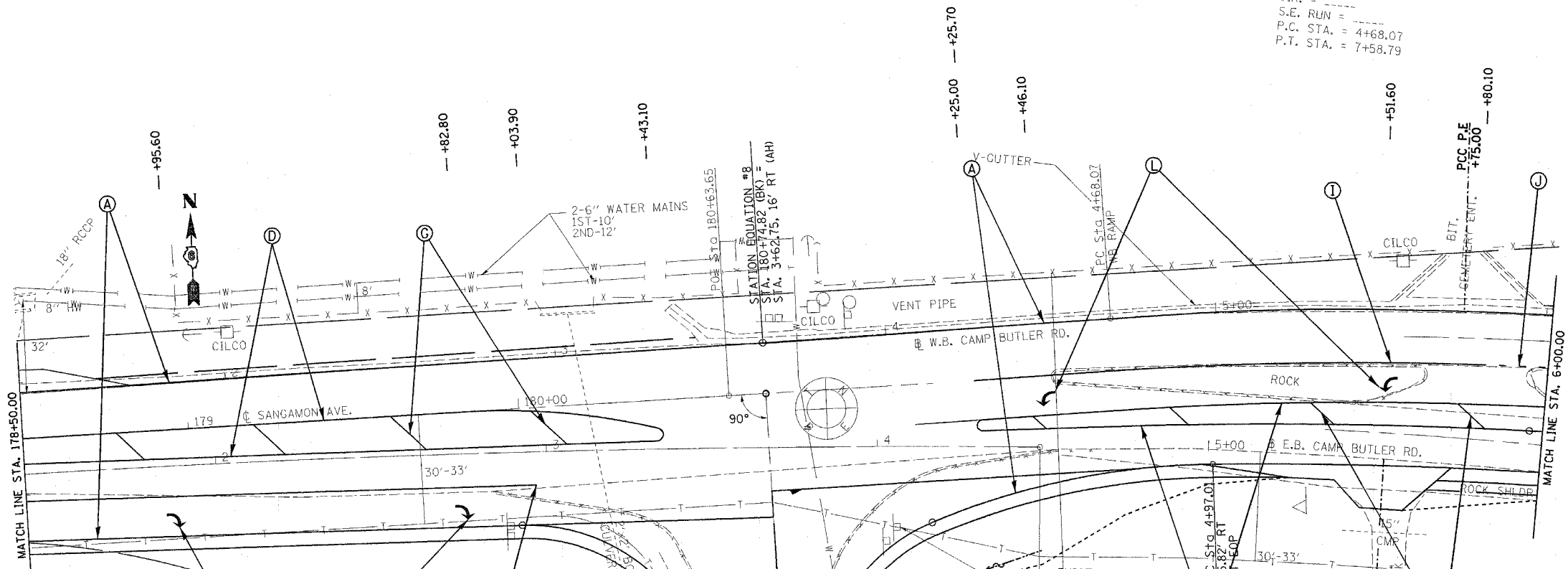


F.A.U. RTE.	SECTION	COUNTY	TOTAL SHEETS	SHEET NO.
*	**	SANGAMON	261	123

STA. 178+50.00 TO STA. 6+00.00  
 FED. ROAD DIST. NO. ILLINOIS FED. AID PROJECT  
 \*7978 (OLD US 36) & 7968 (CAMP BUTLER RD)  
 \*\*3R(BR, BR-1, BR-2), 19RS-8

EXIST. CURVE 221  
 PI STA. = 6+14.29  
 $\Delta = 15^\circ 11' 35''$  (RT)  
 $D = 5^\circ 13' 34''$   
 $R = 1,096.33'$   
 $T = 146.21'$   
 $L = 290.71'$   
 $E = 9.71'$   
 $e =$   
 $T.R. =$   
 $S.E. RUN =$   
 P.C. STA. = 4+68.07  
 P.T. STA. = 7+58.79



PAVEMENT MARKING LEGEND	
(THERMOPLASTIC)	
(A)	PAVEMENT MARKING - LINE - 5" WHITE (SOLID)
(B)	PAVEMENT MARKING - LINE - 5" YELLOW (SOLID)
(C)	PAVEMENT MARKING - LINE - 5" YELLOW (SKIP-DASH)
(D)	PAVEMENT MARKING - LINE - 5" DOUBLE YELLOW (SOLID)
(E)	PAVEMENT MARKING - LINE - 6" WHITE (SOLID)
(F)	PAVEMENT MARKING - LINE - 6" WHITE (SKIP-DASH)
(G)	PAVEMENT MARKING - LINE - 12" YELLOW (SOLID)
(PREFORMED PLASTIC, TYPE B)	
(H)	PAVEMENT MARKING - LINE - 5" WHITE (SKIP - DASH)
(I)	PAVEMENT MARKING - LINE - 6" WHITE (SOLID)
(J)	PAVEMENT MARKING - LINE - 6" WHITE (SKIP - DASH)
(K)	PAVEMENT MARKING - LINE - 24" WHITE (SOLID)
(L)	PAVEMENT MARKING - LETTERS & SYMBOLS WHITE (SOLID)
(PAINT)	
(M)	PAVEMENT MARKING - LINE - 5" WHITE (SOLID)
(N)	PAVEMENT MARKING - LINE - 8" WHITE (SOLID)
(O)	PAVEMENT MARKING - LINE - 5" WHITE (SKIP - DASH)
(P)	PAVEMENT MARKING - LINE - 5" YELLOW (SOLID)
(Q)	PAVEMENT MARKING - LINE - 5" YELLOW (SKIP - DASH)
(R)	PAVEMENT MARKING - LINE - 5" DOUBLE YELLOW (SOLID)

EXIST. CURVE 228  
 PI STA. = 2+78.77  
 $\Delta = 4^\circ 19' 30''$  (RT)  
 $D = 1^\circ 16' 07''$   
 $R = 4,516.13'$   
 $T = 170.53'$   
 $L = 340.90'$   
 $E = 3.22'$   
 $e =$  (EXISTING)  
 P.C. STA. = 1+08.24  
 P.T. STA. = 4+49.14

55'-225'  
 11' O/S  
 PROP. CURVE RTE EOP  
 PI STA. = 6+93.51, 34.80' RT  
 $\Delta = 15^\circ 34' 56''$  (LT)  
 $D =$   
 $R = 1,383.80'$   
 $T = 189.34'$   
 $L = 376.34'$   
 $E = 12.89'$   
 $e =$  MATCH EXISTING  
 P.C. STA. = 4+97.01, 45.82' RT  
 P.T. STA. = 8+84.56, 49' RT

REVISIONS	
NAME	DATE

ILLINOIS DEPARTMENT OF TRANSPORTATION  
**PAVEMENT MARKING DETAILS**  
 F.A.U. Route 7978 (OLD US 36) &  
 F.A.U. Route 7968 (CAMP BUTLER RD)  
 Section: 3R(BR, BR-1, BR-2), 19RS-8  
 SANGAMON COUNTY  
 VERT. SCALE: HORIZ.  
 DATE: JULY 20, 2005  
 DRAWN BY: JWC  
 CHECKED BY: RSC

PLOT DATE = 11/2/2005  
 FILE NAME = c:\pavement\mkt\mkt.dgn  
 PLOT SCALE = 20.0000' / 1" IN  
 USER NAME = coj