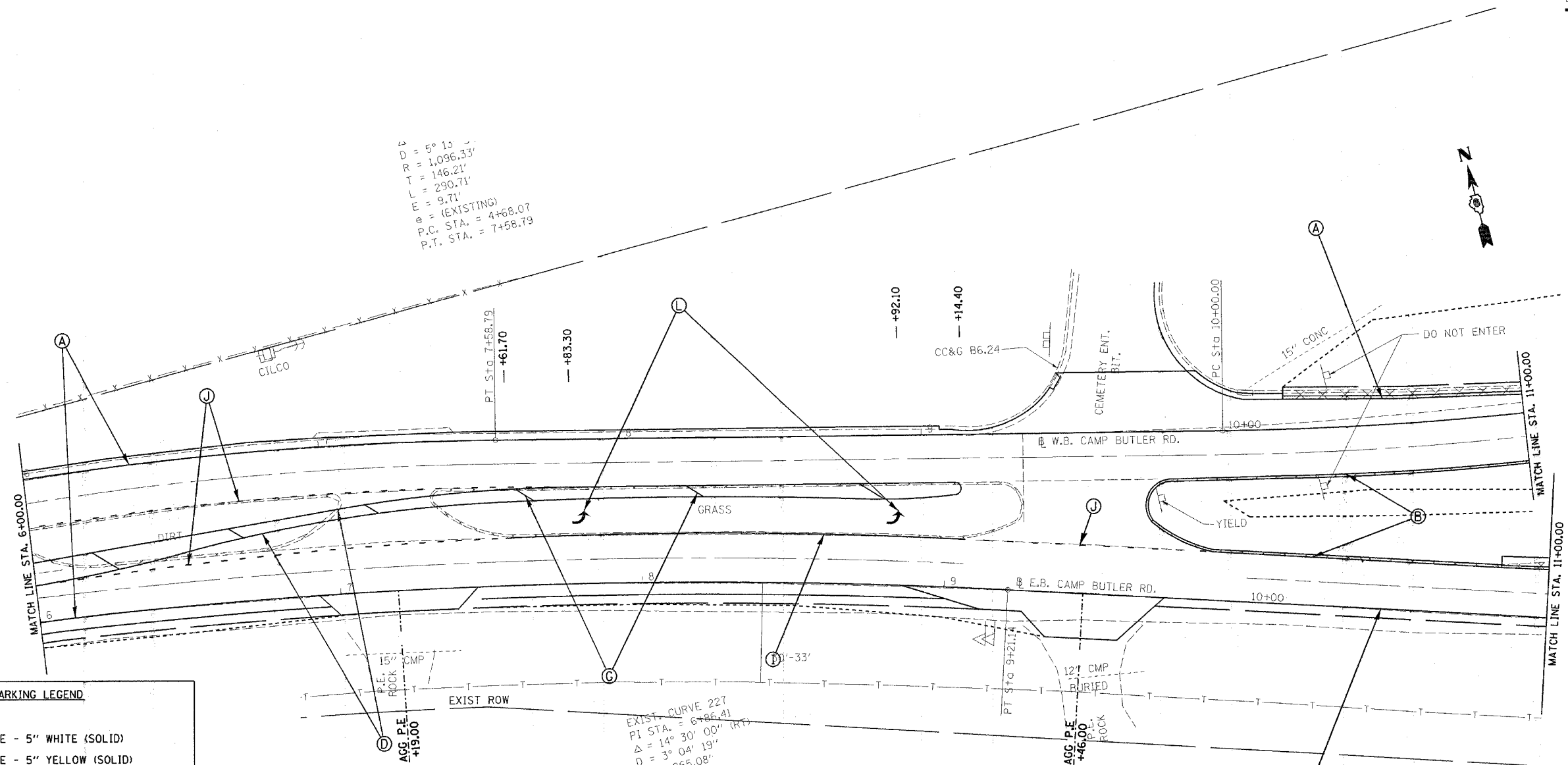


F.A.U. RTE.	SECTION	COUNTY	TOTAL SHEETS	SHEET NO.
*	**	SANGAMON	262	124
STA. 6+00.00		TO STA. 11+00.00		
FED. ROAD DIST. NO.		ILLINOIS FED. AID PROJECT		
*7978 (OLD US 36) & 7968 (CAMP BUTLER RD)				
**3R(BR, BR-1, BR-2), 19RS-8				



$\Delta = 5^\circ 15'$   
 $R = 1,096.33'$   
 $T = 146.21'$   
 $L = 290.71'$   
 $E = 9.71'$   
 $e = \text{(EXISTING)}$   
 $P.C. STA. = 4+68.07$   
 $P.T. STA. = 7+58.79$

EXIST. CURVE 227  
 $PI STA. = 6+86.41$   
 $\Delta = 14^\circ 30' 00''$   
 $D = 3^\circ 04' 19''$   
 $R = 1,865.08'$   
 $T = 237.27'$   
 $L = 472.00'$   
 $E = 15.03'$   
 $e = \text{(EXISTING)}$   
 $P.C. STA. = 4+49.14$   
 $P.T. STA. = 9+21.14$

**PAVEMENT MARKING LEGEND**

(THERMOPLASTIC)

- (A) PAVEMENT MARKING - LINE - 5" WHITE (SOLID)
- (B) PAVEMENT MARKING - LINE - 5" YELLOW (SOLID)
- (C) PAVEMENT MARKING - LINE - 5" YELLOW (SKIP-DASH)
- (D) PAVEMENT MARKING - LINE - 5" DOUBLE YELLOW (SOLID)
- (E) PAVEMENT MARKING - LINE - 6" WHITE (SOLID)
- (F) PAVEMENT MARKING - LINE - 6" WHITE (SKIP-DASH)
- (G) PAVEMENT MARKING - LINE - 12" YELLOW (SOLID)

(PREFORMED PLASTIC, TYPE B)

- (H) PAVEMENT MARKING - LINE - 5" WHITE (SKIP - DASH)
- (I) PAVEMENT MARKING - LINE - 6" WHITE (SOLID)
- (J) PAVEMENT MARKING - LINE - 6" WHITE (SKIP - DASH)
- (K) PAVEMENT MARKING - LINE - 24" WHITE (SOLID)
- (L) PAVEMENT MARKING - LETTERS & SYMBOLS WHITE (SOLID)

(PAINT)

- (M) PAVEMENT MARKING - LINE - 5" WHITE (SOLID)
- (N) PAVEMENT MARKING - LINE - 8" WHITE (SOLID)
- (O) PAVEMENT MARKING - LINE - 5" WHITE (SKIP - DASH)
- (P) PAVEMENT MARKING - LINE - 5" YELLOW (SOLID)
- (Q) PAVEMENT MARKING - LINE - 5" YELLOW (SKIP - DASH)
- (R) PAVEMENT MARKING - LINE - 5" DOUBLE YELLOW (SOLID)

REVISIONS	
NAME	DATE

ILLINOIS DEPARTMENT OF TRANSPORTATION  
**PAVEMENT MARKING DETAILS**  
 F.A.U. Route 7978 (OLD US 36) &  
 F.A.U. Route 7968 (CAMP BUTLER RD)  
 Section: 3R(BR, BR-1, BR-2), 19RS-8  
 SANGAMON COUNTY  
 SCALE: VERT. \_\_\_\_\_  
 HORIZ. \_\_\_\_\_  
 DATE: JULY 20, 2005  
 DRAWN BY: JWC  
 CHECKED BY: RSC

PLOT DATE = 11/22/2005  
 FILE NAME = c:\pavement\mktg\mktg5.dgn  
 USER NAME = cscjg