

F.A.U. RTE.	SECTION	COUNTY	TOTAL SHEETS	SHEET NO.
.	..	SANGAMON	261	125

STA. ...	TO STA. ...
FED. ROAD DIST. NO.	ILLINOIS FED. AID PROJECT
• 7978 (OLD US 36) & 7968 (CAMP BUTLER RD.) • 3R(BR, BR-1, BR-2), 19RS-8 ••• 7TH ST. ENTR. RAMP - STA 93+50.00 TO STA 6+50.00 ••• 7TH ST. EXIT RAMP - STA 92+00.00 TO STA 6+50.00	

PAVEMENT MARKING LEGEND

(THERMOPLASTIC)

- (A) PAVEMENT MARKING - LINE - 5" WHITE (SOLID)
- (B) PAVEMENT MARKING - LINE - 5" YELLOW (SOLID)
- (C) PAVEMENT MARKING - LINE - 5" YELLOW (SKIP-DASH)
- (D) PAVEMENT MARKING - LINE - 5" DOUBLE YELLOW (SOLID)
- (E) PAVEMENT MARKING - LINE - 6" WHITE (SOLID)
- (F) PAVEMENT MARKING - LINE - 6" WHITE (SKIP-DASH)
- (G) PAVEMENT MARKING - LINE - 12" YELLOW (SOLID)

(PREFORMED PLASTIC, TYPE B)

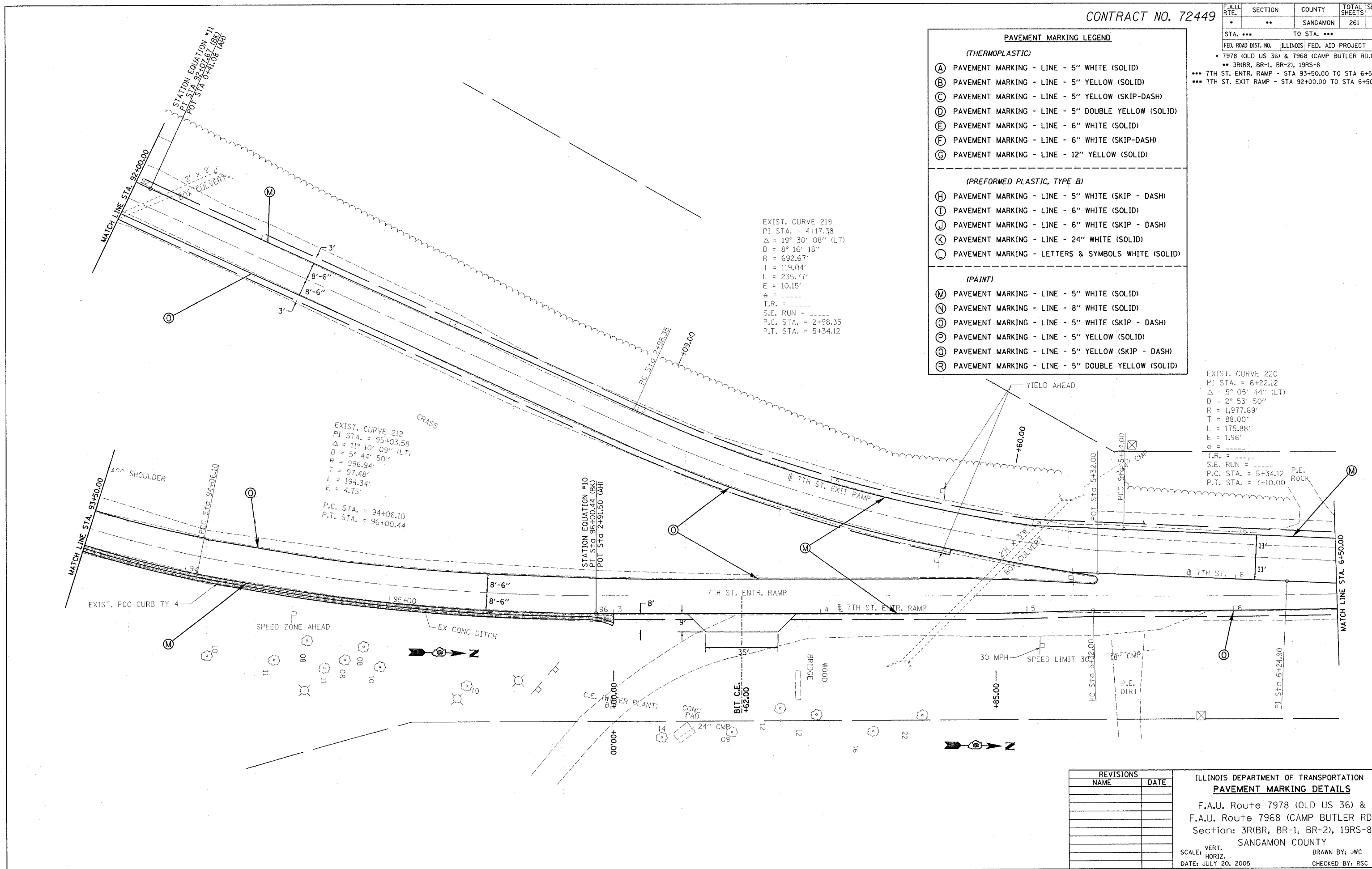
- (H) PAVEMENT MARKING - LINE - 5" WHITE (SKIP - DASH)
- (I) PAVEMENT MARKING - LINE - 6" WHITE (SOLID)
- (J) PAVEMENT MARKING - LINE - 6" WHITE (SKIP - DASH)
- (K) PAVEMENT MARKING - LINE - 24" WHITE (SOLID)
- (L) PAVEMENT MARKING - LETTERS & SYMBOLS WHITE (SOLID)

(PAINT)

- (M) PAVEMENT MARKING - LINE - 5" WHITE (SOLID)
- (N) PAVEMENT MARKING - LINE - 8" WHITE (SOLID)
- (O) PAVEMENT MARKING - LINE - 5" WHITE (SKIP - DASH)
- (P) PAVEMENT MARKING - LINE - 5" YELLOW (SOLID)
- (Q) PAVEMENT MARKING - LINE - 5" YELLOW (SKIP - DASH)
- (R) PAVEMENT MARKING - LINE - 5" DOUBLE YELLOW (SOLID)

EXIST. CURVE 219
 PI STA. = 4+17.38
 $\Delta = 19^\circ 30' 08''$ (LT)
 $D = 8^\circ 16' 18''$
 $R = 692.67'$
 $T = 119.04'$
 $L = 235.77'$
 $E = 10.15'$
 $e = \text{---}$
 $T.R. = \text{---}$
 $S.E. \text{ RUN} = \text{---}$
 $P.C. \text{ STA.} = 2+98.35$
 $P.T. \text{ STA.} = 5+34.12$

EXIST. CURVE 220
 PI STA. = 6+22.12
 $\Delta = 5^\circ 05' 44''$ (LT)
 $D = 2^\circ 53' 50''$
 $R = 1,977.69'$
 $T = 88.00'$
 $L = 175.88'$
 $E = 1.96'$
 $e = \text{---}$
 $T.R. = \text{---}$
 $S.E. \text{ RUN} = \text{---}$
 $P.C. \text{ STA.} = 5+34.12$
 $P.T. \text{ STA.} = 7+10.00$



REVISIONS	
NAME	DATE

ILLINOIS DEPARTMENT OF TRANSPORTATION
PAVEMENT MARKING DETAILS
 F.A.U. Route 7978 (OLD US 36) &
 F.A.U. Route 7968 (CAMP BUTLER RD)
 Section: 3R(BR, BR-1, BR-2), 19RS-8
 SANGAMON COUNTY

SCALE: VERT. _____ DRAWN BY: JWC
 HORIZ. _____ CHECKED BY: RSC
 DATE: JULY 20, 2005

(7TH ST. ENT/EXIT RAMP)

PLOT DATE = 11/27/2005
 FILE NAME = s:\pavement\mktg\652102\shp\pavementmktg\02238.dgn
 PLOT SCALE = 28.0000" = 1" IN.
 USER NAME = coxj