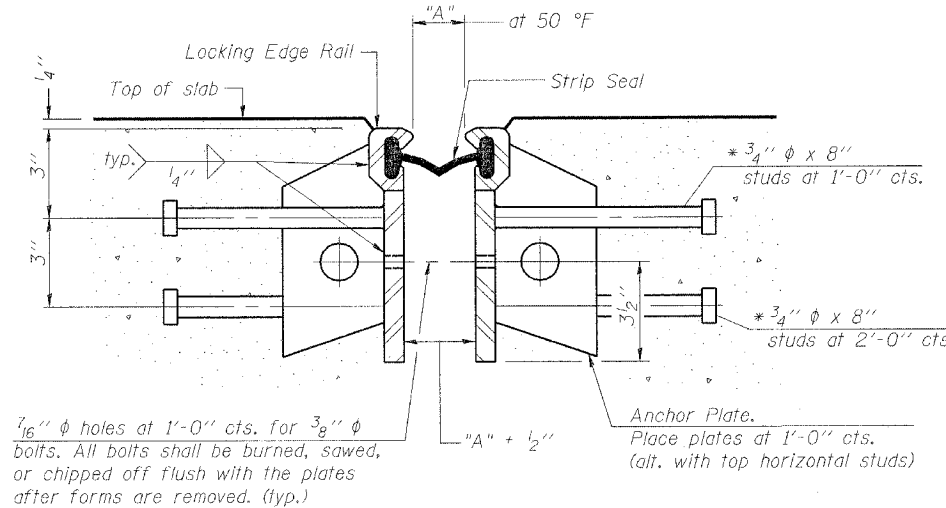


SECTION THRU ROLLED RAIL EXP. JOINT



SECTION THRU WELDED RAIL EXP. JOINT

GENERAL NOTES

The strip seal shall be made continuous and shall have a minimum thickness of 1/4". The configuration of the strip seal shall match the configuration of the Locking Edge Rails.

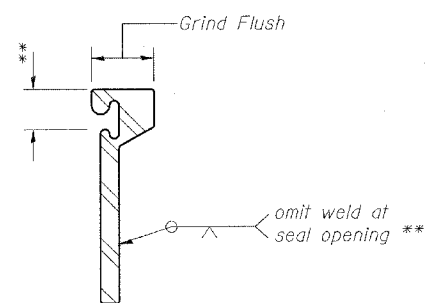
The height and thickness of the Locking Edge Rails shown are minimum dimensions. The actual configuration of the Locking Edge Rails and matching strip seal may vary from manufacturer to manufacturer. Flanged edge rails will not be allowed.

Locking Edge Rails may be spliced at slope discontinuities and stage construction joints.

The manufacturer's recommended installation methods shall be followed.

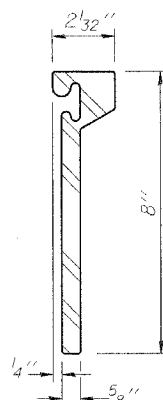
The strip seal joint shall have a rated movement equal to 4".

* Granular or solid flux filled headed studs conforming to Article 1006.32 of the Std. Specs., automatically end welded.

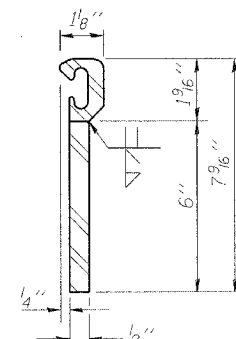


LOCKING EDGE RAIL SPLICE

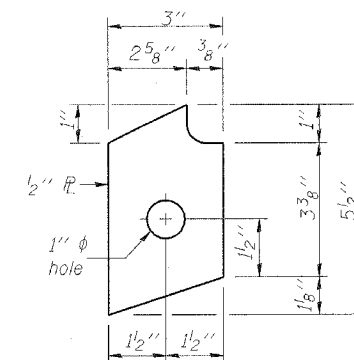
The inside of the locking edge rail groove shall be free of weld residue.



ROLLED (EXTRUDED) RAIL



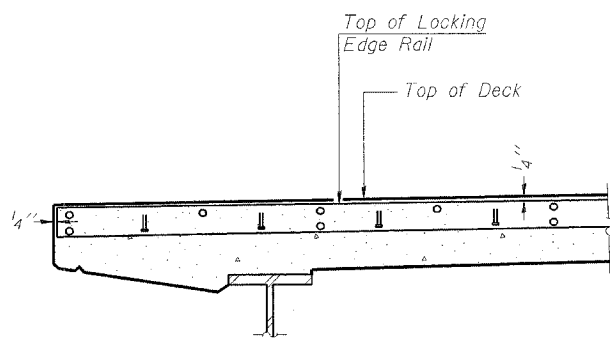
WELDED RAIL



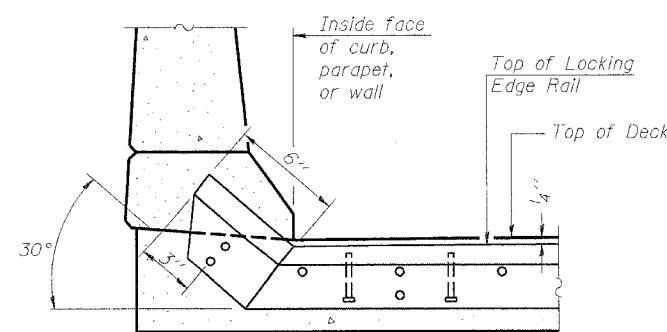
ANCHOR PLATE
(for welded rail)

Location	"A" at 50° F	Length	Rolled Rail Option		Welded Rail Option	
			No. of studs	No. of studs	No. of Anchor Plates	
W. Abut.	2"	38.3	194	118	76	
E. Abut.	2"	38.3	194	118	76	

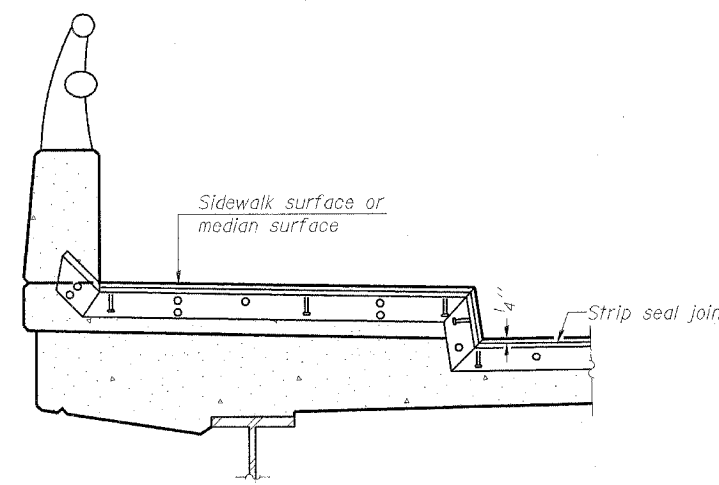
LOCKING EDGE RAILS



AT EDGE OF DECK WITH NO PARAPET



AT CURB, PARAPET, OR WALL



AT SIDEWALK OR MEDIAN*

TYPICAL END TREATMENTS

* Shorter plates with a single row of studs at 12" centers may be necessary on medians which are shallower than 9". See manufacturer's recommendation.

BILL OF MATERIAL

ITEM	UNIT	QUANTITY
Preformed Joint Strip Seal, 4"	Foot	76.6

ILLINOIS DEPARTMENT OF TRANSPORTATION
STRIP SEAL EXPANSION JOINT ASSEMBLY
OLD U.S. ROUTE 36 OVER
SANGAMON RIVER
F.A.U. ROUTE 7978
SECTION BR-1
SANGAMON COUNTY
STA. 70+00.00
STRUCTURE NUMBER 084-0052

DATE: JAN. 2005

DRAWN BY: NJV
CHECKED BY: PBB