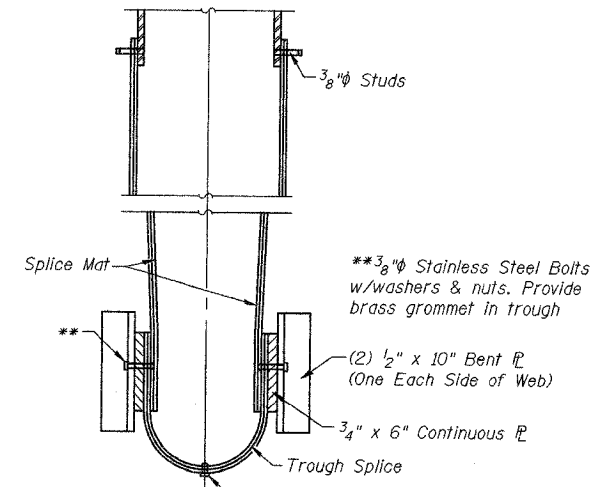
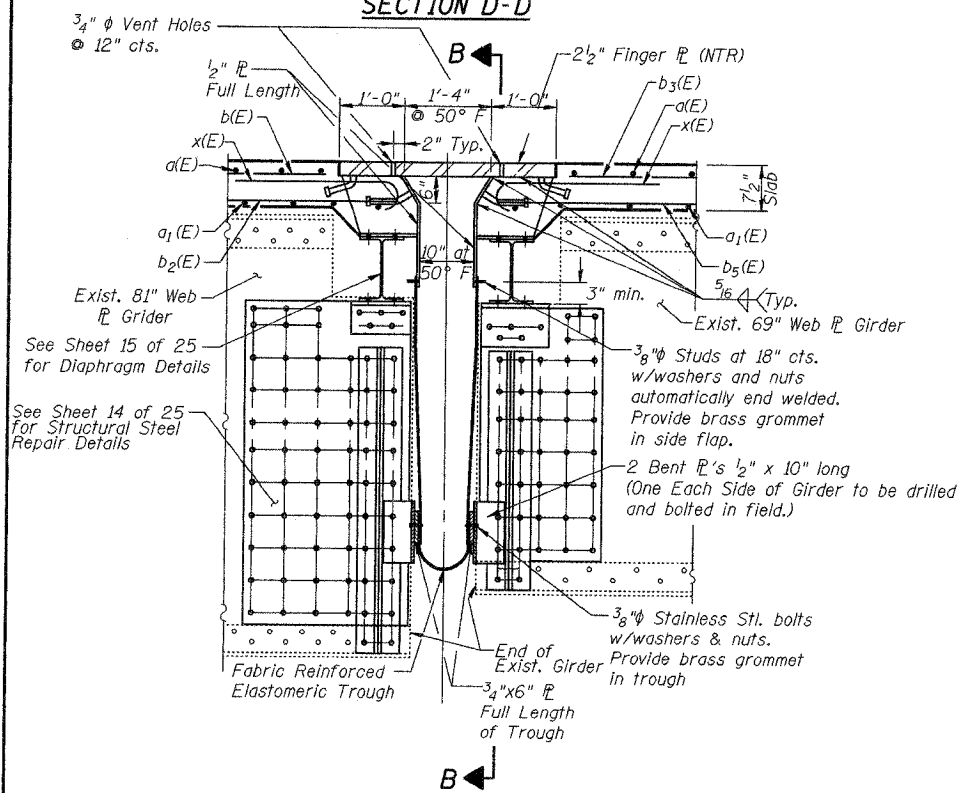


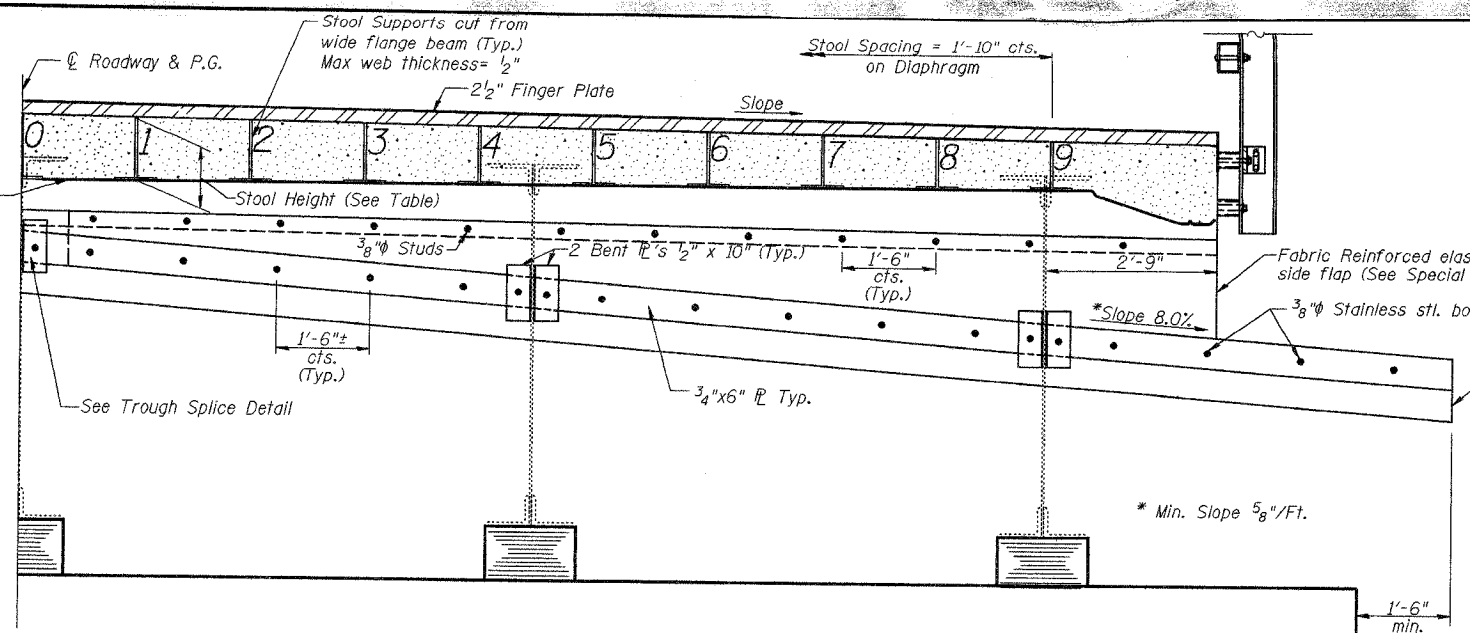
TROUGH SPLICE DETAIL



SECTION D-D



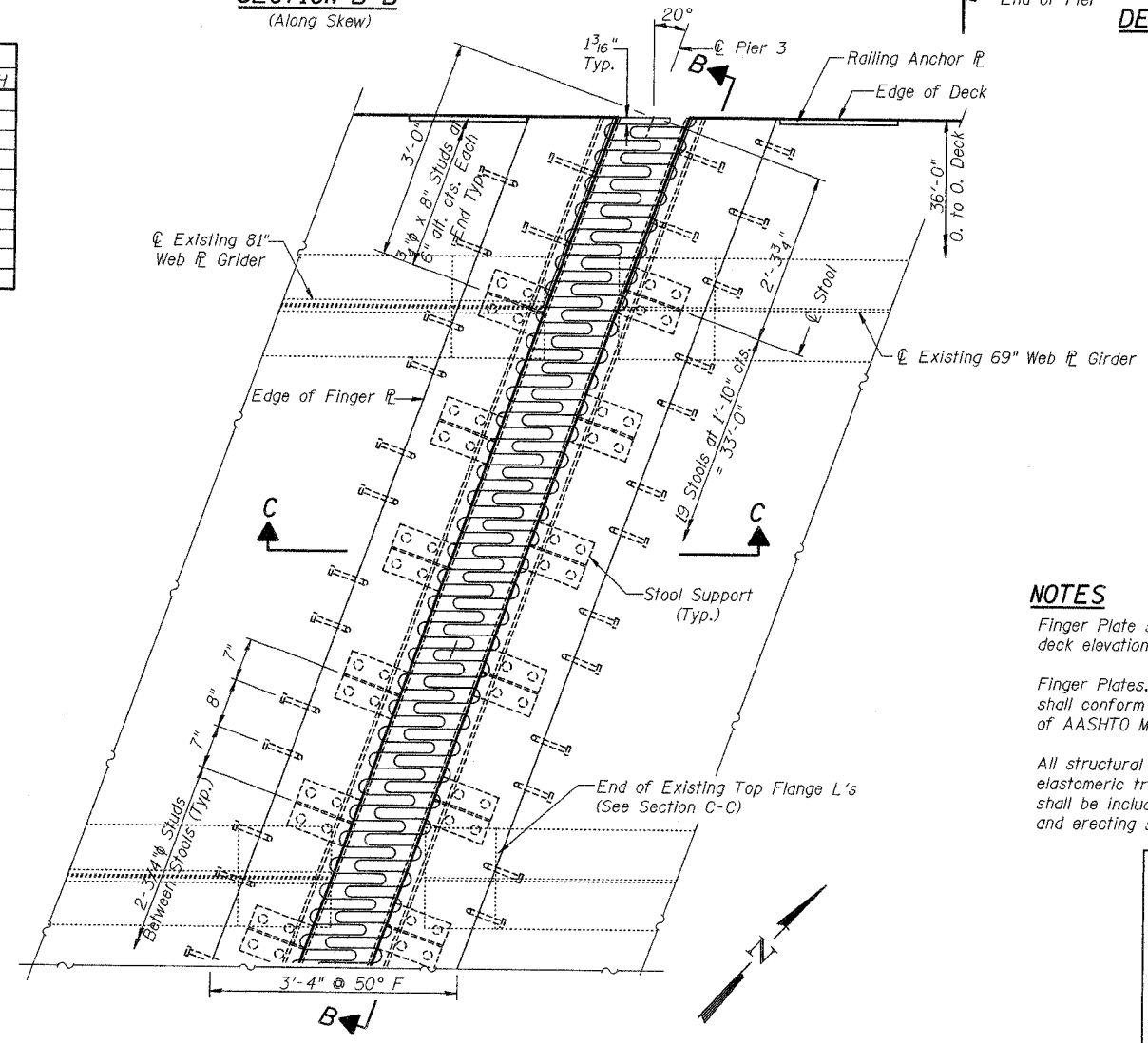
SECTION C-C
(Along \bar{C} Girder)



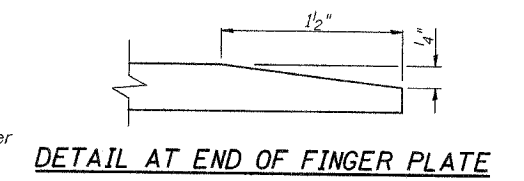
SECTION B-B
(Along Skew)

STOOL HEIGHTS (in.)

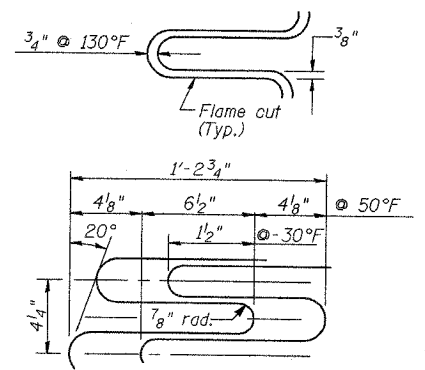
#	UNIT I		UNIT II	
	NORTH	SOUTH	NORTH	SOUTH
0	13 ⁵ / ₁₆	-	12 ⁵ / ₁₆	-
1	13	13	11 ⁵ / ₈	12
2	12 ⁵ / ₈	12 ¹ / ₈	11 ⁵ / ₈	11 ¹ / ₈
3	12 ⁵ / ₁₆	12 ³ / ₈	11 ¹ / ₄	11 ⁵ / ₈
4	11 ⁵ / ₁₆	12 ¹ / ₈	10 ⁵ / ₁₆	11 ¹ / ₈
5	11 ⁵ / ₈	11 ³ / ₄	10 ³ / ₈	10 ³ / ₄
6	11 ¹ / ₄	11 ¹ / ₂	10 ¹ / ₄	10 ¹ / ₈
7	10 ⁵ / ₁₆	11 ³ / ₁₆	9 ⁵ / ₁₆	10 ³ / ₁₆
8	10 ¹ / ₂	10 ³ / ₄	9 ¹ / ₁₆	9 ³ / ₄
9	10	10 ⁵ / ₁₆	9	9 ⁵ / ₁₆



PLAN AT PIER 3



DETAIL AT END OF FINGER PLATE



FINGER DETAILS

FINGER PLATE DESIGN DATA

Expansion Length = 537'-8"
Total Movement = 6'-3.4"
(for 50°F ± 80°F)

NOTES

- Finger Plate shall be fabricated to match deck elevations at Pier 3 along skew.
- Finger Plates, Stools and Trough Plates shall conform to the requirements of AASHTO M 270 Grade 50.
- All structural steel, fabric reinforced elastomeric trough, and accessories shall be included in the cost of furnishing and erecting structural steel.

ILLINOIS DEPARTMENT OF TRANSPORTATION

FINGER PLATE DETAILS

OLD U.S. ROUTE 36 OVER
SANGAMON RIVER
F.A.U. ROUTE 7978
SECTION BR-1
SANGAMON COUNTY
STA. 70+00.00
STRUCTURE NUMBER 084-0052

DATE: JAN. 2005
DRAWN BY: NJV
CHECKED BY: PBB