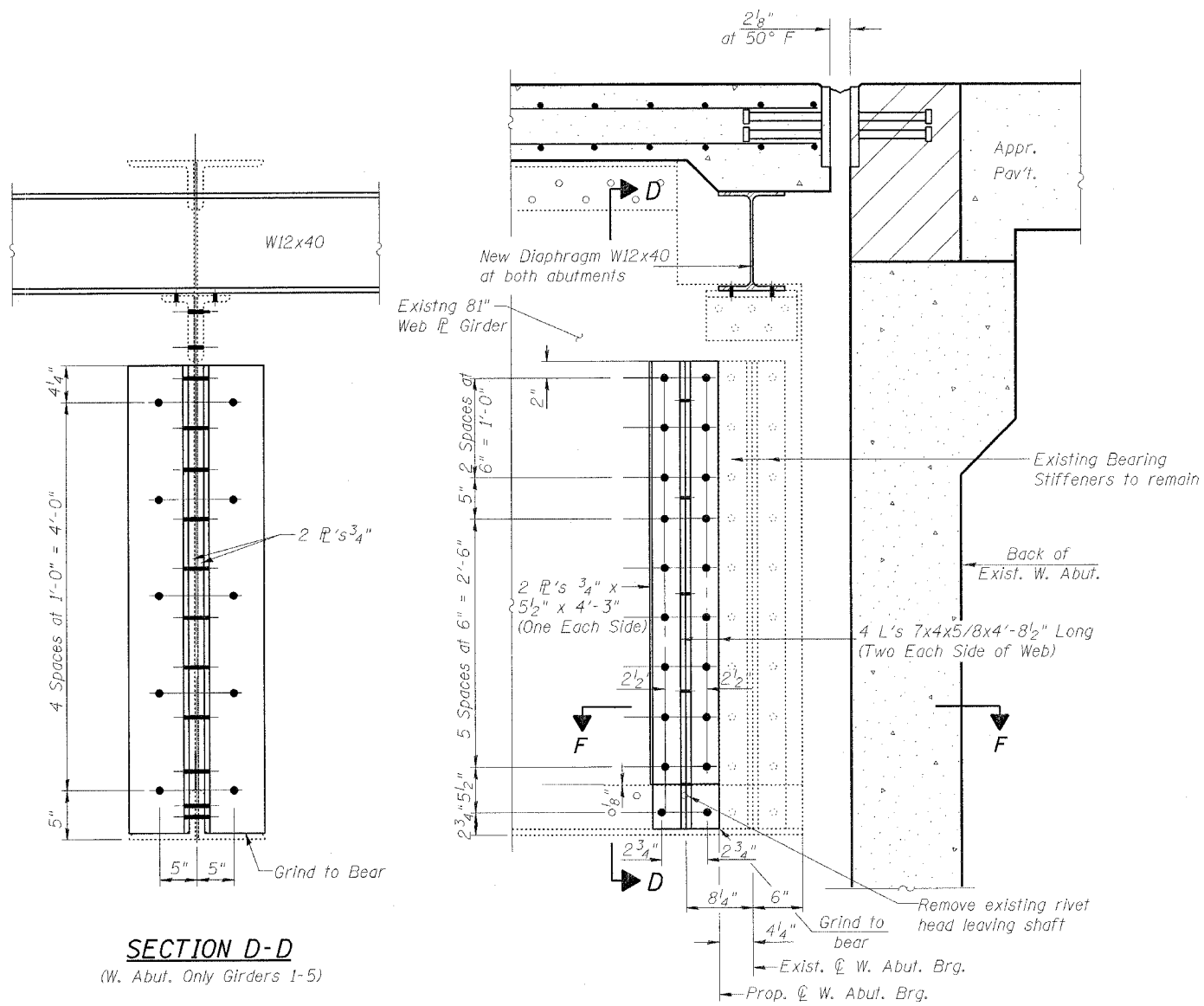


WEST ABUTMENT BEARING STIFFENERS

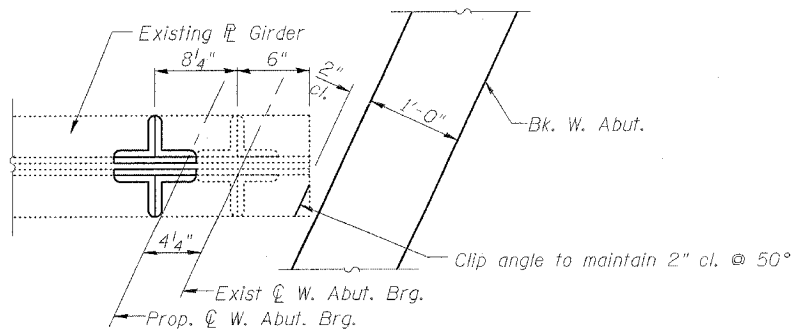


SECTION D-D

(W. Abut. Only Girders 1-5)

SECTION E-E

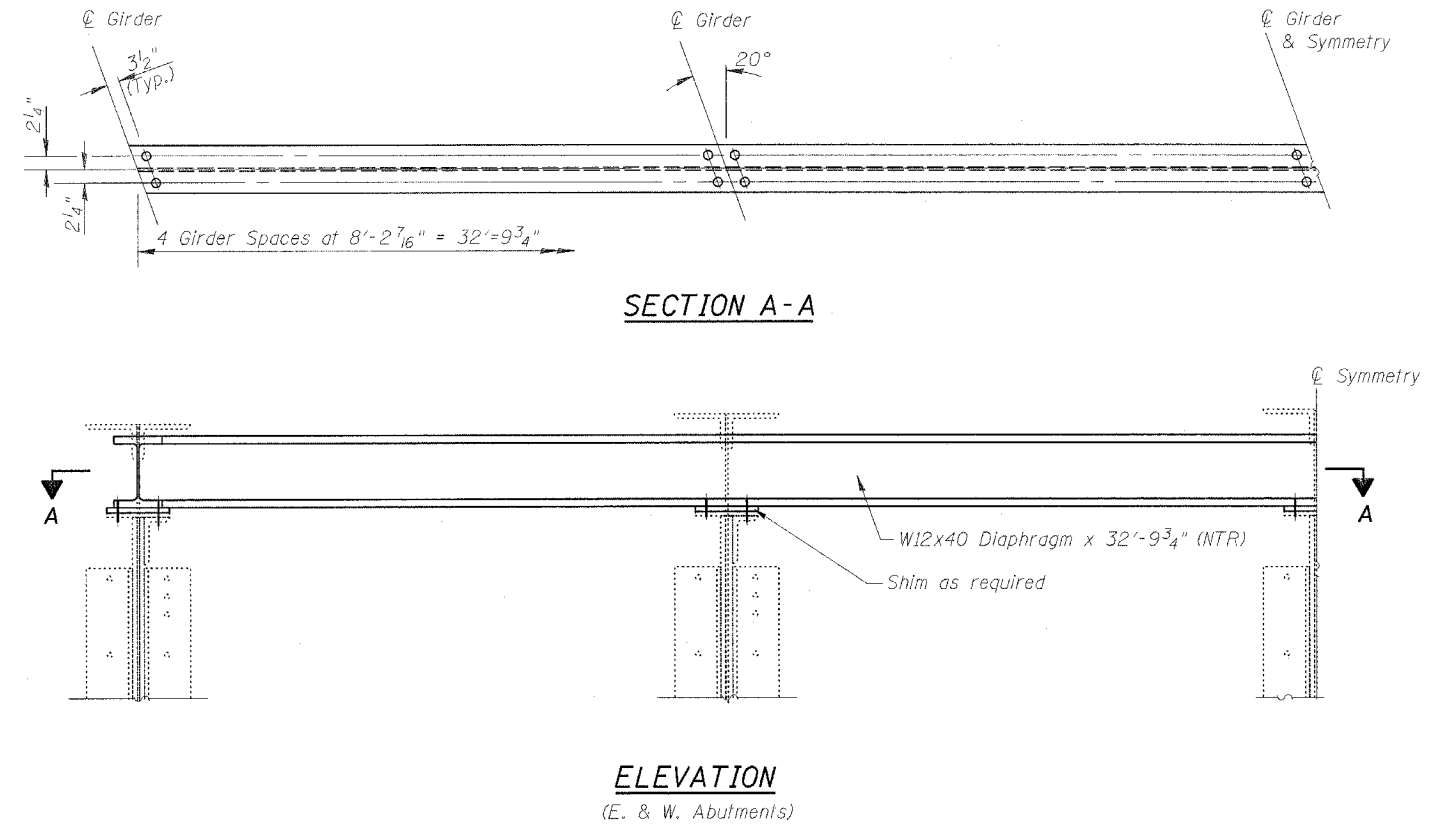
(Along Q Girder)
(W. Abut. Only Girders 1-5)



SECTION F-F

(W. Abut. Only)

EAST & WEST ABUTMENT DIAPHRAGM DETAILS



SECTION A-A

ELEVATION

(E. & W. Abutments)

NOTES:

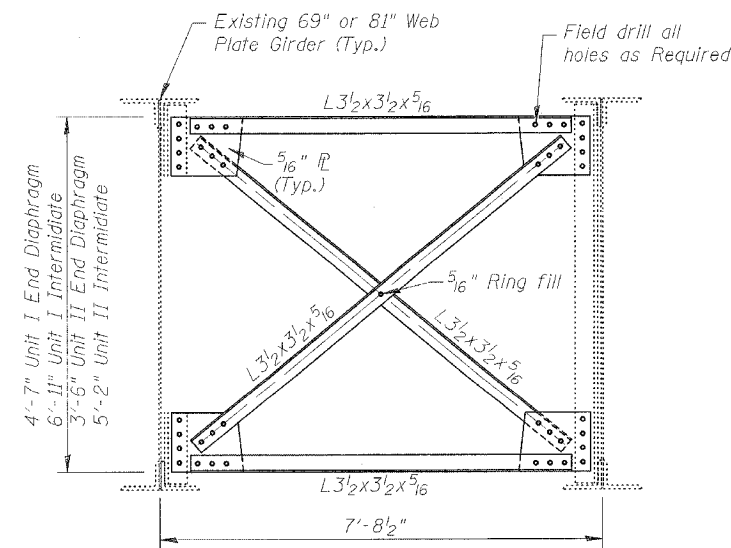
Fasteners shall be high strength bolts.

Holes in bottom flange of Diaphragm shall be 1"Ø. Fasteners shall be 7/8"Ø H.S. Bolts. Two hardened washers shall be required.

Existing bolts shall not be reused.

Contractor has option of field verifying girder locations or field drilling 1"Ø Holes in bottom flange after the diaphragm has been set.

Provide one 1/4" normal shim, one 1/8" shim and one 1/16" shim for height adjustment at each beam. Cost included with Furnishing and Erecting Structural Steel.



INTERMEDIATE DIAPHRAGM DETAILS

See Sheets 12 and 13 of 25 for member replacement locations

ILLINOIS DEPARTMENT OF TRANSPORTATION
WEST ABUTMENT BEARING STIFFENERS & DIAPHRAGM DETAILS
OLD U.S. ROUTE 36 OVER
SANGAMON RIVER
F.A.U. ROUTE 7978
SECTION BR-1
SANGAMON COUNTY
STA. 70+00.00
STRUCTURE NUMBER 084-0052

DATE: JAN. 2005

DRAWN BY: NJV
CHECKED BY: PBB