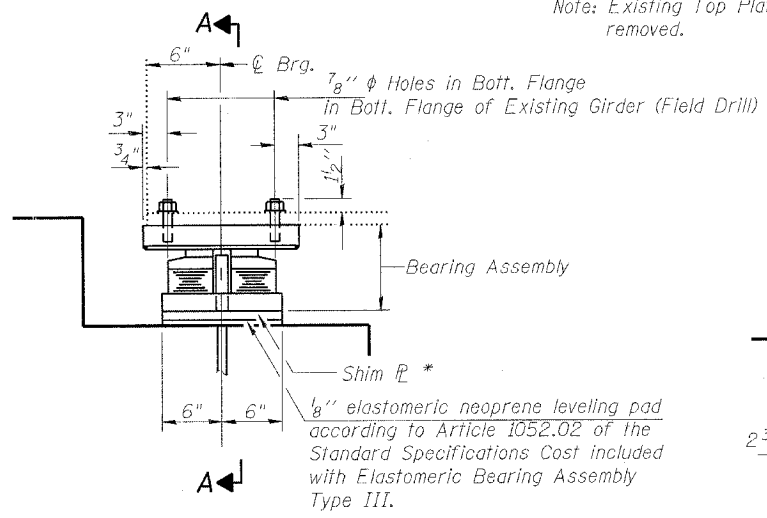
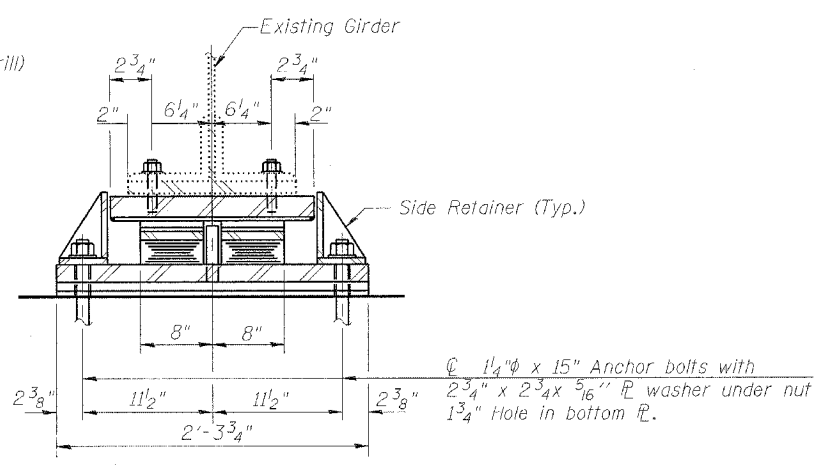


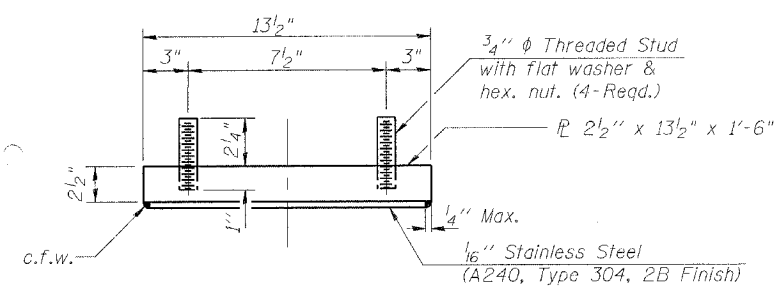
Note: Existing Top Plate to be removed.



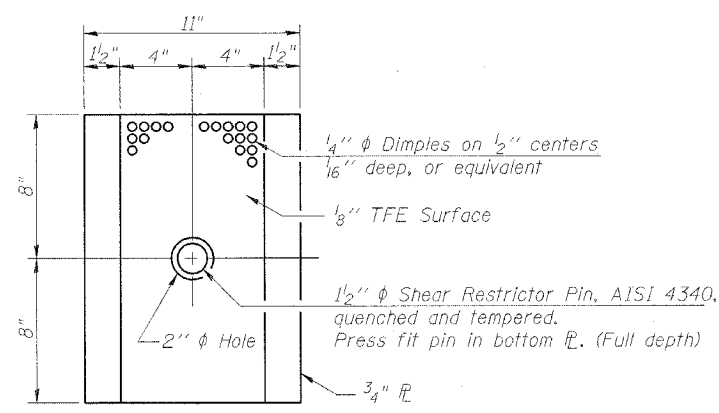
ELEVATION AT PIER 3
TYPE III ELASTOMERIC EXP. BRG.



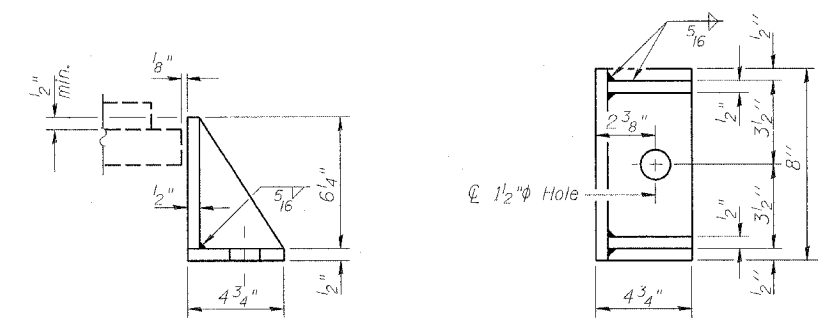
SECTION A-A



TOP BEARING ASSEMBLY



PLAN-TFE ELASTOMERIC BRG.



SIDE RETAINER

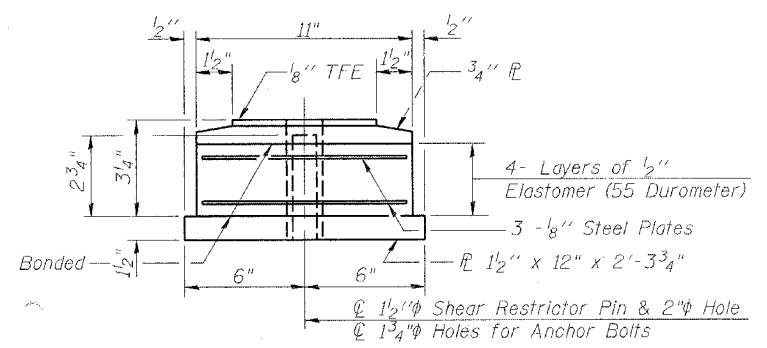
Equivalent rolled angle with stiffeners will be allowed in lieu of welded plates. Weight included with Structural Steel.

Shim Plate Thickness "t" (in.)					
Girder #	1	2	3	4	5
Pier 3 (Unit I)	-	-	5/8	1/2	-

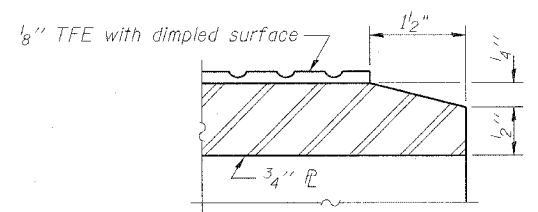
* In addition to shims listed on the table, provide one 1/4" shim, one 1/8" shim, and one 1/16" shim for height adjustment. Weight included with Structural Steel.

JACKING EXISTING SUPERSTRUCTURE

- All Unit I Girders at Pier 3 shall be lifted simultaneously 3/4" to replace existing bearings. Care shall be taken such that the relative elevation between adjacent girders does not vary by more than 1/4" from their original relative elevations.
- The maximum dead load reaction with deck removed on Span 3 is 22 kips per bearing.
- The minimum jack capacity shall be 17 tons.
- See Sheet 2 of 25 for Temporary Support Requirements.

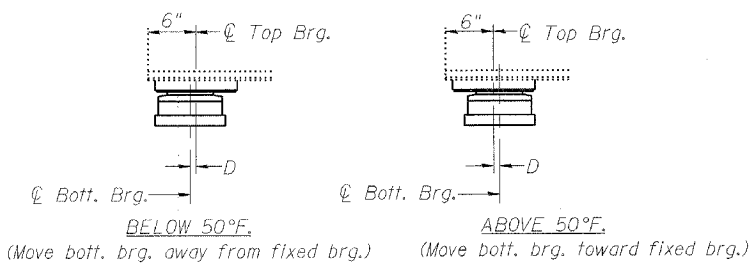


BOTTOM BEARING ASSEMBLY



SECTION THRU TFE

The 1/8" TFE sheet shall be bonded directly to the top steel plate with a two-component, medium viscosity epoxy resin, conforming to the requirements of the Federal Specification MMM-A-134, Type I. The bond agent shall be applied on the full area of the contact surfaces. Bonding of 1/8" TFE sheet during vulcanizing process will be permitted provided the process and method of adjusting assembly height is approved by the Engineer.



SETTING ANCHOR BOLTS AT PIER 3

D=1/8" per each 100' of expansion for every 15° temp. change from the normal temp. of 50°F.

NOTES:

- See sheet 24 of 25 for Anchor Bolt installation.
- Cost of Field Drilling Holes in Existing Beams included in cost of Furnishing and Erecting Structural Steel.
- For Existing Bearing Removal See Sheet 17 of 25.

BILL OF MATERIAL

ITEM	UNIT	QUANTITY
Elastomeric Bearing Assembly Type III	Each	5
Jack and Remove Existing Bearings	Each	5

ILLINOIS DEPARTMENT OF TRANSPORTATION
PIER 3 UNIT I BEARING DETAILS
OLD U.S. ROUTE 36 OVER
SANGAMON RIVER
F.A.U. ROUTE 7978
SECTION BR-1
SANGAMON COUNTY
STA. 70+00.00
STRUCTURE NUMBER 084-0052