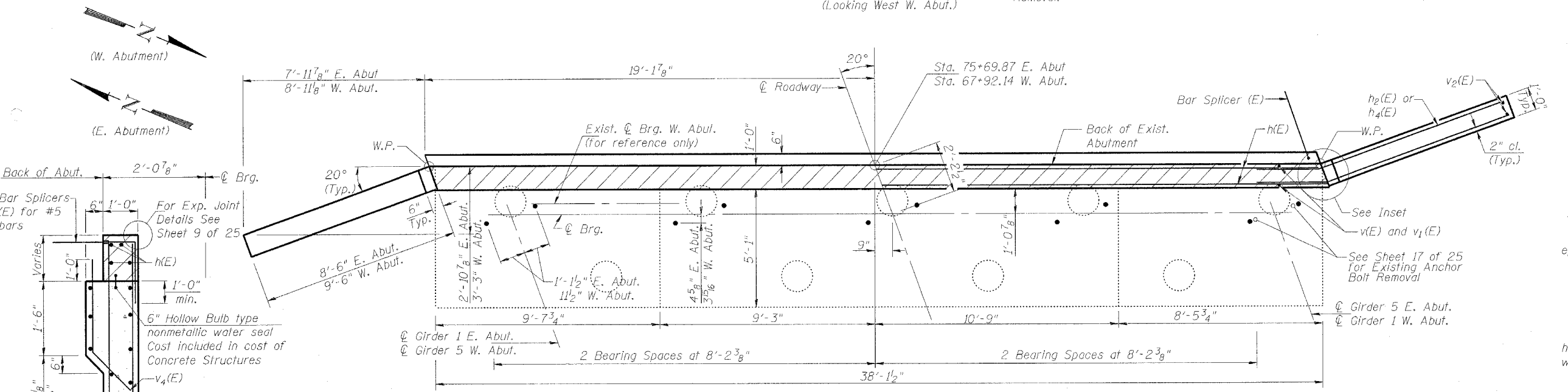


ELEVATION
(Looking East E. Abut.)
(Looking West W. Abut.)

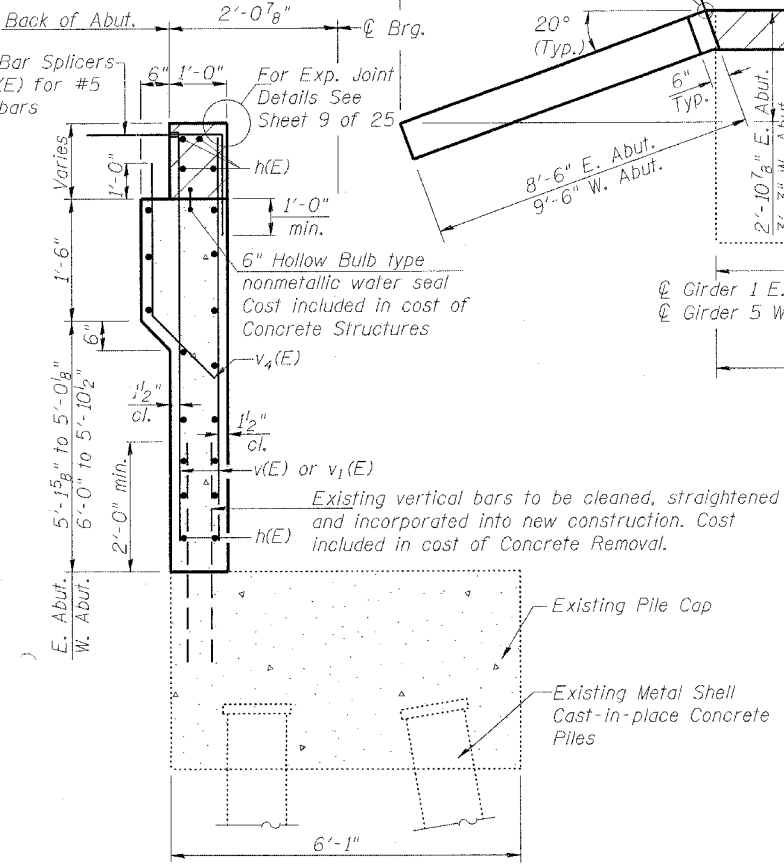
BILL OF MATERIAL
(BOTH ABUTMENTS)

BAR	NO.	SIZE	LENGTH	SHAPE
h(E)	40	#5	38'-0"	—
h ₁ (E)	20	#6	8'-2"	—
h ₂ (E)	20	#6	10'-6"	—
h ₃ (E)	20	#6	9'-2"	—
h ₄ (E)	20	#6	11'-6"	—
h ₅ (E)	48	#6	12'-6"	—
v(E)	78	#5	7'-8"	—
v ₁ (E)	78	#5	8'-6"	—
** v ₂ (E)	18	#5	18'-0"	—
** v ₃ (E)	20	#5	19'-2"	—
** v ₄ (E)	78	#5	4'-0"	—
*** Structure Excavation			Cu. Yd.	192.7
Concrete Structures			Cu. Yd.	35.2
Reinforcement Bars, Epoxy Coated			Pound	6050
Bar Splicers			Each	78

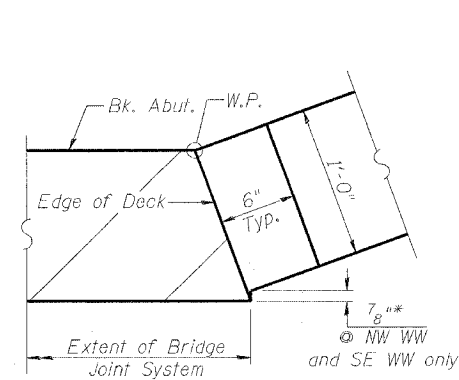
*** W. Abut. = 96.9 Cu Yd
E. Abut. = 95.8 Cu Yd



PLAN

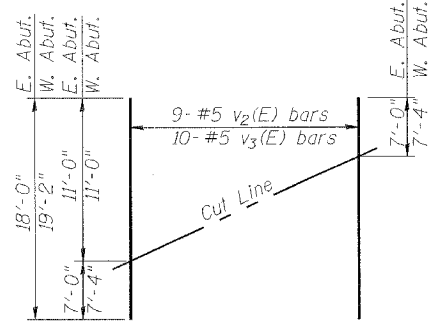


SECTION THRU ABUTMENT
Dim's at Rt. L's



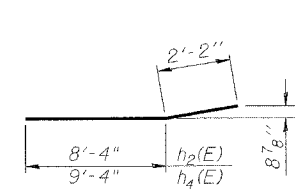
INSET

* Applies only to hatch block

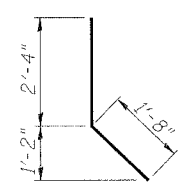


FIELD CUTTING DIAGRAM

** Order v₂(E) and v₃(E) full length. Cut as shown and use remainder of bars in opposite face.



BAR h₂(E) & h₄(E)



BAR v₄(E)

MIN BAR LAPS

#5 bars = 1'-8"
#6 bars = 2'-0"

NOTES:

- Reinforcement bars designated (E) shall be epoxy coated.
- For details of Bar Splicers, see Sheet 25 of 25.
- All edges have 3/4" chamfer except as noted.
- Hatched area to be poured after superstructure forms have been removed. Quantity of concrete included with Concrete Superstructure on Sheet 7 of 25.
- NW Wing indicates the North West Wingwall.
- All reinforcement and dimensions are symmetric about ϕ unless otherwise indicated.

ILLINOIS DEPARTMENT OF TRANSPORTATION

ABUTMENTS
OLD U.S. ROUTE 36 OVER
SANGAMON RIVER
F.A.U. ROUTE 7978
SECTION BR-1
SANGAMON COUNTY
STA. 70+00.00
STRUCTURE NUMBER 084-0052

DATE: JAN. 2005

DRAWN BY: NJV
CHECKED BY: PBB