

Bench Mark: Chiseled square at S.E. corner of existing structure. NAVD '88 = 588.22'.

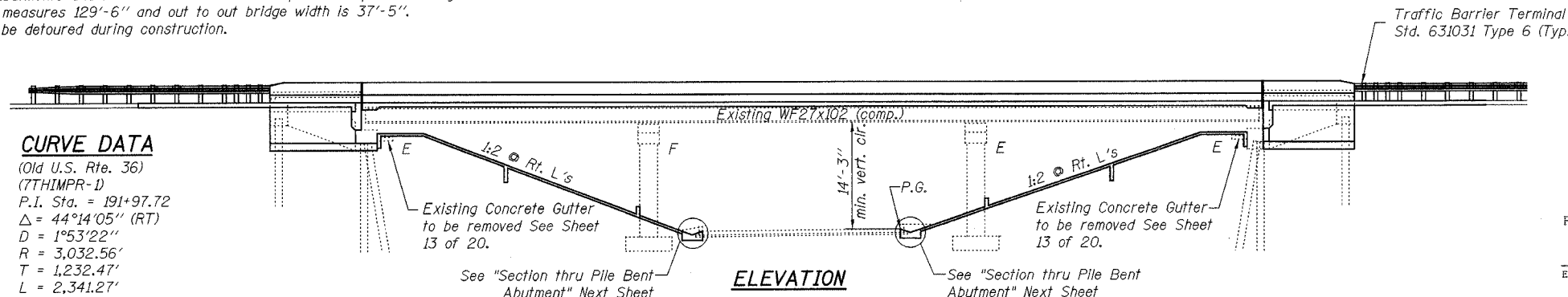
Existing Structure: S.N. 084-0053, originally built in 1958 as F.A. Route 49, Section 19X-2HB. The existing structure is a three span continuous, non-composite, rolled steel girder structure on pile bent abutments and three-column hammerhead piers on spread footings. The back to back of abutments measures 129'-6" and out to out bridge width is 37'-5". Traffic is to be detoured during construction.

No salvage.

ROUTE NO.	SECTION	COUNTY	TOTAL SHEETS	SHEET NO.	SHEET NO. 1 20 SHEETS
7978	BR-2	SANGAMON	261	151	
FED. ROAD DIST. NO.		ILLINOIS	FED. AID PROJECT		Contract #72449

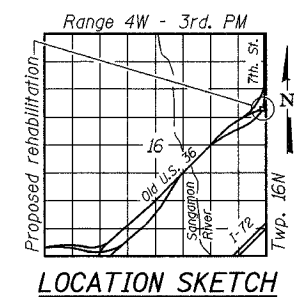
CURVE DATA

(Old U.S. Rte. 36)
(7TH IMPR-D)
P.I. Sta. = 191+97.72
 $\Delta = 44^\circ 14' 05''$ (RT)
 $D = 1^\circ 53' 22''$
 $R = 3,032.56'$
 $T = 1,232.47'$
 $L = 2,341.27'$
 $E = 240.88'$
 $e = .028$
P.C. Sta. = 179+65.25
P.T. Sta. = 203+06.52



ELEVATION

APPROVED
FOR STRUCTURAL ADEQUACY ONLY
Ralph E. Anderson
ENGINEER OF BRIDGES AND STRUCTURES

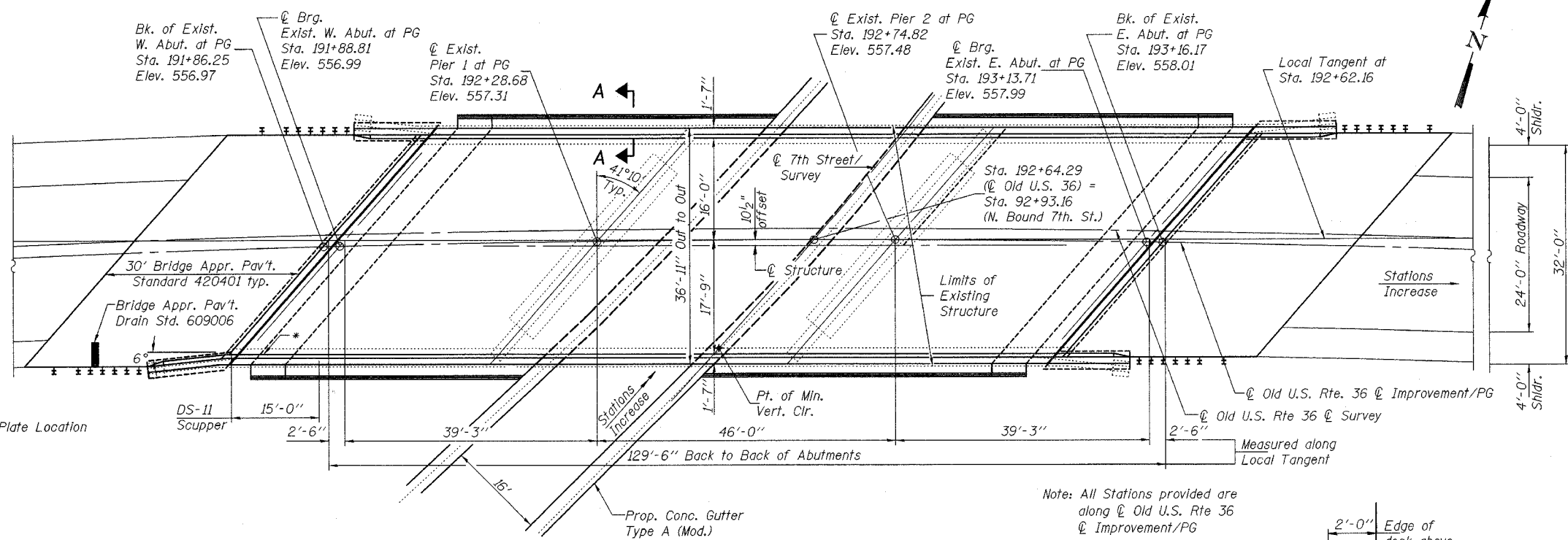


LOCATION SKETCH

STATION 192+62.16
REBUILT 20... BY
STATE OF ILLINOIS
F.A.U. RTE. 7978 SECTION BR-2
LOADING HS20
STR. NO. 084-0053

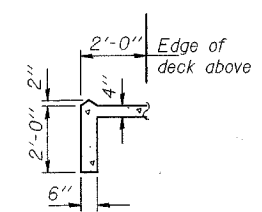
NAME PLATE
See Std. 515001

- INDEX OF SHEETS**
- 1 General Plan
 - 2 General Notes & Total Bill of Material
 - 3-4 Top of Slab Elevations
 - 5 Superstructure
 - 6 Superstructure Details
 - 7 Intentionally Blank
 - 8 Strip Seal Expansion Joint Assembly
 - 9 Intentionally Blank
 - 10 Framing Plan
 - 11 W. Abutment Bearing Details
 - 12 E. Abutment Bearing Details
 - 13 Abutment Concrete Removal
 - 14 Concrete Repair Details
 - 15 West Abutment
 - 16 East Abutment
 - 17 Abutment Details
 - 18 Anchor Bolt Details
 - 19 Bar Splicer Assembly Details
 - 20 Cantilever Framing Brackets



PLAN

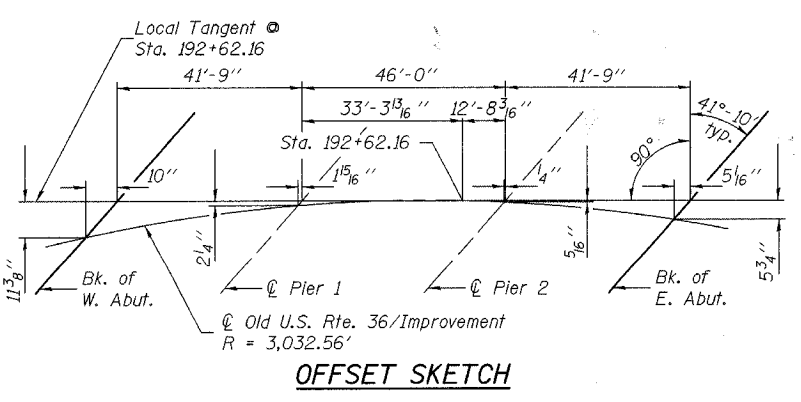
Note: All Stations provided are along C/L Old U.S. Rte 36 C/L Improvement/PG



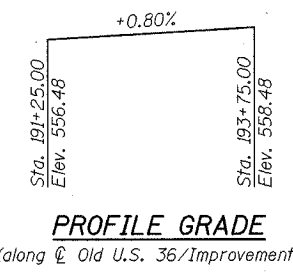
SECTION A-A



Sheila Kiplinger 9/8/05
Sheila J. Kiplinger, S.E. Date
Structural Engineer License No. 081-005283
Expiration Date: 11/30/2006

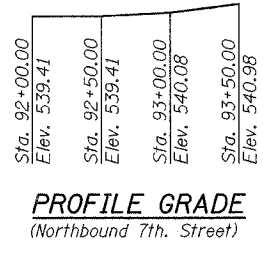


OFFSET SKETCH



PROFILE GRADE

(along C/L Old U.S. 36/Improvement)



PROFILE GRADE

(Northbound 7th. Street)

DESIGN SPECIFICATIONS
2002 AASHTO

SEISMIC DATA
Seismic Performance Category (SPC) = A
Bedrock Acceleration Coefficient (A) = 0.048g
Site Coefficient (S) = 1.2

LOADING HS20-44
Allow 50# / sq. ft. for future wearing surface.

DESIGN STRESSES

FIELD UNITS
New Construction
 $f'_c = 3,500$ psi
 $f_y = 60,000$ psi (Reinforcement)
 $f_y = 36,000$ psi (Str. Steel-M270 Gr. 36)

Existing Construction
 $f'_c = 3,500$ psi
 $f_y = 40,000$ psi (Reinforcement)
 $f_y = 33,000$ psi (Structural Steel)

ILLINOIS DEPARTMENT OF TRANSPORTATION
GENERAL PLAN
OLD U.S. ROUTE 36 OVER N.B. 7TH STREET RAMP
F.A.U. ROUTE 7978
SECTION BR-2
SANGAMON COUNTY
STA. 192+62.16
STRUCTURE NUMBER 084-0053
DRAWN BY: NJV
CHECKED BY: PBB
DATE: JAN. 2005