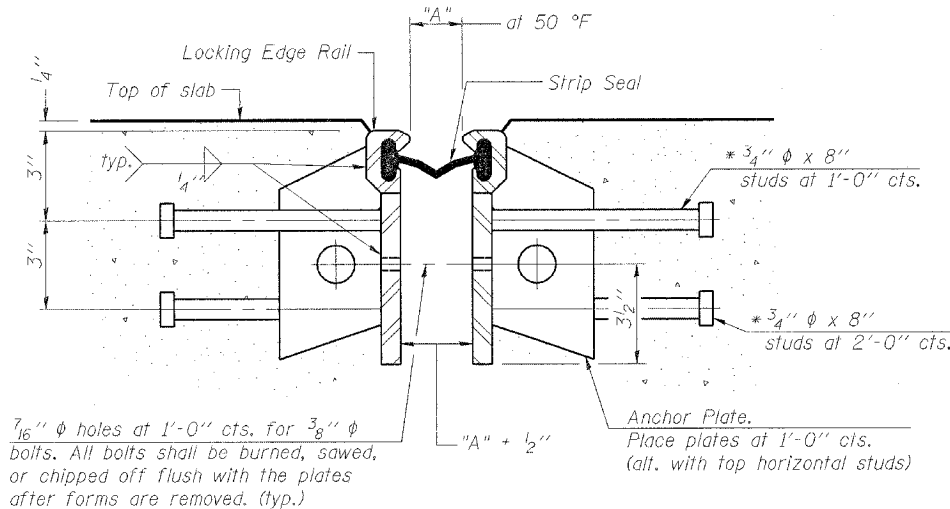


SECTION THRU ROLLED RAIL EXP. JOINT

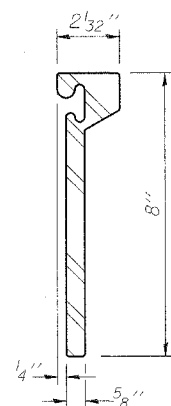


SECTION THRU WELDED RAIL EXP. JOINT

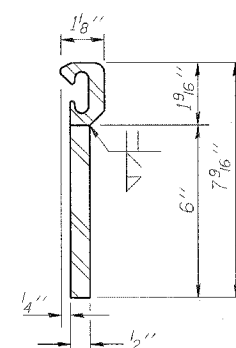
NOTES:

The strip seal shall be made continuous and shall have a minimum thickness of 1/4". The configuration of the strip seal shall match the configuration of the Locking Edge Rails.
 The height and thickness of the Locking Edge Rails shown are minimum dimensions. The actual configuration of the Locking Edge Rails and matching strip seal may vary from manufacturer to manufacturer. Flanged edge rails will not be allowed.
 Locking Edge Rails may be spliced at slope discontinuities and stage construction joints.
 The manufacturer's recommended installation methods shall be followed.
 The strip seal joint shall have a rated movement equal to 4".

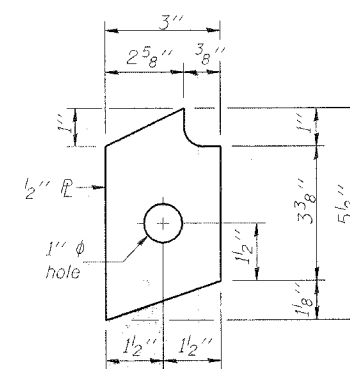
* Granular or solid Flux filled headed studs conforming to Article 1006.32 of the Std. Specs., automatically end welded.



ROLLED (EXTRUDED) RAIL



WELDED RAIL

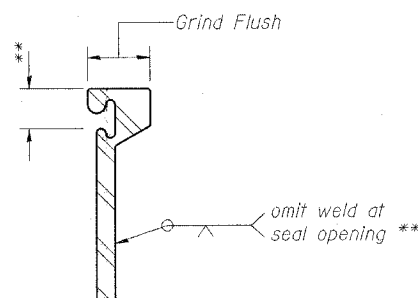


ANCHOR PLATE

(for welded rail)

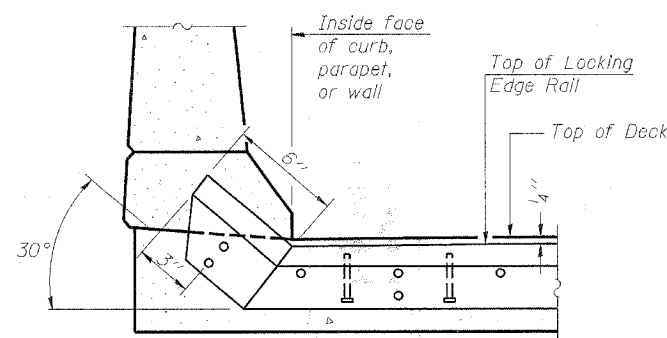
Location	"A" at 50° F	Length	Rolled Rail Option		Welded Rail Option	
			No. of studs	No. of Anchor Plates	No. of studs	No. of Anchor Plates
W. Abut.	1 3/4"	45.8	236	146	92	92
E. Abut.	2"	45.8	236	146	146	92

LOCKING EDGE RAILS

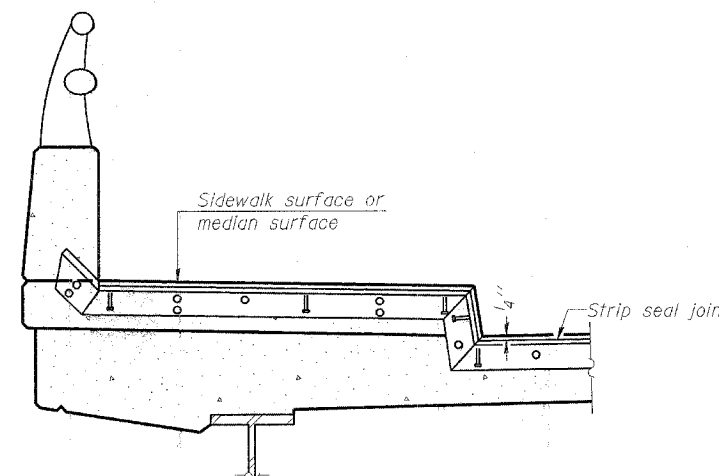


LOCKING EDGE RAIL SPLICE

The inside of the locking edge rail groove shall be free of weld residue.



AT CURB, PARAPET, OR WALL



AT SIDEWALK OR MEDIAN*

* Shorter plates with a single row of studs at 12" centers may be necessary on medians which are shallower than 9". See manufacturer's recommendation.

BILL OF MATERIAL

ITEM	UNIT	QUANTITY
Preformed Joint Strip Seal, 4"	Foot	91.6

ILLINOIS DEPARTMENT OF TRANSPORTATION
STRIP SEAL EXPANSION JOINT ASSEMBLY
 OLD U.S. ROUTE 36 OVER N.B. 7TH STREET RAMP
 F.A.U. ROUTE 7978
 SECTION BR-2
 SANGAMON COUNTY
 STA. 192+62.16
 STRUCTURE NUMBER 084-0053

DATE: JAN. 2005

DRAWN BY: NJV
 CHECKED BY: PBB