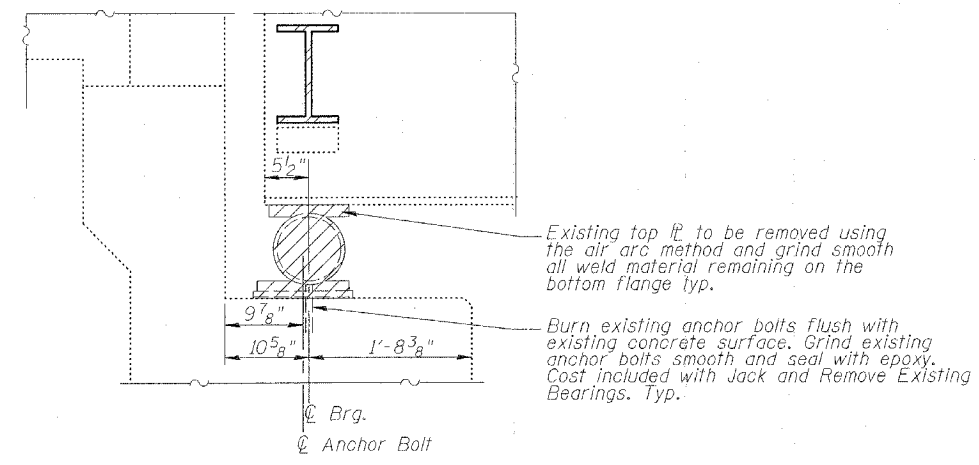


ELEVATION AT ABUT.

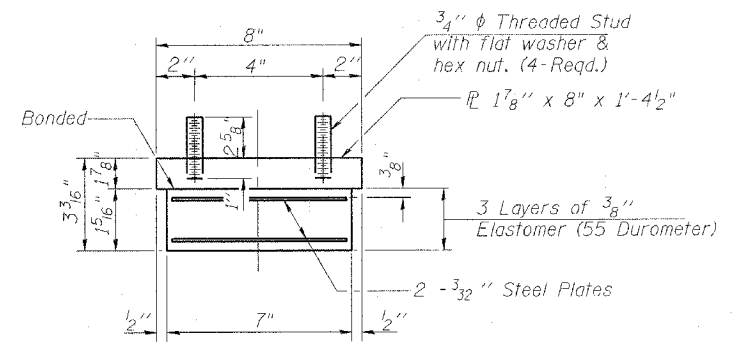
SECTION A-A

TYPE I ELASTOMERIC EXP. BRG.

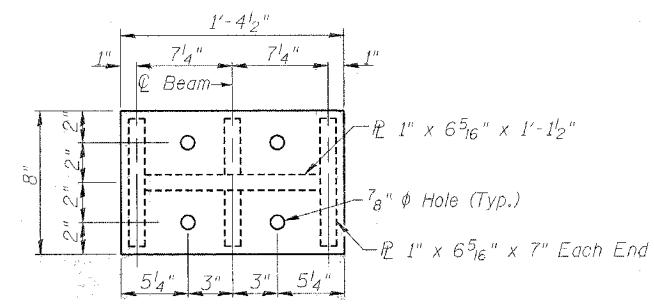


EXISTING BEARING REMOVAL

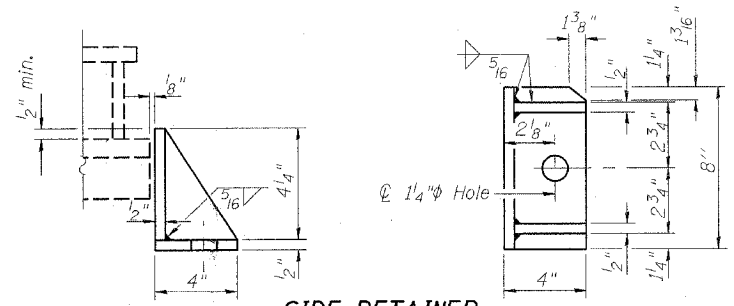
Hatched areas indicate removal of existing bearing.



BEARING ASSEMBLY

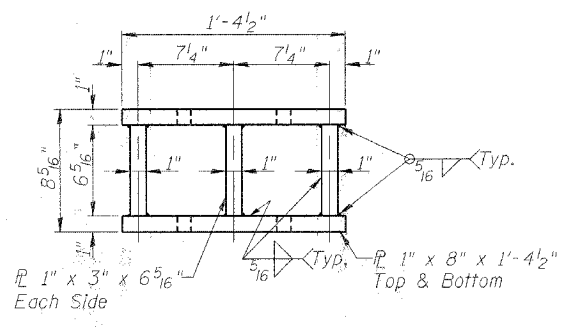


PLAN TOP AND BOTTOM PLATE



SIDE RETAINER

Equivalent rolled angle with stiffeners will be allowed in lieu of welded plates. Weight included with Structural Steel.



STEEL EXTENSION DETAIL

Weight included with Structural Steel.

JACKING EXISTING SUPERSTRUCTURE

1. The Contractor shall submit for approval by the Engineer, plans for jacking existing superstructure prior to commencing any work at the bearings. This submittal shall be sealed by a licensed structural engineer in Illinois.
2. Jacking and removing existing bearings shall be done after existing deck removal is completed and before the new deck is poured.
3. All Beams at the abutments shall be lifted simultaneously 1/4" to replace existing bearings. Care shall be taken such that the relative elevation between adjacent beams does not vary by more than 1/8" from their original relative elevations.
4. The maximum dead load reaction with deck removed (per bearing) at the Abutments is 1840 lbs.
5. The minimum jack capacity shall be 2 tons.
6. The new structural steel and bearings shall be in place and the jacks shall be lowered before the new concrete deck is poured.

Shim Plate Thickness "t" (in.)						
Beam #	6	5	4	3	2	1
W. Abut.	3/8	5/8	5/8	1/2	1/2	-

* In addition to shims listed on the table above, provide one 1/4" shim, one 1/8" shim, and one 1/16" shim for height adjustment. Weight included with Structural Steel.

BILL OF MATERIAL

ITEM	UNIT	QUANTITY
Elastomeric Bearing Assembly Type I	Each	6
Jack and Remove Existing Bearings	Each	6

NOTES:

- See Sheet 18 of 20 for Anchor Bolt installation.
- Shim plates shall not be placed under Bearing Assembly.
- Cost of Field Drilling holes in existing beams included in cost of Furnishing and Erecting Structural Steel.

ILLINOIS DEPARTMENT OF TRANSPORTATION
W. ABUTMENT BEARING DETAILS
 OLD U.S. ROUTE 36 OVER
 N.B. 7TH STREET RAMP
 F.A.U. ROUTE 7978
 SECTION BR-2
 SANGAMON COUNTY
 STA. 192+62.16
 STRUCTURE NUMBER 084-0053
 DRAWN BY: NJV
 CHECKED BY: PBB
 DATE: JAN. 2005