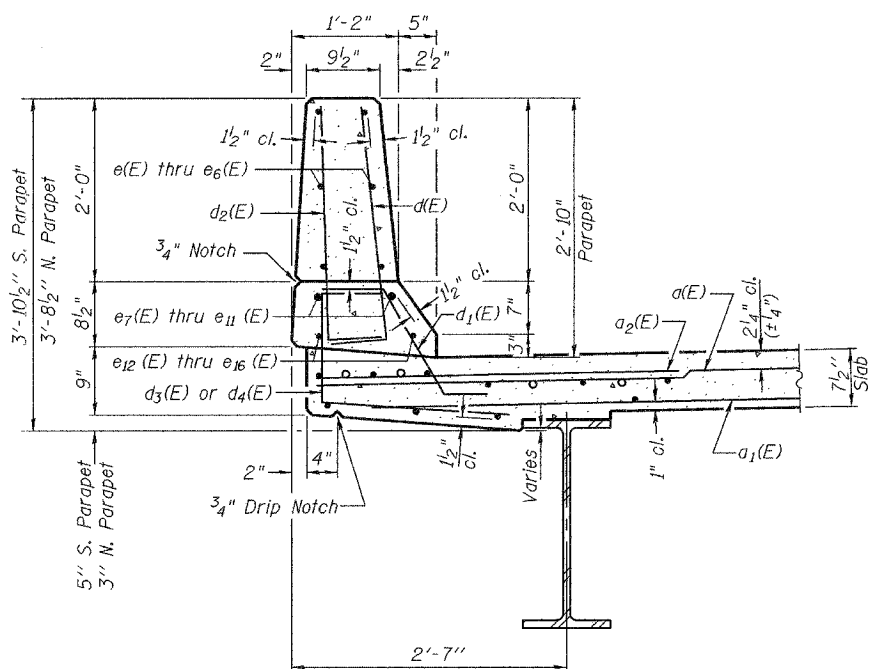


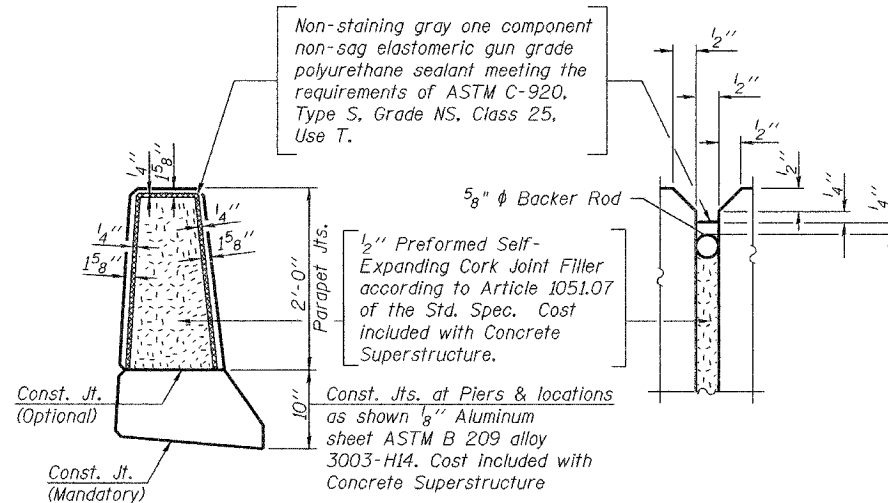
STATE OF ILLINOIS
DEPARTMENT OF TRANSPORTATION

ROUTE NO.	SECTION	COUNTY	TOTAL SHEETS	SHEET	SHEET NO. 9
FAU 7968	#	SANGAMON	241	179	33 SHEETS
FED. ROAD DIST. NO. 7	ILLINOIS	FED. AID PROJECT-			

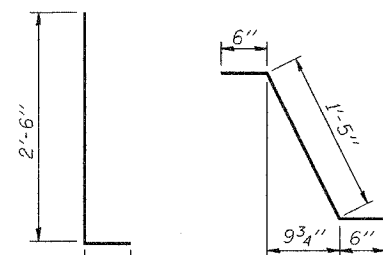
Contract #72449 *SECTION 3R(BR, BR-1, BR-2)19RS-8



SECTION THRU PARAPET

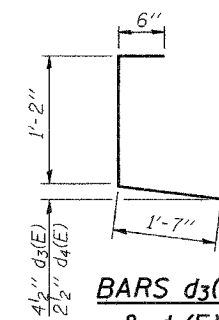


PARAPET JOINT DETAILS

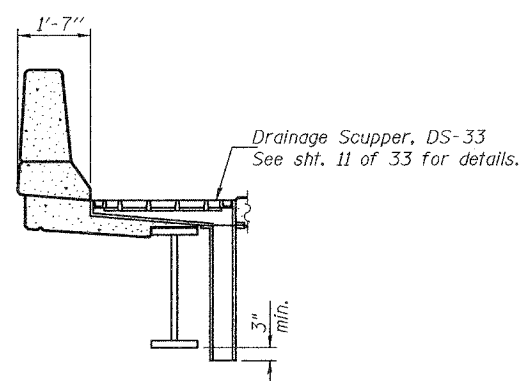


BARS d1(E)
& d2(E)

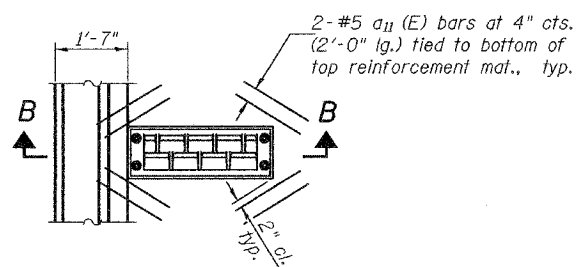
BAR d1(E)



BARS d3(E)
& d4(E)



SECTION B-B

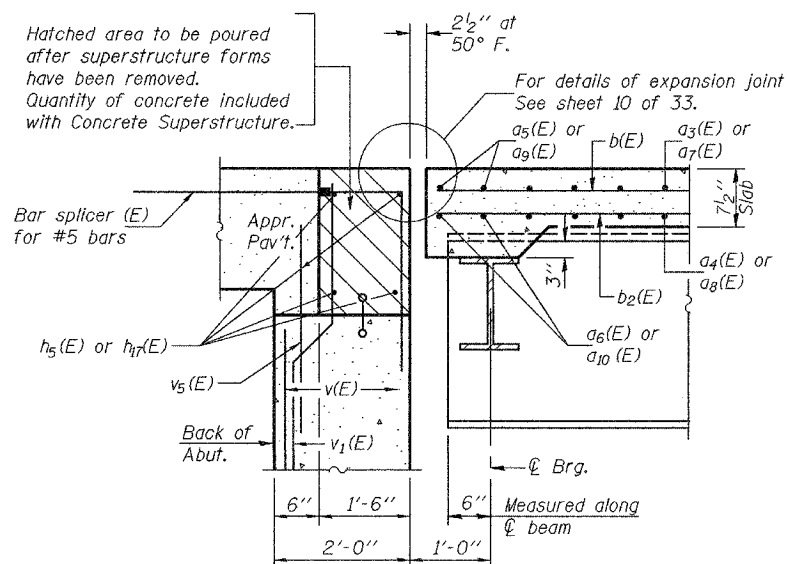


PLAN

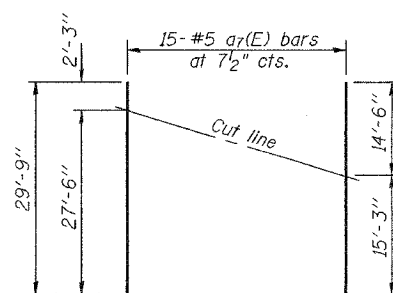
Notes: Cut longitudinal reinforcement to miss drainage scupper. For location of drainage scupper, see sheet 1 of 33.

DESIGNED	J. Mann
CHECKED	G. Ahanchi
DRAWN	BECKY M. LEACH
CHECKED	JWM/GRA

December 1, 2005
EXAMINED *Thomas J. Domagalaki*
PASSED *Ralph E. Anderson*

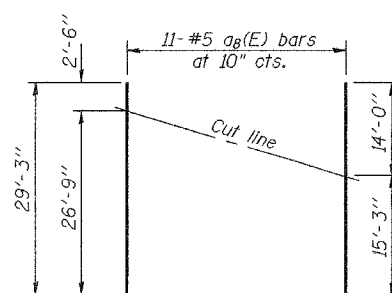


SECTION A-A



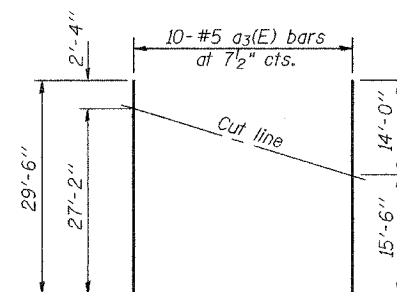
FIELD CUTTING DIAGRAM

Order a7(E) full length. Cut as shown and use remainder of bars in same end of deck.



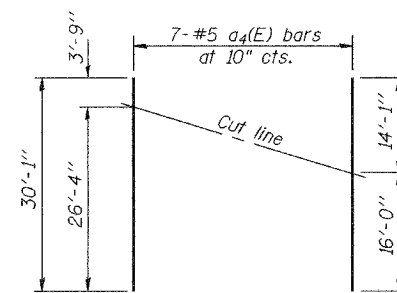
FIELD CUTTING DIAGRAM

Order a9(E) full length. Cut as shown and use remainder of bars in same end of deck.



FIELD CUTTING DIAGRAM

Order a3(E) full length. Cut as shown and use remainder of bars in same end of deck.



FIELD CUTTING DIAGRAM

Order a4(E) full length. Cut as shown and use remainder of bars in same end of deck.

SUPERSTRUCTURE
BILL OF MATERIAL

Bar	No.	Size	Length	Shape
a(E)	342	#5	28'-6"	—
a1(E)	257	#5	27'-9"	—
a2(E)	371	#6	4'-6"	—
a3(E)	10	#5	29'-6"	—
a4(E)	7	#5	30'-1"	—
a5(E)	2	#5	31'-6"	—
a6(E)	2	#5	30'-8"	—
a7(E)	15	#5	29'-9"	—
a8(E)	11	#5	29'-3"	—
a9(E)	2	#5	35'-3"	—
a10(E)	2	#5	34'-3"	—
a11(E)	8	#5	2'-0"	—
b(E)	256	#5	30'-0"	—
b1(E)	174	#6	17'-7"	—
b2(E)	234	#5	27'-0"	—
d(E)	499	#5	3'-0"	—
d1(E)	499	#5	2'-5"	—
d2(E)	499	#4	3'-0"	—
d3(E)	248	#4	3'-3"	—
d4(E)	251	#4	3'-3"	—
e(E)	48	#4	11'-9"	—
e1(E)	18	#4	16'-6"	—
e2(E)	24	#4	17'-11"	—
e3(E)	18	#4	18'-11"	—
e4(E)	18	#4	16'-11"	—
e5(E)	24	#4	17'-9"	—
e6(E)	18	#4	18'-0"	—
e7(E)	16	#8	11'-9"	—
e8(E)	16	#8	26'-9"	—
e9(E)	4	#8	30'-5"	—
e10(E)	4	#8	27'-5"	—
e11(E)	4	#8	29'-0"	—
e12(E)	16	#5	11'-9"	—
e13(E)	16	#5	25'-10"	—
e14(E)	4	#5	29'-6"	—
e15(E)	4	#5	26'-6"	—
e16(E)	4	#5	28'-1"	—
Reinforcement Bars, Epoxy Coated	Pound	51,170		
Concrete Superstructure	Cu. Yds.	226.2		

Reinforcement bars designated (E) shall be epoxy coated.

SUPERSTRUCTURE DETAILS

F.A.U. ROUTE 7968
SECTION 3R(BR, BR-1, BR-2)19RS-8
SANGAMON COUNTY
STATION 17+97.34
STRUCTURE NO. 084-0518