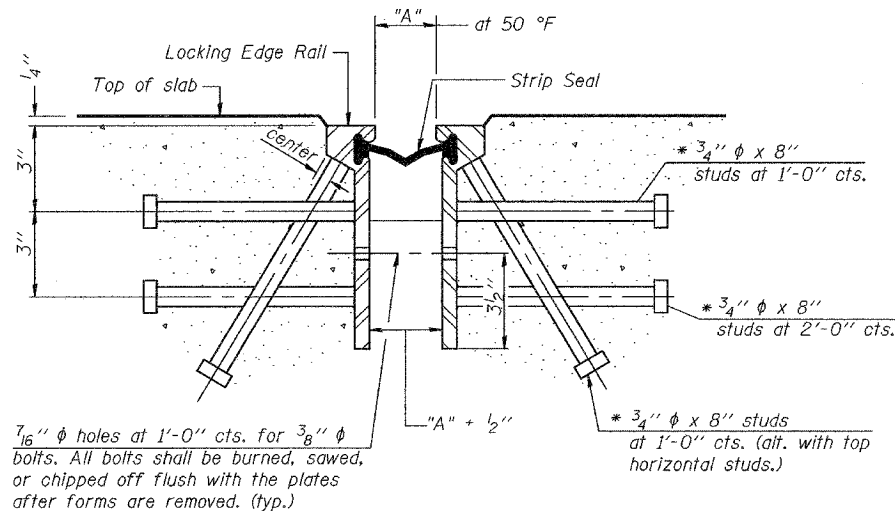


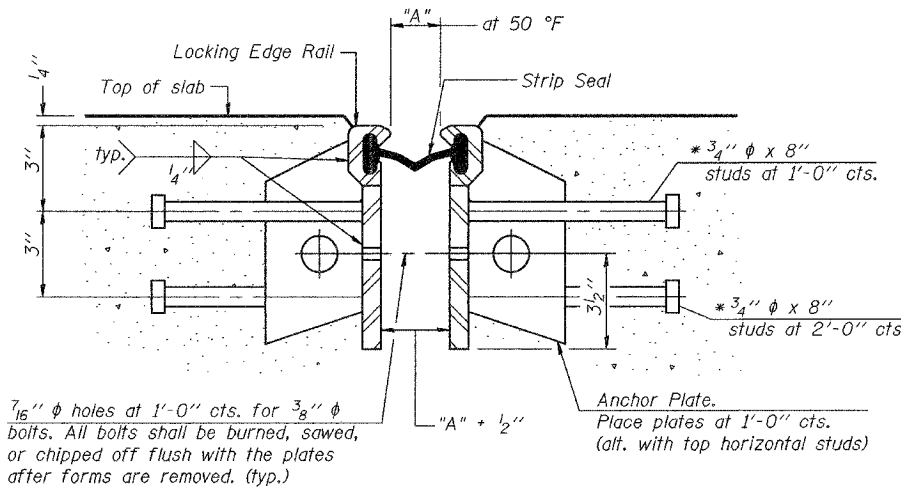
STATE OF ILLINOIS
DEPARTMENT OF TRANSPORTATION

ROUTE NO.	SECTION	COUNTY	TOTAL SHEETS	SHEET NO.	SHEET NO. 10 33 SHEETS
FAU 7968	*	SANGAMON	261	180	
FED. ROAD DIST. NO. 7	ILLINOIS	FED. AID PROJECT-			

Contract #72449 *SECTION 3R(BR, BR-1, BR-2)19RS-8



SECTION THRU ROLLED RAIL EXP. JOINT

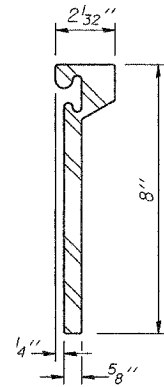


SECTION THRU WELDED RAIL EXP. JOINT

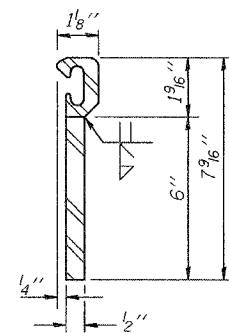
GENERAL NOTES

The strip seal shall be made continuous and shall have a minimum thickness of 1/4". The configuration of the strip seal shall match the configuration of the Locking Edge Rails.
The height and thickness of the Locking Edge Rails shown are minimum dimensions. The actual configuration of the Locking Edge Rails and matching strip seal may vary from manufacturer to manufacturer. Flanged edge rails will not be allowed.
Locking Edge Rails may be spliced at slope discontinuities and stage construction joints.
The manufacturer's recommended installation methods shall be followed.
The strip seal joint shall have a rated movement equal to 4".

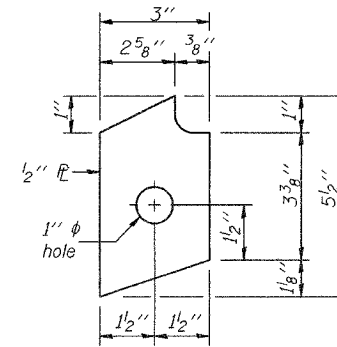
* Granular or solid flux filled headed studs conforming to Article 1006.32 of the Std. Specs., automatically end welded.



ROLLED (EXTRUDED) RAIL



WELDED RAIL

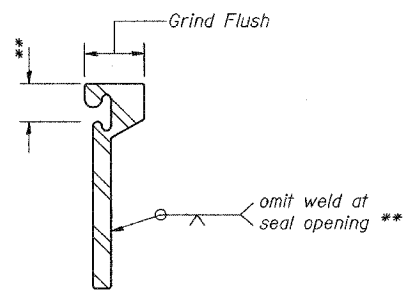


ANCHOR PLATE

(for welded rail)

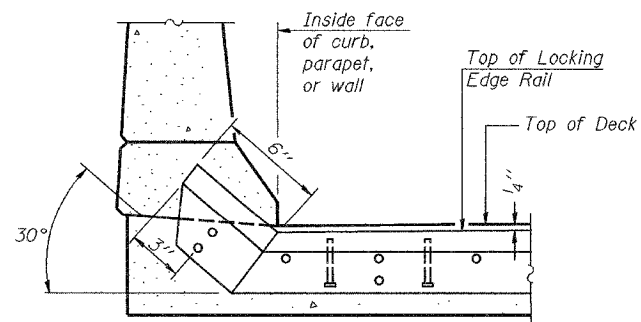
Location	"A" at 50°F	Length	Rolled Rail Option		Welded Rail Option	
			No. of studs	No. of studs	No. of Anchor Plates	
W. Abut.	2"	29'-9"	158	100	58	
E. Abut.	2"	33'-2"	172	108	64	

LOCKING EDGE RAILS

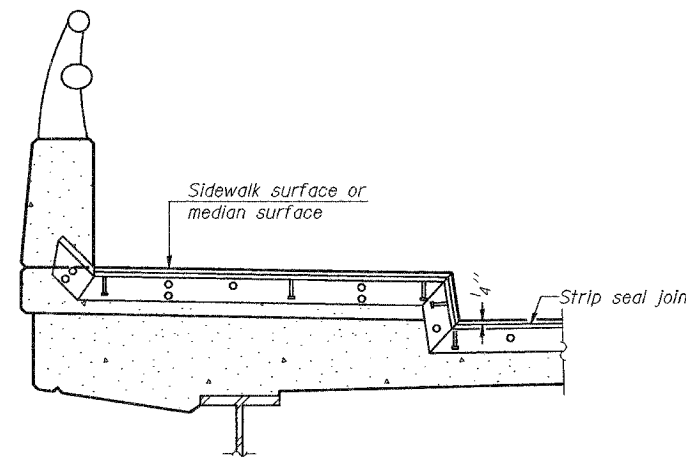


LOCKING EDGE RAIL SPLICE

The inside of the locking edge rail groove shall be free of weld residue.



AT CURB, PARAPET, OR WALL



AT SIDEWALK OR MEDIAN*

* Shorter plates with a single row of studs at 12" centers may be necessary on medians which are shallower than 9". See manufacturer's recommendation.

TYPICAL END TREATMENTS

BILL OF MATERIAL

Item	Unit	Total
Preformed Joint	Foot	63
Strip Seal, 4"		

STRIP SEAL EXPANSION JOINT
F.A.U. ROUTE 7968
SECTION 3R(BR, BR-1, BR-2)19RS-8
SANGAMON COUNTY
STATION 17+97.34
STRUCTURE NO. 084-0518

DESIGNED	J. Mann
CHECKED	G. Ahanchi
DRAWN	BECKY M. LEACH
CHECKED	JWM/GRA

EXAMINED	Thomas J. Damagalki	December 1, 2005
PASSED	Ralph E. Anderson	