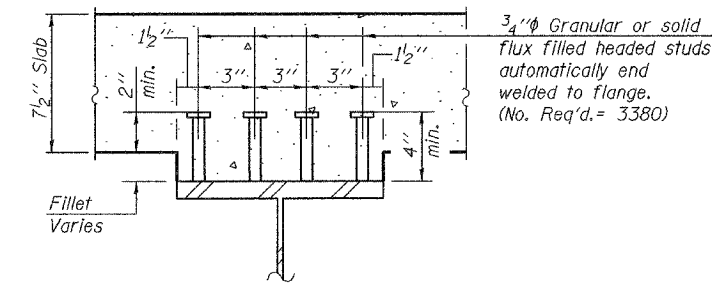


STATE OF ILLINOIS
DEPARTMENT OF TRANSPORTATION

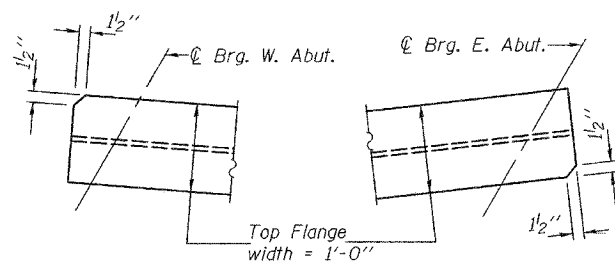
ROUTE NO.	SECTION	COUNTY	TOTAL SHEETS	SHEET NO.
FAU 7968	#	SANGAMON	261	133
FED. ROAD DIST. NO. 7	ALIGNED	FED. AID PROJECT		

SHEET NO. 13
33 SHEETS

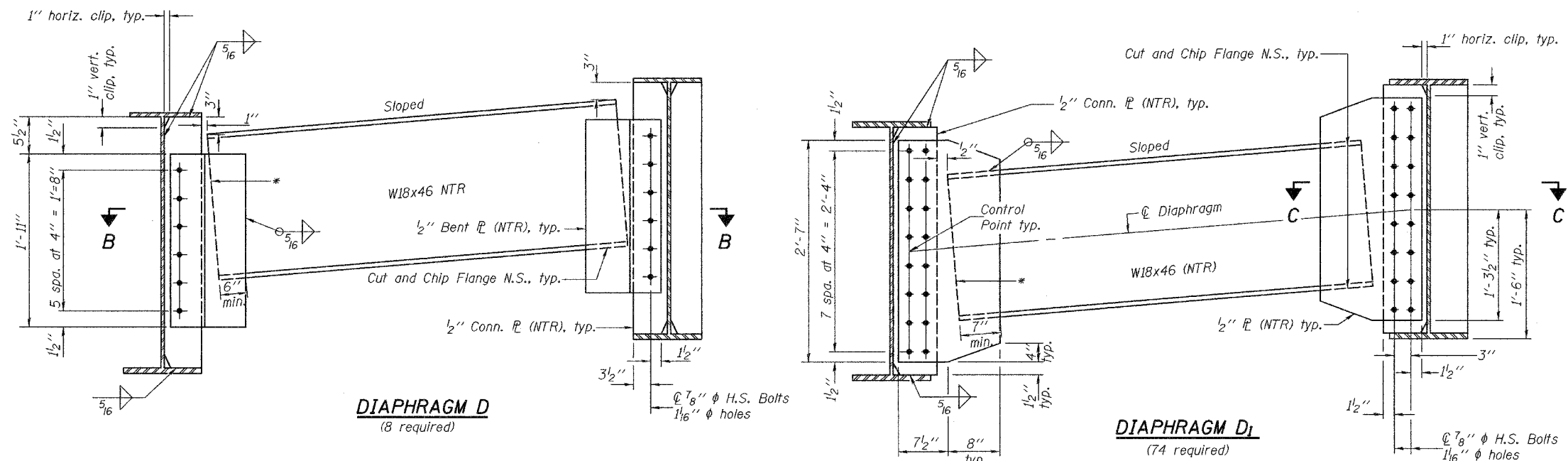
Contract #72449 *SECTION 3R(BR, BR-1, BR-2)19RS-8



SECTION A-A



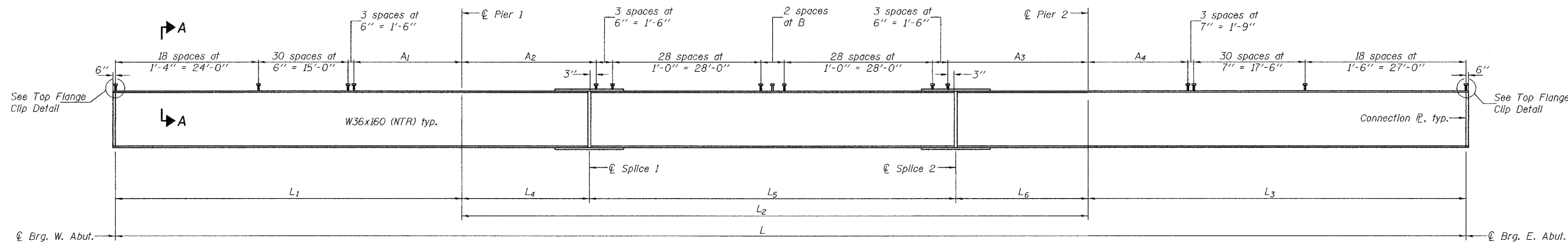
TOP FLANGE CLIP DETAIL
(Clip corner of Top Flange in shop)



DIAPHRAGM D
(8 required)

DIAPHRAGM D1
(74 required)

*End of Diaphragm may be cut "square" or parallel to Connection PL.



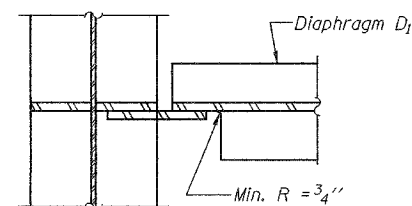
BEAM ELEVATION

TABLE OF A1 thru A4 DIMENSIONS

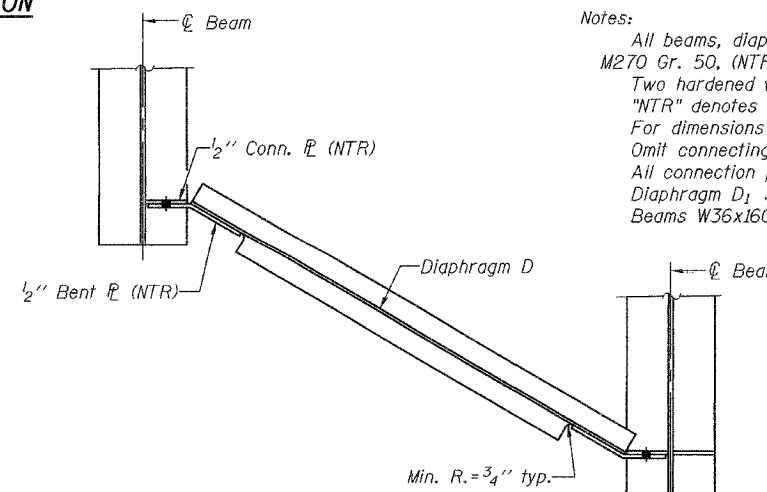
	A1	A2	A3	A4
Beam 1	21'-8 3/4"	17'-6 1/4"	18'-4 1/8"	21'-3"
Beam 2	21'-7 3/4"	17'-7 3/16"	18'-1 1/16"	21'-1 1/16"
Beam 3	21'-6 13/16"	17'-6 3/16"	17'-10 1/8"	20'-11 3/16"
Beam 4	21'-5 7/8"	17'-11 1/8"	17'-7 3/16"	20'-9 5/16"
Beam 5	21'-5"	17'-8"	17'-4 5/16"	20'-7 1/2"

TABLE OF "B" DIMENSIONS

	B
Beam 1	1'-0"
Beam 2	1'-0"
Beam 3	1'-1"
Beam 4	11"
Beam 5	1'-1"



SECTION C-C



SECTION B-B

Notes:
All beams, diaphragms, Bent plates, and diaphragm connection plates shall be AASHTO M270 Gr. 50, (NTR).
Two hardened washers shall be required over all oversized holes for diaphragms.
"NTR" denotes elements to which notch toughness requirements are applicable.
For dimensions L thru L6 see sheet 12 of 33.
Omit connecting plates on exterior side of exterior beams.
All connection plates shall be placed radially.
Diaphragm D1 shall be placed radially.
Beams W36x160 shall be fabricated to their respective radii.

DESIGNED	J. Mann
CHECKED	G. Ahanchi
DRAWN	BECKY M. LEACH
CHECKED	JWM/GRA

EXAMINED	December 1, 2005
PASSED	Thomas J. Demagala ENGINEER OF BRIDGE DESIGN
	Ralph E. Anderson ENGINEER OF BRIDGES AND STRUCTURES

STRUCTURAL STEEL DETAILS
F.A.U. ROUTE 7968
SECTION 3R(BR, BR-1, BR-2)19RS-8
SANGAMON COUNTY
STATION 17+97.34
STRUCTURE NO. 084-0518