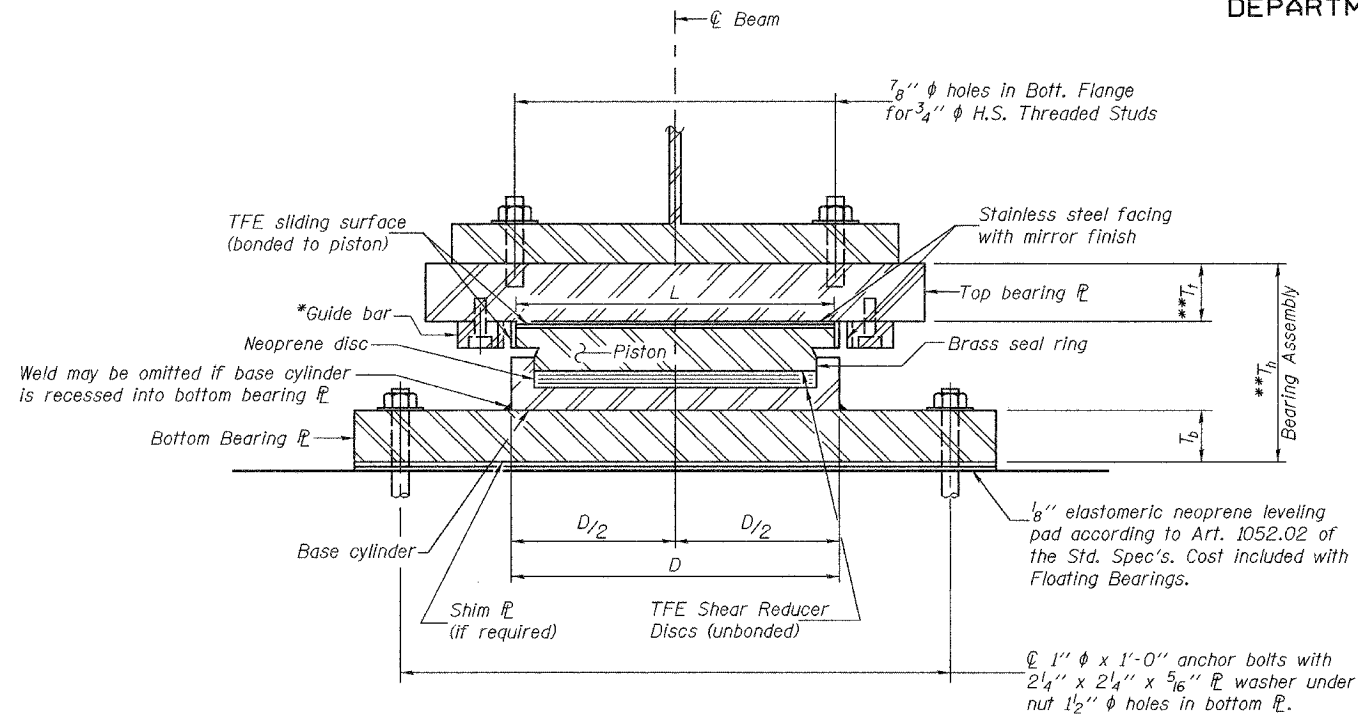


STATE OF ILLINOIS
DEPARTMENT OF TRANSPORTATION

ROUTE NO.	SECTION	COUNTY	SHEET NO.	SHEET	SHEET NO.
FAU 7968	*	SANGAMON	2.61	185	33 SHEETS
FED. ROAD DIST. NO. 7	ILLINOIS	FED. AID PROJECT			

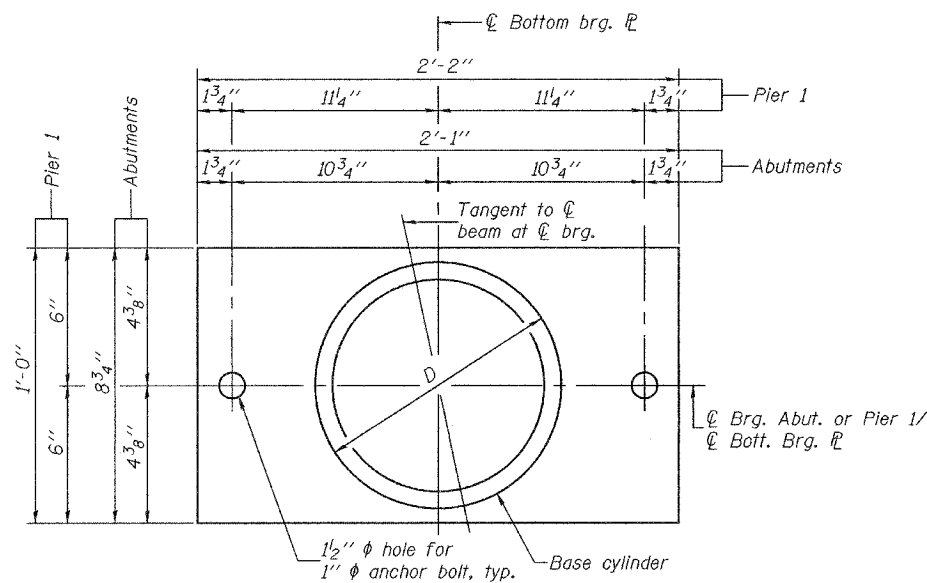
Contract #72449 *SECTION 3R(BR, BR-1, BR-2)19RS-8



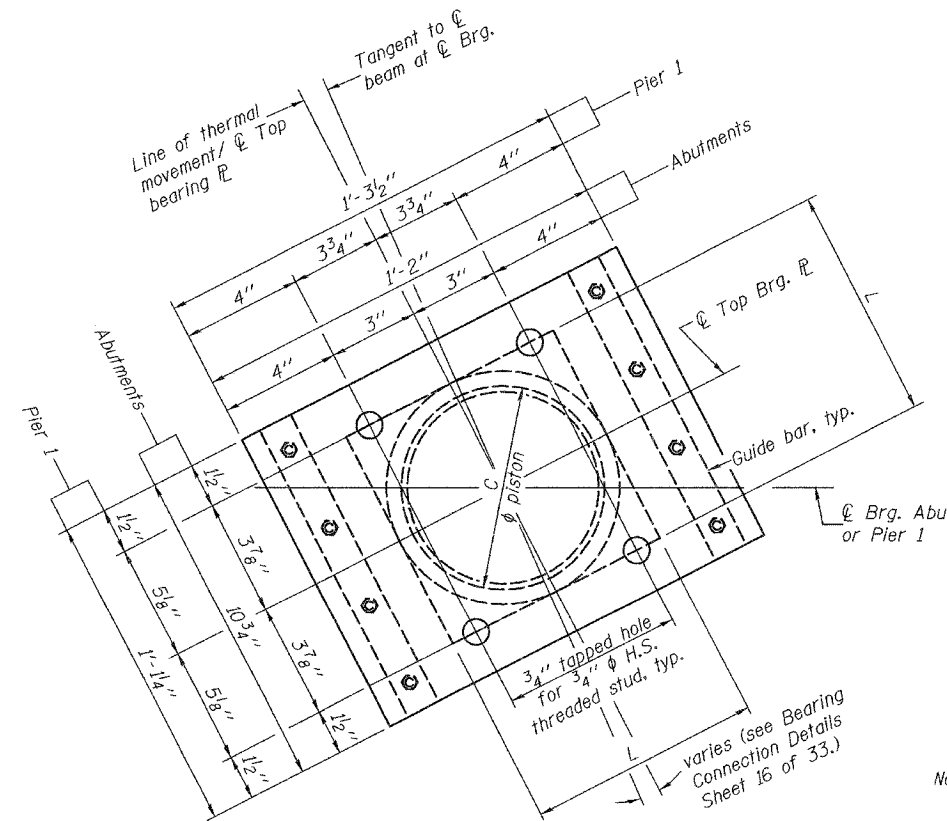
**GUIDED EXPANSION FLOATING BEARING
ABUTMENTS AND PIER 1**

	W. Abut.	Pier 1	E. Abut.
Vertical Design Load	72 kip	187 kip	72 kip
Total Required Movement	2"	1 1/4"	1"
L	6 3/4"	10"	6 3/4"
D	6 3/4"	10"	6 3/4"
C	5 1/4"	8 1/2"	5 1/4"
**T _t	1 5/8"	2 1/4"	1 3/4"
T _b	2"	2 1/4"	2"
**T _h	7 5/8"	8 1/2"	7 3/4"

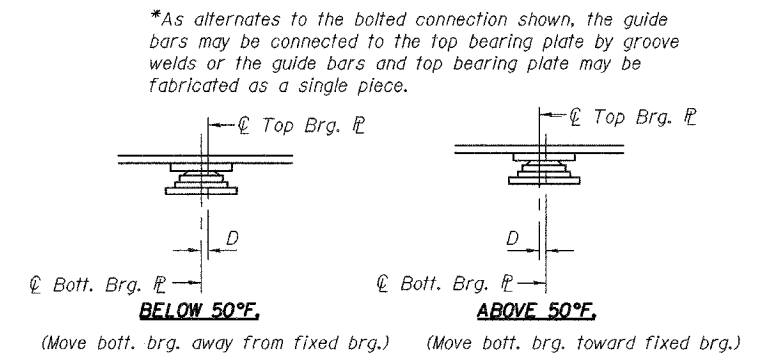
**measured at ϕ of bearing
(See sheet 16 of 33 for Top Bearing ϕ taper details).



**BOTTOM BEARING ϕ AND
BASE CYLINDER PLAN**



TOP BEARING ϕ & PISTON PLAN



SETTING ANCHOR BOLTS AT EXP. BRG.

D = 1/8" per each 100' of expansion for every 15° temp. change from the normal temp. of 50°F.

BILL OF MATERIAL

Item	Unit	Total
Floating Bearings,	Each	10
Guided Expansion 75 kip		
Floating Bearings,	Each	5
Guided Expansion 200 kip		

EXPANSION BEARING DETAILS

F.A.U. ROUTE 7968
SECTION 3R(BR, BR-1, BR-2)19RS-8
SANGAMON COUNTY
STATION 17+97.34
STRUCTURE NO. 084-0518

Notes:
The plates of the Bearing Assembly shall be AASHTO M 270, Grade 50.
For anchor bolt installation details, see sheet 18 of 33.

DESIGNED	J. Mann
CHECKED	G. Ahanchi
DRAWN	BECKY M. LEACH
CHECKED	JWM/GRA

December 1, 2005
 EXAMINED *Thomas J. Damagalki*
 PASSED *Ralph E. Anderson*
 ENGINEER OF BRIDGE DESIGN
 ENGINEER OF BRIDGES AND STRUCTURES