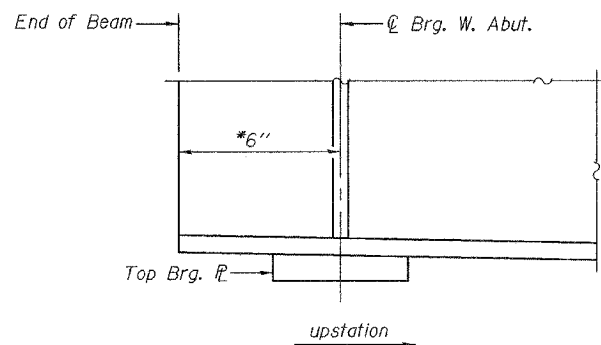


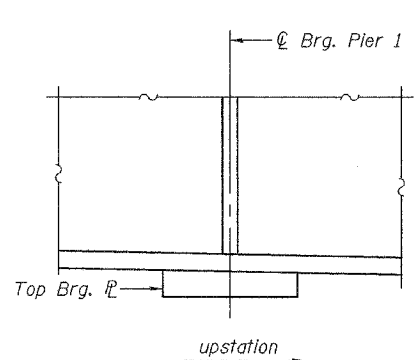
STATE OF ILLINOIS  
DEPARTMENT OF TRANSPORTATION

|                       |          |                  |            |           |              |
|-----------------------|----------|------------------|------------|-----------|--------------|
| ROUTE NO.             | SECTION  | COUNTY           | POST MILES | SHEET NO. | SHEET NO. 16 |
| FAU 7968              | *        | SANGAMON         | 261        | 186       | 33 SHEETS    |
| FED. ROAD DIST. NO. 7 | ILLINOIS | FED. AID PROJECT |            |           |              |

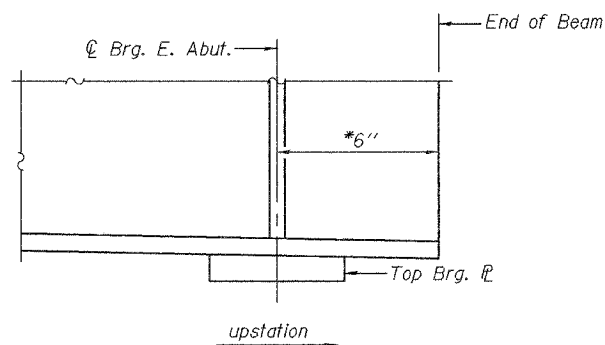
Contract #72449 \*SECTION 3R(BR, BR-1, BR-2)19RS-8



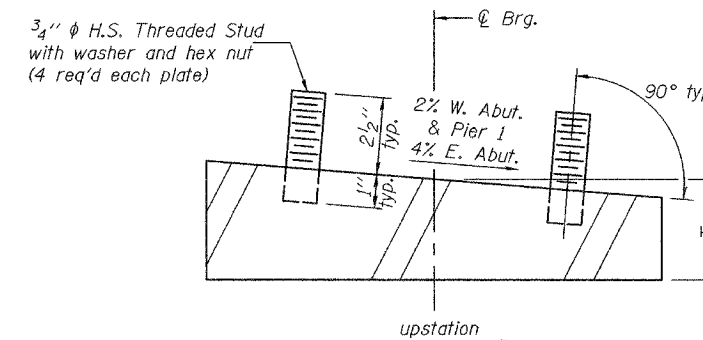
**TOP PLATE TAPER DETAIL  
AT WEST ABUTMENT**



**TOP PLATE TAPER DETAIL AT PIER 1**

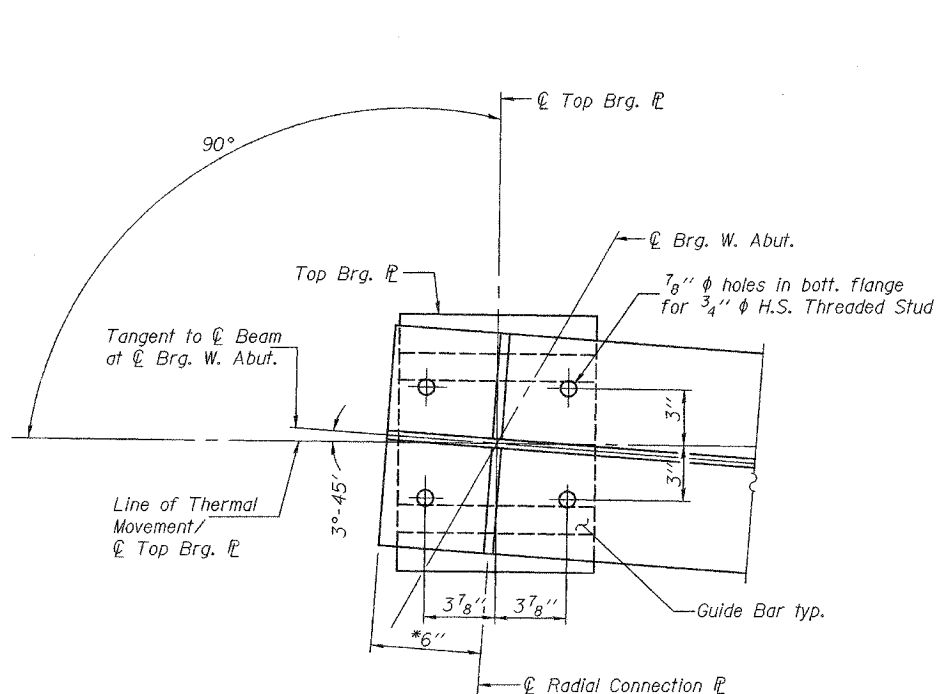


**TOP PLATE TAPER DETAIL  
AT EAST ABUTMENT**

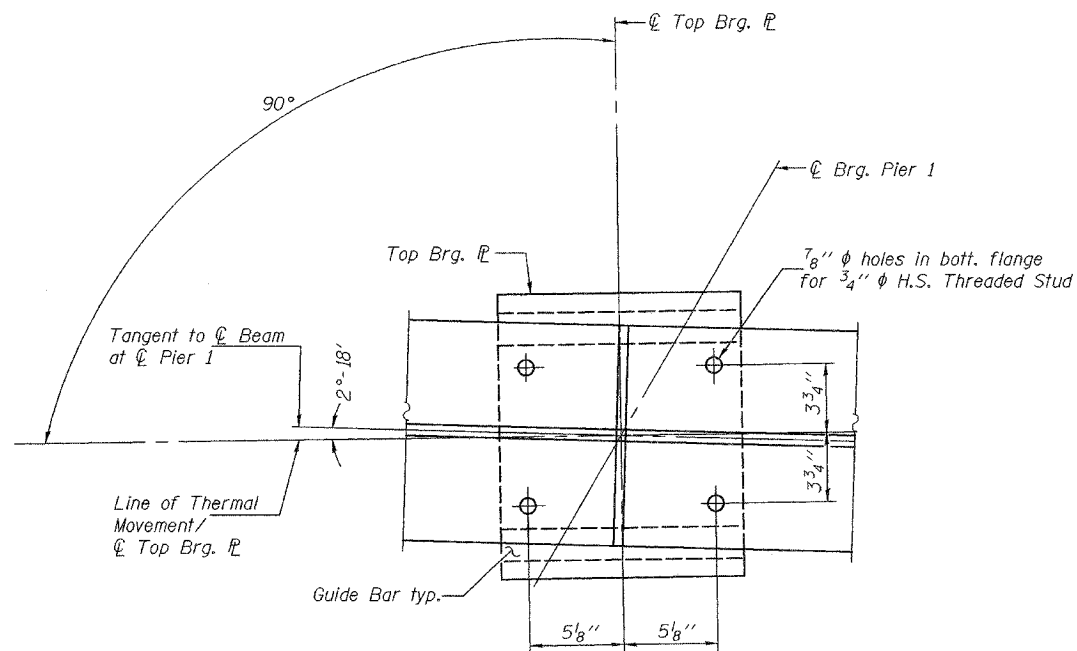


**TOP BEARING PLATE SECTION**

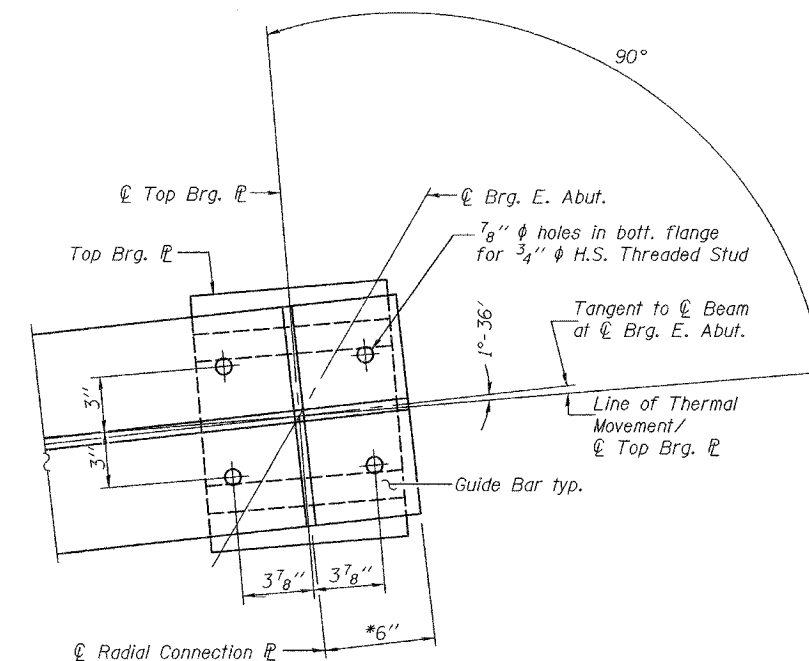
\*measured along CL beam.



**W. ABUTMENT BEARING CONNECTION DETAIL**



**PIER 1 BEARING CONNECTION DETAIL**



**E. ABUTMENT BEARING CONNECTION DETAIL**

|          |                |
|----------|----------------|
| DESIGNED | J. Mann        |
| CHECKED  | G. Ahanchi     |
| DRAWN    | BECKY M. LEACH |
| CHECKED  | JWM/GRA        |

|          |   |
|----------|---|
| EXAMINED | December 1, 2005  |
| PASSED   | Thomas J. Domagala<br>PROFESSOR OF BRIDGE DESIGN        |
|          | Ralph E. Anderson<br>ENGINEER OF BRIDGES AND STRUCTURES |

**EXPANSION BEARING DETAILS**  
F.A.U. ROUTE 7968  
SECTION 3R(BR, BR-1, BR-2)19RS-8  
SANGAMON COUNTY  
STATION 17+97.34  
STRUCTURE NO. 084-0518