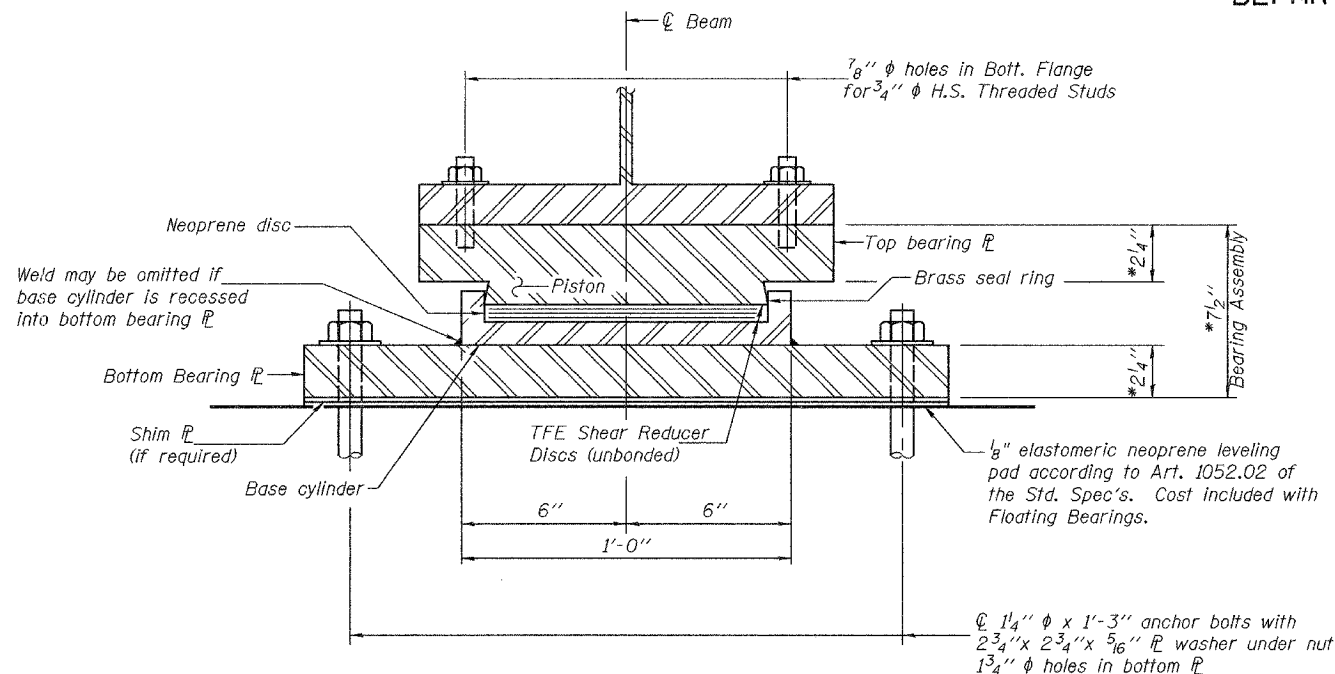


STATE OF ILLINOIS  
DEPARTMENT OF TRANSPORTATION

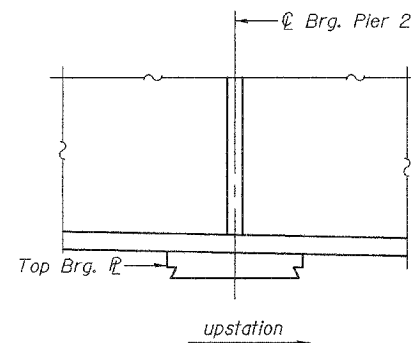
ROUTE NO.	SECTION	COUNTY	LENG. FEET	SHEET NO.	SHEET NO. 17 33 SHEETS
FAU 7968	*	SANGAMON	2.61	187	
FED. ROAD DIST. NO. 7	ILLINOIS	FED. AID PROJECT-			

Contract #72449 \*SECTION 3R(BR, BR-1, BR-2)19RS-8

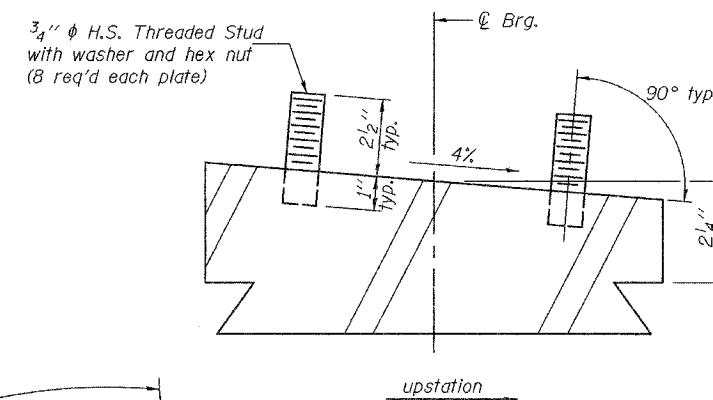


**FIXED FLOATING BEARING  
AT PIER 2**

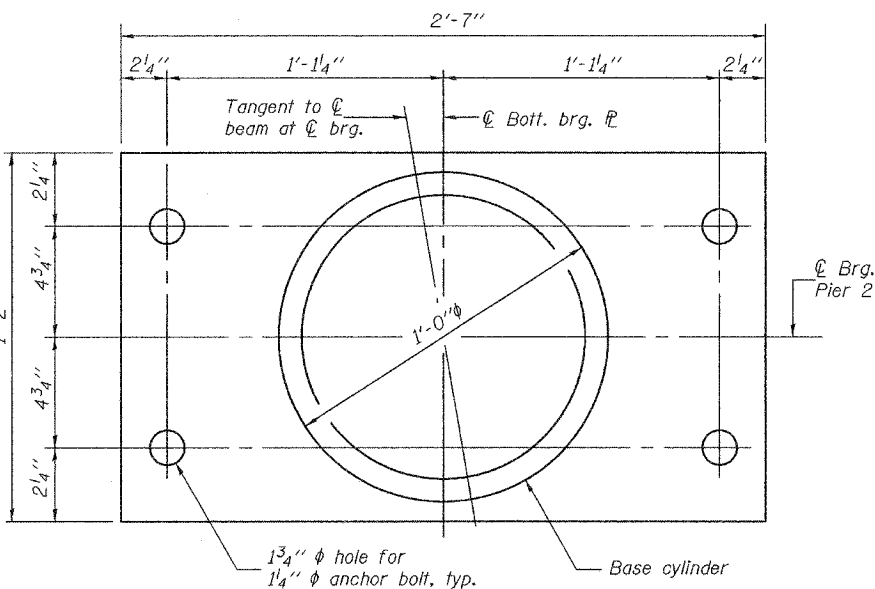
\*measured at  $\phi$  of Brg.



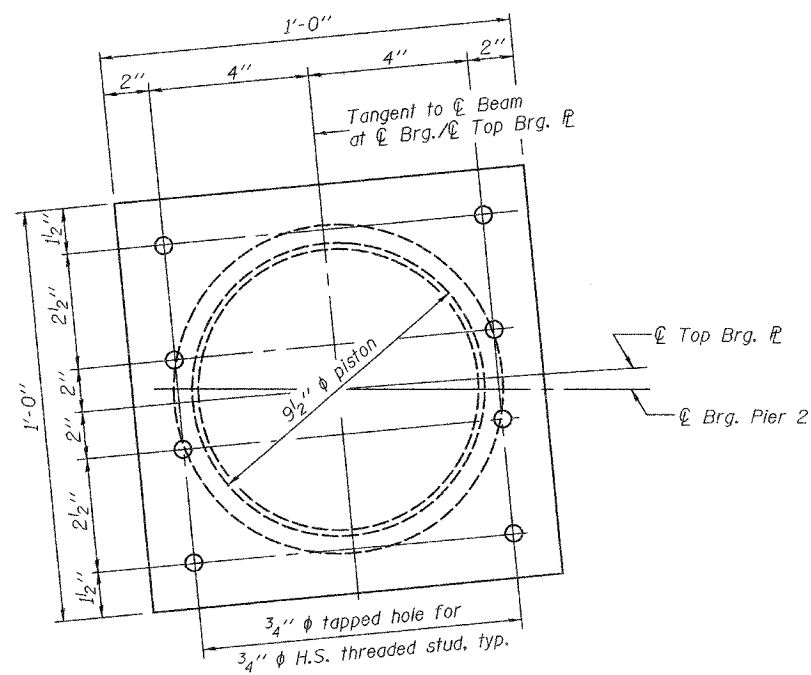
**TOP BRG. DETAIL AT PIER 2**



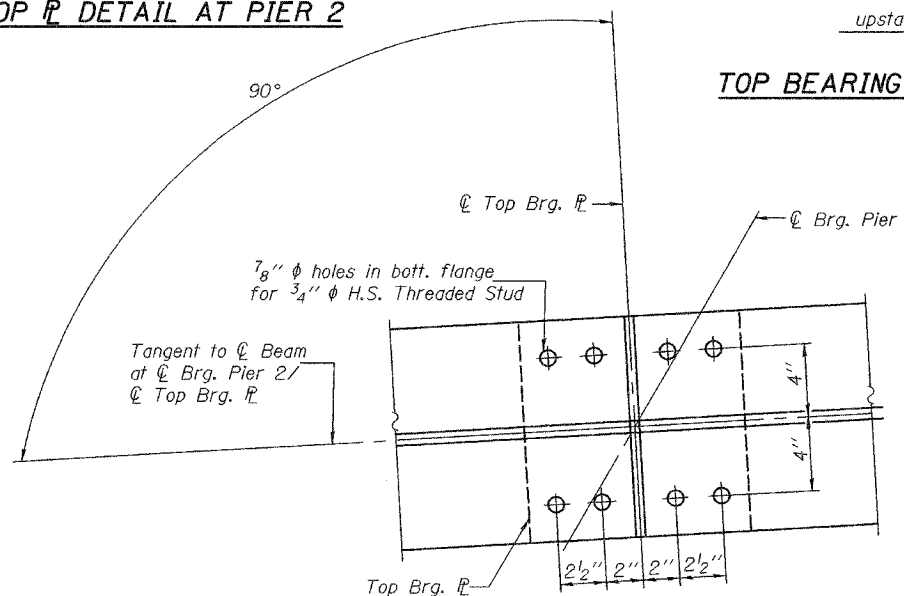
**TOP BEARING PLATE SECTION**



**BOTTOM BEARING PLATE AND  
BASE CYLINDER PLAN**



**TOP BEARING PLATE AND  
PISTON PLAN**



**PIER 2 BEARING CONNECTION DETAIL**

BEARING DATA	
Vertical design load	187 kip
Lateral design load	42.3 kip

**BILL OF MATERIAL**

Item	Unit	Total
Floating Bearings, Fixed 200 kip	Each	5

**FIXED BEARING DETAILS**  
E.A.U. ROUTE 7968  
SECTION 3R(BR, BR-1, BR-2)19RS-8  
SANGAMON COUNTY  
STATION 17+97.34  
STRUCTURE NO. 084-0518

DESIGNED	J. Mann
CHECKED	G. Ahanchi
DRAWN	BECKY M. LEACH
CHECKED	JWM/GRA

December 1, 2005  
EXAMINED *Thomas J. Damagalki*  
PASSED *Ralph E. Anderson*  
ENGINEER OF BRIDGES AND STRUCTURES

Notes: The plates of the Bearing Assembly shall be AASHTO M270, Grade 50.  
For anchor bolt installation details, see sheet 18 of 33.