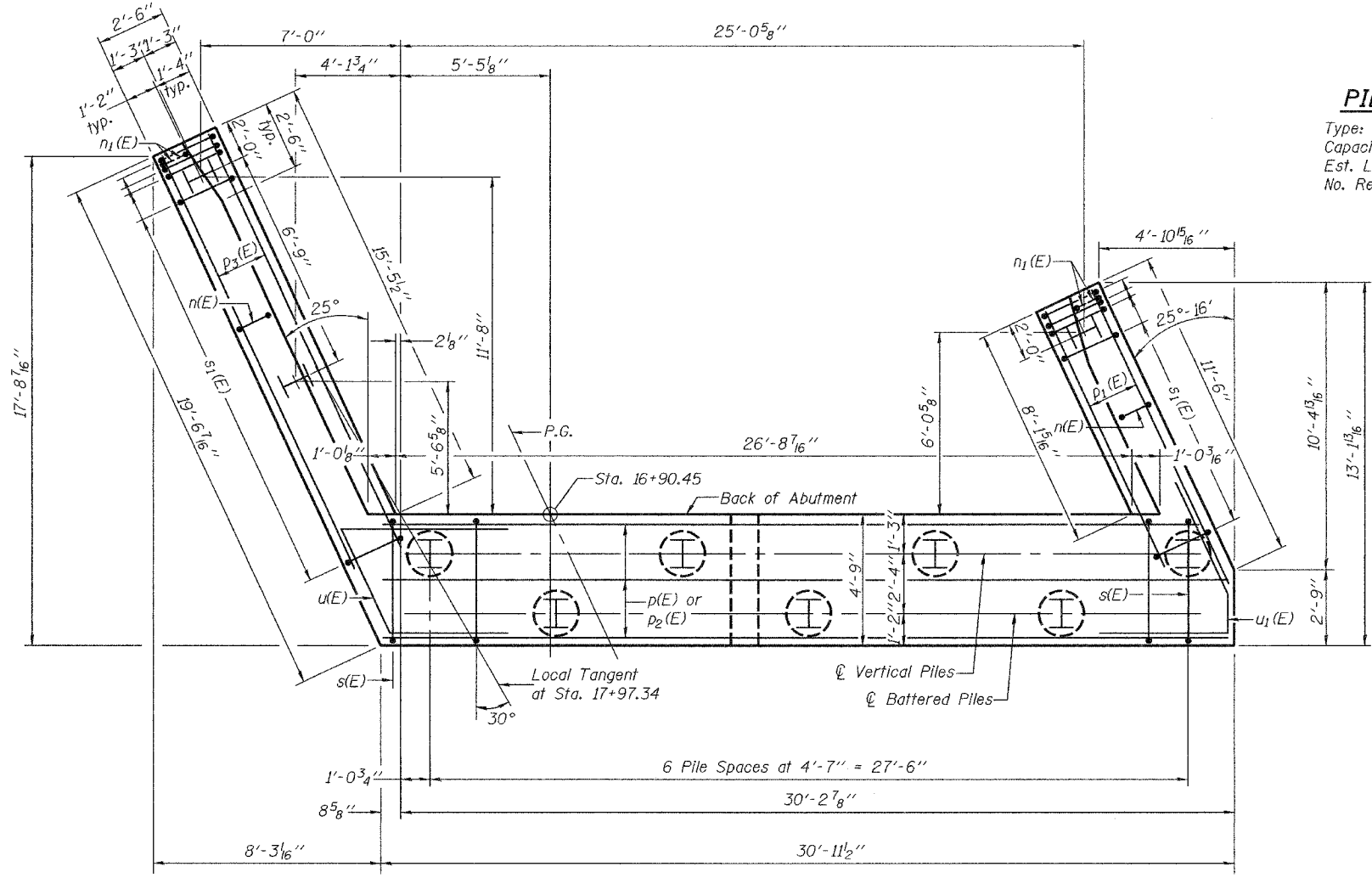
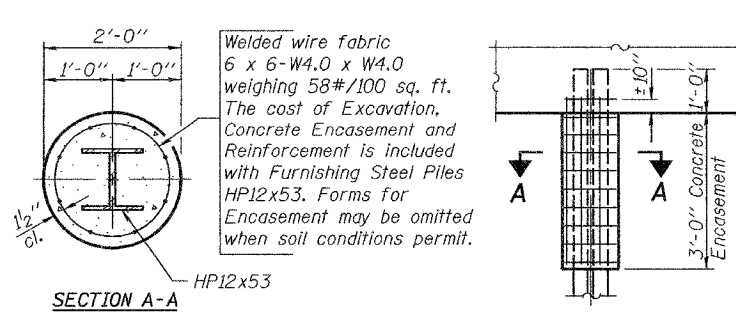
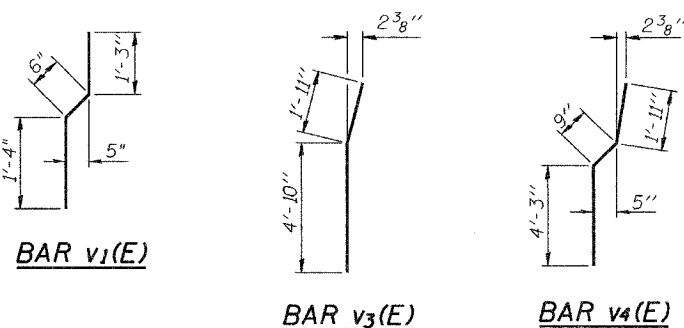
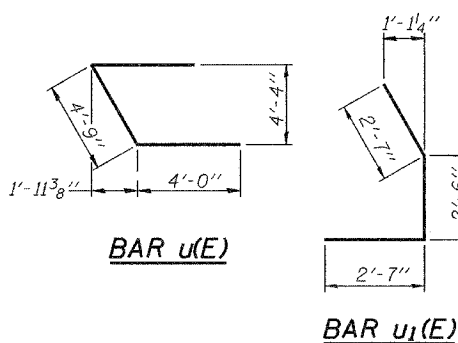
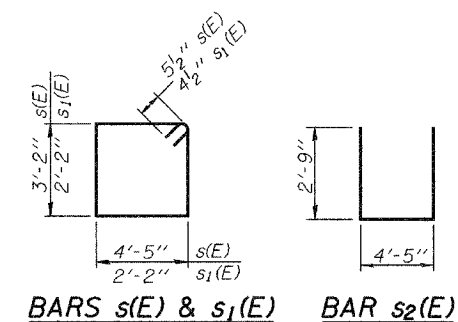
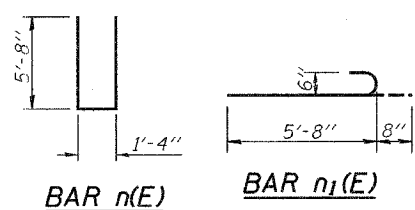
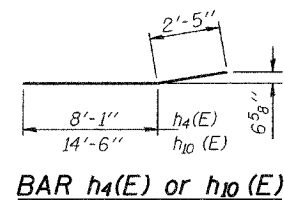
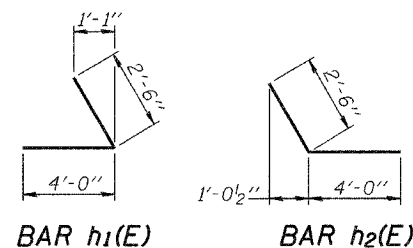


STATE OF ILLINOIS
DEPARTMENT OF TRANSPORTATION

ROUTE NO.	SECTION	COUNTY	DATE	SHEET NO.	SHEET NO. 20
FAU 7968	*	SANGAMON	261	19D	33 SHEETS
FED. ROAD DIST. NO. 7	ILLINOIS	FED. AID PROJECT			

Contract #72449 *SECTION 3R(BR, BR-1, BR-2)19RS-8



PILE DATA

Type: HP12x53
Capacity: Driven to Refusal
Est. Length: 27'
No. Required: 9 + 1 test pile

**WEST ABUTMENT
BILL OF MATERIAL**

Bar	No.	Size	Length	Shape
h(E)	16	#5	15'-4"	—
h1(E)	12	#5	6'-6"	└
h2(E)	12	#5	6'-6"	└
h3(E)	9	#4	11'-3"	—
h4(E)	7	#4	10'-6"	—
h5(E)	8	#6	15'-7"	—
h6(E)	6	#5	11'-6"	—
h7(E)	3	#5	4'-11"	—
h8(E)	2	#4	10'-6"	—
h9(E)	9	#4	16'-3"	—
h10(E)	7	#4	16'-11"	—
h11(E)	2	#4	16'-6"	—
n(E)	25	#6	12'-8"	—
n1(E)	12	#6	6'-4"	—
p(E)	13	#8	18'-3"	—
p1(E)	6	#7	11'-4"	—
p2(E)	3	#8	17'-0"	—
p3(E)	6	#7	17'-6"	—
s(E)	32	#5	16'-1"	□
s1(E)	30	#4	9'-5"	□
s2(E)	27	#4	9'-11"	□
u(E)	5	#6	12'-9"	└
u1(E)	4	#6	7'-8"	└
v(E)	58	#5	6'-0"	—
v1(E)	29	#4	3'-1"	—
v2(E)	31	#6	6'-6"	—
v3(E)	6	#6	6'-9"	—
v4(E)	25	#6	6'-11"	—
v5(E)	29	#5	3'-2"	—
Structure Excavation		Cu. Yd.	199	
Concrete Structures		Cu. Yd.	43.9	
Reinforcement Bars, Epoxy Coated		Pound	4920	
Furnishing Steel Piles HP12x53		Foot	243	
Test Pile Steel HP12x53		Each	1	
Driving Steel Piles		Foot	243	

Reinforcement bars designated (E) shall be epoxy coated.
For details of Bar Splicers, see sheet 30 of 33.

WEST ABUTMENT DETAILS
F.A.U. ROUTE 7968
SECTION 3R(BR, BR-1, BR-2)19RS-8
SANGAMON COUNTY
STATION 17+97.34
STRUCTURE NO. 084-0518

DESIGNED	J. Mann
CHECKED	G. Ahanchi
DRAWN	BECKY M. LEACH
CHECKED	JWM/GRA

December 1, 2005
EXAMINED *Thomas J. Domagala*
PASSED *Ralph E. Anderson*