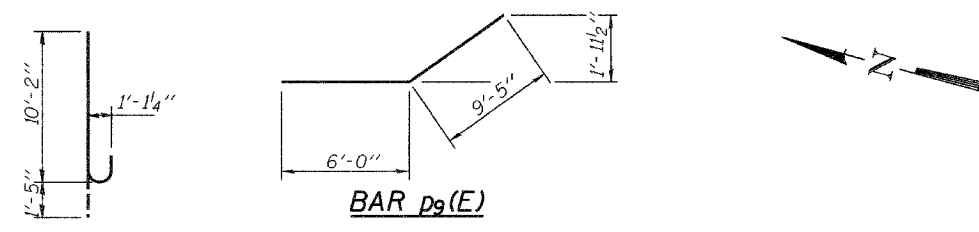


STATE OF ILLINOIS
DEPARTMENT OF TRANSPORTATION

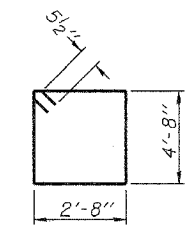
ROUTE NO.	SECTION	COUNTY	TOTAL SHEETS	SHEET NO.
FAU 7968	*	SANGAMON	261	195
SHEET NO. 25 33 SHEETS				
FED. ROAD DIST. NO. 7	ILLINOIS	FED. AID PROJECT		
Contract #72449 *SECTION 3R(BR, BR-1, BR-2)19RS-8				



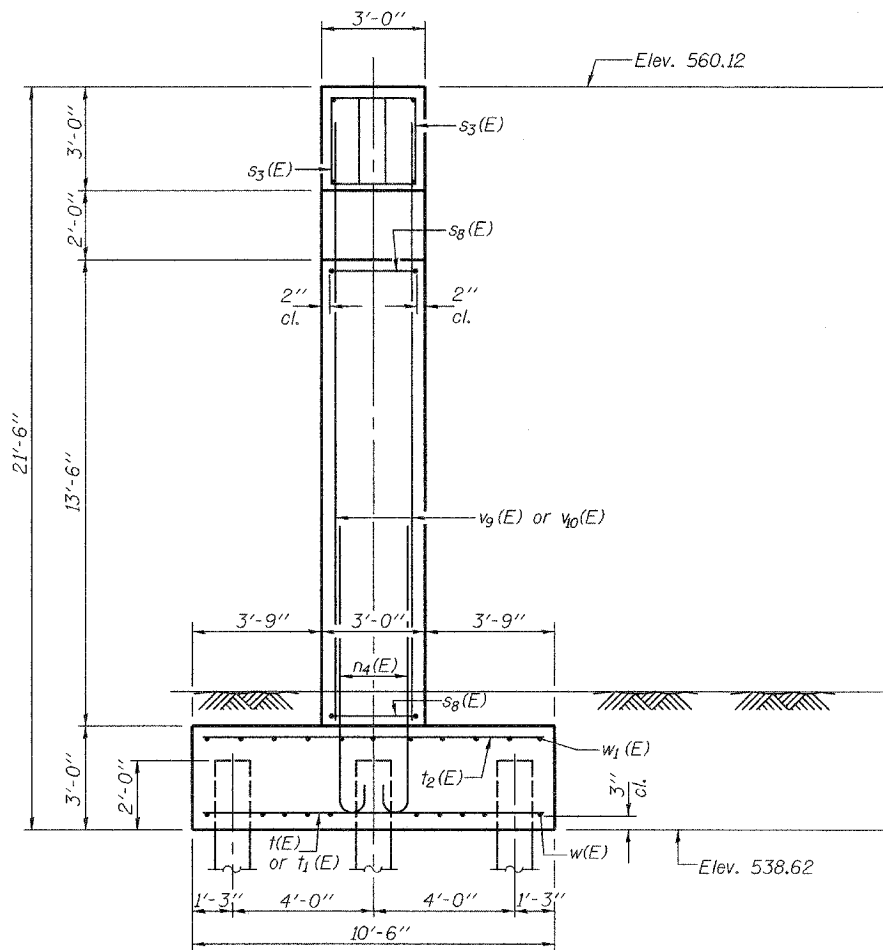
A & B Dimensions

Bar	A	B
u4(E)	2'-6"	2'-7"
s3(E)	2'-0"	2'-8"
s4(E)	2'-0"	3'-0"
s5(E)	2'-0"	3'-5"
s7(E)	2'-8"	2'-8"
s8(E)	2'-8"	4'-0"

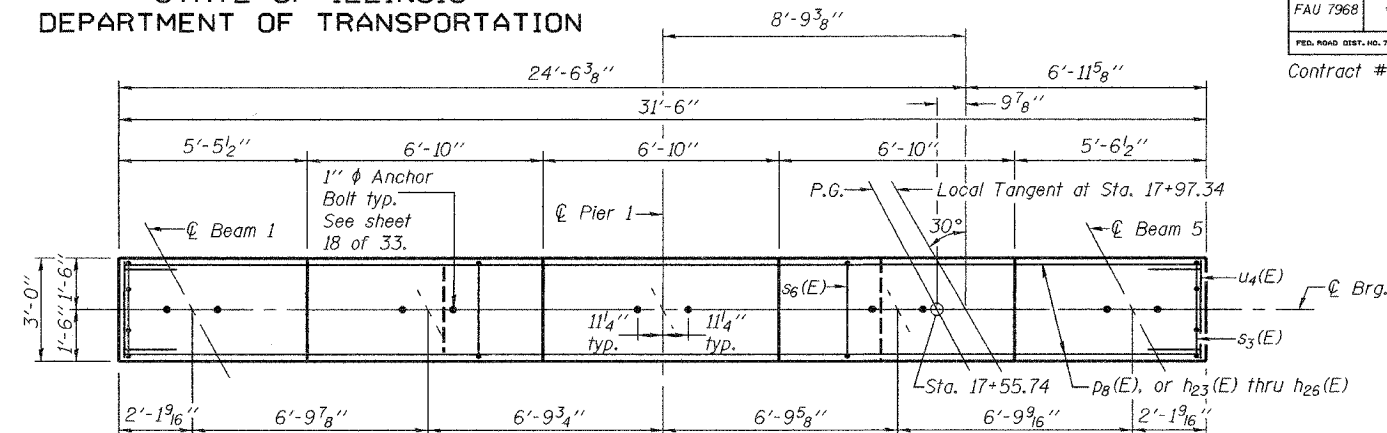
BARS u4(E), s3(E), s4(E),
s5(E), s7(E), s8(E)



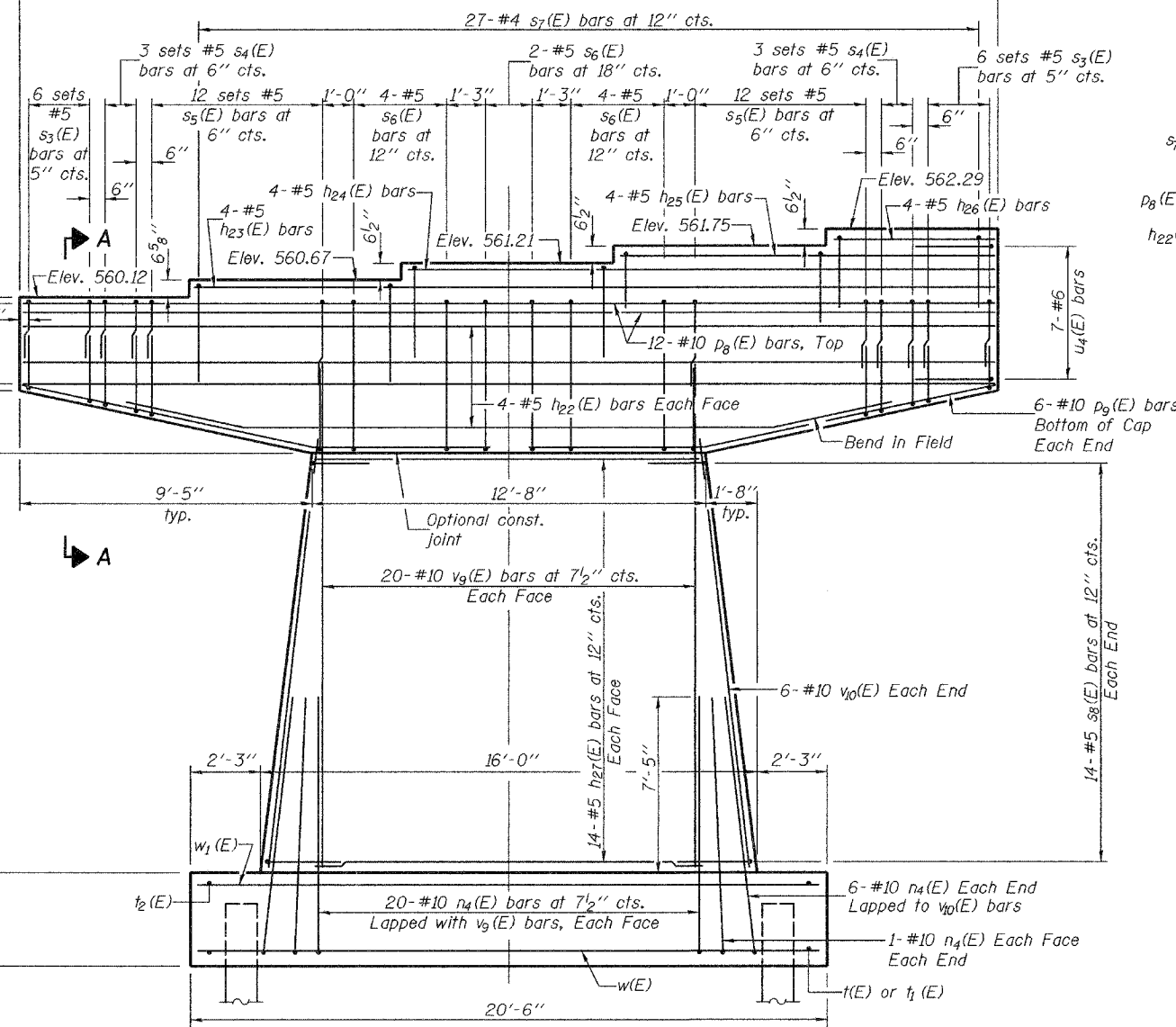
BAR s6(E)



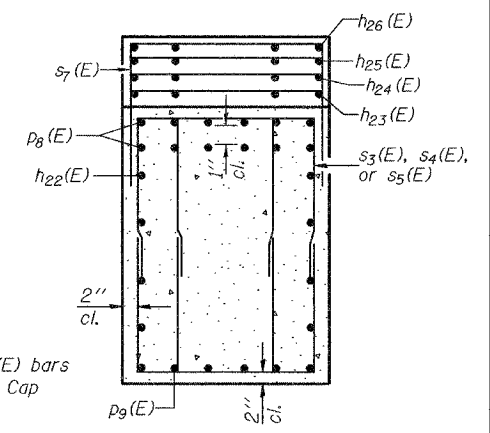
END VIEW



TOP PLAN



ELEVATION
(Looking East)



SECTION A-A

MIN BAR LAP
#5 bars = 2'-2"
#10 bars = 7'-3"

DESIGNED	J. Mann
CHECKED	G. Ahanchi
DRAWN	BECKY M. LEACH
CHECKED	JWM/GRA

December 1, 2005
EXAMINED *Thomas J. Domagala*
PASSED *Ralph E. Anderson*

Notes:
Space reinforcement in cap to miss anchor bolts.
Pour steps monolithically with cap.
Each set of s3(E), s4(E), and s5(E) bars has 4 bars
(2 top and 2 bottom) See Section A-A.

PIER 1
F.A.U. ROUTE 7968
SECTION 3R(BR, BR-1, BR-2)19RS-8
SANGAMON COUNTY
STATION 17+97.34
STRUCTURE NO. 084-0518