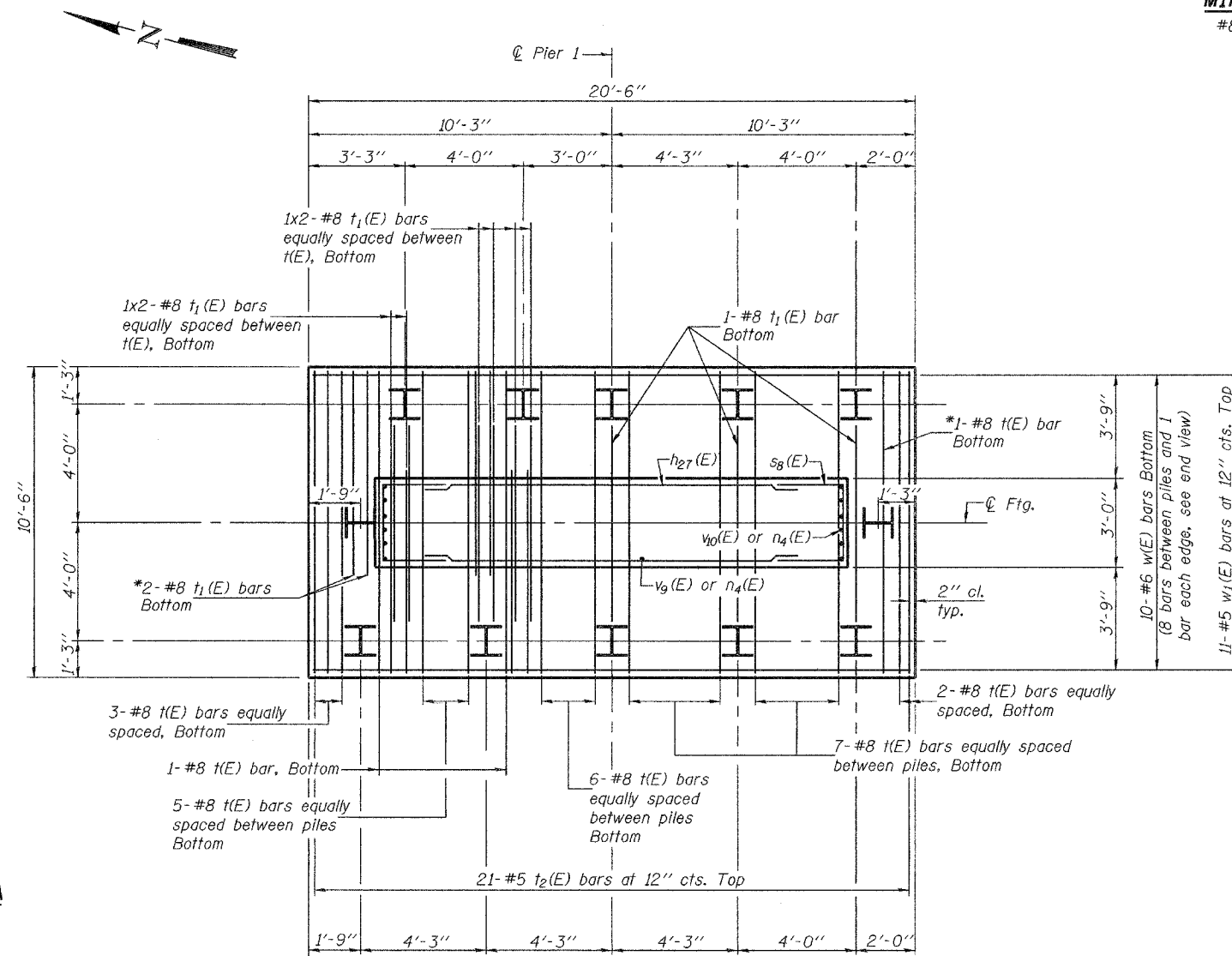


STATE OF ILLINOIS
DEPARTMENT OF TRANSPORTATION

ROUTE NO.	SECTION	COUNTY	SHEET NO.	SHEET	SHEET NO.
FAU 7968	*	SANGAMON	261	196	33 SHEETS
FED. ROAD DIST. NO. 7		ILLINOIS		FED. AID PROJECT	

Contract #72449 *SECTION 3R(BR, BR-1, BR-2)19RS-8

MIN. BAR LAP
#8 bars = 4'-6"



FOOTING PLAN

*Field drill 1 1/4" ϕ hole in pile for #8 bar

PILE DATA

Type: HP12x74
Capacity: Refusal
Est. Length: 59'
No. Req'd.: 11 + 1 test pile

PIER 1
BILL OF MATERIAL

Bar	No.	Size	Length	Shape
h22(E)	8	#5	31'-2"	—
h23(E)	4	#5	25'-8"	—
h24(E)	4	#5	18'-10"	—
h25(E)	4	#5	12'-0"	—
h26(E)	4	#5	5'-2"	—
h27(E)	28	#5	12'-0"	—
n4(E)	56	#10	11'-7"	C
p8(E)	12	#10	31'-2"	—
p9(E)	12	#10	15'-5"	—
s3(E)	48	#5	7'-4"	□
s4(E)	24	#5	8'-0"	□
s5(E)	96	#5	8'-10"	□
s6(E)	10	#5	15'-7"	□
s7(E)	27	#4	8'-0"	□
s8(E)	28	#5	10'-8"	□
t(E)	33	#8	10'-2"	—
t1(E)	17	#8	6'-9"	—
t2(E)	21	#5	10'-2"	—
u4(E)	11	#6	7'-8"	—
v9(E)	40	#10	17'-9"	—
v10(E)	12	#10	13'-8"	—
w(E)	10	#6	20'-2"	—
w1(E)	11	#5	20'-2"	—
Structure Excavation	Cu. Yd.		79	
Concrete Structures	Cu. Yd.		64.7	
Reinforcement Bars, Epoxy Coated	Pound		13,980	
Furnishing Steel Piles HP12x74	Foot		649	
Test Pile Steel HP12x74	Each		1	
Driving Steel Piles	Foot		649	

Reinforcement Bars designated (E) shall be epoxy coated.
Bars indicated thus 2x2-#8 etc. indicates 2 lines of bars with 2 lengths per line.

DESIGNED	J. Mann
CHECKED	G. Ahanchi
DRAWN	BECKY M. LEACH
CHECKED	JWM/GRA

EXAMINED	December 1, 2005
PASSED	Thomas J. Domagalicki ENGINEER OF BRIDGE DESIGN
	Ralph E. Anderson ENGINEER OF BRIDGES AND STRUCTURES

PIER 1 FOOTING PLAN
F.A.U. ROUTE 7968
SECTION 3R(BR, BR-1, BR-2)19RS-8
SANGAMON COUNTY
STATION 17+97.34
STRUCTURE NO. 084-0518