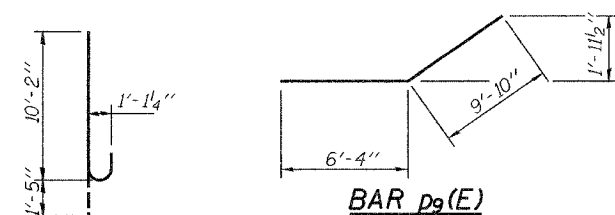


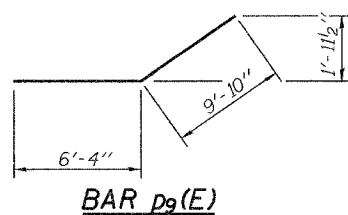
STATE OF ILLINOIS
DEPARTMENT OF TRANSPORTATION

ROUTE NO.	SECTION	COUNTY	TOTAL SHEETS	SHEET NO.
FAU 7968	*	SANGAMON	261	197
FED. ROAD DIST. NO. 7		ILLINOIS FED. AID PROJECT		
Contract #72449		*SECTION 3R(BR, BR-1, BR-2)19RS-8		

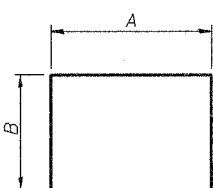
SHEET NO. 27
33 SHEETS



BAR $n_4(E)$



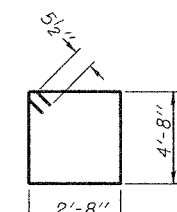
BAR $p_9(E)$



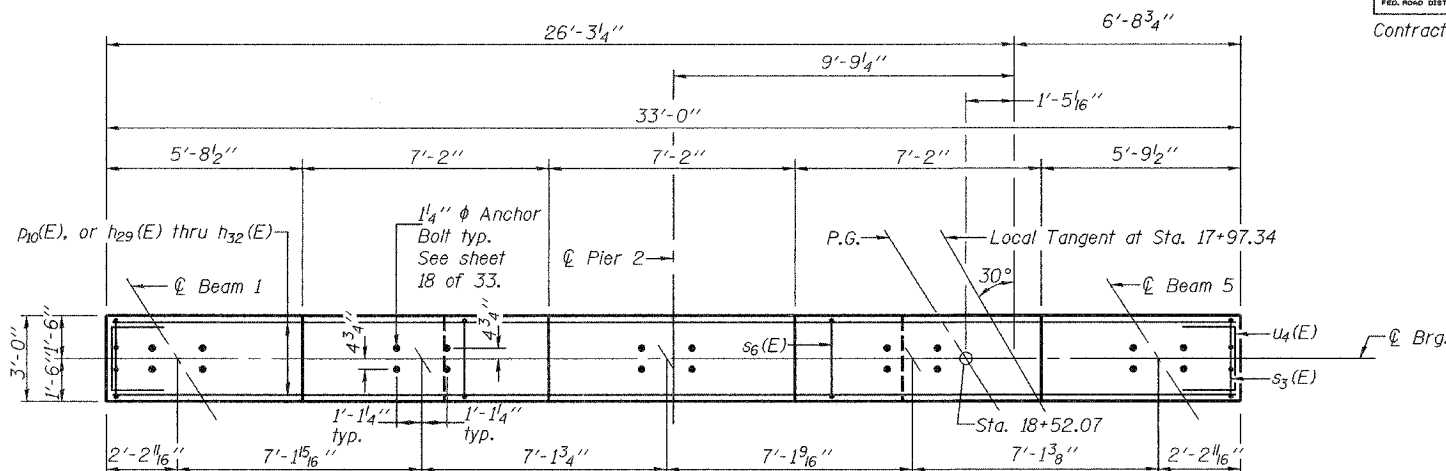
BARS $u_4(E)$, $s_3(E)$, $s_4(E)$,
 $s_5(E)$, $s_7(E)$, $s_8(E)$

A & B Dimensions

Bar	A	B
$u_4(E)$	2'-6"	2'-7"
$s_3(E)$	2'-0"	2'-8"
$s_4(E)$	2'-0"	3'-0"
$s_5(E)$	2'-0"	3'-5"
$s_8(E)$	2'-8"	4'-0"
$s_9(E)$	2'-8"	3'-0"



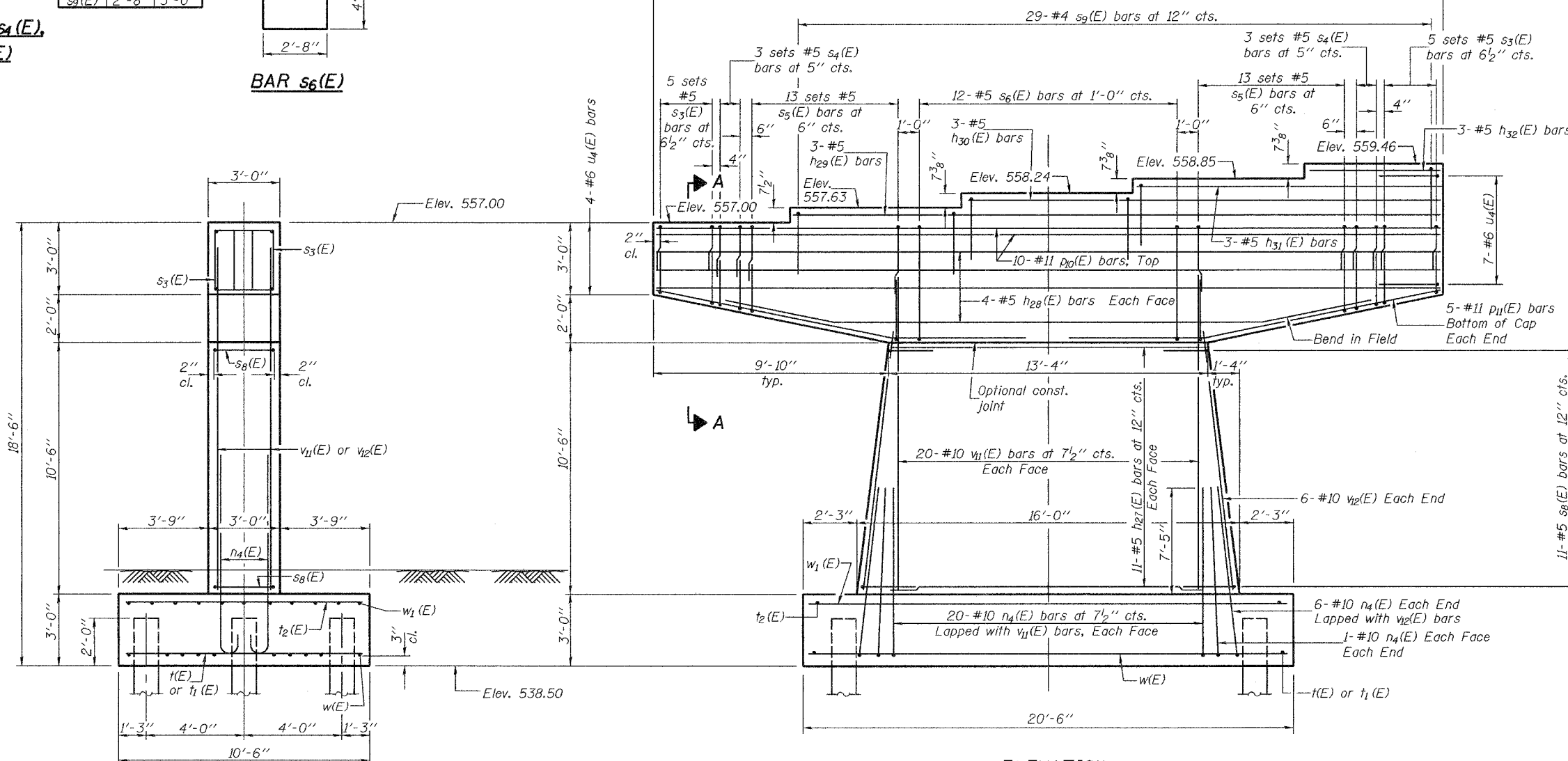
BAR $s_6(E)$



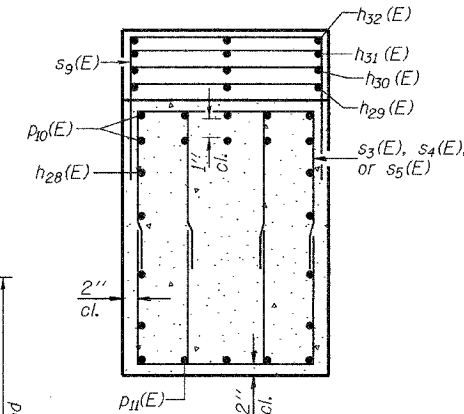
TOP PLAN

MIN BAR LAP

#5 bars = 2'-2"
#10 bars = 7'-3"



ELEVATION
(Looking East)



SECTION A-A

END VIEW

DESIGNED	J. Mann
CHECKED	G. Ahanchi
DRAWN	BECKY M. LEACH
CHECKED	JWM/GRA

December 1, 2005
EXAMINED *Thomas J. Domagala*
PASSED *Ralph E. Anderson*
ENGINEER OF BRIDGES AND STRUCTURES

Notes:
Space reinforcement in cap to miss anchor bolts.
Pour steps monolithically with cap.
Each set of $s_3(E)$, $s_4(E)$, and $s_5(E)$ bars has 4 bars
(2 top and 2 bottom) See Section A-A.

PIER 2
F.A.U. ROUTE 7968
SECTION 3R(BR, BR-1, BR-2)19RS-8
SANGAMON COUNTY
STATION 17+97.34
STRUCTURE NO. 084-0518