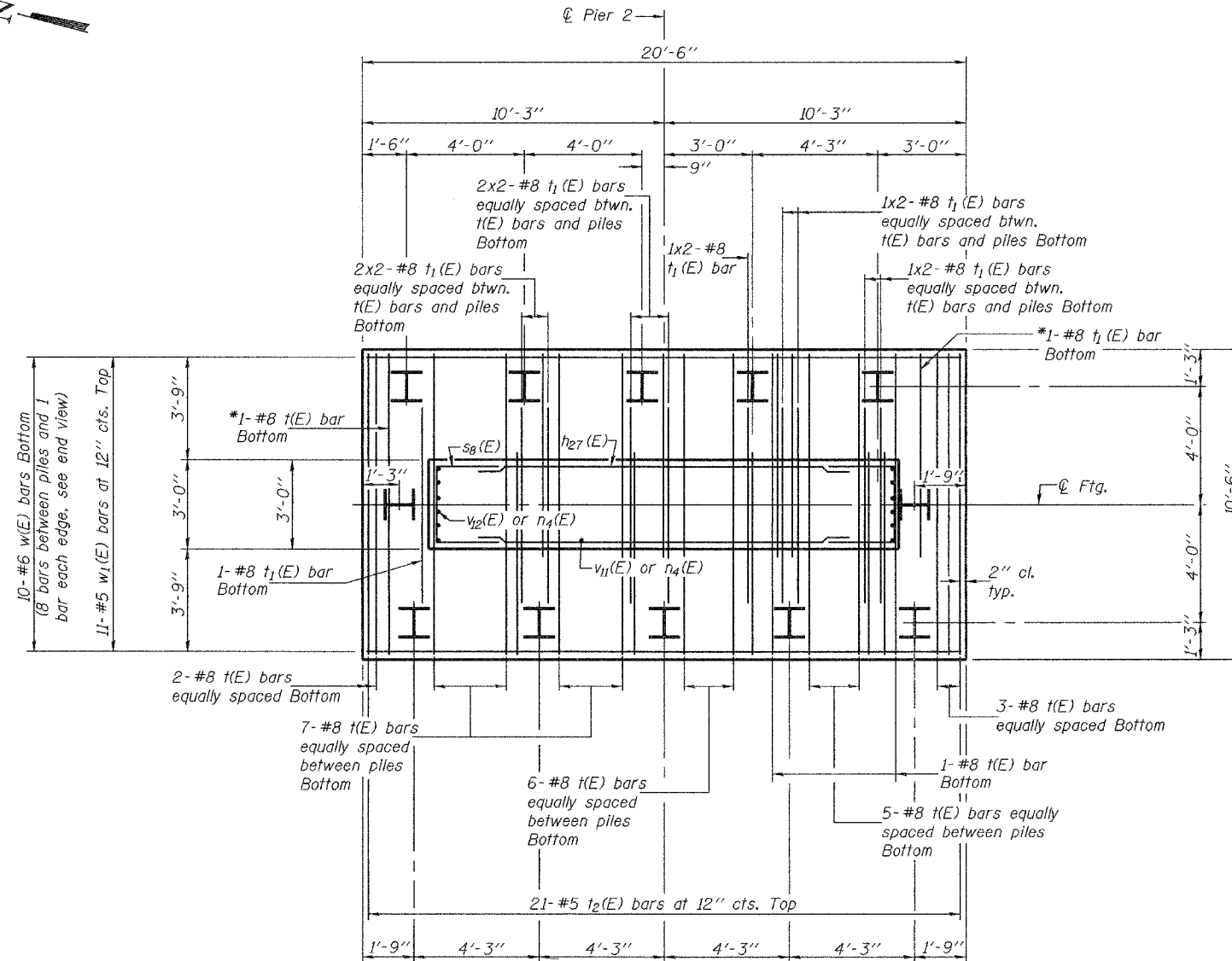
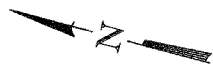


STATE OF ILLINOIS  
DEPARTMENT OF TRANSPORTATION

ROUTE NO.	SECTION	COUNTY	TOTAL SHEETS	SHEET NO.
FAU 7968	*	SANGAMON	261	198
FED. ROAD DIST. NO. 7		ILLINOIS	FED. AID PROJECT-	

Contract #72449 \*SECTION 3R(BR, BR-1, BR-2)19RS-8

MIN. BAR LAP  
#8 bars = 4'-6"



FOOTING PLAN

\*Field drill 1 1/4"  $\phi$  hole in pile for #8 bar

PILE DATA

Type: HP12x74  
Capacity: Refusal  
Est. Length: 68'  
No. Req'd.: 11 + 1 test pile

PIER 2  
BILL OF MATERIAL

Bar	No.	Size	Length	Shape
h27(E)	22	#5	12'-0"	—
h28(E)	8	#5	32'-8"	—
h29(E)	3	#5	26'-11"	—
h30(E)	3	#5	19'-9"	—
h31(E)	3	#5	12'-7"	—
h32(E)	3	#5	5'-5"	—
n4(E)	56	#10	11'-7"	C
p10(E)	10	#11	32'-8"	—
p11(E)	10	#11	16'-2"	—
s3(E)	40	#5	7'-4"	□
s4(E)	24	#5	8'-0"	□
s5(E)	104	#5	8'-10"	□
s6(E)	12	#5	15'-7"	□
s8(E)	22	#5	10'-8"	□
s9(E)	29	#4	8'-8"	□
t(E)	33	#8	10'-2"	—
t1(E)	20	#8	6'-9"	—
t2(E)	21	#5	10'-2"	—
u4(E)	11	#6	7'-8"	—
v11(E)	40	#10	14'-9"	—
v2(E)	12	#10	10'-8"	—
w(E)	10	#6	20'-2"	—
w1(E)	11	#5	20'-2"	—
Structure Excavation	Cu. Yd.	53		
Concrete Structures	Cu. Yd.	61.7		
Reinforcement Bars, Epoxy Coated	Pound	13,440		
Furnishing Steel Piles HP12x74	Foot	748		
Test Pile Steel HP12x74	Each	1		
Driving Steel Piles	Foot	748		

Reinforcement Bars designated (E) shall be epoxy coated.  
Bars indicated thus 2x2-#8 etc. Indicates 2 lines of bars with 2 lengths per line.

DESIGNED	J. Mann
CHECKED	G. Ahanchi
DRAWN	BECKY M. LEACH
CHECKED	JWM/GRA

EXAMINED	December 1, 2005
PASSED	Thomas J. Damagalki ENGINEER OF BRIDGE DESIGN
	Ralph E. Anderson ENGINEER OF BRIDGES AND STRUCTURES

PIER 2 FOOTING PLAN  
F.A.U. ROUTE 7968  
SECTION 3R(BR, BR-1, BR-2)19RS-8  
SANGAMON COUNTY  
STATION 17+97.34  
STRUCTURE NO. 084-0518