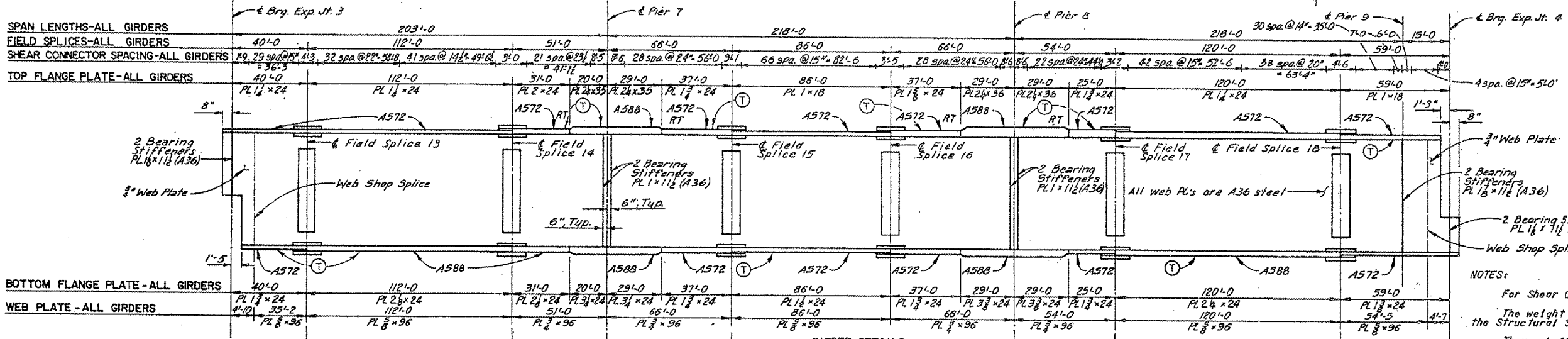
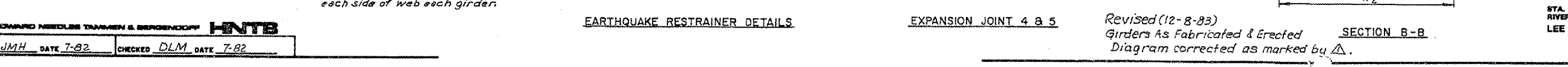
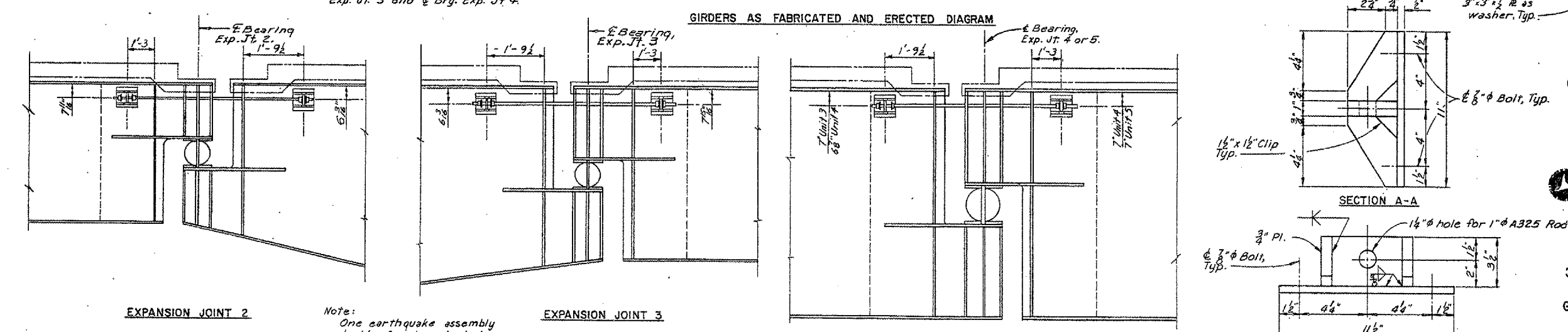
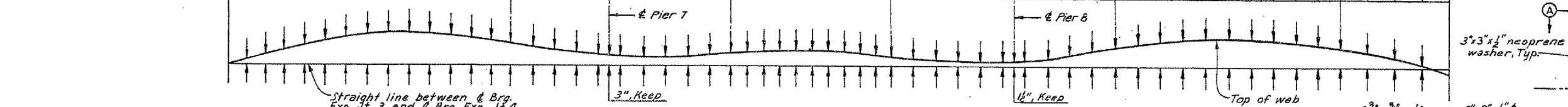
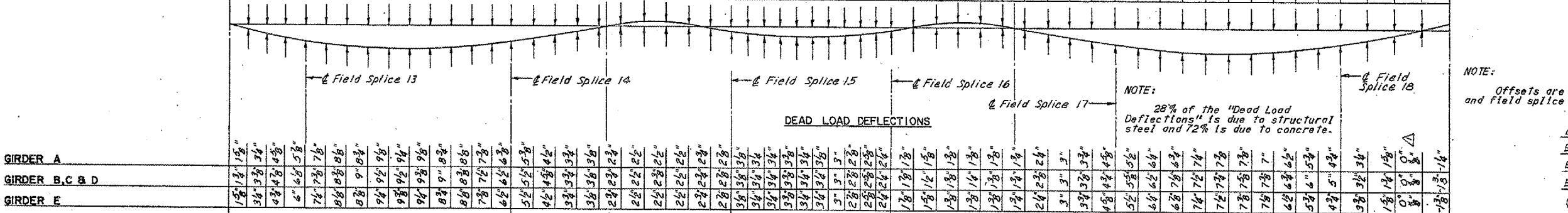


FEDERAL DIST. NO.	STATE	FED. AID PROJ. NO.	FISCAL YEAR	SHEET NO.	TOTAL SHEETS
	IOWA			25	40



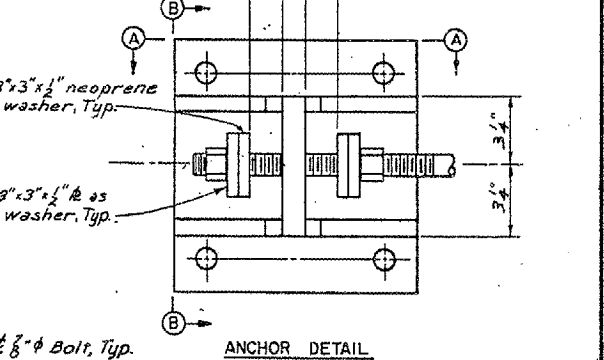
GIRDER	GIRDER DETAILS										
	40'-0"	112'-0"	31'-0"	20'-0"	29'-0"	37'-0"	86'-0"	37'-0"	29'-0"	25'-0"	120'-0"
GIRDER A	1 1/8"	2 1/4"	3 1/2"	4 1/2"	5 1/2"	6 1/2"	7 1/2"	8 1/2"	9 1/2"	10 1/2"	11 1/2"
GIRDER B, C & D	1 1/8"	2 1/4"	3 1/2"	4 1/2"	5 1/2"	6 1/2"	7 1/2"	8 1/2"	9 1/2"	10 1/2"	11 1/2"
GIRDER E	1 1/8"	2 1/4"	3 1/2"	4 1/2"	5 1/2"	6 1/2"	7 1/2"	8 1/2"	9 1/2"	10 1/2"	11 1/2"



NOTES:
 For Shear Connector Detail see Sheet 84
 The weight of shear connectors are included in the Structural Steel Quantities.
 There shall be no shear connector groups located at the E of piers nor at E Brg. Exp. Jt. or field splices.
 For "Field Splice Details" see Sheet 83
 For girder and details see Sheet 88
 ⊕ denotes tension flange plate.

NOTE:
 Offsets are given at 1/4 points between E Brg. Exp. Jt. and field splice and at 1/10 points between field splices.

Exp. Jt. 2	5' 1 1/2" @ 50°F
Exp. Jt. 3	6 1/2" @ 50°F
Exp. Jt. 4	4 1/2" @ 50°F
Exp. Jt. 5	4 1/2" @ 50°F



MISSISSIPPI RIVER BRIDGE
 KEOKUK, IOWA - HAMILTON, ILLINOIS

STEEL ALTERNATE
 DESIGN FOR 0° SKEW
 3340' x 64' CONTINUOUS WELDED PLATE GIRDER BRIDGE
 GIRDER ELEVATION AND DEFLECTIONS
 UNIT 3

STA. 80+40.00
 RIVER MILE 283.8
 LEE COUNTY, IOWA
 PROJECT NO. BR-19-1(3)-38-88
 HANCOCK COUNTY, ILLINOIS

DESIGN NO. 282 LEE COUNTY FILE 28728 SHEET 82 OF 227

8767-25-00

HOWARD NEEDLES TAMMEN & BERGENCOFF
HNTB
 MADE JMH DATE 7-82 CHECKED DLM DATE 7-82

Revised (12-8-83)
 Girders As Fabricated & Erected
 Diagram corrected as marked by Δ.

FOR INFORMATION ONLY