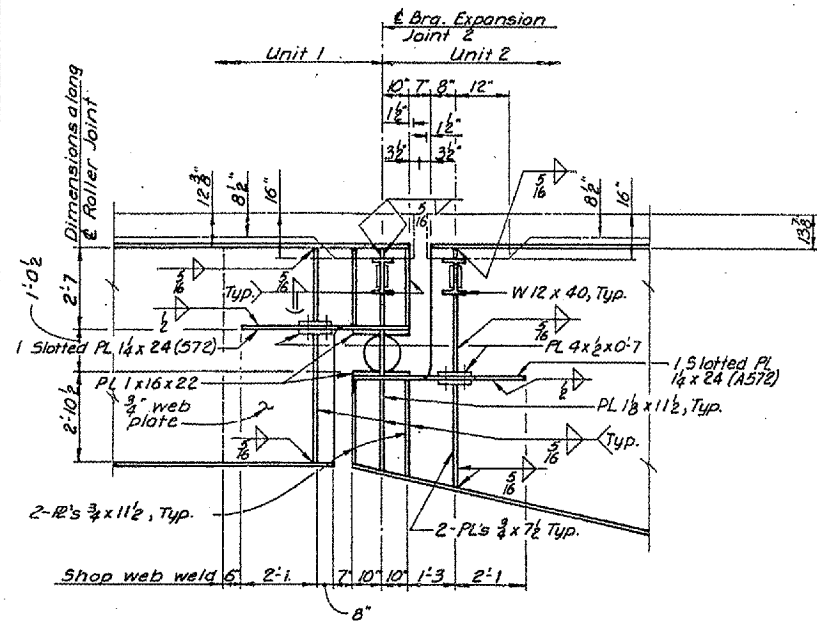
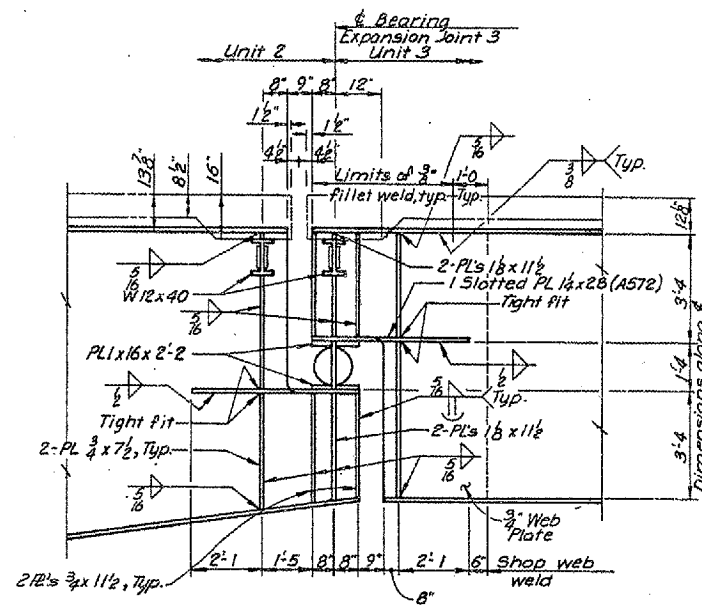


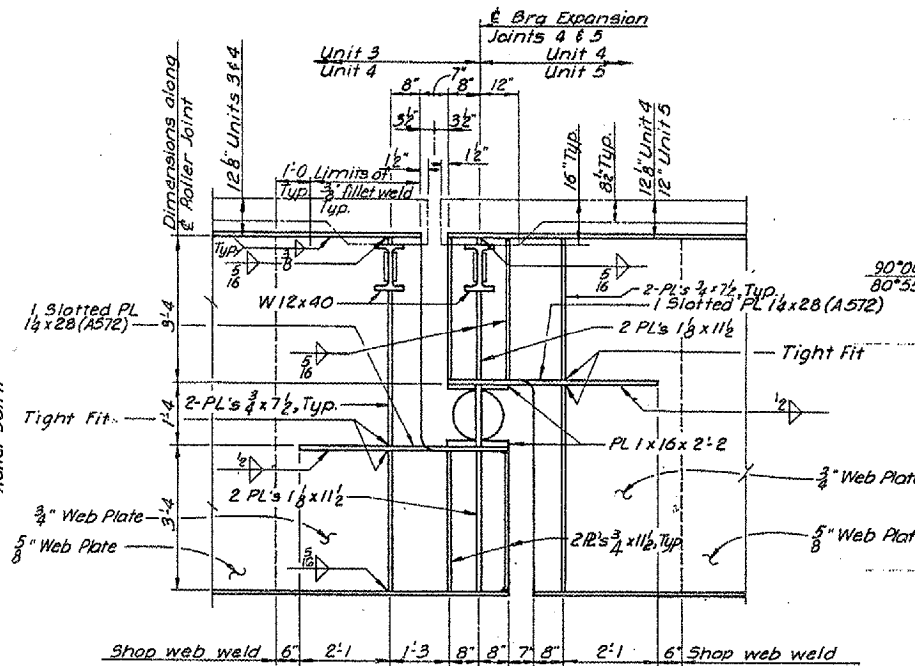
FEDERAL DIST. NO.	STATE	FED. AID PROJ. NO.	FISCAL YEAR	SHEET NO.	TOTAL SHEETS
	IOWA			36	40
	ILLINOIS				



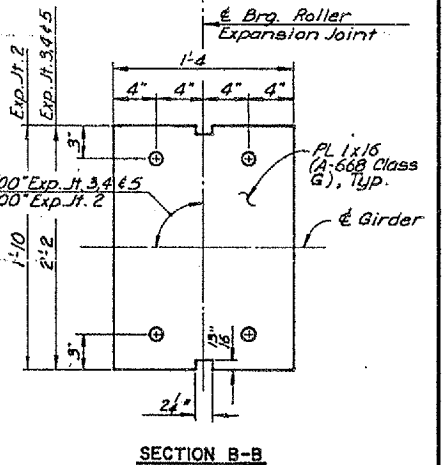
EXPANSION JOINT 2



EXPANSION JOINT 3

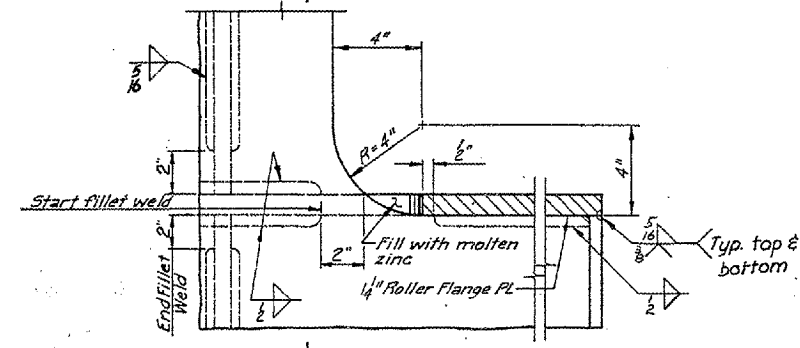


EXPANSION JOINTS 4 & 5

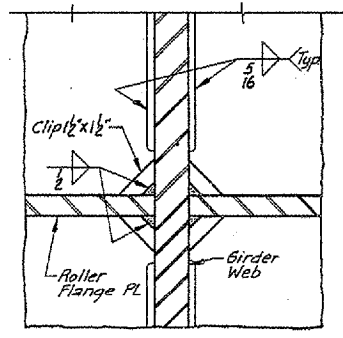


SECTION B-B

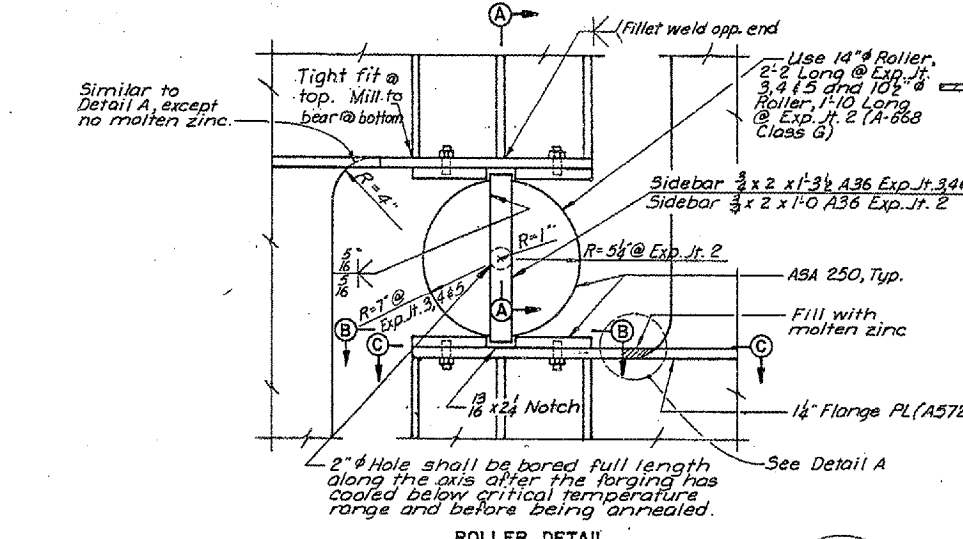
Edges shall be rounded to 1/4\"/>



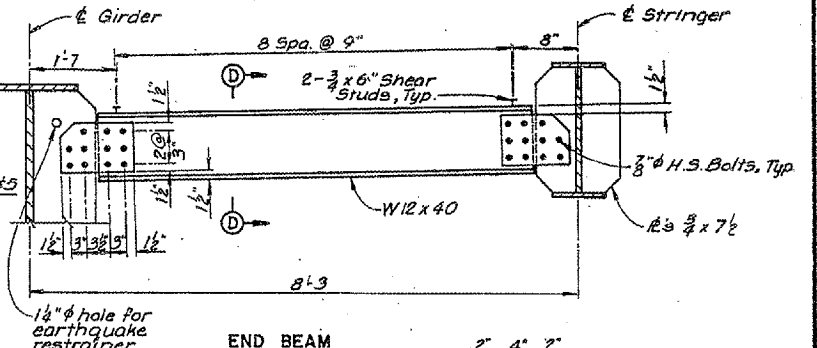
DETAIL A



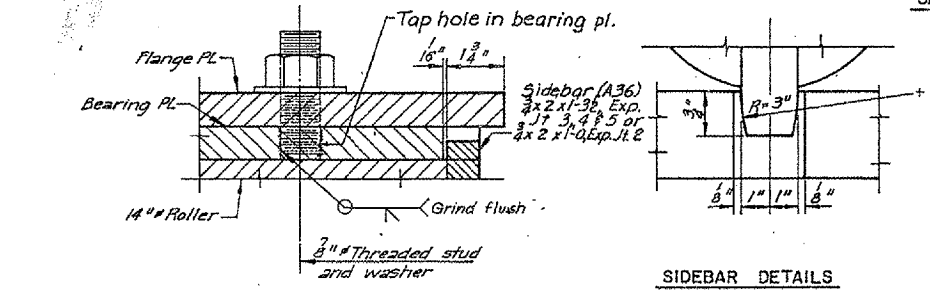
SECTION E-E



ROLLER DETAIL



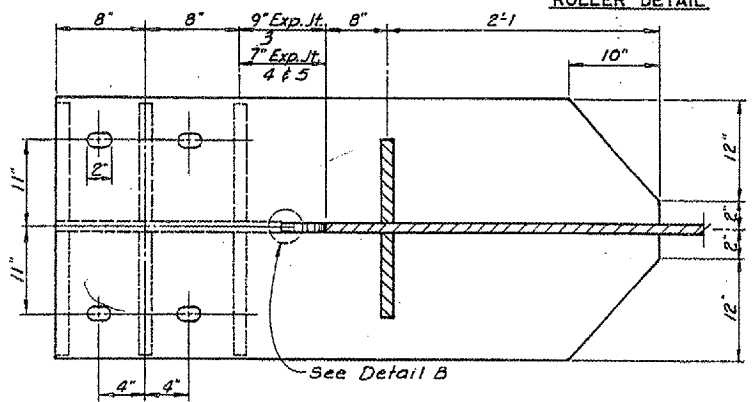
END BEAM



SECTION A-A

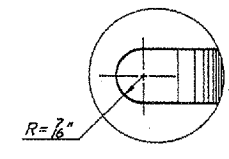
SIDEBAR DETAILS

Note:  
 Roller and Roller Bearing Plate shall be A-568, Class G steel.  
 Steel shall be A36 unless noted otherwise.  
 A-568 steel shall be included in the price bid for \"Structural Steel -- A36.\"



SECTION C-C

(Exp. Jt. 3, 4 & 5. For Exp. Jt. 2, see Sheet 89.)



DETAIL B



MISSISSIPPI RIVER BRIDGE  
 KEOKUK, IOWA - HAMILTON, ILLINOIS

STEEL ALTERNATE  
 DESIGN FOR 0° SKEW  
 3340' x 64' CONTINUOUS WELDED  
 PLATE GIRDER BRIDGE  
 GIRDER EXPANSION JOINTS

STA. 00+40.00  
 RIVER MILE 363.9  
 LEE COUNTY, IOWA

PROJECT NO. BR-19-1(3)-38-08  
 HANCOCK COUNTY, ILLINOIS

6767-25-00

HOWARD NEEDLES TAMMEN & BERGENDOFF **HNTB**  
 MADE TXT DATE 2-18-83 CHECKED DLM DATE 3-83

FOR INFORMATION ONLY