

74078

F.A.P. RTE.	SECTION	COUNTY	TOTAL SHEETS	SHEET NO.
328	5R, Y, RS-1	CLAY	241	1
FED. ROAD DIST. NO. 7		ILLINOIS	FED. AID PROJECT	

STATE OF ILLINOIS  
DEPARTMENT OF TRANSPORTATION  
DIVISION OF HIGHWAYS

# PLANS FOR PROPOSED FEDERAL HIGHWAY PROJECT

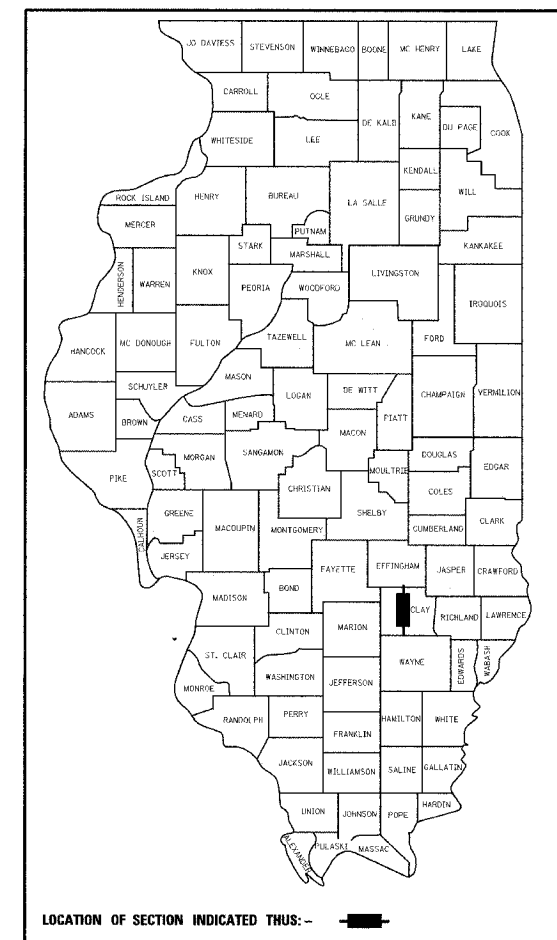
FAP 328 (US 45)  
SECTION 5R, Y, RS-1  
PROJECT NO. F-328(017)

PAVEMENT RECONSTRUCTION & RESURFACING  
CLAY COUNTY

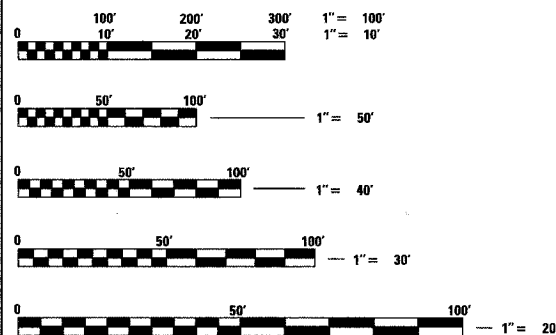
C-97-002-05

FOR INDEX OF SHEETS  
SEE SHEET 2

2005 ADT = 3150  
2005 MAX 8HR VOL = 2376  
DESIGN DESIGNATION - 607 (22) RUR PRIN ART 3.81 (FD-20)



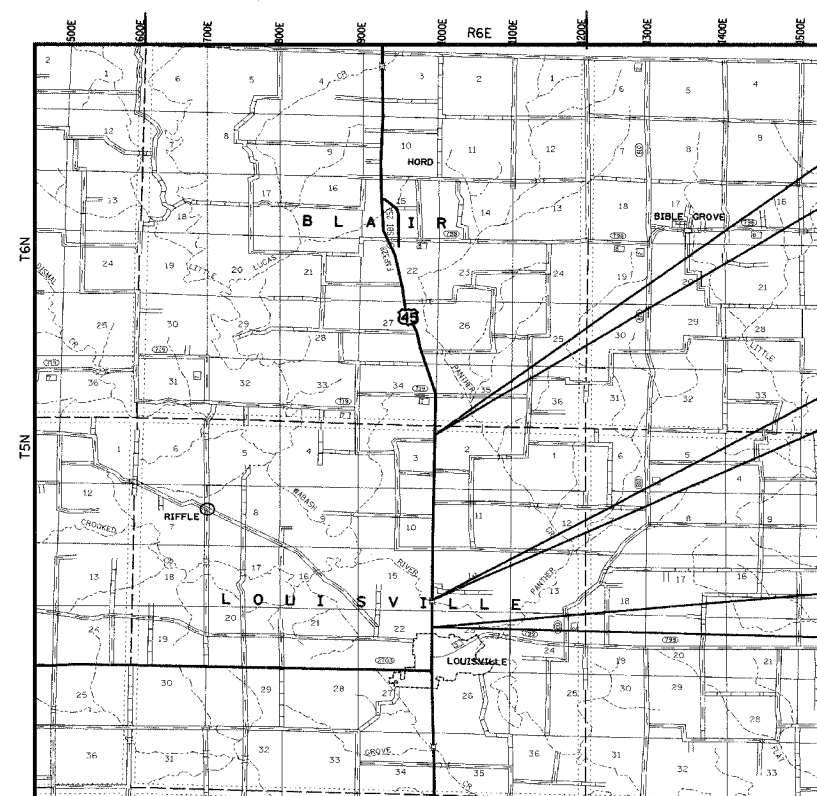
SCALES  
PLAN: 1" = 50'  
PROFILE HORIZ. 1" = 50'  
PROFILE VERT. 1" = 5'  
CROSS SECTIONS HORIZ. 1" = 10', VERT. 1" = 5'



FULL SIZE PLANS HAVE BEEN PREPARED USING STANDARD ENGINEERING SCALES. REDUCED SIZED PLANS WILL NOT CONFORM TO STANDARD SCALES. IN MAKING MEASUREMENTS ON REDUCED PLANS, THE ABOVE SCALES MAY BE USED.

J.U.L.I.E.  
JOINT UTILITY LOCATION INFORMATION FOR EXCAVATION  
1-800-892-0123

CONTRACT NO. 74078



LOCATION MAP  
BLAIR TWP  
LOUISVILLE TWP  
APPROX SCALE (MILES)

TOTAL LENGTH OF PROJECT = 16,850 FEET = 3.191 MILES  
PAVING OMISSION = 735.67 FEET = 0.139 MILES  
NET LENGTH (PAVING) = 16,114.33 FEET = 3.052 MILES

BEGIN CONSTRUCTION  
STA. 1143 + 00.00

BRIDGE S.N. 013-0010  
STA. 1277 + 47.11  
STA. 1284 + 82.78

PAVING OMISSION

END CONSTRUCTION  
STA. 1311 + 50.00

STATE OF ILLINOIS  
DEPARTMENT OF TRANSPORTATION  
DIVISION OF HIGHWAYS

SUBMITTED Oct 27 20 05  
*Clinton M. Roscoe*  
DEPUTY DIRECTOR OF HIGHWAYS  
REGION FOUR ENGINEER

20

ENGINEER OF PROJECT DEVELOPMENT AND IMPLEMENTATION  
December 9, 20 05  
*Mike Hine*  
ENGINEER OF DESIGN AND ENVIRONMENT

December 9, 20 05  
*Eric Haral*  
DEPUTY DIRECTOR, DIVISION OF HIGHWAYS

20

FHWA DIVISION ADMINISTRATOR



*Mark A. Reitz*  
MARK A. REITZ P.E. #062-047531 DATE 10-25-05  
LICENSE EXPIRES: 11-30-07  
HURST-ROSCHKE ENGINEERS, INC.