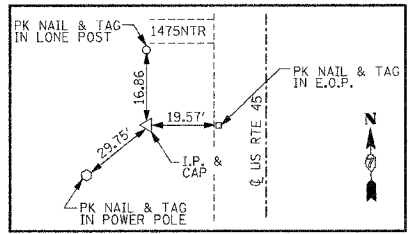
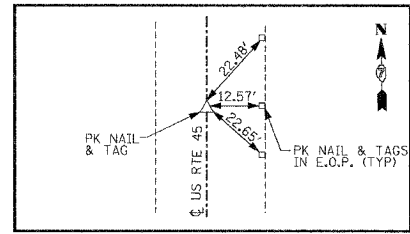


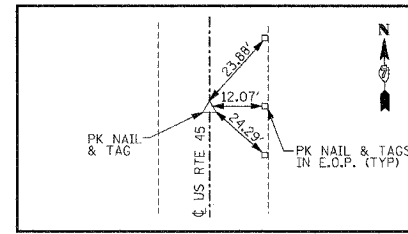
F.A.P. RTE.	SECTION	COUNTY	TOTAL SHEETS	SHEET NO.
328	SR, Y, RS-1	CLAY	242	19
STA.		TO STA.		
FED. ROAD DIST. NO. 7 ILLINOIS FED. AID PROJECT				
CONTRACT NO. 74078				



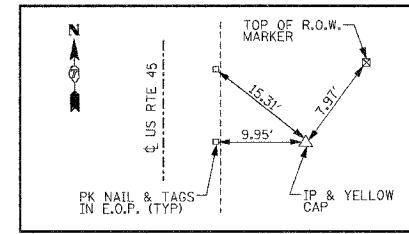
T.P. #34 STA 1144+40.64



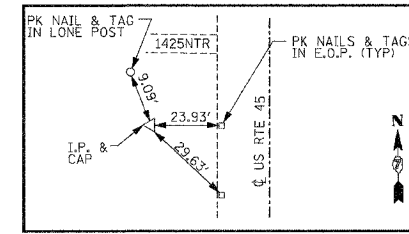
PI STA 1152+03.23



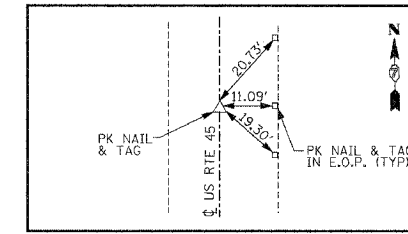
PI STA 1157+96.67



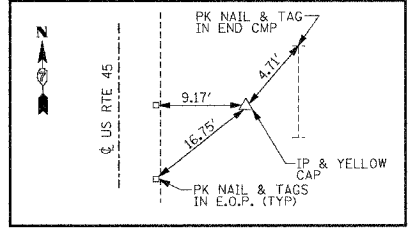
T.P. #33 STA 1159+03.69



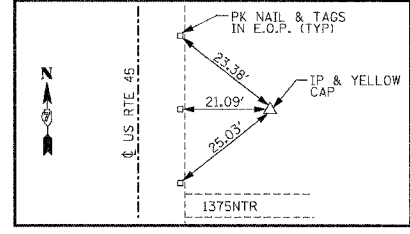
T.P. #32 STA 1170+40.32



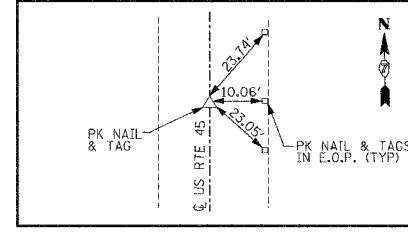
POT STA 1177+54.54



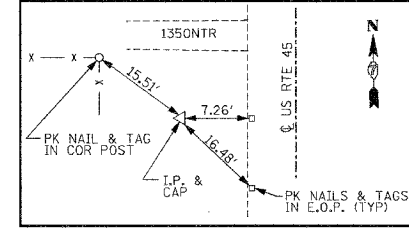
T.P. #31 STA 1183+95.64



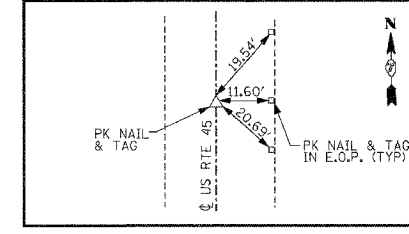
T.P. #30 STA 1196+62.93



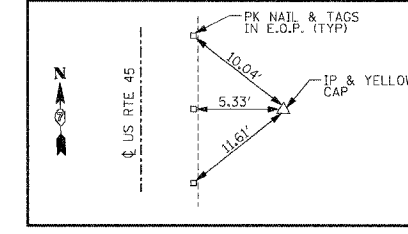
PI STA 1197+96.67



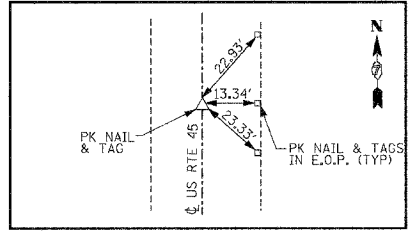
T.P. #29 STA 1210+81.79



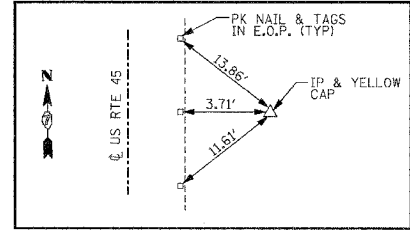
PI STA 1214+00.20



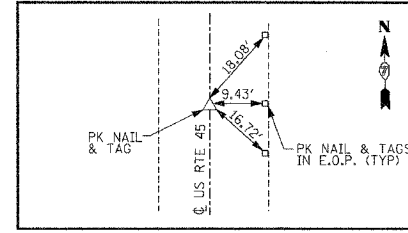
T.P. #28 STA 1230+01.48



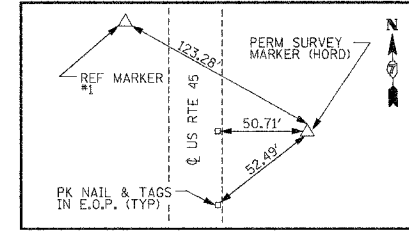
PI STA 1235+00.15



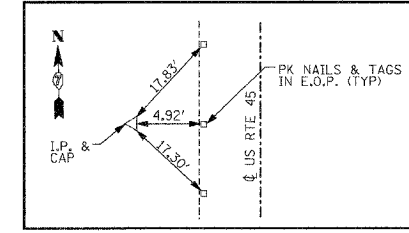
T.P. #26 STA 1253+76.68



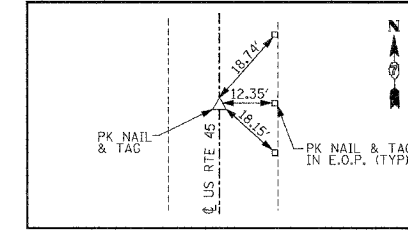
PI STA 1256+00.15



T.P. #50 STA 1277+13.66



T.P. #25 STA 1287+86.47



PI STA 1288+99.99

REVISIONS	
NAME	DATE

ILLINOIS DEPARTMENT OF TRANSPORTATION
**REFERENCE TIES
 TRAVERSE STATIONS
 US RTE 45**
 SCALE: NO SCALE
 DATE: 10-21-05
 DRAWN BY: UJ
 CHECKED BY: MAR

... 10/25/2005 10:56:24 AM