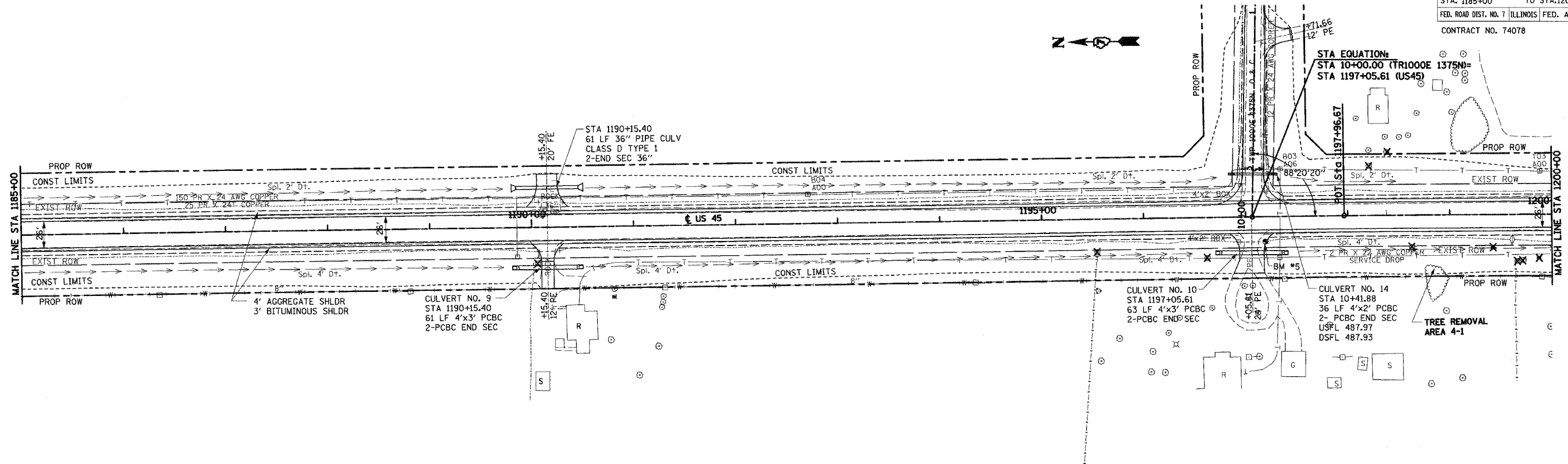


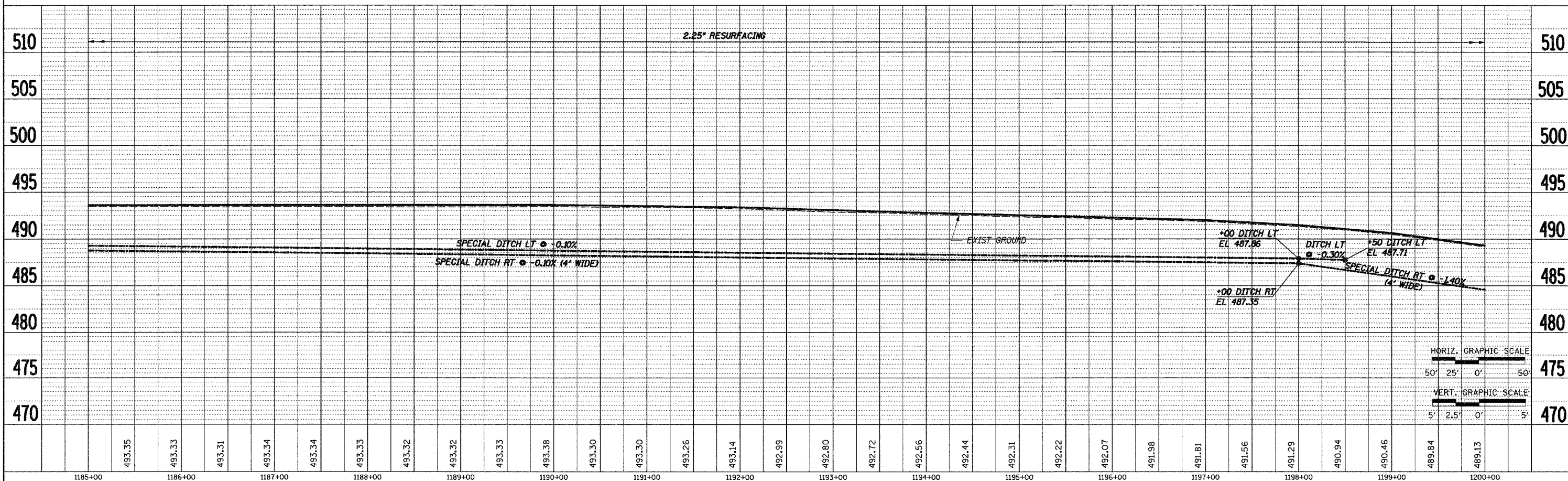
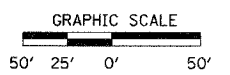
F.A.P. RTE.	SECTION	COUNTY	TOTAL SHEETS	SHEET NO.
328	5R, Y, RS-1	CLAY	242	36
STA. 1185+00		TO STA. 1200+00		
FED. ROAD DIST. NO. 7 (ILLINOIS)		FED. AID PROJECT		
CONTRACT NO. 74078				

DATE	BY	DATE

DATE	BY	DATE



BM #5 STA 1197+19.00, 24.00' RT.
 CHISELED "SQ" SOUTH END
 RC BOX P.E EL 491.01



STA 1185+00 TO STA 1200+00

I:\Projects\74078\Drawings\74078-5R\74078-5R-36.dwg