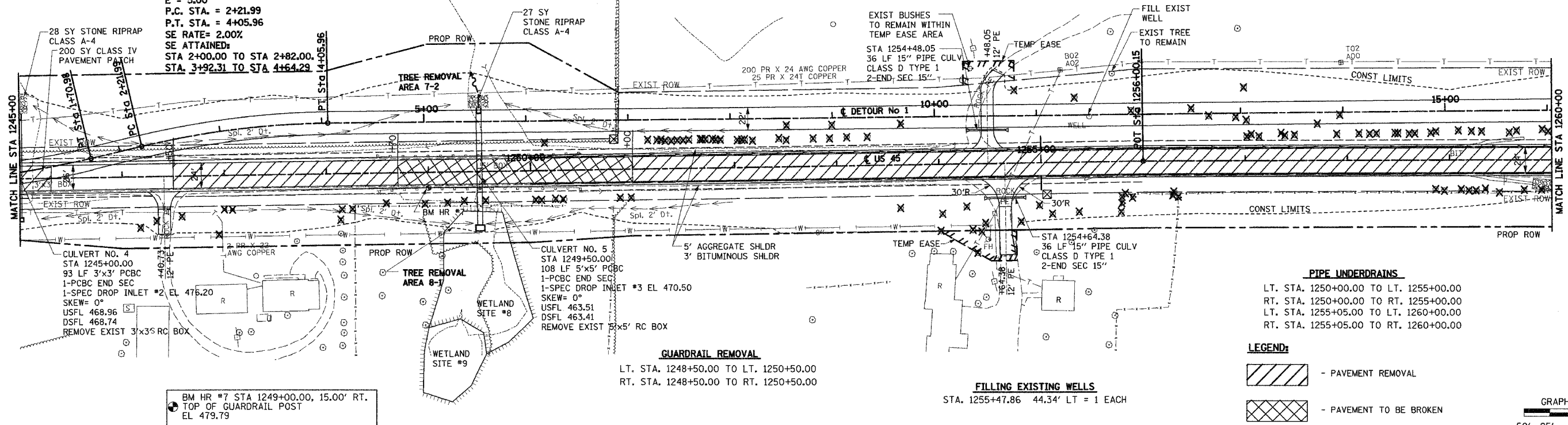


F.A.P. RTE.	SECTION	COUNTY	TOTAL SHEETS	SHEET NO.
328	5R, Y, RS-1	CLAY	242	40
STA. 1245+00		TO STA. 1260+00		
FED. ROAD DIST. NO. 7 ILLINOIS FED. AID PROJECT				
CONTRACT NO. 74078				

CULVERT No. 4 STA 1245+00		DR AREA = 8 AC		LOW GRADE ELEV = 481.40 @ STA 1245+00	
FLOOD YR	Q (CFS)	OPENING (SF)	EXIST	PROP	HEADWATER EL
DESIGN	50	23	9	9	478.31
BASE	100	27	9	9	478.53
OVERTOPPING	---	---	---	---	---
MAX CALC	500	35	9	9	478.99

CULVERT No. 5 STA 1249+50		DR AREA = 17 AC		LOW GRADE ELEV = 481.40 @ STA 1249+50	
FLOOD YR	Q (CFS)	OPENING (SF)	EXIST	PROP	HEADWATER EL
DESIGN	50	59	25	25	472.44
BASE	100	69	25	25	472.72
OVERTOPPING	---	---	---	---	---
MAX CALC	500	92	25	25	473.36

DETOUR 1
 PI Sta. 3+14.34
 $\Delta = 12^\circ 24' 03''$ (RT)
 $D = 6^\circ 44' 26''$
 $R = 850.00'$
 $T = 92.35'$
 $L = 183.97'$
 $E = 5.00'$
 P.C. STA. = 2+21.99
 P.T. STA. = 4+05.96
 SE RATE = 2.00%
 SE ATTAINED:
 STA 2+00.00 TO STA 2+82.00.
 STA 3+92.31 TO STA 4+64.29



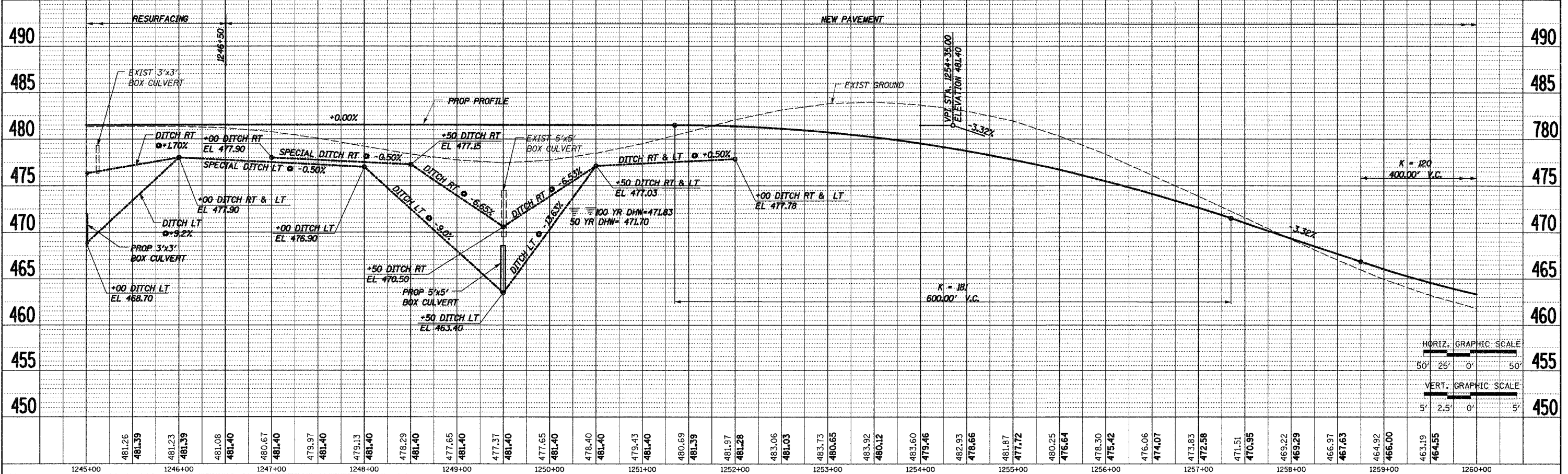
PIPE UNDERDRAINS
 LT. STA. 1250+00.00 TO LT. 1255+00.00
 RT. STA. 1250+00.00 TO RT. 1255+00.00
 LT. STA. 1255+05.00 TO LT. 1260+00.00
 RT. STA. 1255+05.00 TO RT. 1260+00.00

LEGEND:
 - PAVEMENT REMOVAL
 - PAVEMENT TO BE BROKEN
GRAPHIC SCALE
 50' 25' 0' 50'

GUARDRAIL REMOVAL
 LT. STA. 1248+50.00 TO LT. 1250+50.00
 RT. STA. 1248+50.00 TO RT. 1250+50.00

FILLING EXISTING WELLS
 STA. 1255+47.86 44.34' LT = 1 EACH

BM HR #7 STA 1249+00.00, 15.00' RT.
 TOP OF GUARDRAIL POST
 EL 479.79



HORIZ. GRAPHIC SCALE
 50' 25' 0' 50'
VERT. GRAPHIC SCALE
 5' 2.5' 0' 5'

STA 1245+00 TO STA 1260+00

DATE	BY	DATE	BY

PLANNING
 SURVEYED
 ALIGNED
 CHECKED
 RT. OF WAY
 CHECKED
 NOTE BOOK
 NO.

DATE	BY	DATE	BY

PROFILE
 SURVEYED
 GRADES
 CHECKED
 ELEV. NOTED
 STRUCTURE
 NOTATIONS
 COR'D
 NOTE BOOK
 NO.

11/25/2005 10:55:36 AM