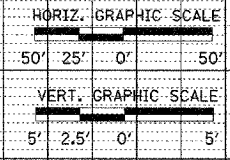
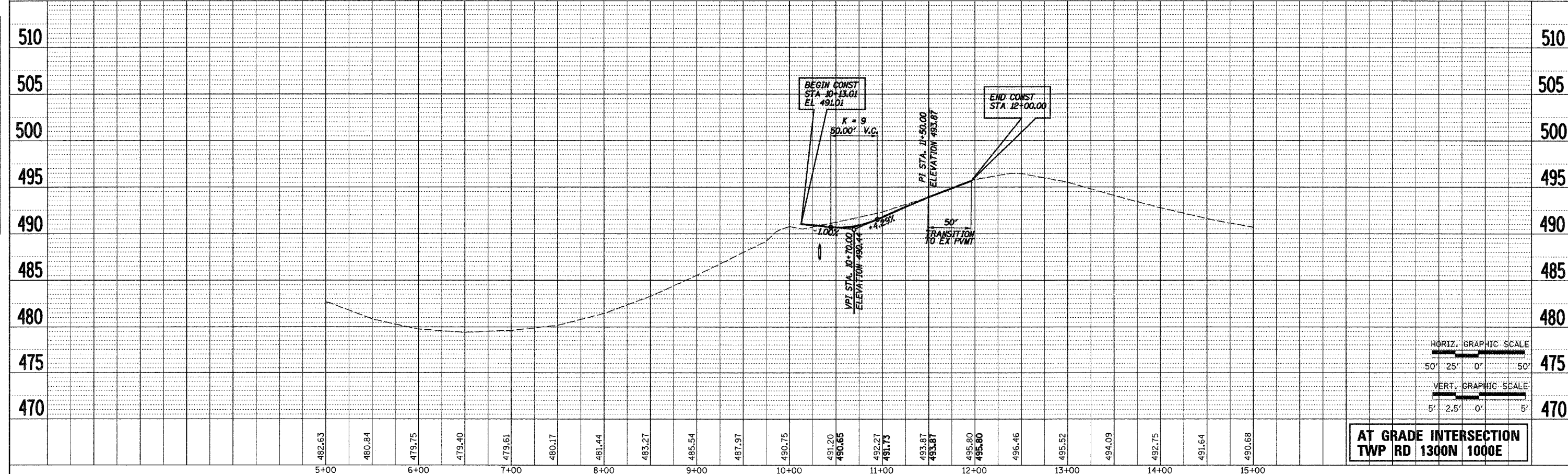
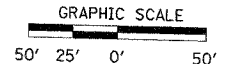
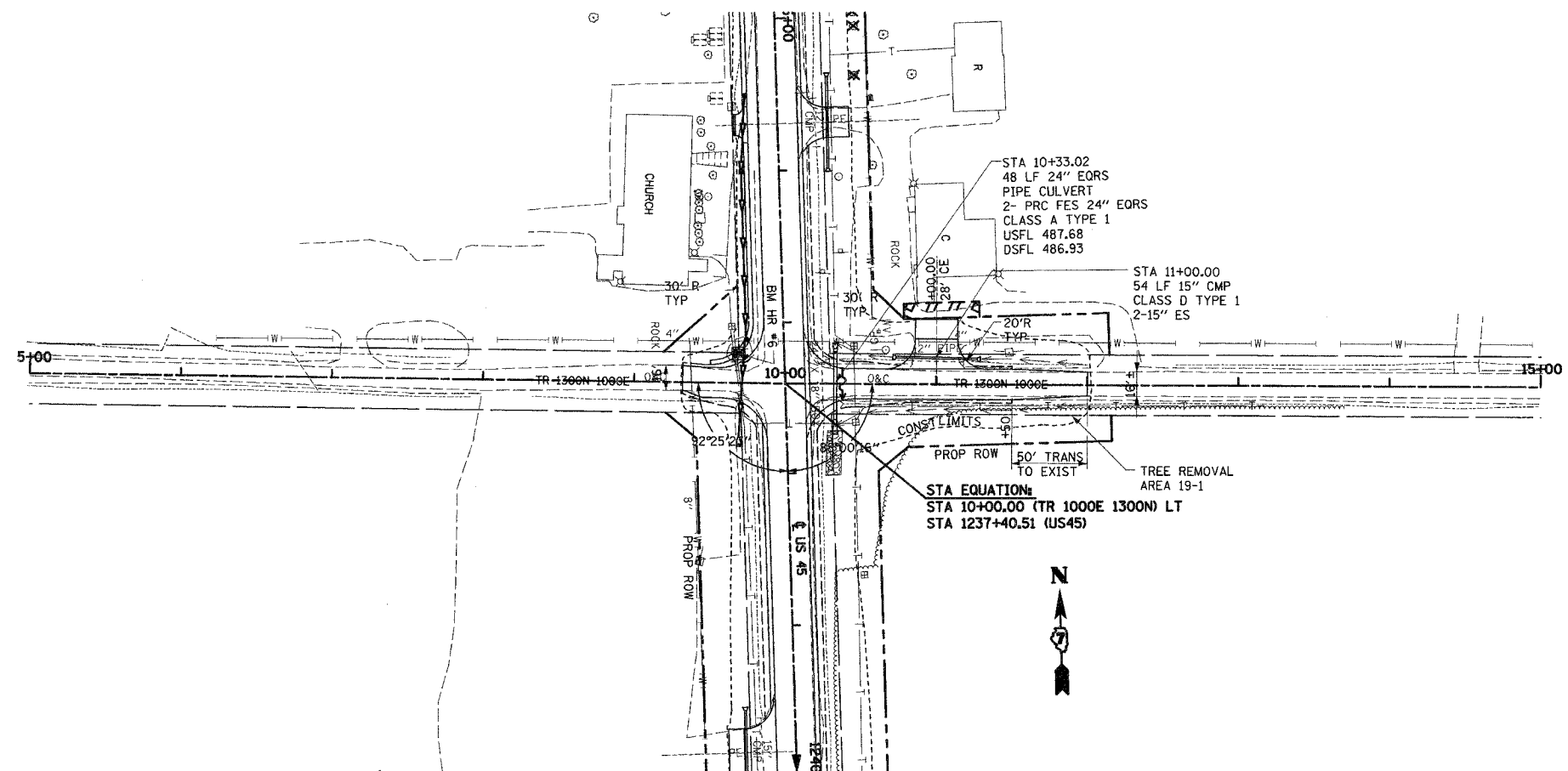


F.A.P. RTE.	SECTION	COUNTY	TOTAL SHEETS	SHEET NO.
328	5R, Y, RS-1	CLAY	242	46
STA. TO STA.		FED. ROAD DIST. NO. 7 (ILLINOIS) FED. AID PROJECT		

PLAN	DATE
SURVEYED	BY
ALIGNMENT CHECKED	DATE
FIELD DATA CHECKED	
FILE NAME	

PROFILE	DATE
SURVEYED	BY
GRADES CHECKED	DATE
NOTED	
PLACEMENT NOTATIONS	



**AT GRADE INTERSECTION
TWP RD 1300N 1000E**

T.R. 1000E 1300N

... \usr\proj\p1000e1300n\1000e1300n.dgn 11/07/2006 11:07:28 AM