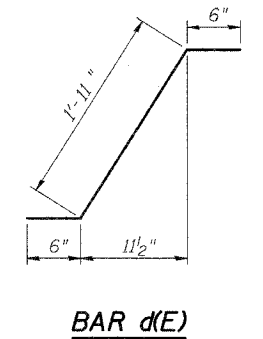
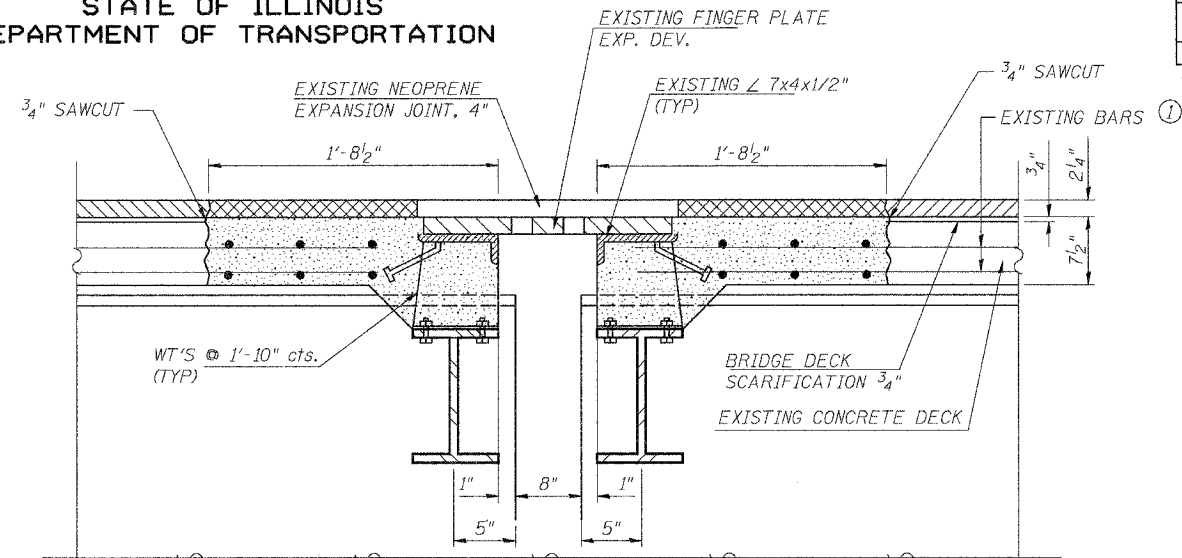


STATE OF ILLINOIS
DEPARTMENT OF TRANSPORTATION

ROUTE NO.	SECTION	COUNTY	TOTAL SHEETS	SHEET NO.
F.A.P. 328	5BR,RS-1	CLAY	242	67
FED. ROAD DIST. NO. 7		ILLINOIS	FED. AID PROJECT-	
CONTRACT NO. T4078				

BAR LIST - PIER 4 & 8 (QUANTITIES SHOWN FOR ONE PIER)						
BARS	NUMBER OF BARS		TOTAL (EA. PIER)	SIZE	LENGTH FOOT	SHAPE
	STAGE I	STAGE 2				
a(E)	16		16	#5	16'-8"	—
a1(E)		16	16	#5	18'-8"	—
d(E)	6	6	12	#5	2'-11"	┘
d1(E)	6	6	12	#4	4'-2"	┘
d2(E)	12	12	24	#5	2'-5"	┘
x(E)	34	38	72	#5	2'-3"	┘

BILL OF MATERIAL - PIER 4 & 8 - SN 013-0010 (QUANTITIES SHOWN FOR ONE PIER)				
ITEM	UNIT	STAGE I	STAGE II	TOTAL (EA. PIER)
CONCRETE REMOVAL	CU YD	2.6	2.6	5.2
NEOPRENE EXPANSION JOINT, 4"	FOOT	16.25	18.25	34.5
CONCRETE SUPERSTRUCTURE	CU YD	2.9	3.2	6.1
REINFORCEMENT BARS (EPOXY COATED)	POUND	424	466	890
BAR SPLICERS	EACH	16	---	16



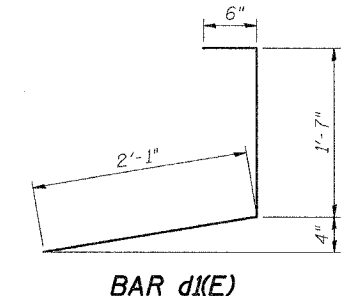
EXISTING PIER 4 & 8
SECTION A-A

REMOVE EXISTING FINGER PLATE EXPANSION DEVICE ENTIRE WIDTH OF DECK
REMOVAL OF EXISTING NEOPRENE EXPANSION JOINT AND STEEL INCLUDING
ANGLES AND STOOLS SHALL BE INCLUDED IN THE COST OF CONCRETE REMOVAL.

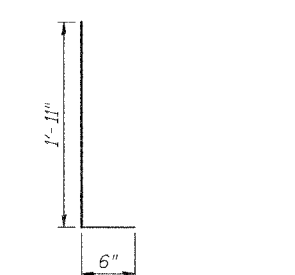
① EXISTING REINFORCEMENT BARS SHALL
BE CLEANED, STRAIGHTENED AND INCORPORATED INTO
THE NEW CONCRETE

- CONCRETE REMOVAL
- BITUMINOUS CONCRETE REMOVAL
- BITUMINOUS CONCRETE REMOVAL TO
BE PAID FOR AS CONCRETE REMOVAL

DURING CONCRETE REMOVAL IT WILL BE NECESSARY TO REMOVE A PORTION OF THE ALUMINUM RAIL AND SOME RAIL
POSTS. THE ANCHORAGE DEVICES AND BOLTS FOR THE RAIL POSTS SHALL BE SALVAGED FOR REINSTALLATION.
AFTER REINSTALLATION, THE BASE OF THE POSTS SHALL BE SEALED WITH A TWO COMPONENT NON-STAINING GRAY
SEALING COMPOUND WITH POLYSULFIDE LIQUID POLYMERS-GUN GRADE WITH PRIMER. COST OF REMOVAL AND
REINSTALLATION OF RAILING IS INCLUDED WITH CONCRETE REMOVAL.



BAR d1(E)

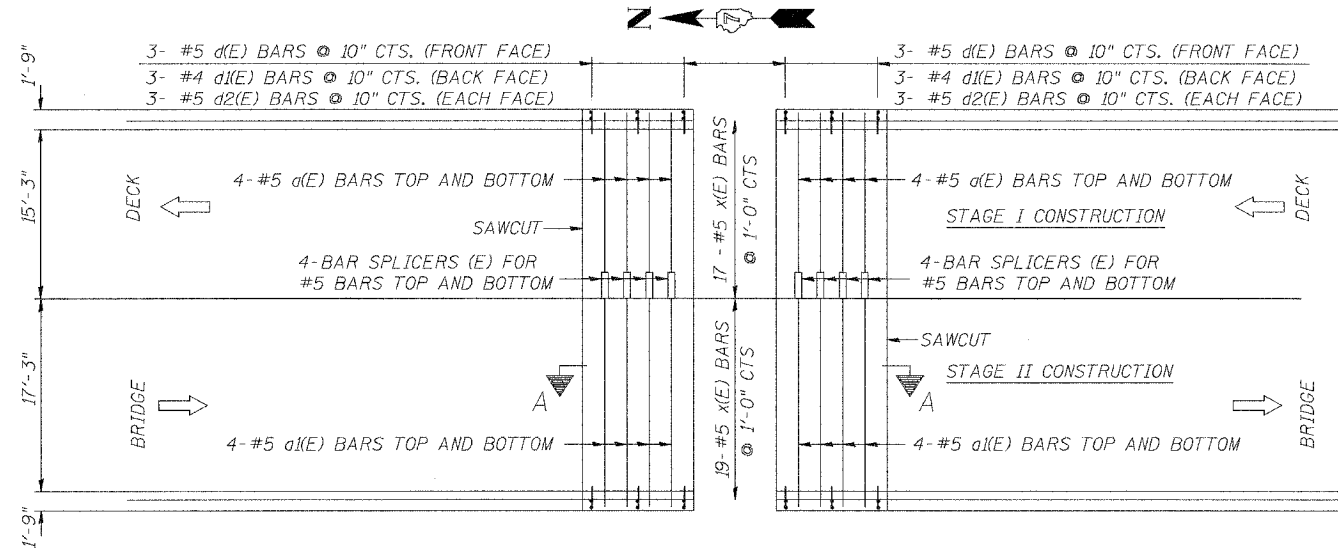


BAR d2(E)

BAR x(E)

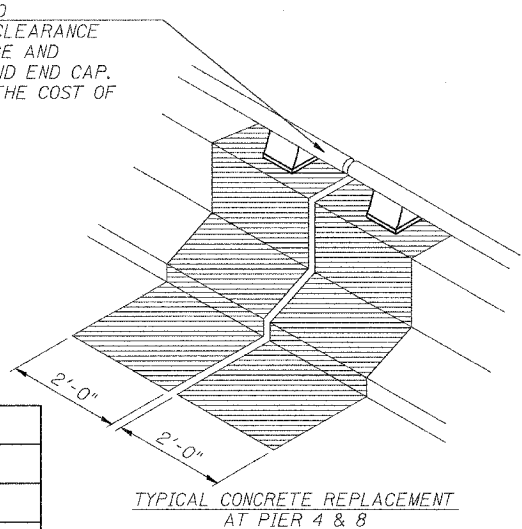
For Bar Splicer details see sheet 10 of 17
For Neoprene Expansion Joint details see sheet 13 of 17

EXPANSION JOINT DETAILS
PIER 4 & 8
FAP 328 - SECTION 5BR-2
OVER LITTLE WABASH RIVER
CLAY COUNTY
STATION 1281+15
STRUCTURE NO. 013-0010

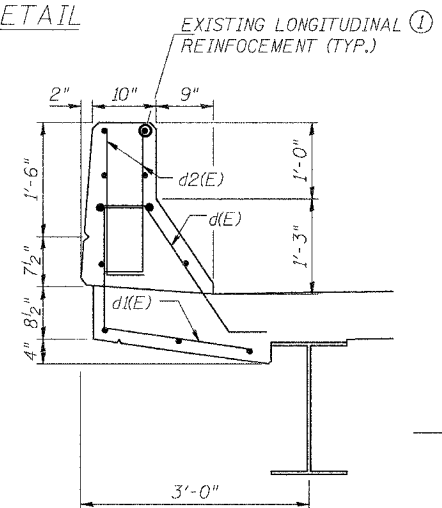


REINFORCEMENT DETAIL
PIER 4 & 8

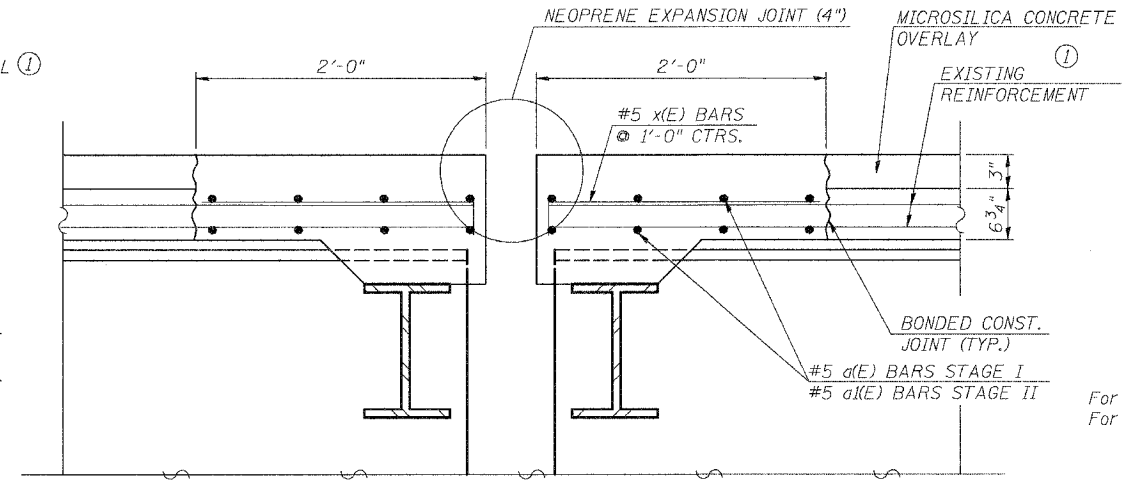
SAW END OF HANDRAIL TO
ALLOW A MINIMUM OF 2" CLEARANCE
FROM END POST. SALVAGE AND
REINSTALL RAIL POST AND END CAP.
(SHALL BE INCLUDED IN THE COST OF
CONCRETE REMOVAL)



TYPICAL CONCRETE REPLACEMENT
AT PIER 4 & 8



PARAPET DETAIL



PROPOSED PIER 4 & 8
SECTION A-A

DESIGNED	B.W.P.
CHECKED	R.P.B.
DRAWN	D.J.S.
CHECKED	R.P.B.