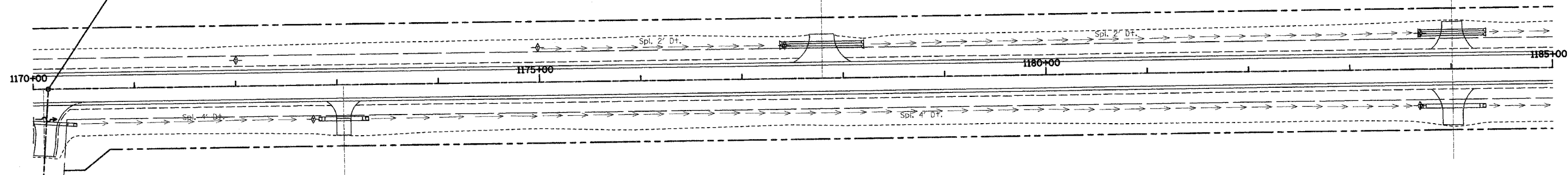


F.A.P. RTE.	SECTION	COUNTY	TOTAL SHEETS	SHEET NO.
328	5R, Y, RS-1	CLAY	242	81.
STA.		TO STA.		
FED. ROAD DIST. NO.		ILLINOIS	FED. AID PROJECT	
CONTRACT NO. 74078				



STA EQUATION:
 STA 10+00.00 (TR1000E 1425N)=
 STA 1170+15.11 (US45)

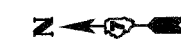


LEGEND

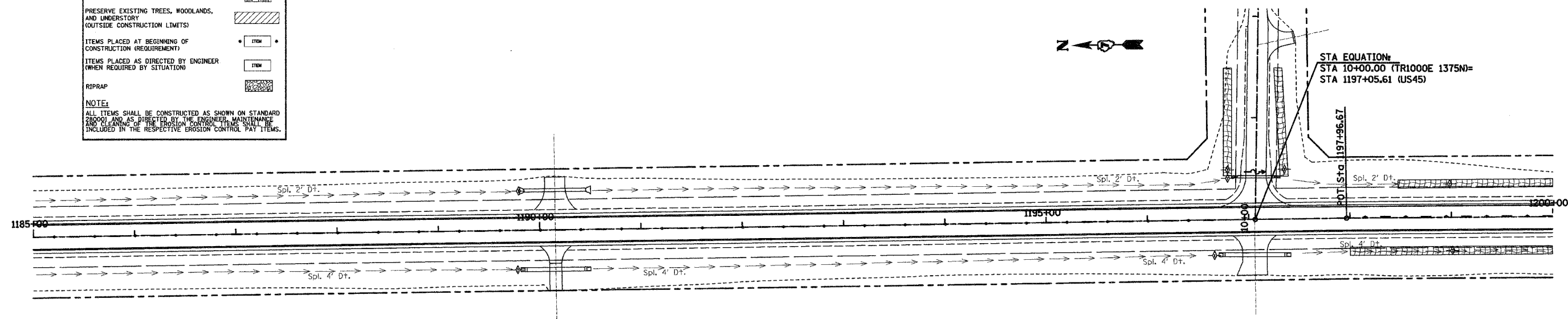
ITEM	SYMBOL
TEMPORARY DITCH CHECKS	
TEMPORARY DITCH CHECKS	
TEMPORARY SILT FENCE	
PERIMETER EROSION BARRIER SILT FENCE	
EROSION CONTROL BLANKET	
PRESERVE EXISTING TREES, WOODLANDS, AND UNDERSTORY (OUTSIDE CONSTRUCTION LIMITS)	
ITEMS PLACED AT BEGINNING OF CONSTRUCTION (REQUIREMENT)	
ITEMS PLACED AS DIRECTED BY ENGINEER (WHEN REQUIRED BY SITUATION)	
RIPRAP	

NOTE:
 ALL ITEMS SHALL BE CONSTRUCTED AS SHOWN ON STANDARD 280001 AND AS DIRECTED BY THE ENGINEER. MAINTENANCE AND CLEANING OF THE EROSION CONTROL ITEMS SHALL BE INCLUDED IN THE RESPECTIVE EROSION CONTROL PAY ITEMS.

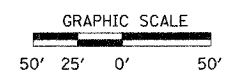
FAP RTE 328 (US45)



STA EQUATION:
 STA 10+00.00 (TR1000E 1375N)=
 STA 1197+05.61 (US45)



FAP RTE 328 (US45)



REVISIONS	
NAME	DATE

ILLINOIS DEPARTMENT OF TRANSPORTATION

EROSION CONTROL PLAN

SCALE: VERT.
 HORIZ.
 DATE: 10-21-05

DRAWN BY: UJ
 CHECKED BY: MAR

\\sawtooth\project\328\temp\328_08.dwg 10/25/2005 10:57:30 AM