

F.A.I. RTE.	SECTION	COUNTY	TOTAL SHEETS	SHEET NO.
64	97-3B-I-2	WHITE	15	1

D-97-015-06

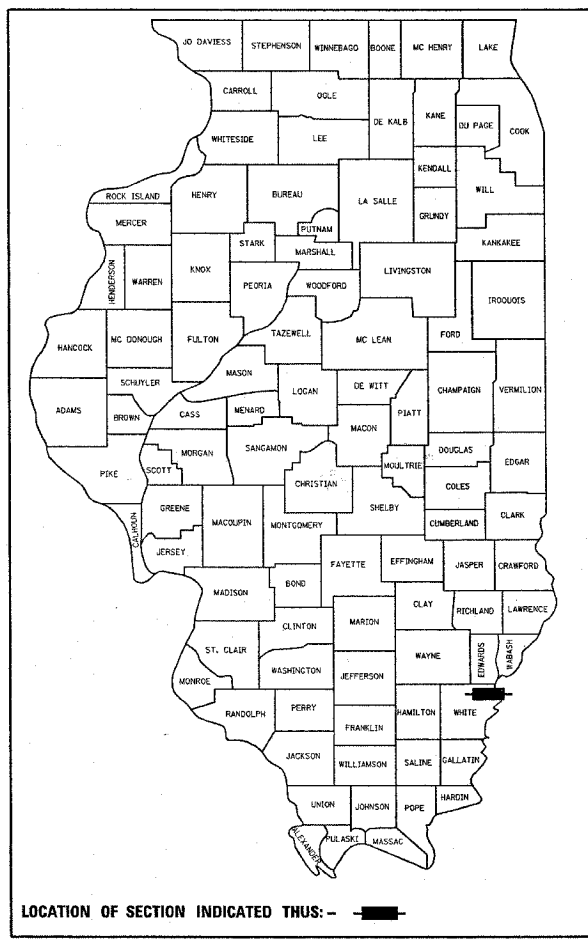
STATE OF ILLINOIS  
DEPARTMENT OF TRANSPORTATION  
DIVISION OF HIGHWAYS

**PROPOSED  
HIGHWAY PLANS**

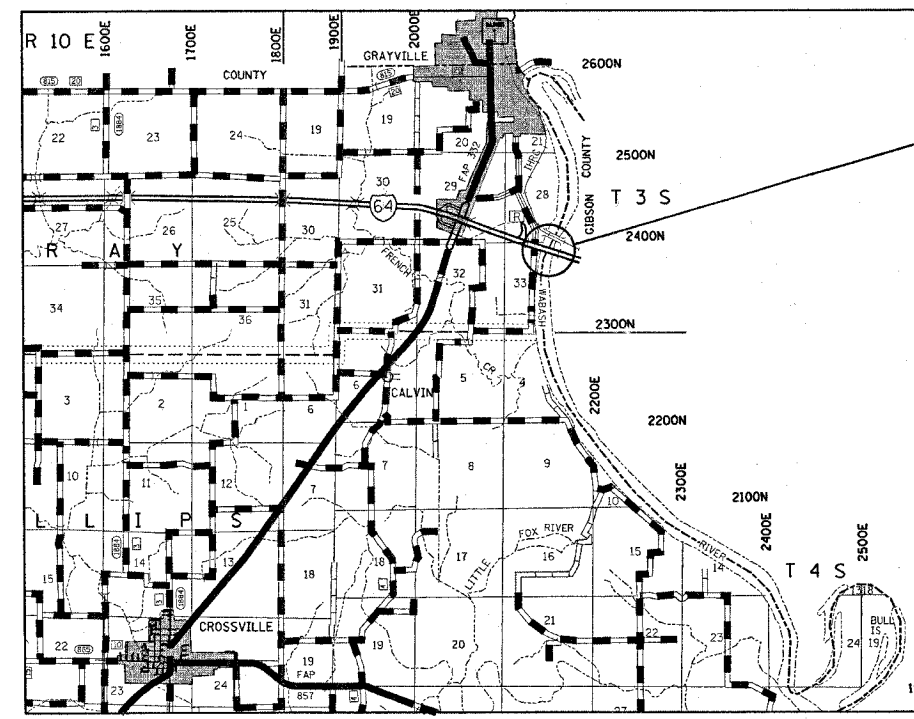
FAI ROUTE 64 (I-64)  
SCOUR MITIGATION  
WHITE COUNTY, ILLINOIS  
POSEY COUNTY, INDIANA

**C-97-035-06** 

SECTION 97-3B-I-2

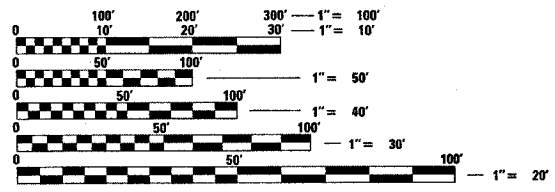


FOR INDEX OF SHEETS, SEE SHEET NO. 2



SN 097-0003  
SN 097-0004  
WABASH RIVER

LOCATION MAP



FULL SIZE PLANS HAVE BEEN PREPARED USING STANDARD ENGINEERING SCALES. REDUCED SIZED PLANS WILL NOT CONFORM TO STANDARD SCALES. IN MAKING MEASUREMENTS ON REDUCED PLANS, THE ABOVE SCALES MAY BE USED.

J.U.L.I.E.  
JOINT UTILITY LOCATION INFORMATION FOR EXCAVATION  
1-800-892-0123

2003 ADT=11,380

GROSS LENGTH = 2705.25 FEET = 0.512 MILES  
NET LENGTH = 2705.25 FEET = 0.512 MILES

STATE OF ILLINOIS  
DEPARTMENT OF TRANSPORTATION  
DIVISION OF HIGHWAYS

SUBMITTED Dec 7, 2005  
*Christ H. Reed*  
DEPUTY DIRECTOR OF HIGHWAYS, REGION ENGINEER


December 9, 2005  
*Mike Hine*  
ENGINEER OF DESIGN AND ENVIRONMENT

December 9, 2005  
*Eric Stamm*  
DEPUTY DIRECTOR OF HIGHWAYS, CHIEF ENGINEER

**PRINTED BY THE AUTHORITY  
OF THE STATE OF ILLINOIS**

PROJECT ENGINEER : MIKE ALLEN  
SQUAD LEADER : BRIAN LEWIS  
DESIGNER :  
TELEPHONE : 217/342-3951 EX 316

CONTRACT NO. 74142

 Rev. 1-3-06