

Bench Mark: Painted "□" on west bearing seat of north abutment = 505.41 taken from bridge construction project C-98-536-71, F.A. 68, Sec. 108BR, Madison Co.

Existing Structure: S.N. 060-0106 Built 1931 as S.B.I. Route 150, Sec. 108-B+C at Station 264+00 as a six simple span 277'-9" bk.-bk. abutments, supported on timber piles. Bridge widening, and superstructure replacement with PPC deck beam in 1971. Existing bridge to be removed and replaced. Traffic to be maintained utilizing stage construction.

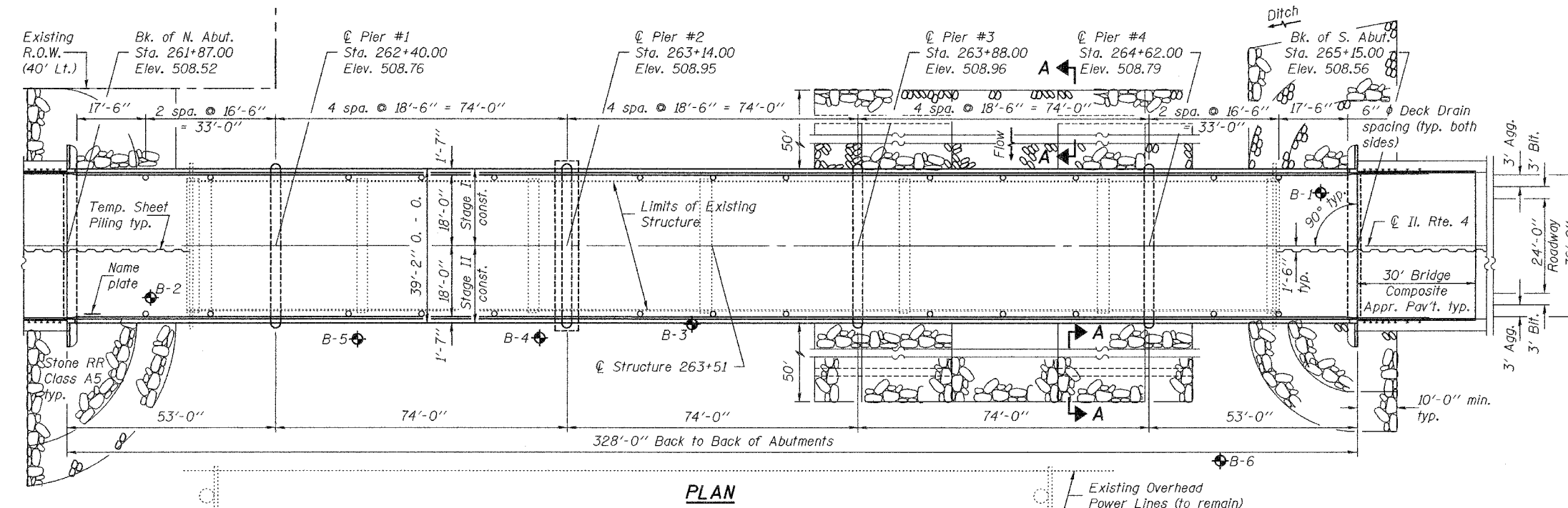
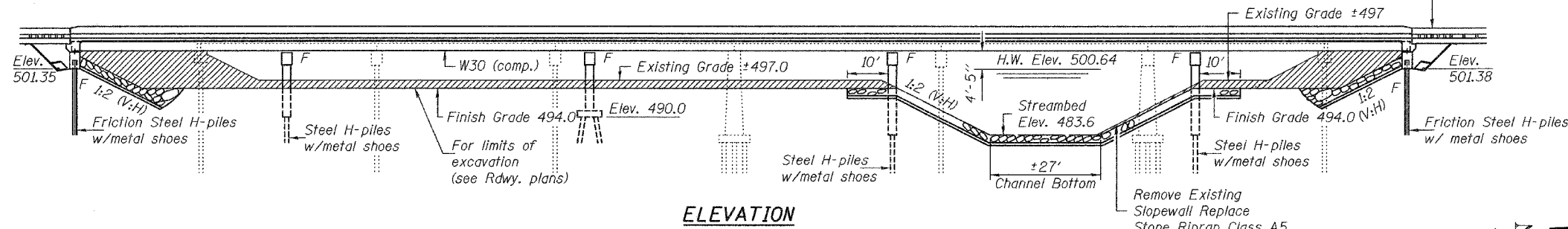
No salvage

STATE OF ILLINOIS
DEPARTMENT OF TRANSPORTATION

ROUTE NO.	SECTION	COUNTY	TOTAL SHEETS	SHEET NO.	SHEET NO. 1 29 SHEETS
FAP 314	108BR-1	MADISON	123	29	
FED. ROAD DIST. NO. 7		ILLINOIS	FED. AID PROJECT-		Contract #76454

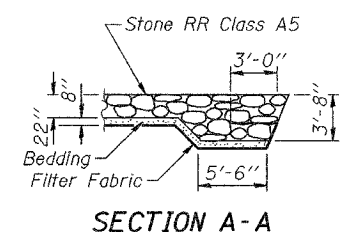
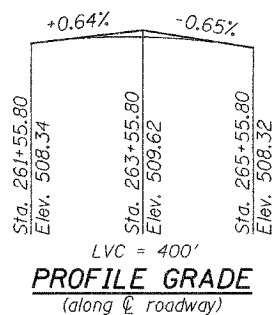
INDEX OF SHEETS

- 1 General Plan
- 2 General Data and Stage Construction Details
- 3 Temporary Sheet Piling Details
- 4 Temporary Concrete Barrier Details
- 5-7 Top of Slab Elevations
- 8 Superstructure
- 9-10 Superstructure Details
- 11 Diaphragm Details
- 12 Structural Steel
- 13 Structural Steel Details
- 14 Anchor Bolt Details
- 15 North Abutment
- 16 South Abutment
- 17 Pier 1
- 18 Pier 2
- 19 Pier 3
- 20 Pier 4
- 21 Bar Splicer Assembly Details
- 22-23 Bridge Approach Pavement Details
- 24-29 Boring Logs



STATION 263+51
BUILT 20 BY
STATE OF ILLINOIS
F.A.P. RTE. 314 SEC. 108BR-1
LOADING HL-93
STRUCTURE NO. 060-0334

NAME PLATE
See Std. 515001



LOADING HL-93
Allow 50 psf for future wearing surface

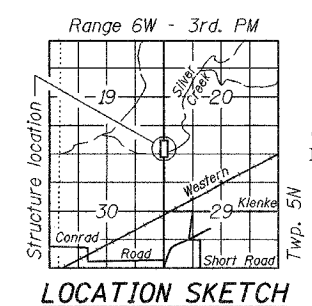
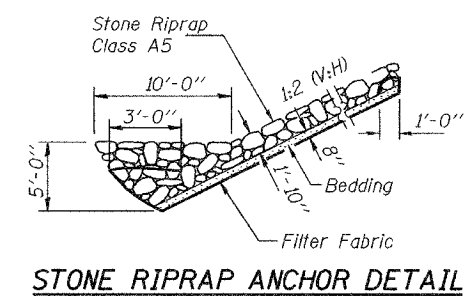
DESIGN SPECIFICATIONS
A.A.S.H.T.O. LRFD Bridge Design Specifications
U.S., 3rd Edition - 2004

DESIGN STRESSES

$f'_c = 4,500$ psi (precast concrete)
 $f'_c = 3,500$ psi (cast in place concrete)
 $f_y = 60,000$ psi (reinforcement)
 $f_y = 50,000$ psi (structural steel M270, Gr. 50)
 $f = 36,000$ psi (structural steel M270, Gr. 36)

SEISMIC DATA

Seismic Performance Zone (SPZ) = 2
Bedrock Acceleration Coefficient (A) = 0.10g
Site Coefficient (S) = 1.5



GENERAL PLAN
IL. RTE. 4 OVER SILVER CREEK
F.A.P. RTE. 314 - SEC. 108BR-1
MADISON COUNTY
STATION 263+51
STRUCTURE NO. 060-0334

WATERWAY INFORMATION

Drainage Area = 80.46 sq. mi. Low Grade Elev. 506.87 @ Sta. 258+00

Flood	Freq. Yr.	a	Opening Sq. Ft.		Nat. H.W.E.	Head - Ft.		Headwater El.	
			Exist.	Prop.		Exist.	Prop.	Exist.	Prop.
Design	50	10.421	1,420	1,543	500.64	4.83	4.48	505.47	505.12
Base	100	11.918	1,535	1,679	501.11	5.37	4.89	506.48	506.00
Overtopping	143/200*	12.550/13.487	1,582	1,814	501.30/501.57*	5.57	5.30	506.87	506.87
Scour	10	6.887	1,120	1,188	499.40	3.75	3.49		502.89

* Existing/Proposed

DESIGNED: [Signature]
CHECKED: [Signature]
DRAWN: h.t. duong
CHECKED: [Signature]

November 17, 2005
EXAMINED: [Signature]
PASSED: [Signature]



EXPIRES 11-30-2006