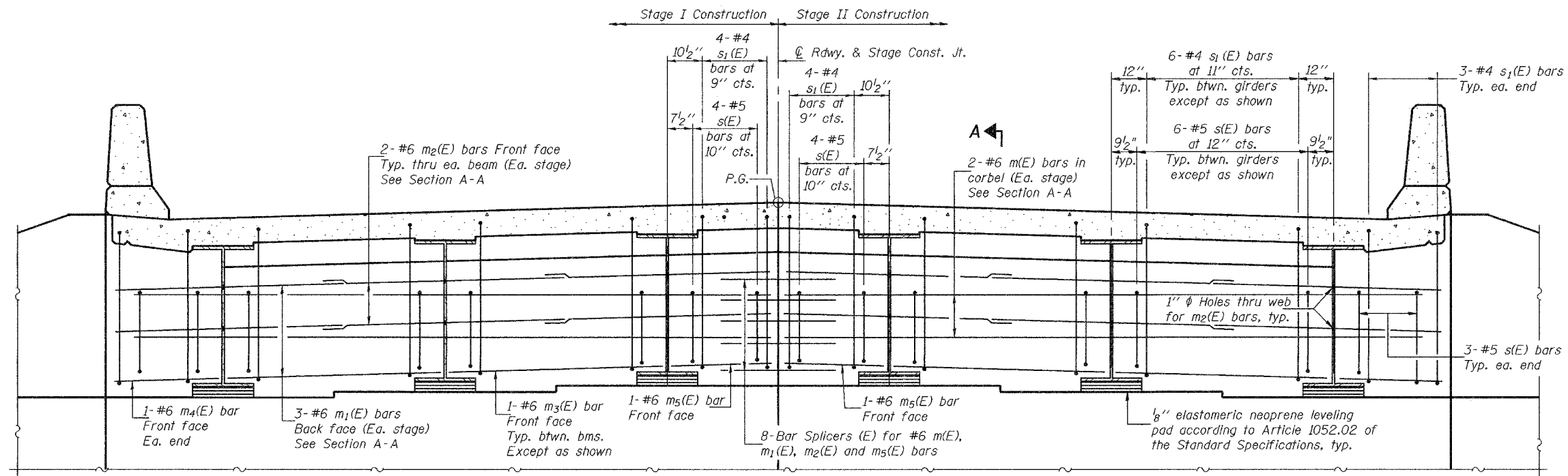


STATE OF ILLINOIS  
DEPARTMENT OF TRANSPORTATION

ROUTE NO.	SECTION	COUNTY	SHEET NO.	SHEET	SHEET NO. 11
FAP 314	108BR-1	MADISON	123	39	29 SHEETS
FED. ROAD DIST. NO. 7	ILLINOIS	FED. AID PROJECT-			

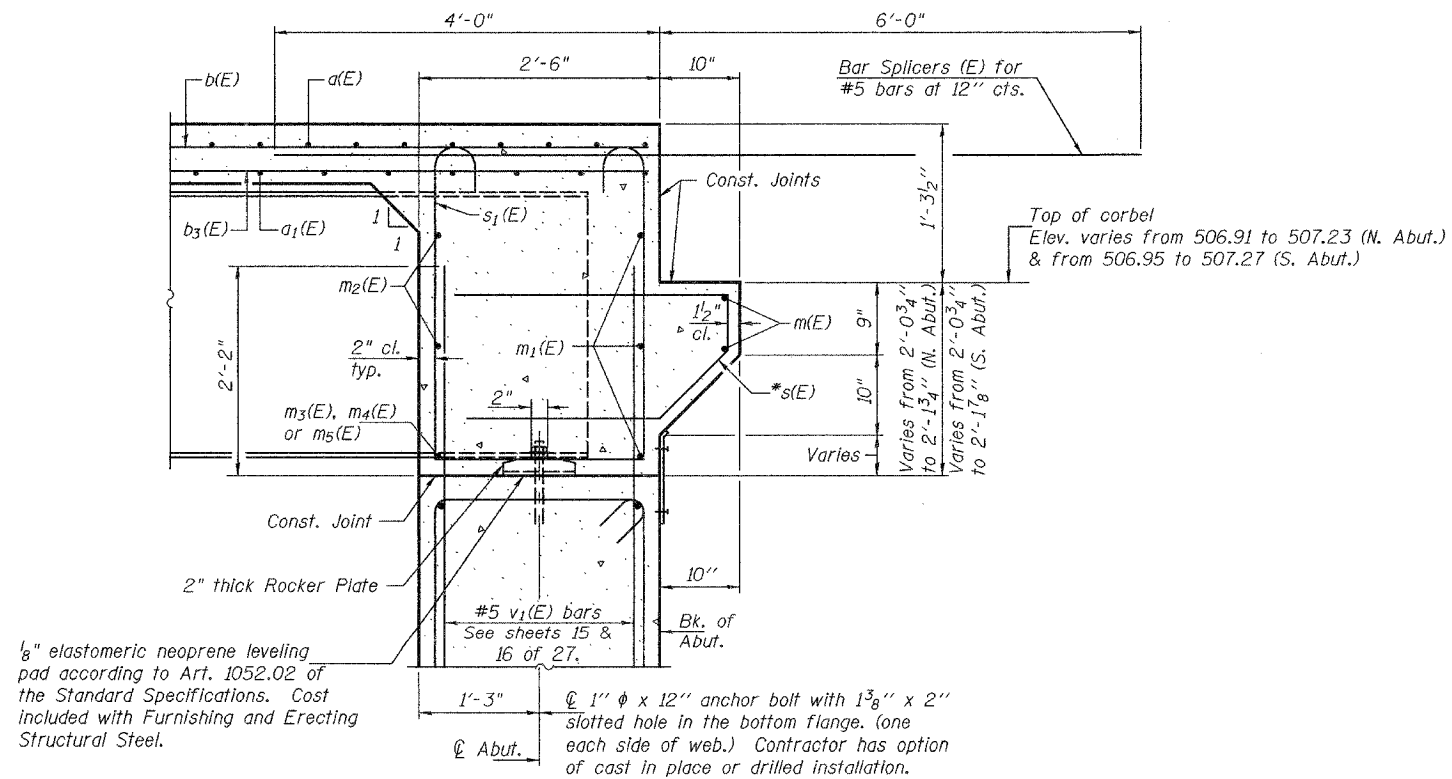
Contract #76454



**DIAPHRAGM ELEVATION AT ABUTMENT**  
(Looking South)

**Notes:**  
Reinforcement bars in diaphragm are billed with superstructure on sheet 10 of 29.  
Concrete in diaphragm is included with Concrete Superstructure on sheet 10 of 29.  
For details of bars s(E) & s1(E) see sheet 10 of 29.  
See sheet 12 of 29 for holes thru web for m2(E) bars.  
For anchor bolt details see sheet 14 of 29.  
For bar splicer (E) details see sheet 21 of 29.

**MIN. BAR LAP**  
#6 bar = 2'-9"



**SECTION A-A**

\* Space reinforcement in corbel to miss anchor dowels.  
See sheets 22 & 23 of 29 for anchor dowel location.

DESIGNED	Curt M. Evoy
CHECKED	Tom L. Kurtenbach
DRAWN	h.t. duong
CHECKED	CME/TLK

November 17, 2005  
EXAMINED *Thomas J. Damagala*  
PASSED *Ralph E. Anderson*  
ENGINEER OF BRIDGES AND STRUCTURES

**DIAPHRAGM DETAILS**  
F.A.P. RTE. 314 - SEC. 108BR-1  
MADISON COUNTY  
STATION 263+51  
STRUCTURE NO. 060-0334