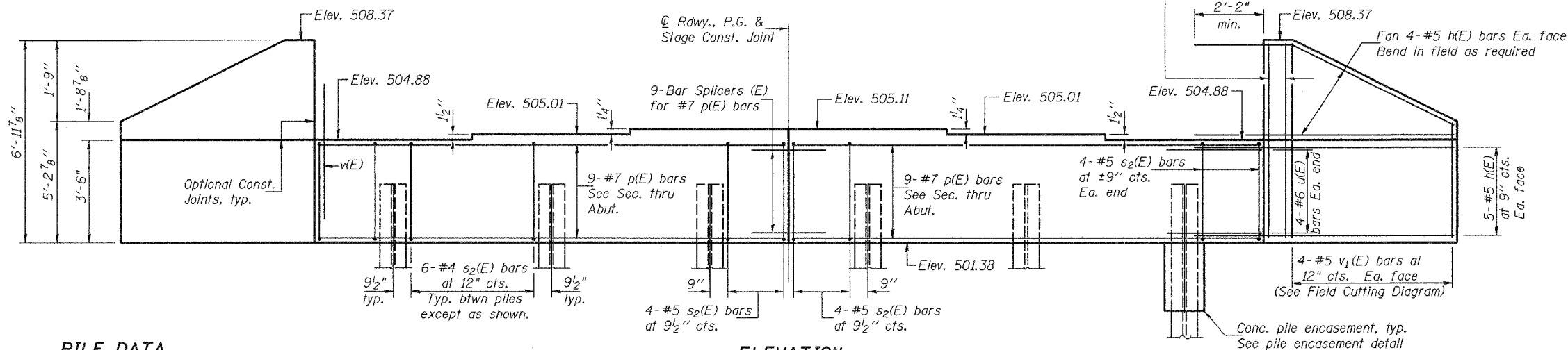


STATE OF ILLINOIS
DEPARTMENT OF TRANSPORTATION

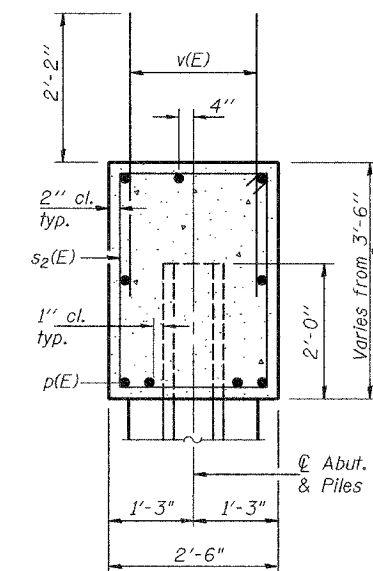
ROUTE NO.	SECTION	COUNTY	STAGE	SHEET	SHEET NO. 16 29 SHEETS
FAP 314	108BR-1	MADISON	123	44	
FED. ROAD DIST. NO. 7		ILLINOIS		FED. AID PROJECT-	

Contract #76454

Notes:
Pour steps monolithically with cap.
Reinforcement bars designated (E) shall be epoxy coated.
For anchor bolt installation details see sheet 14 of 29.
For bar splicer assembly details see sheet 21 of 29.



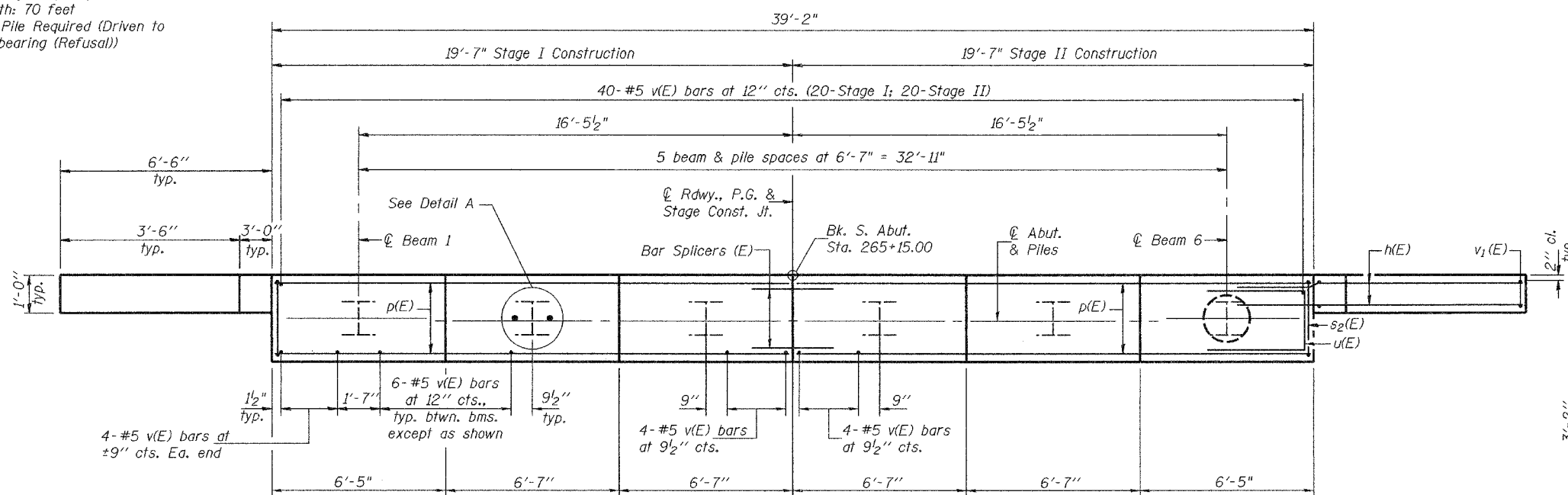
ELEVATION
(Looking South)



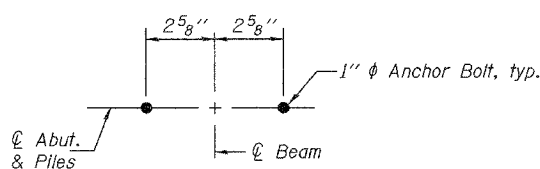
SEC. THRU ABUT.

PILE DATA

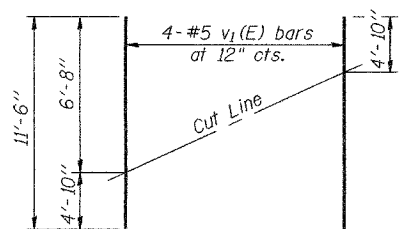
Type: Steel HP12x53 w/metal shoes
Nominal Required Bearing: 247 tons
Nominal Design Capacity: 164 tons
Est. Length: 70 feet
One Test Pile Required (Driven to 419 tons bearing (Refusal))



PLAN

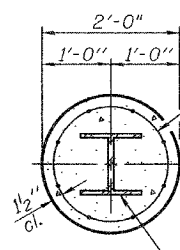


DETAIL A



FIELD CUTTING DIAGRAM

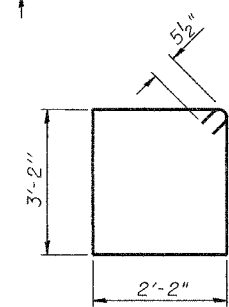
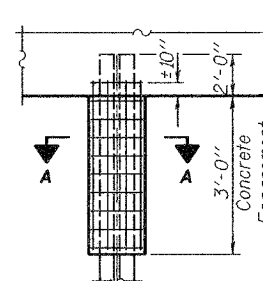
Order v1(E) full length. Cut as shown and use remainder of bars in opposite face.



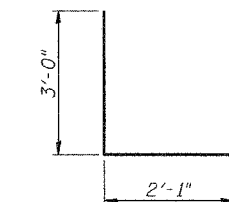
SECTION A-A
HP12x53

Welded wire fabric 6 x 6-W4.0 x W4.0 weighing 58#/100 sq. ft. The cost of Excavation, Concrete Encasement and Reinforcement is included with Concrete Encasement. Forms for Encasement may be omitted when soil conditions permit.

PILE ENCASUREMENT DETAIL



BAR s2(E)



BAR u(E)

BILL OF MATERIAL

Bar	No.	Size	Length	Shape
h(E)	36	#5	9'-0"	—
p(E)	18	#7	19'-3"	—
s2(E)	40	#5	11'-7"	□
u(E)	8	#6	8'-1"	□
v(E)	80	#5	4'-4"	—
v1(E)	8	#5	11'-6"	—
v2(E)	12	#5	6'-7"	—
Concrete Structures		Cu. Yd.	16.3	
Reinforcement Bars, Epoxy Coated		Pound	2170	
Structure Excavation		Cu. Yd.	95.4	
Furnishing Steel Piles HP12x53		Foot	350	
Driving Steel Piles		Foot	350	
Test Pile Steel HP12x53		Each	1	
Metal Shoes		Each	5	
Concrete Encasement		Cu. Yd.	2.0	

SOUTH ABUTMENT
F.A.P. RTE. 314 - SEC. 108BR-1
MADISON COUNTY
STATION 263+51
STRUCTURE NO. 060-0334

DESIGNED	Curt M. Evoy
CHECKED	Tom L. Kurtenbach
DRAWN	h.f. duong
CHECKED	CME/TLK

EXAMINED	November 17, 2005
PASSED	Thomas J. Donagale ENGINEER OF BRIDGE DESIGN
	Ralph E. Anderson ENGINEER OF BRIDGES AND STRUCTURES