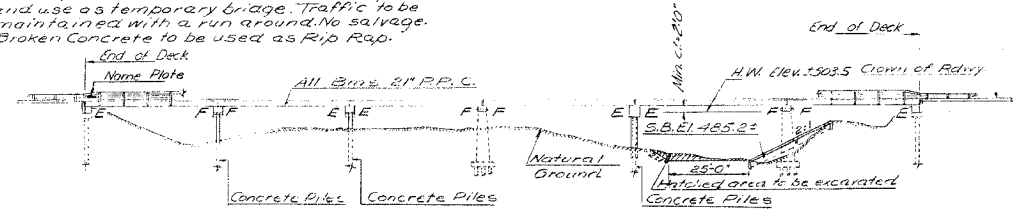


F.A.P. RTE.	SECTION	COUNTY	TOTAL SHEETS	SHEET NO.
314	108BR-I	MADISON	123	58
STA.		TO STA.		
FED. ROAD DIST. NO.		ILLINOIS FED. AID PROJECT		

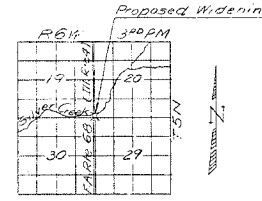
STATE OF ILLINOIS
DEPARTMENT OF TRANSPORTATION

SECTION	QUANTITY	UNIT	PRICE	TOTAL
68 108BR MADISON	38	8		

B.N. 17'0" Cut on top of Northwest wingwall 14' right of Station 262+17.43 Elev. 507.41
Existing Structure built 1935 as S.B.I. Rte. 150
Sec. 108 B&C Sta. 264+00; 4-144'-0" Beam Spans on pile bents E1-10H0 Truss span on 2 spile piers under Truss. Existing I-Beam Spans to be removed by Contractor. Pile bents & Solid Piers to be widened as required. Existing Truss span to be moved to new location by Contractor and use as temporary bridge. Traffic to be maintained with a run around. No salvage. Broken Concrete to be used as Rip Rap.



ELEVATION

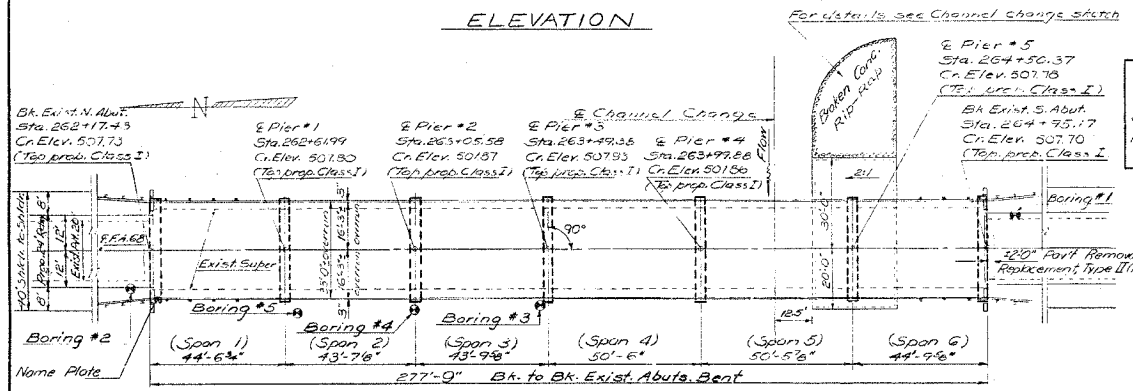


LOCATION SKETCH

PRECAST PRESTRESSED UNITS
 $f_c = 5000 \text{ psi}$
 $f_s = 4000 \text{ psi}$
 $f_b = 24000 \text{ psi (5 strands)}$
 $f_{si} = 173,600 \text{ psi (6 strands)}$

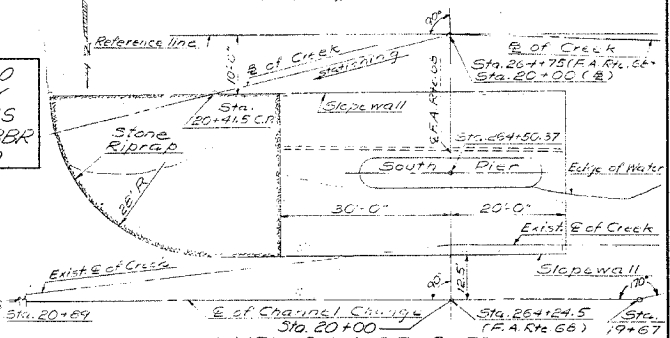
FIELD UNITS
 $f_c = 1400 \text{ psi (Pier)}$
 $f_c = 1000 \text{ psi (Abut)}$
 $f_b = 20,000 \text{ psi (Reinf.)}$
 $n = 10$

New Constr. Loading H.S. 20-44
Design Specifications: AASHTO 1969 as applicable
Allow 25' / sq. ft. for future W.S.

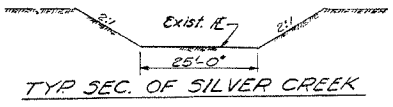


PLAN

STATION 264+00.00
REBUILT 197 BY
STATE OF ILLINOIS
F.A. RT. 68 SEC. 108BR
LOADING H520
NAME PLATE
(See Std. 2113)



CHANNEL CHANGE SKETCH

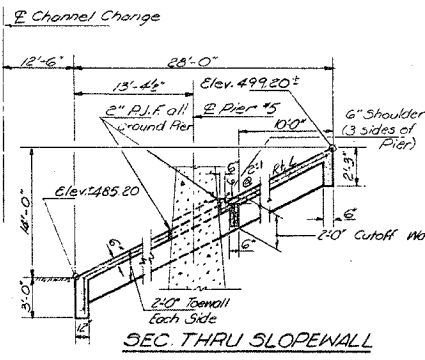


TYP. SEC. OF SILVER CREEK

WATERWAY INFORMATION
 Drainage Area 812 Sq. mi.
 Character: Ordinary Water Eler. 485.40
 Low Water Eler. 486.40
 Present Opening 2,775 Sq. ft.
 Proposed Opening 2,775 Sq. ft.

Q(50) = 12,220 cfs

DESIGNED	Stacy S. Slav	EXAMINED	17 1971
CHECKED	John Chittler	PASSED	
DRAWN	A. Borrozo	APPROVED	
CHECKED	G. L. S. L.		



SEC. THRU SLOPEWALL

GENERAL NOTES
 All reinforcement bars shall be lapped 24 diameters unless otherwise shown.
 Slope wall shall be reinforced with welded wire fabric 6x6 mesh, weighing 58# per 100 sq. ft.
 Layout of slope walls may be varied in the field to suit ground conditions as directed by the Engineer.
 It shall be the responsibility of the Contractor to verify all dimensions and conditions existing in the field prior to construction and ordering of materials.
 One coat of basic lead silico chromate shop primer shall be used for painting of Structural Steel.
 Expansion bolts shall consist of self-drilling expansion anchors and 1/2" hooked bolts. Hooked bolts shall extend a minimum of 12" into new concrete, unless otherwise shown.
 Limits of Waterproofing Membrane System Coat shall be end to end of deck bms. and out to out of deck.
 The top surface of the beams shall be finished in accordance with Article 505.06 of the Standard Specifications except the top surface shall not be roughened by brooming. The finished surface shall be free of depressions or high spots with sharp corners.

TOTAL BILL OF MATERIAL

Item	Units	Super	Sub	Total
Bituminous Concrete Surface Course Class 1	Tons	173		173
Removal of Existing Superstructures	Ea.	1		1
Concrete Repair	Cu. Yd.	83.22	13.22	96.44
Expansion Bolts 3/4"	Ea.		276	276
Class 1 Concrete	Cu. Yd.	8.3	206.4	214.7
Precast Prestressed Concrete Deck Beams (2' Depth)	Sq. Ft.	9031		9031
Steel Railing Type N	Lin. Ft.	533		533
Reinforcement Bars	Pound	690	7480	8170
Concrete Piles	Lin. Ft.	1	328	329
Name Plates	Ea.		231	231
Slope Wall (6")	Sq. Yd.	1006		1006
Pavement Removal & R.P.C. Replacement Type I (10")	Sq. Yd.	11		11
Preformed Joint Sealer (2 1/2")	Lin. Ft.	132		132
Stone Riprap	Sq. Yd.		112	112
Channel Excavation	Cu. Yd.		526	526
Structural Steel	Pound	9380		9380
Portland Cement Mortar Finishing Course	Lin. Ft.	2687		2687

GENERAL PLAN & ELEVATION
 F.A. RT. 68 OVER SILVER CREEK
 F.A. RT. 68 (ILL. RT. 4) SEC. 108BR
 MADISON COUNTY
 STATION 264+00

AS PER S.D. 9-10-76 D.L.C.

FOR INFORMATION ONLY

REVISIONS	
NAME	DATE

ILLINOIS DEPARTMENT OF TRANSPORTATION
 EXISTING STRUCTURE PLANS
 FAP ROUTE 314
 SECTION 108BR-I
 MADISON COUNTY

PLOT DATE = 10/16/2005
 FILE NAME = c:\projects\108br\108br\plan\p108br02701086.dgn
 PLOT SCALE = 50.0000 / 1"
 REFERENCE = #REF#