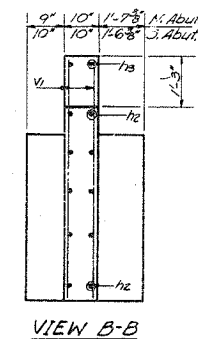
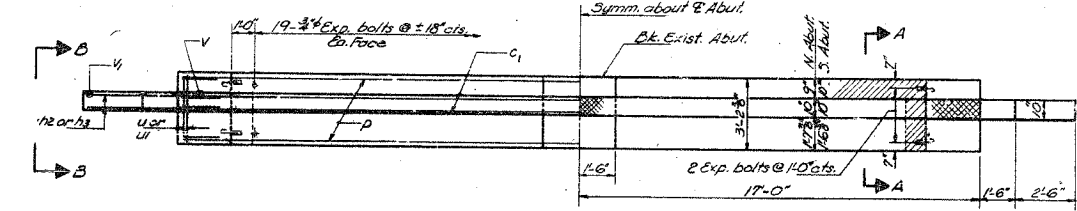
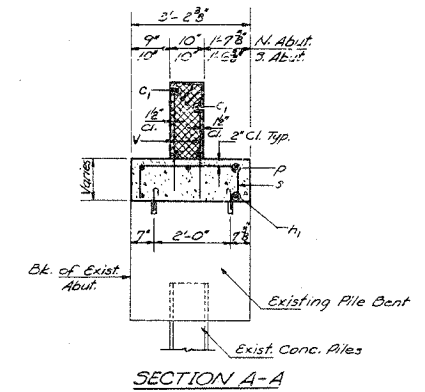
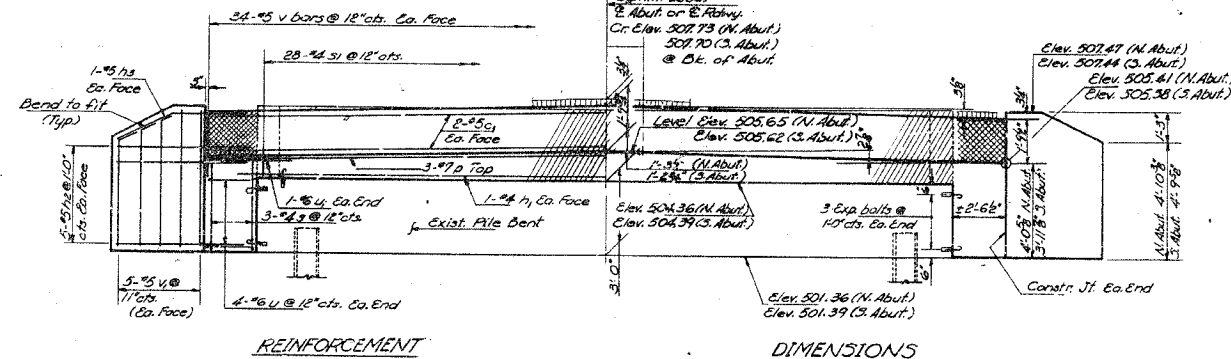


| F.A.P. RTE. | SECTION | COUNTY | TOTAL SHEETS | SHEET NO. |
|---------------------|---------|---------------------------|--------------|-----------|
| 314 | 108BR-I | MADISON | 123 | 59 |
| STA. | | TO STA. | | |
| FED. ROAD DIST. NO. | | ILLINOIS FED. AID PROJECT | | |

STATE OF ILLINOIS
DEPARTMENT OF TRANSPORTATION

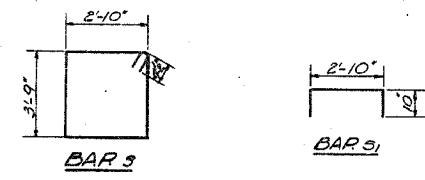
| | | | | |
|------------|----------------|---------------|-------|-----------|
| DATE | BY | CHECKED | SCALE | SHEET NO. |
| 10/15/2005 | STANLEY S. LIN | DANIEL WILSON | 3/8" | 11 |



TWO ABUTMENTS
BILL OF MATERIAL

| Bar | No. | Size | Length | Shape |
|------------------------|-----|------|---------|-------|
| D1 | 4 | #4 | 32'-0" | — |
| H2 | 40 | #5 | 6'-0" | — |
| H3 | 8 | #5 | 6'-0" | — |
| P | 6 | #7 | 33'-9" | — |
| S | 12 | #4 | 13'-11" | □ |
| Z1 | 26 | #4 | 4'-6" | □ |
| U | 16 | #6 | 7'-7" | □ |
| U1 | 4 | #6 | 9'-3" | □ |
| V | 136 | #5 | 2'-6" | — |
| V1 | 40 | #5 | 5'-9" | — |
| Class X Concrete Cu Yd | | | | 15.6 |
| Reinf. Bars Pound | | | | 190 |
| Exp. Bolts (C&V) Co. | | | | 100 |
| Conc. Removal Cu Yd | | | | 6 |

The length and quantities of reinforcement bar #5 and Class X Concrete cross hatched area are not included in above quantities. See sheet #3.



Notes:
Hatched area indicates Concrete Removal. Reinforcement extending into removed area shall be cleaned & incorporated into the new construction.
All edges shall have standard 3/8" chamfers except as noted.
Cross hatched area shall be poured after beams are in place. Quantity of concrete included in superstr.
Expansion bolts shall be anchored in sound concrete.

| | | | |
|----------|----------------|----------------------|----------------|
| DESIGNED | Stanley S. Lin | PLANNED | Stanley S. Lin |
| CHECKED | Daniel Wilson | PARED | Daniel Wilson |
| DRAWN | A. D. ... | APPROVED | ... |
| CHECKED | ... | DIRECTOR OF HIGHWAYS | ... |

N.E.S. ABUTMENTS
F.A. RT. 68 SEC. 108BR
MADISON COUNTY
STA. 264+00

FOR INFORMATION ONLY

| REVISIONS | |
|-----------|------|
| NAME | DATE |
| | |
| | |
| | |
| | |
| | |
| | |
| | |
| | |
| | |

ILLINOIS DEPARTMENT OF TRANSPORTATION

EXISTING STRUCTURE PLANS

FAP ROUTE 314
SECTION 108BR-I
MADISON COUNTY