

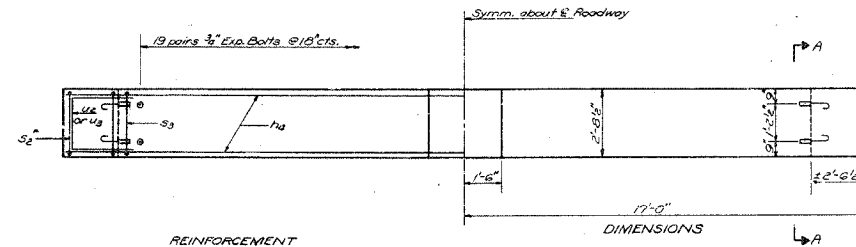
F.A.P. RTE.	SECTION	COUNTY	TOTAL SHEETS	SHEET NO.
314	108BR-1	MADISON	123	60
STA.		TO STA.		
FED. ROAD DIST. NO.		ILLINOIS FED. AID PROJECT		

FILE DATA

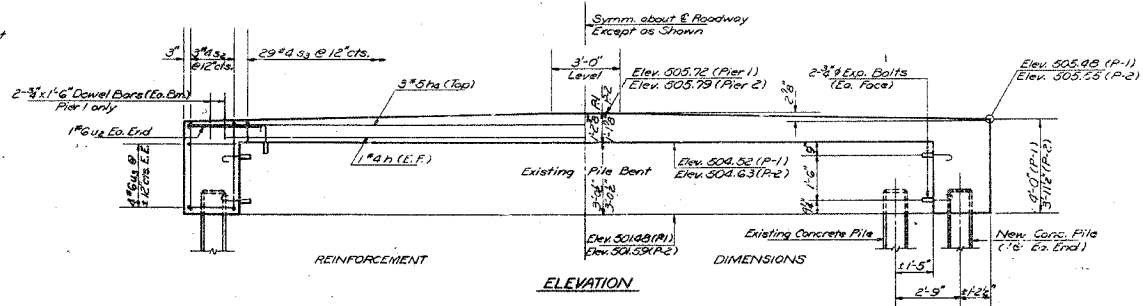
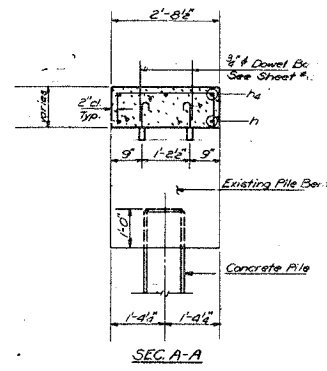
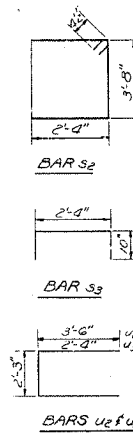
Type: Concrete
 Capacity: 45 Tons
 Est. Length: 45'-0"
 No. Required: 4 (2 ea. pier)

STATE OF ILLINOIS
 DEPARTMENT OF TRANSPORTATION

PROJECT NO.	SECTION	COUNTY	SHEET NO.	TOTAL SHEETS
108BR	MADISON	38	13	11 SHEETS



PLAN



ELEVATION

BILL OF MATERIAL

Bar	No	Size	Length	Shape
h	4	#4	31'-0"	
ha	6	#5	33'-9"	
ss	12	#4	2'-9"	1/4"
ss	36	#4	4'-0"	
u2	4	#6	9'-3"	
u3	16	#6	6'-11"	
Class X Concrete		Cu. Yd.	10.3	
Reinforcement Bars		Pounds	770	
Expansion Bolts 1/2"		Each	32	
Concrete Piles		Lin. Ft.	192	

Notes:
 All edges shall have 1/4" chamfers
 except as noted.
 Expansion Bolts shall be anchored
 in sound concrete.

DESIGNED: <i>Stacy S. Lin</i>	EXAMINED: <i>[Signature]</i>
CHECKED: <i>[Signature]</i>	PASSED: _____
DRAWN: <i>J. Sutherland R.D.</i>	APPROVED: _____
CHECKED: <i>D.L.C. S.L.</i>	DIRECTOR OF HIGHWAYS

PIERS 112
 F.A. RT. 68 SEC. 108 BR
 MADISON COUNTY
 STATION 264+00

FOR INFORMATION ONLY

REVISIONS	
NAME	DATE

ILLINOIS DEPARTMENT OF TRANSPORTATION
EXISTING STRUCTURE PLANS
 FAP ROUTE 314
 SECTION 108BR-1
 MADISON COUNTY

PLOT DATE = 12/6/2005
 FILE NAME = c:\projects\1082701\plan\1082701a85.dgn
 PLOT SCALE = 5/8"=1'-0" / IN.
 REFERENCE = #REF#