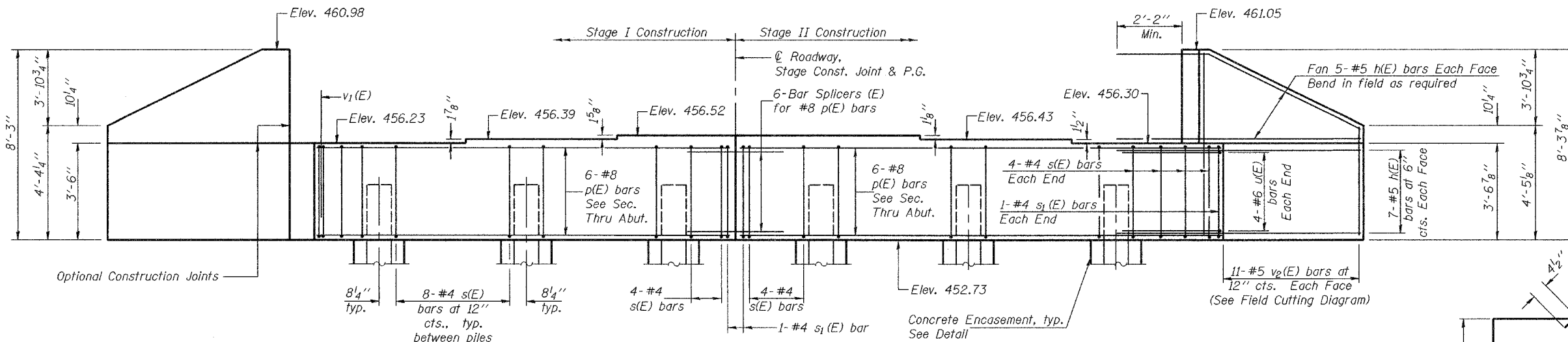


Notes: Four steps monolithically with cap.  
Reinforcement bars designated (E)  
shall be epoxy coated.

STATE OF ILLINOIS  
DEPARTMENT OF TRANSPORTATION

ROUTE NO.	SECTION	COUNTY	TOTAL SHEETS	SHEET NO.	SHEET NO. 13
FAP 314	11IBR-1	MADISON	123	103	17 SHEETS
FED. ROAD DIST. NO. 7	ILLINOIS	FED. AID PROJECT-			

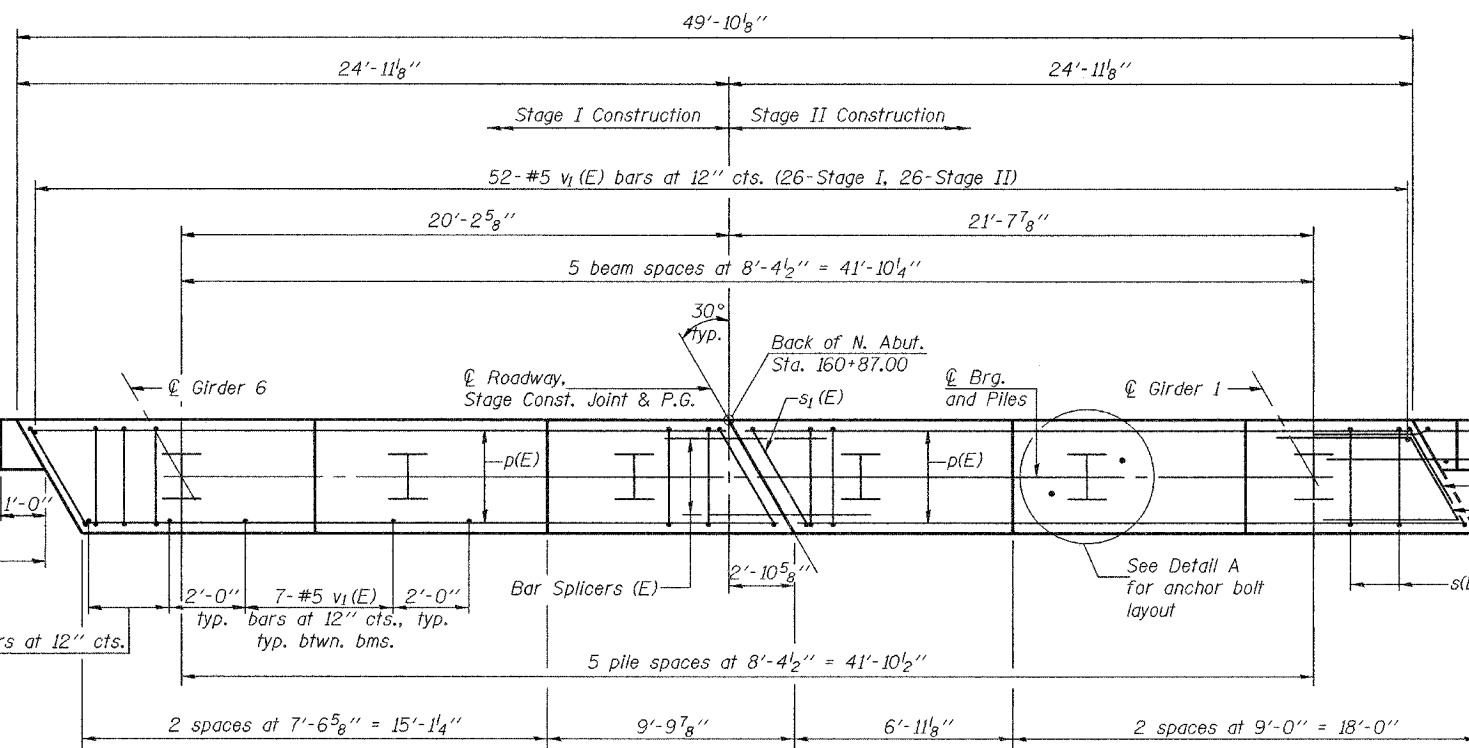
Contract No. 76454



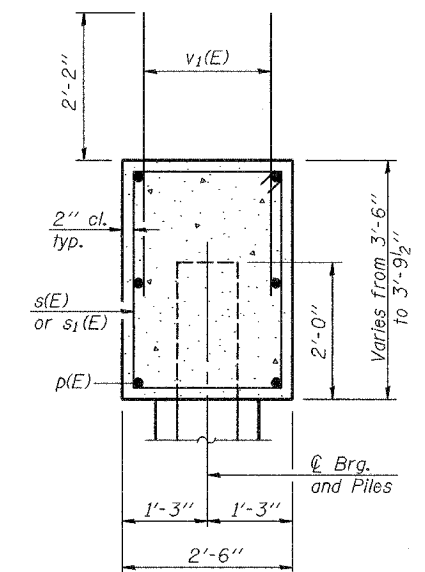
**ELEVATION**  
(Looking North)

**PILE DATA**

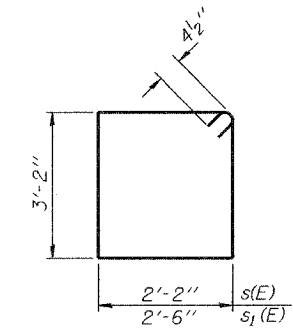
Type: Refusal HP12x63 with metal shoes  
Nominal Required Bearing: 490 tons  
Nominal Design Capacity: 327 tons  
Est. Length: 107'  
No. Required: 5 + 1 test pile



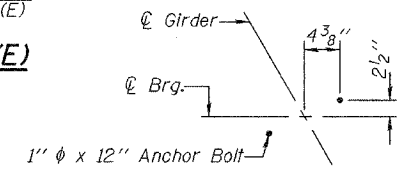
**PLAN**



**SEC. THRU ABUT.**



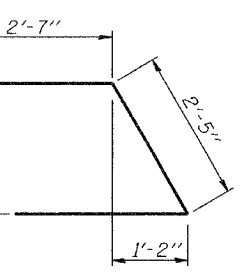
**BARS s(E) & s1(E)**



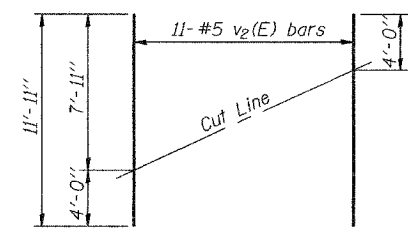
**DETAIL A**

**BILL OF MATERIAL**

Bar	No.	Size	Length	Shape
h(E)	48	#5	13'-0"	
p(E)	12	#8	24'-7"	
s(E)	48	#4	11'-5"	□
s1(E)	4	#4	12'-1"	□
u(E)	8	#6	7'-7"	∟
v1(E)	95	#5	4'-4"	
v2(E)	22	#5	11'-11"	
Concrete Structures			Cu. Yd.	21.6
Reinforcement Bars, Epoxy Coated			Pound	2630
Structure Excavation			Cu. Yd.	313
Bar Splicers (E)			Each	6
Furnishing Steel Piles HP12x63			Foot	535
Driving Steel Piles HP12x63			Foot	535
Test Pile Steel HP12x63			Each	1
Metal Shoes			Each	5

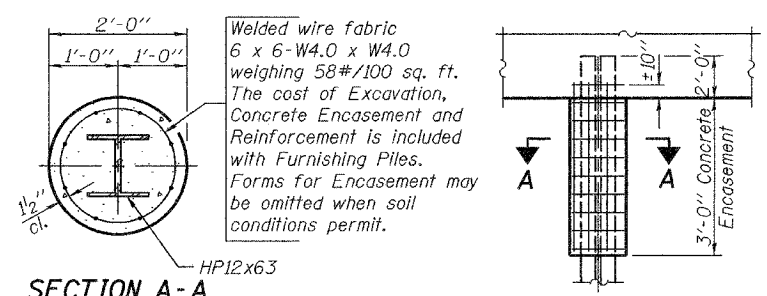


**BAR u(E)**



**FIELD CUTTING DIAGRAM**

Order v2(E) full length. Cut as shown and use remainder of bars in opposite face.



**SECTION A-A**

**PILE ENCASEMENT DETAIL**

DESIGNED	CEH
CHECKED	DHC
DRAWN	BECKY M. LEACH
CHECKED	CEH & DHC

November 10, 2005  
EXAMINED *Thomas J. Damgalaki*  
PASSED *Ralph E. Anderson*  
ENGINEER OF BRIDGE DESIGN  
ENGINEER OF BRIDGES AND STRUCTURES

AI-L 10-22-04

**NORTH ABUTMENT**  
**F.A.P. ROUTE 314 - SECTION 11IBR-1**  
**MADISON COUNTY**  
**STATION 161+40.00**  
**STRUCTURE NO. 060-0339**