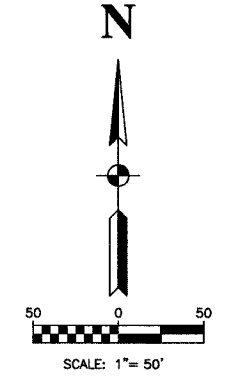
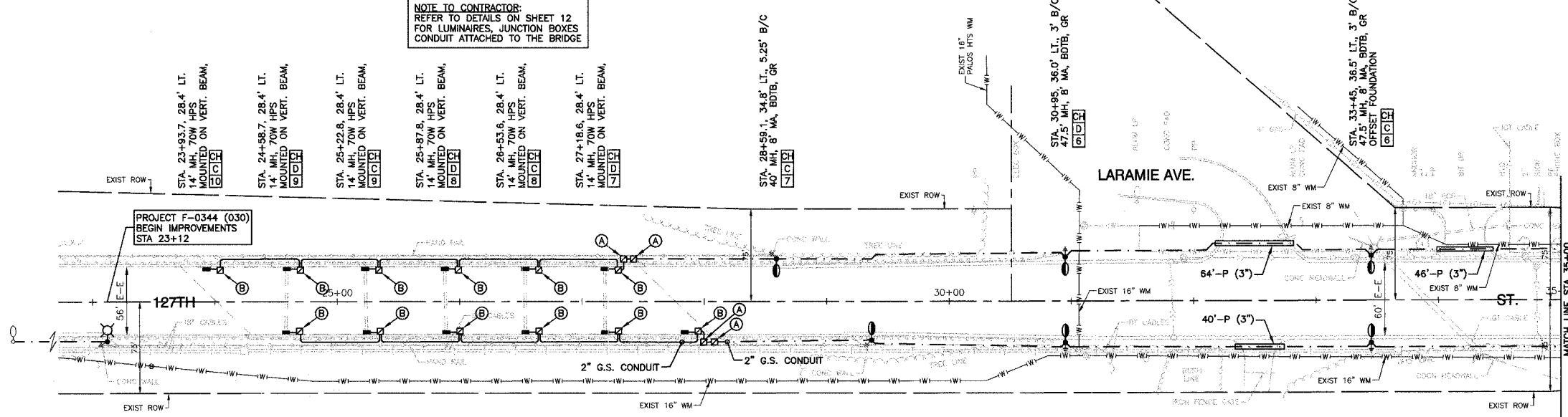


SECTION 28, TOWNSHIP 37, RANGE 13  
SECTION 33, TOWNSHIP 37, RANGE 13

F.A.P. REL.	SECTION	COUNTY	TOTAL SHEETS	SHEET NO.
344	00-00074-00-LT	COOK	12	3
STA.		TO STA.		
FED. ROAD DIST. NO.	ILLINOIS	FED. AID PROJECT		

**NOTE TO CONTRACTOR:**  
REFER TO DETAILS ON SHEET 12 FOR LUMINAIRES, JUNCTION BOXES CONDUIT ATTACHED TO THE BRIDGE



**LEGEND**

- ⊕ Existing COM ED LIGHT ON WOOD POLE
- ⊙ Existing POWER POLE
- ⊙ Existing STREET LIGHT
- ⊙ Proposed LIGHT STANDARD, 250W HPS, 240V, 1PH LUMINAIRE, 47.5' MH, 8' MA
- ⊙ Proposed LIGHT STANDARD, 250W HPS, 240V, 1PH LUMINAIRE, 40' MH, 8' MA
- ⊙ Proposed LIGHT STANDARD, 400W HPS, 240V, 1PH LUMINAIRE, 47.5' MH, 8' MA
- Proposed 100 WATT HPS UNDERPASS LIGHT, 240V, 1PH
- ⊠ Proposed LIGHTING CONTROLLER
- ⊠ or ⊡ Proposed JUNCTION BOX - LARGE (16"x 14"x 6")
- ⊠ or ⊡ Proposed JUNCTION BOX - MEDIUM (10"x 12"x 6")
- ⊕ Ground ROD, 5/8" DIA. x 10'
- P — Conduit, PUSHED, GALVANIZED STEEL, SIZE AS MARKED
- T — Conduit, TRENCHED, GALVANIZED STEEL, SIZE AS MARKED
- Unit DUCT, 3-1/2" NO.6 AWG AND NO.8 GROUND, 600V IN 1-1/4" POLYETHYLENE DUCT FOR ROADWAY LIGHTING.
- Unit DUCT, 3-1/2" NO.4 AWG AND NO.6 GROUND, 600V IN 1-1/4" POLYETHYLENE DUCT FOR ROADWAY LIGHTING.
- GALVANIZED STEEL CONDUIT, ATTACHED TO STRUCTURE, SIZE AS MARKED
- SERVICE WIRE, 3-1/2" NO.2
- (R) REMOVAL OF EXISTING STREET LIGHT
- LT. LEFT
- RT. RIGHT
- MH MOUNTING HEIGHT
- MA MAST ARM
- B/C BACK OF CURB
- B/EP BACK OF EDGE OF PAVEMENT
- BOTB BREAKAWAY DEVICE, TRANSFORMER BASE, LOW PROFILE TYPE
- GR GROUND ROD, 5/8" DIA. x 10'

CONNECT TO EXIST CRESTWOOD LIGHT STANDARD STA 21+47.0

STA. 23+12, 32.5' RT., 4.3' B/C 47.5' MH, 8' MA, BOTB, GR

STA. 24+58, 26.5' RT., 14' MH, 70W HPS MOUNTED ON VERT. BEAM

STA. 25+24, 26.5' RT., 14' MH, 70W HPS MOUNTED ON VERT. BEAM

STA. 25+89, 26.5' RT., 14' MH, 70W HPS MOUNTED ON VERT. BEAM

STA. 26+53, 26.5' RT., 14' MH, 70W HPS MOUNTED ON VERT. BEAM

STA. 27+18, 26.5' RT., 14' MH, 70W HPS MOUNTED ON VERT. BEAM

STA. 27+93, 26.5' RT., 14' MH, 70W HPS MOUNTED ON VERT. BEAM

SPEED LIMIT IN THIS AREA IS: 40 MPH

STA. 29+36, 31.9' RT., 4.3' B/C 47.5' MH, 8' MA, BOTB, GR

STA. 30+95, 34.9' RT., 3' B/C 47.5' MH, 8' MA, BOTB, GR

STA. 33+45, 34.7' RT., 3' B/C 47.5' MH, 8' MA, BOTB, GR

MATCH LINE STA 35+00

STA. 35+95, 36.6' LT., 3' B/C 47.5' MH, 8' MA, BOTB, GR

HOLIDAY DR.

STA. 38+45, 36.6' LT., 3' B/C 47.5' MH, 8' MA, BOTB, GR

STA. 40+95, 36.6' LT., 3' B/C 47.5' MH, 8' MA, BOTB, GR

PROJECT F-0344 (030) BEGIN LIGHTING OMISSION STA 40+95

CONNECTION TO EXISTING IDOT LIGHT STANDARD STA 43+45.1, (IDOT CONTRACT 60685)

CONNECTION TO EXISTING IDOT LIGHT STANDARD STA 43+45.3, (IDOT CONTRACT 60685)

STA. 35+95, 34.7' RT., 3' B/C 47.5' MH, 8' MA, BOTB, GR

STA. 38+45, 34.9' RT., 3' B/C 47.5' MH, 8' MA, BOTB, GR

SPEED LIMIT IN THIS AREA IS: 40 MPH

STA. 40+95, 34.9' RT., 3' B/C 47.5' MH, 8' MA, BOTB, GR

**ROBINSON ENGINEERING, LTD.**  
CONSULTING REGISTERED PROFESSIONAL ENGINEERS AND PROFESSIONAL LAND SURVEYORS  
17000 SOUTH PARK AVENUE SOUTH HOLLAND, ILLINOIS 60473  
(708) 381-8700 FAX (708) 381-3828  
© COPYRIGHT 2003

REVISIONS		
No.	Date	Remarks
1	05/24/05	PAP
2	08/05/05	PAP
3	11/01/05	PAP
4	11/28/05	BEO

127TH STREET  
STREET LIGHTING PLAN  
CAL SAG CHANNEL TO B.&O.C.T. RR  
STA. 23+00 TO STA. 45+00

**ALSIP, ILLINOIS**  
Drawn by: AG/EDG Date: 02/07/05  
Checked by: RY/III Scale: 1" = 50'  
Sheet of Project No. 99-562.02