

| FAU ROUTE NO.                  | SECTION | COUNTY | TOTAL SHEETS | SHEET NO. |
|--------------------------------|---------|--------|--------------|-----------|
| 1009                           | *       | COOK   | 9            | 1         |
| ILLINOIS PROJECT: M-8003 (451) |         |        |              |           |
| CONTRACT NO.: 83801            |         |        |              |           |
| * 01-00015-00-RS               |         |        |              |           |

STATE OF ILLINOIS  
DEPARTMENT OF TRANSPORTATION  
DIVISION OF HIGHWAYS

# PLANS FOR PROPOSED LOCAL AGENCY PAVEMENT PRESERVATION PROJECT FAU 1009 (207TH STREET) RESURFACING

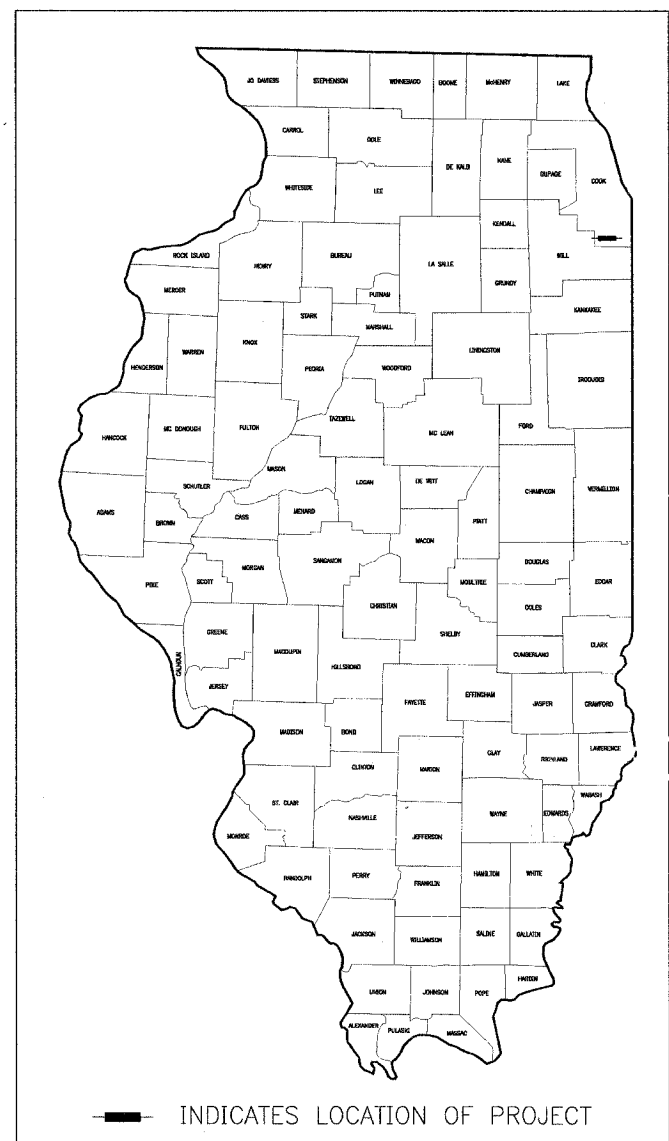
SECTION: 01-00015-00-RS  
GOVERNORS HIGHWAY TO OLYMPIAN WAY  
PROJECT NO.: M-8003 (451)  
VILLAGE OF OLYMPIA FIELDS  
COOK COUNTY  
JOB NO.: C-91-007-05

INDEX OF SHEETS

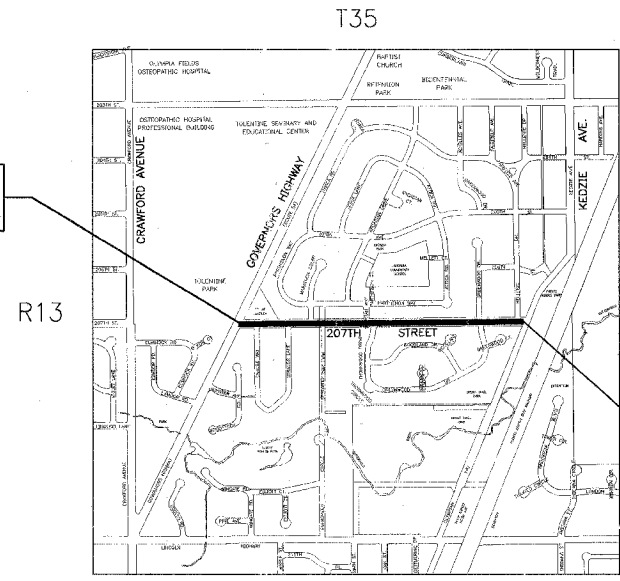
| SHEET NO. | TITLE   |
|-----------|---|
| 1         | COVER SHEET   |
| 2         | SUMMARY & SCHEDULE OF QUANTITIES, TYPICAL SECTIONS, LEGEND, DETAILS & GENERAL NOTES |
| 3         | 207TH STREET PLAN SHEET: STA. 10+24.51 TO STA. 31+50                                |
| 4         | 207TH STREET PLAN SHEET: STA. 31+50 TO STA. 44+56.75                                |
| 5         | IDOT DISTRICT ONE TYPICAL PAVEMENT MARKINGS   |
| 6         | IDOT PAVEMENT MARKING LETTERS & SYMBOLS FOR TRAFFIC STAGING                         |
| 7         | IDOT BUTT JOINT & BITUMINOUS TAPER DETAILS  |
| 8         | IDOT TRAFFIC CONTROL & PROTECTION FOR SIDE ROADS, INTERSECTIONS AND DRIVEWAYS       |
| 9         | IDOT TRAFFIC CONTROL & PROTECTION AT TURN BAYS (TO REMAIN OPEN TO TRAFFIC)          |

STANDARD  
NO.

|           |  |
|-----------|--|
| 000001-04 | STANDARD SYMBOLS, ABBREVIATIONS AND PATTERNS |
| 442201-01 | CLASS C AND D PATCHES                        |
| 701501-03 | URBAN LANE CLOSURE, 2L, 2W UNDIVIDED         |
| 702001-05 | TRAFFIC CONTROL DEVICES                      |
| 780001-01 | TYPICAL PAVEMENT MARKINGS                    |



NOT TO SCALE



PROJECT LOCATION 207TH STREET  
BEGIN RESURFACING: STA. 10+24.51

PROJECT LOCATION 207TH STREET  
END RESURFACING: STA. 44+56.75

DESIGN DESIGNATION  
207TH STREET (SCOTT DRIVE)  
LOCAL ROADS

TRAFFIC DATA  
207TH STREET (SCOTT DRIVE)  
POSTED OR DESIGN SPEED = 30 MPH  
2023 ADT = 450

LOCATION MAP

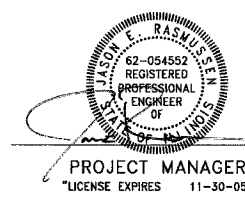
GROSS LENGTH OF PROJECT = 3,432.24 LIN. FT. OR 0.650 MILES  
NET LENGTH OF PROJECT = 3,432.24 LIN. FT. OR 0.650 MILES



Baxter & Woodman

Burlington, Wisconsin    262.763.7834    Crystal Lake, Illinois    815.459.1260    DeKalb, Illinois    815.787.3111    Mokena, Illinois    708.478.2090  
(OFFICE WHICH PREPARED PLANS)

BENCHMARK  
B.M. RIM OF 2nd WATER VALVE VAULT, EAST OF DANUBE WAY,  
SOUTH SIDE OF 207th STREET.  
ELEVATION = 710.47



PROJECT MANAGER  
"LICENSE EXPIRES 11-30-05"

STATE OF ILLINOIS  
DEPARTMENT OF TRANSPORTATION  
DIVISION OF HIGHWAYS

APPROVED May 19, 2005 *[Signature]*  
LOCAL AGENCY REPRESENTATIVE

APPROVED May 19, 2005 *[Signature]*  
LOCAL ROADS ENGINEER

APPROVED May 27, 2005 *[Signature]*  
DISTRICT ENGINEER

CALL JULIE 1-800-892-0123  
WITH THE FOLLOWING:  
COUNTY = COOK  
CITY-TOWNSHIP = OLYMPIA FIELDS - RICH TOWNSHIP  
SEC. & 1/4 SEC. NO. = SE & SW 1/4 - SEC. 14, NE & NW 1/4 - SEC. 23  
48 HOURS BEFORE YOU DIG  
EXCLUDING SAT., SUN. & HOLIDAYS

CONTRACT NO. **83801**

COUNTY COOK, SECTION: NUMBER 01-00015-00-RS

I.D.O.T. FEDERAL AID DESIGN ENGINEER: JESSICA MILLER 847-705-4487 SCHAUMBURG, IL.

COPYRIGHT © 2004, BY BAXTER & WOODMAN, INC.  
ALL RIGHTS RESERVED. NO PART OF THESE DRAWINGS  
MAY BE REPRODUCED, OR OTHERWISE COPIED, WITHOUT  
WRITTEN PERMISSION OF BAXTER & WOODMAN, INC.



|                                |         |        |              |           |
|--------------------------------|---------|--------|--------------|-----------|
| F.A.U. ROUTE NO.               | SECTION | COUNTY | TOTAL SHEETS | SHEET NO. |
| 1009                           | 5       | COOK   | 9            | 3         |
| ILLINOIS PROJECT: M-8003 (451) |         |        |              |           |
| CONTRACT NO.: 83801            |         |        |              |           |
| * 01-00015-00-RS               |         |        |              |           |

**BAXTER & WOODMAN**  
Consulting Engineers

*Baxter & Woodman*  
Crystal Lake, Illinois 815.459.1260  
Burlington, Wisconsin 262.763.7834  
Mokena, Illinois 708.478.2090  
DeKalb, Illinois 815.787.3111  
Grayslake, Illinois 847.233.5088  
www.baxwood.com

CONSULTANTS

| NO. | DATE     | DESCRIPTION       |
|-----|----------|-------------------|
| 1   | 07/09/04 | PER IDOT COMMENTS |

REFER TO EQUIPMENT MANUFACTURER'S SHOP DRAWING

PLAN SHEET DESIGNATION

- C - COVER
- G - GENERAL
- H - HAZARDOUS MATERIALS
- C - CIVIL
- L - LANDSCAPE
- S - STRUCTURAL
- A - ARCHITECTURAL
- I - INTERIORS
- O - EQUIPMENT
- F - FIRE PROTECTION
- P - PLUMBING
- M - MECHANICAL
- E - ELECTRICAL
- T - TELECOMMUNICATIONS
- R - RESOURCE

|               |                |
|---------------|----------------|
| PROJECT NO:   | 010146         |
| DWG FILE:     | 010146APLN.DWG |
| SCALE:        | AS SHOWN       |
| DRAWING DATE: | 11-12-03       |
| DESIGNED BY:  | JER            |
| DRAWN BY:     | TJB            |
| CHECKED BY:   | LDH            |
| PLOTTED BY:   | TJB 05-19-05   |

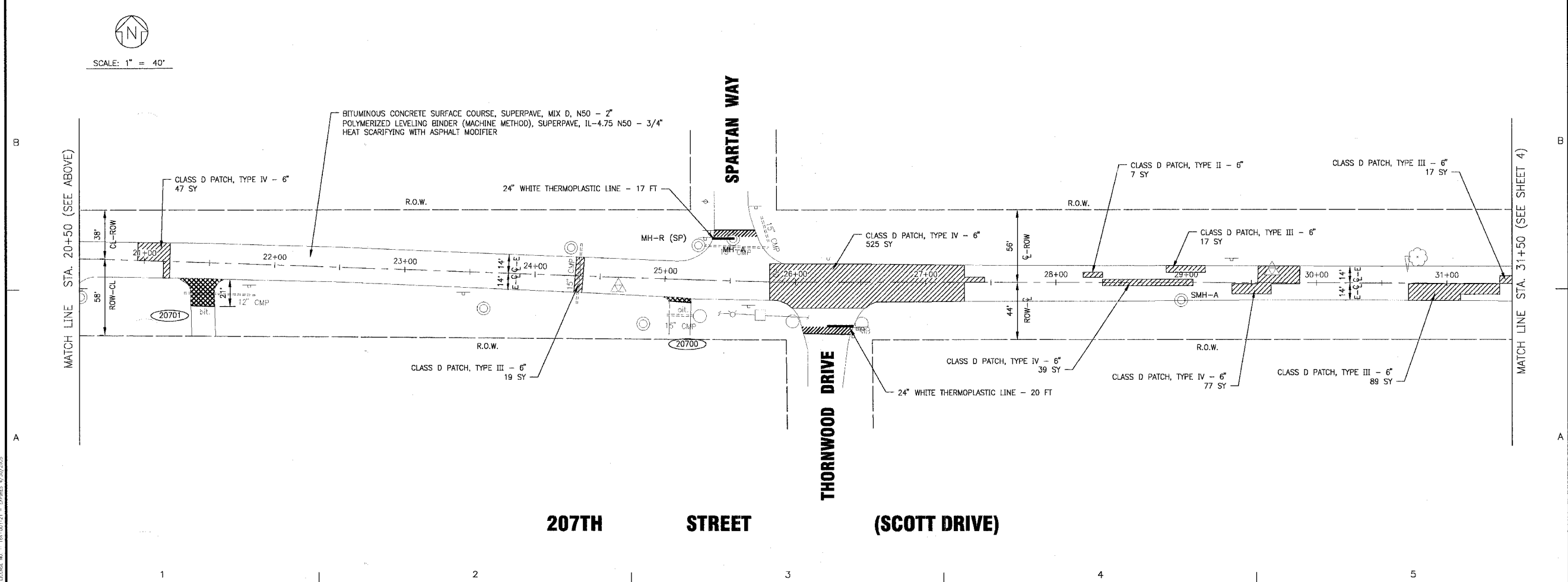
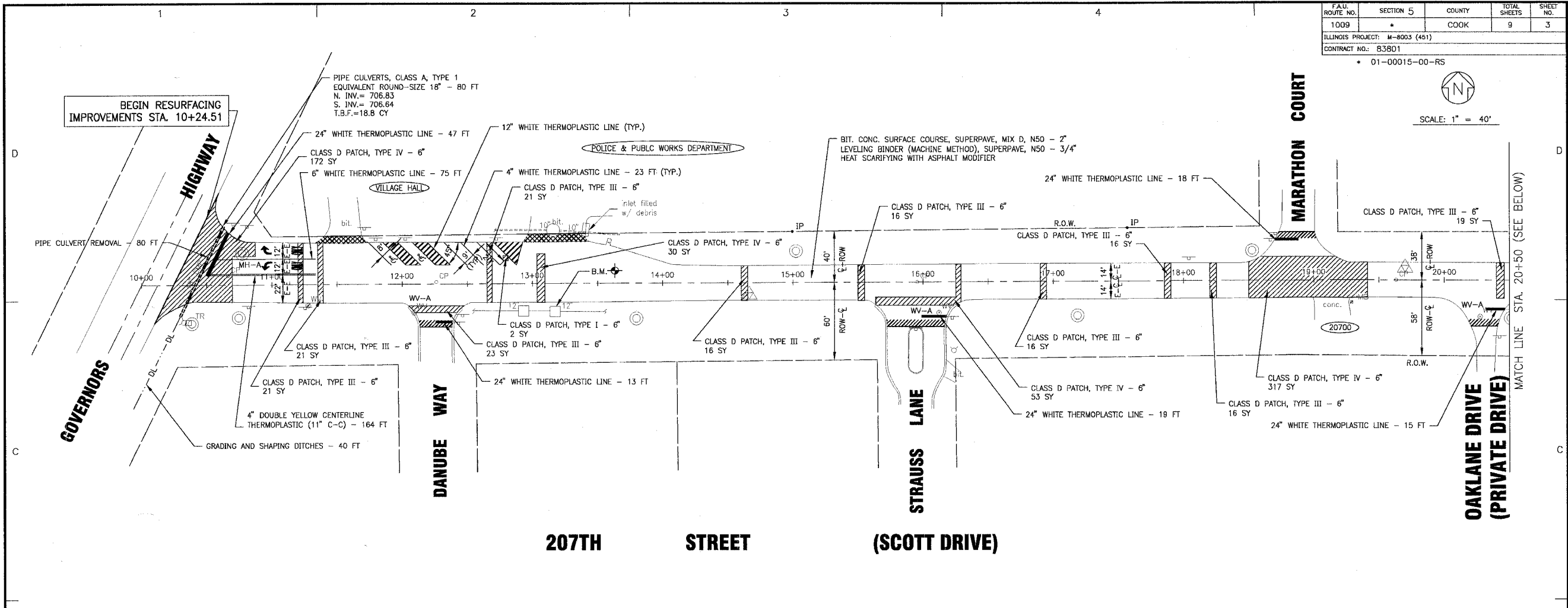
CLIENT

**VILLAGE OF OLYMPIA FIELDS**  
ILLINOIS  
207TH STREET STP.  
LAPP IMPROVEMENTS  
CRAWFORD TO KEDZIE AVENUE

SHEET TITLE

**207TH STREET**  
**STA. 10+24.51 TO STA. 31+50**  
**ROADWAY & PAVEMENT MARKING**  
**PLAN**

**3 OF 9**



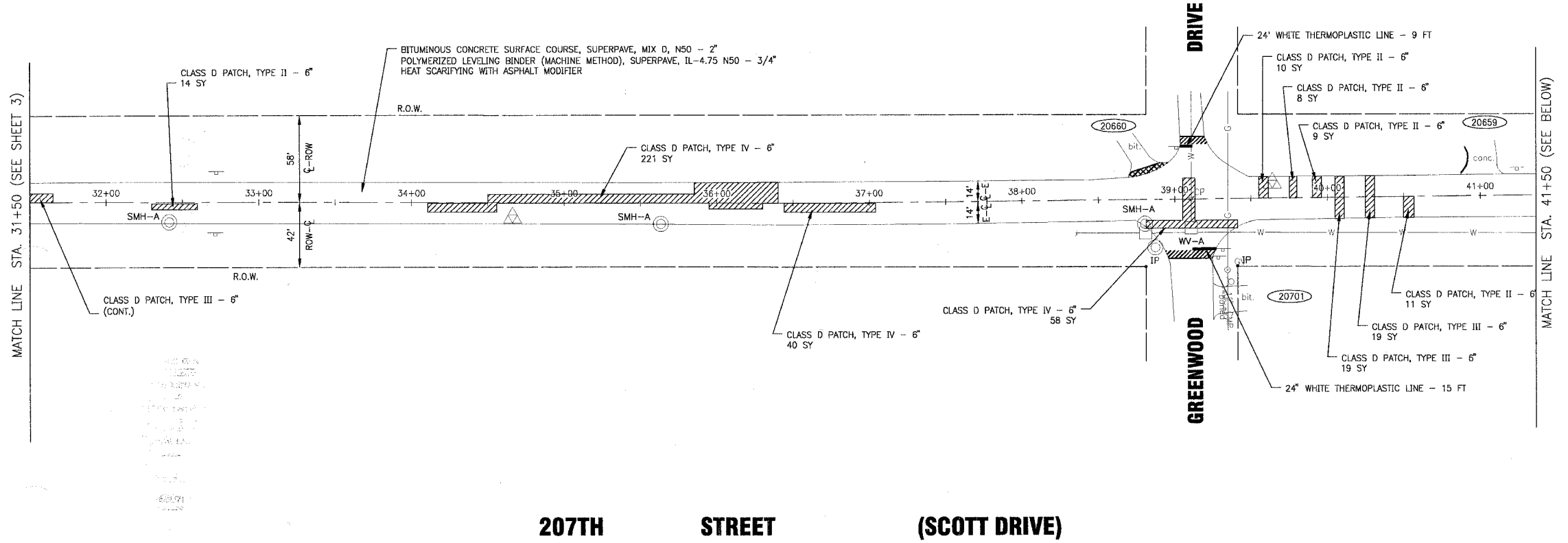
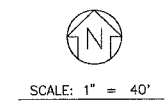
Copyright © 2005, by Baxter & Woodman, Inc. All rights reserved. No part of this drawing may be reproduced without the written permission of Baxter & Woodman, Inc.

|                                |         |        |              |           |
|--------------------------------|---------|--------|--------------|-----------|
| F.A.U. ROUTE NO.               | SECTION | COUNTY | TOTAL SHEETS | SHEET NO. |
| 1009                           | 5       | COOK   | 9            | 4         |
| ILLINOIS PROJECT: M-8003 (451) |         |        |              |           |
| CONTRACT NO.: 83801            |         |        |              |           |
| * 01-00015-00-RS               |         |        |              |           |

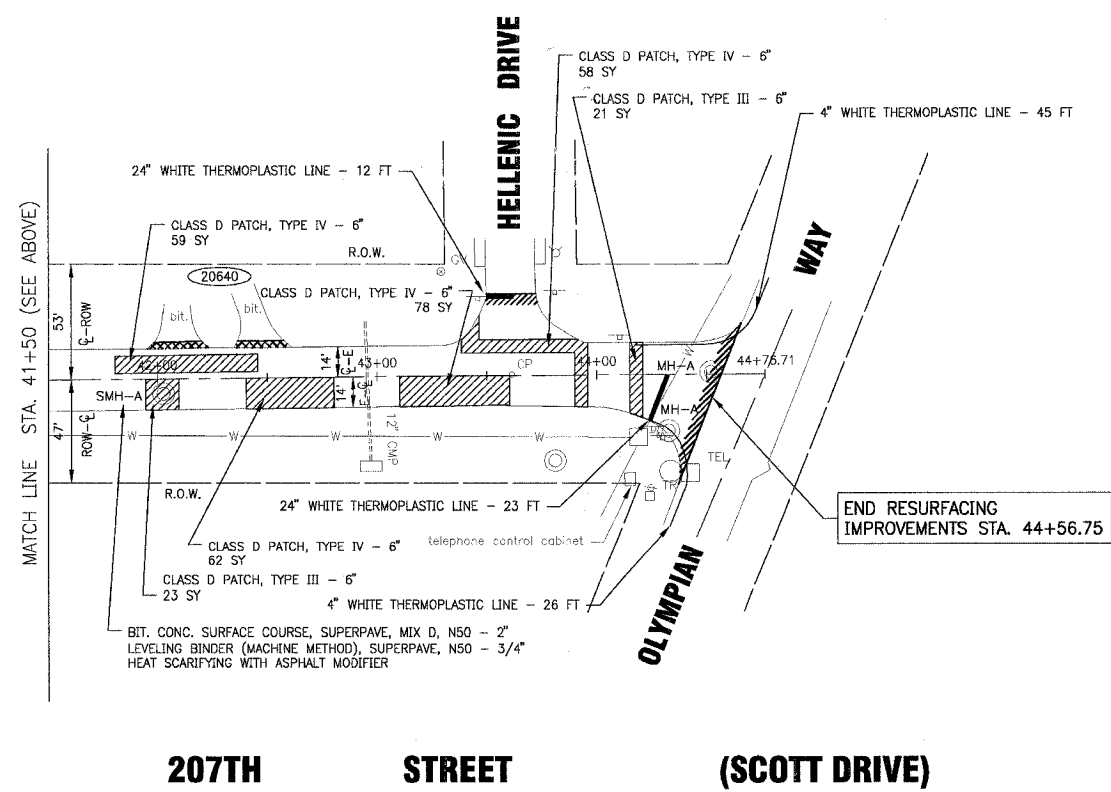
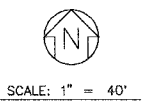
**BAXTER & WOODMAN**  
Consulting Engineers

*Baxter & Woodman*  
Crystal Lake, Illinois 815.459.1260  
Burlington, Wisconsin 262.763.7834  
Mokena, Illinois 708.478.2090  
DeKalb, Illinois 815.787.9111  
Greystake, Illinois 847.223.5088  
www.baxwood.com

CONSULTANTS



**207TH STREET (SCOTT DRIVE)**



**207TH STREET (SCOTT DRIVE)**

| NO. | DATE     | DESCRIPTION       |
|-----|----------|-------------------|
| 1   | 07/09/04 | PER IDOT COMMENTS |

REFER TO EQUIPMENT MANUFACTURER'S SHOP DRAWING

PLAN SHEET DESIGNATION

|   |                     |
|---|---------------------|
| C | COVER               |
| G | GENERAL             |
| H | HAZARDOUS MATERIALS |
| C | CIVIL               |
| L | LANDSCAPE           |
| S | STRUCTURAL          |
| A | ARCHITECTURAL       |
| I | INTERIORS           |
| Q | EQUIPMENT           |
| F | FIRE PROTECTION     |
| P | PLUMBING            |
| M | MECHANICAL          |
| E | ELECTRICAL          |
| R | RESOURCE            |

|               |                |
|---------------|----------------|
| PROJECT NO:   | 010146         |
| DWG FILE:     | 010146APLN.DWG |
| SCALE:        | AS SHOWN       |
| DRAWING DATE: | 11-12-03       |
| DESIGNED BY:  | JER            |
| DRAWN BY:     | TJB            |
| CHECKED BY:   | LDH            |
| PLOTTED BY:   | TJB 05-19-05   |

CLIENT

**VILLAGE OF OLYMPIA FIELDS  
ILLINOIS  
207TH STREET STP.  
LAPP IMPROVEMENTS  
CRAWFORD TO KEDZIE AVENUE**

SHEET TITLE

**207TH STREET  
STA. 31+50 TO STA. 44+56.75  
ROADWAY & PAVEMENT MARKING  
PLAN**

Copyright © 2005, by Baxter & Woodman, Inc.  
Scale: 1" = 40' - 01-00015-00-RS











