

SMITH ENGINEERING CONSULTANTS, INC.
 CIVIL/STRUCTURAL ENGINEERS AND SURVEYORS
 4500 FRANK PARKWAY, SUITE 201
 MCHENRY, ILLINOIS 60050
 PH: 815-385-1770 FAX: 815-385-1781
 www.smithengineering.com E-MAIL: sec@smithengineering.com
 * MCHENRY * HUNTER * YORKVILLE
 ILLINOIS PROFESSIONAL DESIGN FIRM # 184-000108

STATE OF ILLINOIS
 DEPARTMENT OF TRANSPORTATION
 DIVISION OF HIGHWAYS

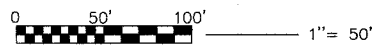
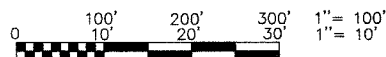
**PLANS FOR PROPOSED
 FEDERAL AID HIGHWAY**

CH. 70 HARLEM AVENUE/DRECKSLER ROAD
 OVER BLACK WALNUT CREEK
 SECTION NO. 01-00139-02-BR
 BRIDGE SUPERSTRUCTURE REPLACEMENT
 PROJECT NO. BROS D001 607
 STRUCTURE NUMBER 099-3091

WILL COUNTY
 C-91-148-01
 R 12 E, R 13 E

FOR INDEX OF SHEETS, SEE SHEET NO. 2

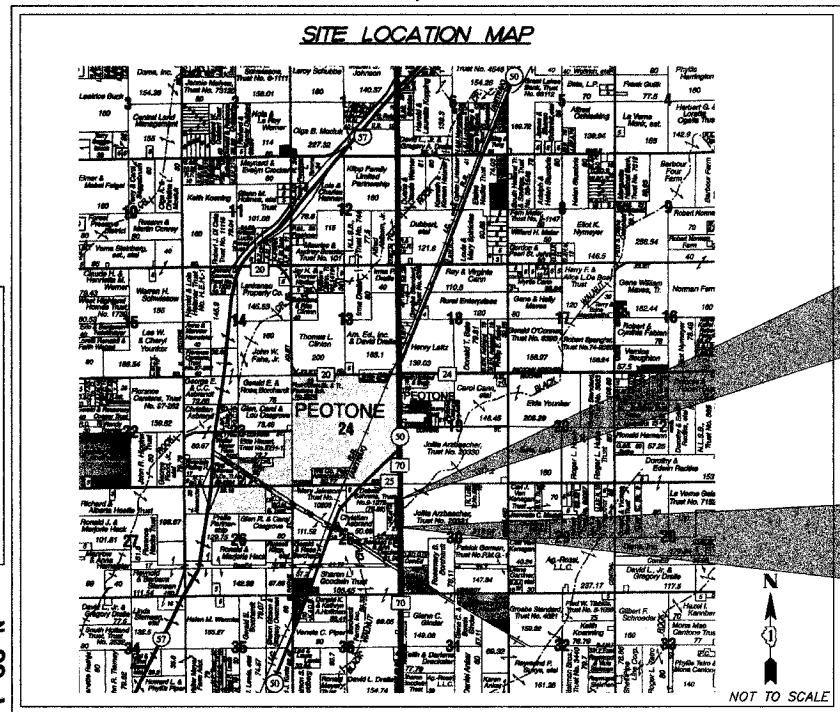
SCALES
 PLAN: 1" = 20'
 PROFILE HORIZ.: 1" = 20'
 PROFILE VERT.: 1" = 5'
 CROSS SECTIONS HORIZ.: 1" = 2'
 CROSS SECTIONS VERT.: 1" = 5'



FULL SIZE PLANS HAVE BEEN PREPARED USING STANDARD ENGINEERING SCALES, REDUCED SIZED PLANS WILL NOT CONFORM TO STANDARD SCALES, IN MAKING MEASUREMENTS ON REDUCED PLANS, THE ABOVE SCALES MAY BE USED.

PROJECT LOCATED IN
 UNINCORPORATED WILL COUNTY

STRUCTURE INFORMATION
 EXISTING AND PROPOSED STRUCTURE IS SINGLE SPAN (48'-8 1/2") REMOVE EXISTING PPC DECK BEAM SUPERSTRUCTURE AND REPLACE WITH A 43'-2" WIDE SUPERSTRUCTURE CONSISTING OF A CONCRETE DECK ON STEEL WIDE FLANGE BEAMS. EXISTING SUBSTRUCTURE UNITS TO BE MODIFIED AND RE-USED. SN 099-3091



WILL/PEOTONE TOWNSHIP (RANGE LINE)
 T 33 N
 GROSS LENGTH OF PROJECT = 1,347 FEET = 0.255 MILES
 NET LENGTH OF PROJECT = 1,347 FEET = 0.255 MILES

FUNCTIONAL CLASSIFICATION
 LOCAL ROAD, (NON-URBAN)

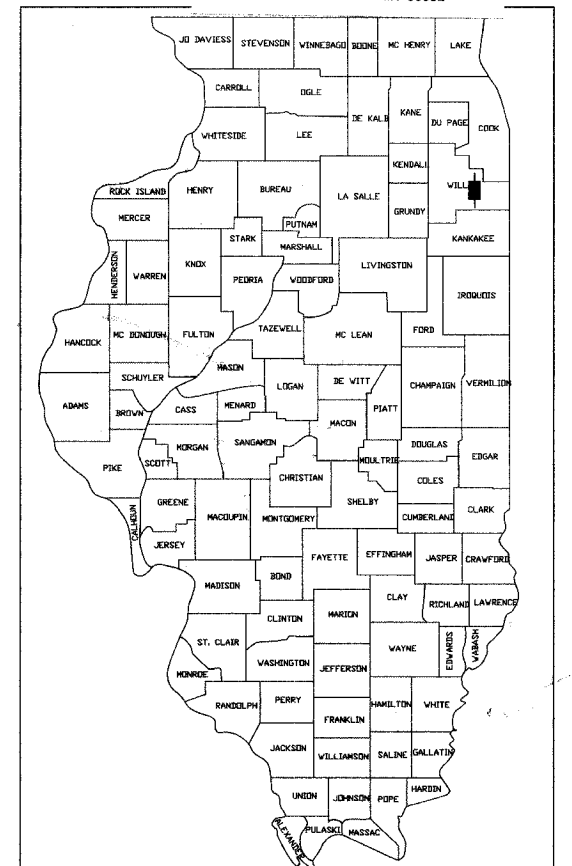
DESIGN SPEED
 HARLEM AVENUE: 55 MPH

SPEED LIMIT
 HARLEM AVENUE: 55 MPH

TRAFFIC DATA
 HARLEM AVENUE: 1,207 (2002)
 13,500 (2025)

F.A.U. RTE.	SECTION	COUNTY	TOTAL SHEETS	SHEET NO.
3762	01-00139-02-BR	WILL	35	1
PROJECT NO. BROS D001 607				
FED. ROAD DIST. NO. 1 ILLINOIS HIGHWAY PROJECT 1				

CONTRACT NUMBER 83802



LOCATION OF SECTION INDICATED THUS: - [black rectangle]

STATE OF ILLINOIS
 DEPARTMENT OF TRANSPORTATION
 DIVISION OF HIGHWAYS

APPROVED MAY 20 2005
 [Signature]
 LOCAL AGENCY OFFICIAL

APPROVED MAY 20 2005
 [Signature]
 LOCAL ROAD ENGINEER

APPROVED June 1, 2005
 [Signature]
 DEPUTY DIRECTOR OF HIGHWAYS
 REGION ONE ENGINEER

PRINTED BY AUTHORITY OF THE
 STATE OF ILLINOIS

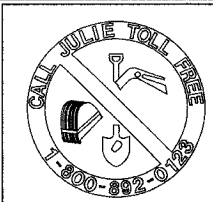
PROFESSIONAL ENGINEER'S SIGN & SEAL

[Signature]
 JEFF L. PISHA P.E.
 5-23-2005

DATE: 11-30-2005
 LICENSE EXPIRES:

SEAL

FEDERAL AID DESIGN ENGINEER: JESSICA MILLER (847) 705-4487



CALL JULIE 1-800-892-0123
 WITH THE FOLLOWING:
 COUNTY WILL
 CITY-TOWNSHIP WILL / PEOTONE
 SEC. & 1/4 SEC. NO.# 25, NE 1/4

48 hours before you dig
 (Excluding Sat., Sun. & Holidays)

CONTRACT NO. 83802