

F.A.P. RTE.	SECTION	COUNTY	TOTAL SHEETS	SHEET NO.
3762	01-00139-02-BR	WILL	35	11
STA.	100+00	TO STA.	110+00	
FED. ROAD DIST. NO. 1		ILLINOIS	HIGHWAY PROJECT	
CONTRACT # 83802				



LEGEND:

	NOTES EROSION CONTROL BLANKET
	NOTES MULCH METHOD 1
	NOTES PERIMETER EROSION BARRIER
	NOTES TEMPORARY DITCH CHECK
	NOTES FLOW DIRECTION

EROSION CONTROL NOTES:

WORK SHALL BE DONE IN ACCORDANCE WITH HIGHWAY STANDARD 280001 AND DETAILS IN THE PLANS.

THE CONTRACTOR IS RESPONSIBLE FOR INSTALLATION OF ANY ADDITIONAL EROSION CONTROL MEASURES NECESSARY TO PREVENT EROSION AND SEDIMENTATION AS DETERMINED BY THE ENGINEER.

PERIMETER EROSION BARRIER MUST REMAIN IN PLACE UNTIL FINAL STABILIZATION HAS BEEN ESTABLISHED.

ALL EROSION AND SEDIMENT CONTROL MEASURES SHALL BE INSPECTED WEEKLY OR AFTER A ONE-HALF INCH OR GREATER RAINFALL EVENT AND ANY REQUIRED REPAIRS WILL BE MADE.

WATER PUMPED OR OTHERWISE DISCHARGED FROM THE SITE DURING CONSTRUCTION SHALL BE FILTERED AND A MEANS PROVIDED TO REDUCE EROSION.

ANY DISTURBED GROUND SHALL BE PROTECTED WITHIN 7 DAYS WITH EITHER PERMANENT OR TEMPORARY EROSION CONTROL MEASURES.

CONTRACTOR SHALL NOT DISTURB GROUND OUTSIDE THE PERIMETER EROSION BARRIER PRIOR TO COMMENCING LAND-DISTURBING ACTIVITIES IN AREA OTHER THAN INDICATED ON THESE PLANS.

WORK THIS SHEET WITH THE BRIDGE PLANS.

AT ALL TIMES, PERIMETER EROSION BARRIER SHALL BE INSTALLED BETWEEN ALL DISTURBED AREAS AND THE CREEK. PERIMETER BARRIERS SHALL BE INSPECTED AT THE END OF EACH WORK DAY AND PRIOR TO ANY RAIN EVENTS.

BUILDING MATERIAL STOCKPILES SHALL BE LOCATED IN AREAS THAT DO NOT HAVE HIGH POTENTIAL FOR CONTRIBUTING SEDIMENTS TO THE CREEK.

CONTRACTOR SHALL REMOVE ANY EXISTING DECK MATERIAL, OR OTHER CONSTRUCTION DEBRIS THAT FALLS INTO THE CREEK DURING DEMOLITION OR CONSTRUCTION.

WORK THIS SHEET AND SHEET 12 WITH THE PAVEMENT MARKING AND RESTORATION PLANS (SHEETS 13-14)

SEQUENCE OF CONSTRUCTION

1. INSTALL PERIMETER EROSION BARRIER AND TEMPORARY DITCH CHECKS.
2. PERFORM BRIDGE SUPERSTRUCTURE DEMOLITION AND RECONSTRUCTION CONCURRENTLY WITH ROADWAY AND SHOULDER RECONSTRUCTION.
3. PERFORM BRIDGE APPROACH PAVEMENT AND SHOULDER RECONSTRUCTION.
4. COMPLETE BRIDGE AND ROADWAY RECONSTRUCTION AND ESTABLISH SEEDING CLASS 2A.

SMITH ENGINEERING CONSULTANTS, INC.
 CIVIL/STRUCTURAL ENGINEERS AND SURVEYORS
 4050 FIRMS PARKWAY, SUITE 201
 MCHENRY, ILLINOIS 60050
 TEL: 815-385-1778 FAX: 815-385-1781
 WWW.SMITHENGINEERING.COM E-MAIL: SEE@SMITHENGINEERING.COM
 MCHENRY HUNTLEY YORKVILLE
 ILLINOIS PROFESSIONAL DESIGN FIRM # 184-000108

ILLINOIS DEPARTMENT OF TRANSPORTATION

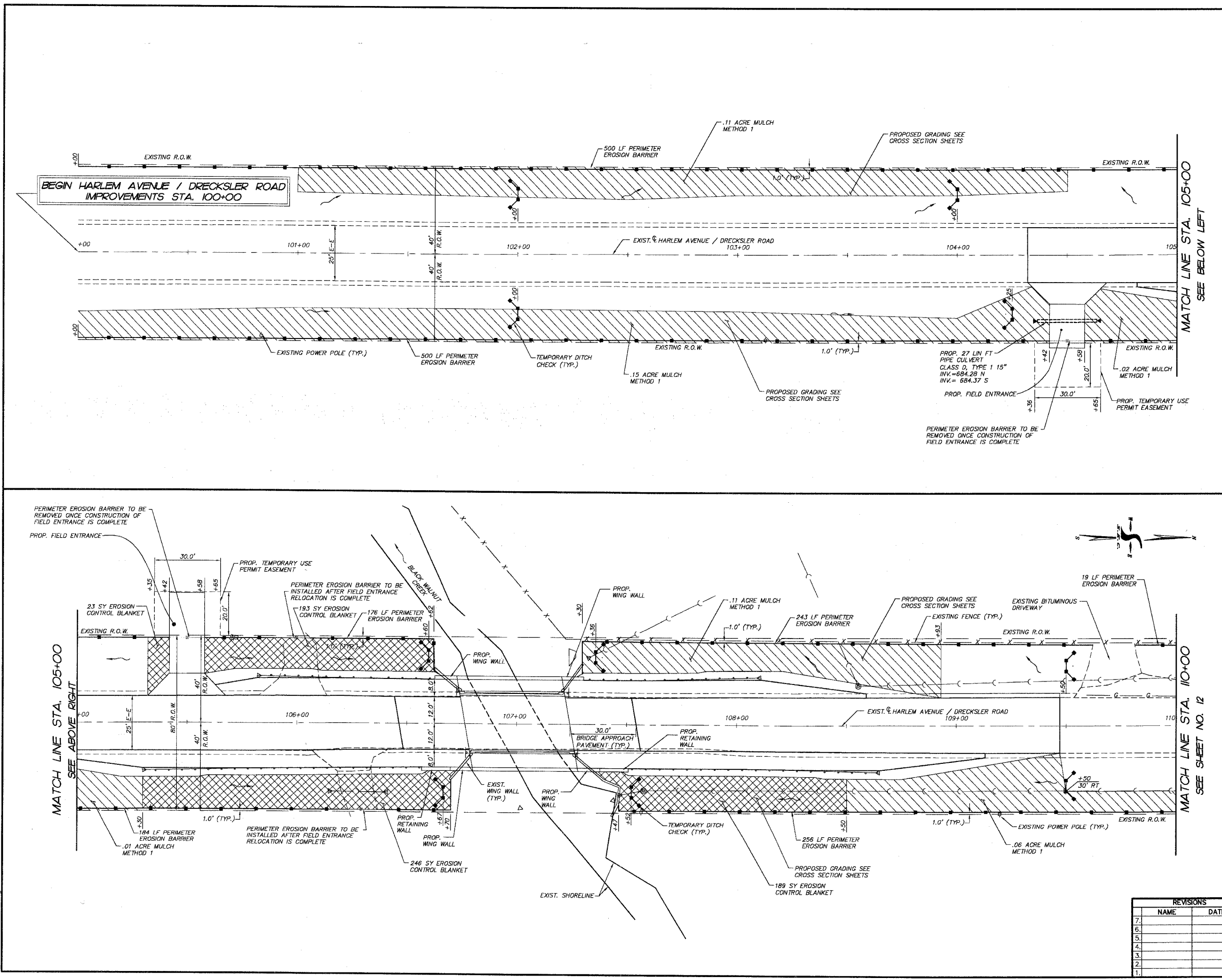
WILL COUNTY DEPARTMENT OF HIGHWAYS
 HARLEM AVENUE/DRECKSLER ROAD
 OVER BLACK WALNUT CREEK
 EROSION CONTROL PLAN

SCALE: 1"=20'
 DATE 5-26-2005

DRAWN BY WJH
 CHECKED BY JLP

REVISIONS

NO.	NAME	DATE
7.		
6.		
5.		
4.		
3.		
2.		
1.		



PLOT FILE: STANDARD
 VIEW: CE-11
 COMP. FILE: 040159-828.DWG