

F.A.P. RTE.	SECTION	COUNTY	TOTAL SHEETS	SHEET NO.
3762	01-00139-02-BR	WILL	35	13
STA. 100+00		TO STA. 110+00		
FED. ROAD DIST. NO. 1		ILLINOIS HIGHWAY PROJECT		
CONTRACT # 83802				

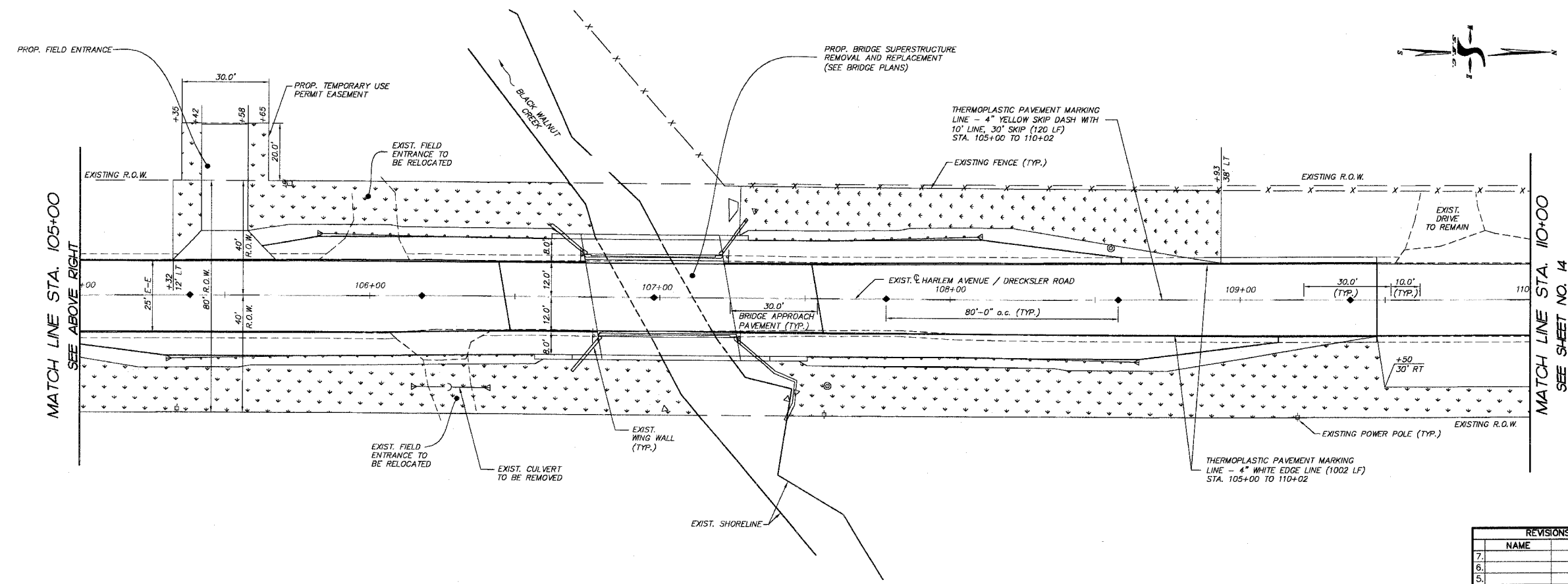
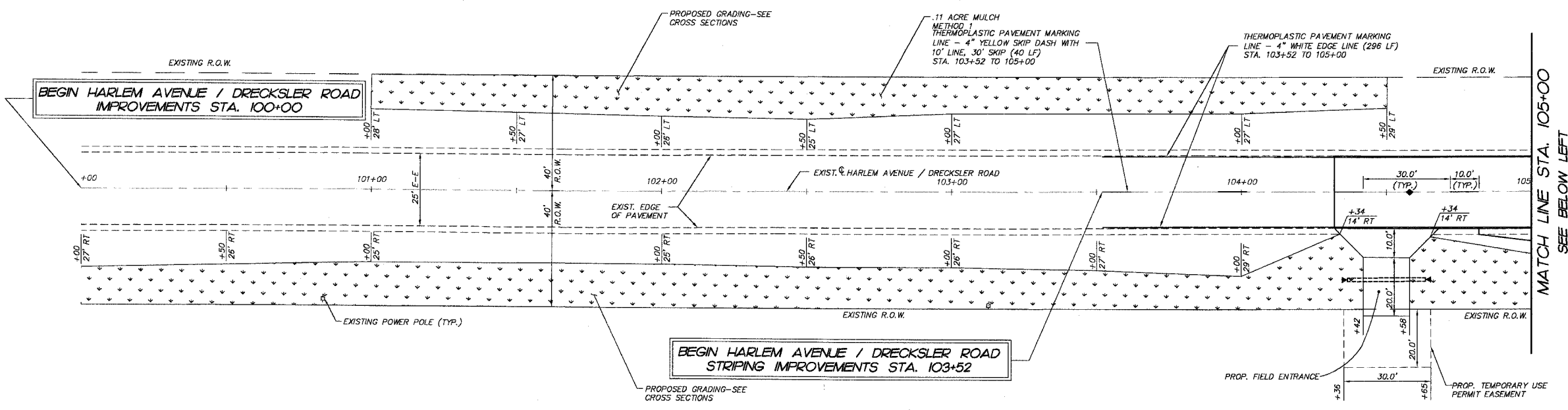


LEGEND

DENOTES TOPSOIL FURNISH AND PLACE, 6" AND SEEDING CLASS 2A

DENOTES RAISED REFLECTIVE PAVEMENT MARKER, TWO-WAY AMBER

AREAS DISTURBED OUTSIDE LIMITS SHOWN SHALL BE RESTORED BY THE CONTRACTOR WITH TOPSOIL FURNISH AND PLACE 6", SEEDING CLASS 2A, AND EROSION CONTROL BLANKET WITH NO ADDITIONAL COMPENSATION DUE TO THE CONTRACTOR FOR THIS WORK.



REVISIONS	
NO.	DATE
7.	
6.	
5.	
4.	
3.	
2.	
1.	

SMITH ENGINEERING CONSULTANTS, INC.
 CIVIL/STRUCTURAL ENGINEERS AND SURVEYORS
 4500 PRIME PARKWAY, SUITE 201
 MCHENRY, ILLINOIS 60050
 PH: 815-395-1778 FAX: 815-395-1781
 www.smithengineering.com E-Mail: see@smithengineering.com
 * MCHENRY * HUNTLEY * YORKVILLE
 ILLINOIS PROFESSIONAL DESIGN FIRM # 184-000108

ILLINOIS DEPARTMENT OF TRANSPORTATION

WILL COUNTY DEPARTMENT OF HIGHWAYS
 HARLEM AVENUE/DRECKSLER ROAD
 OVER BLACK WALNUT CREEK
 PAVEMENT MARKING AND RESTORATION PLAN

SCALE: 1"=20'
 DATE 5-26-2005

DRAWN BY WJH
 CHECKED BY JLP

PILOT FILE STANDARD
 VER. # 02-13
 COMP. FILE 040159-605.dwg