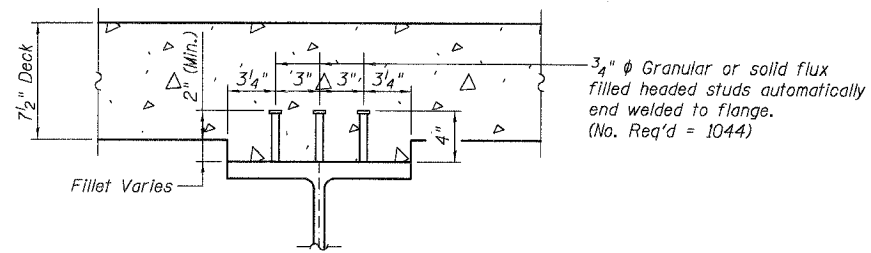
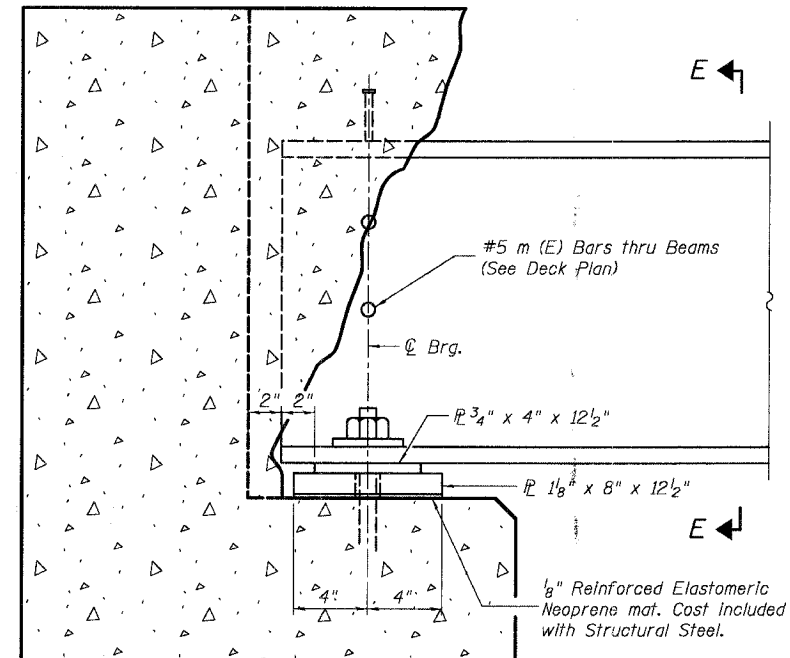


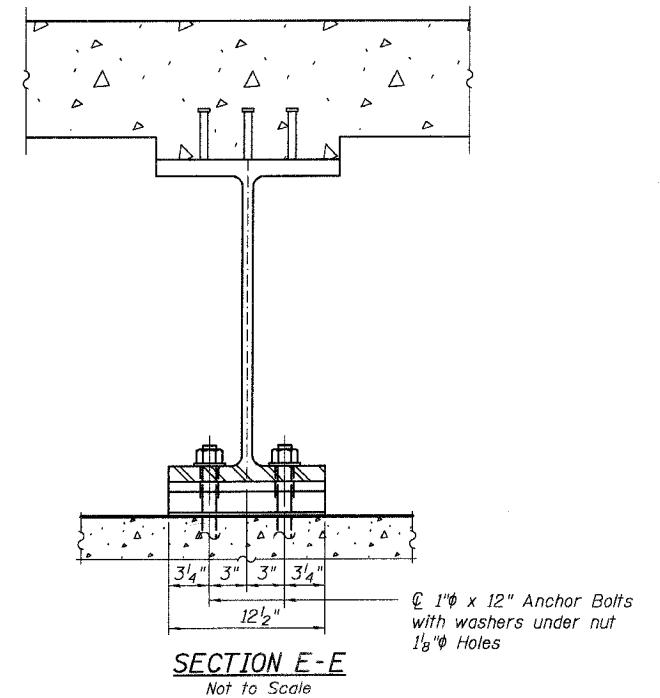
**BEAM ELEVATION**  
Not to Scale



**SECTION D-D**  
Not to Scale



**BEARING DETAIL**  
Not to Scale



**SECTION E-E**  
Not to Scale

DESIGNED	MGH
CHECKED	RGD
DRAWN	WJH
CHECKED	NRF

- Notes
- "NTR" denotes plates to which Notch Toughness Requirements are applicable.
  - Work this sheet with S-06 and S-08

SMITH ENGINEERING  
CONSULTANTS, INC.  
CIVIL/STRUCTURAL ENGINEERS  
AND SURVEYORS  
www.smithengineering.com  
1301 South Washington Street, Suite 200, Springfield, IL 62761

REVISIONS	
NAME	DATE

ILLINOIS DEPARTMENT OF TRANSPORTATION

Beam Elevation and Bearing Details  
Over Black Walnut Creek  
Will County  
Section 01-00139-02-BR  
SN. 099-3091

DATE 5-26-2005