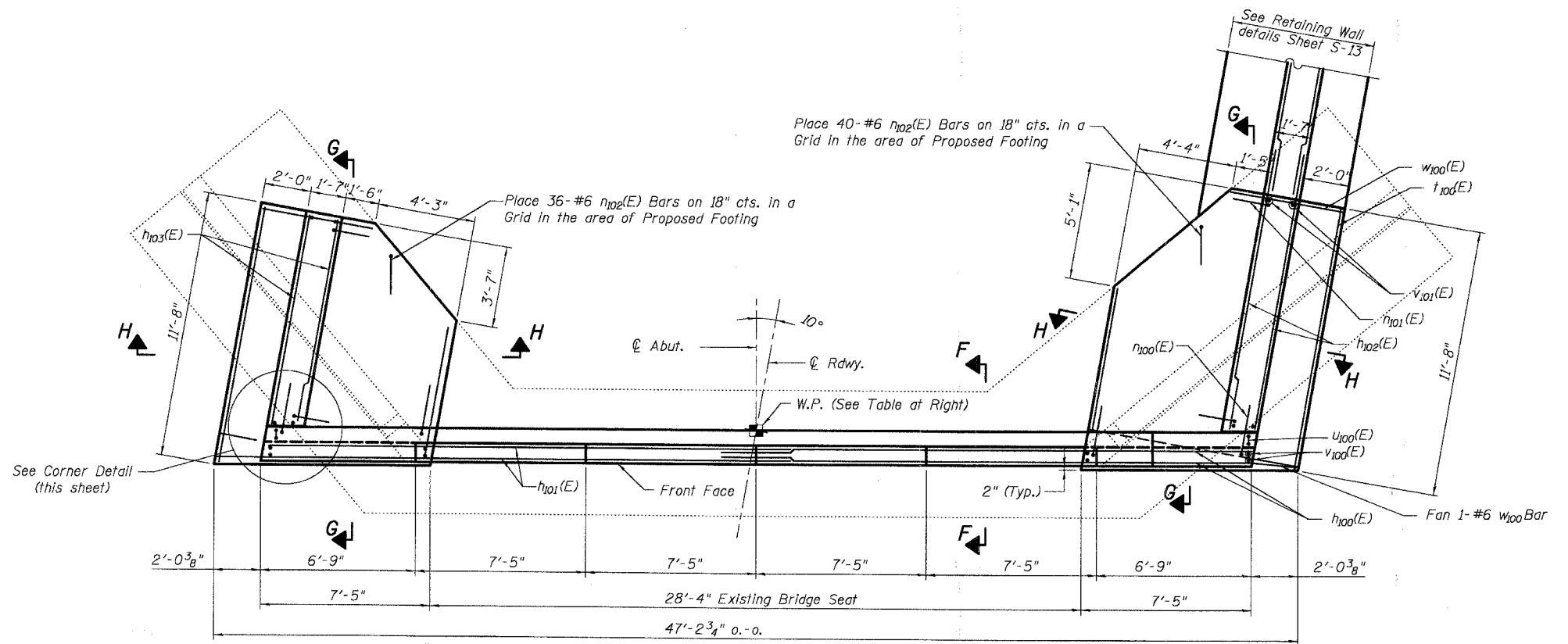


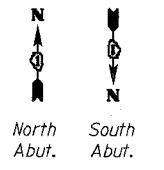
NOTES:

1. Removal of Existing Concrete shall conform to Article 501.03 of the Standard Specifications.
2. Preserve and incorporate 3" length of a minimum of 50% of existing vertical reinforcement in removal area.
3. Preserve and incorporate existing u Bar's located in the Back Wall.
4. Install Epoxy Crack Sealing into narrow cracks located on the inside face of existing abutment walls as directed by the Resident Engineer..
5. Install Formed Concrete Repair (Depth less than 5") on the inside face of the existing abutment walls as directed by the Resident Engineer.
6. Work this sheet with S-12.



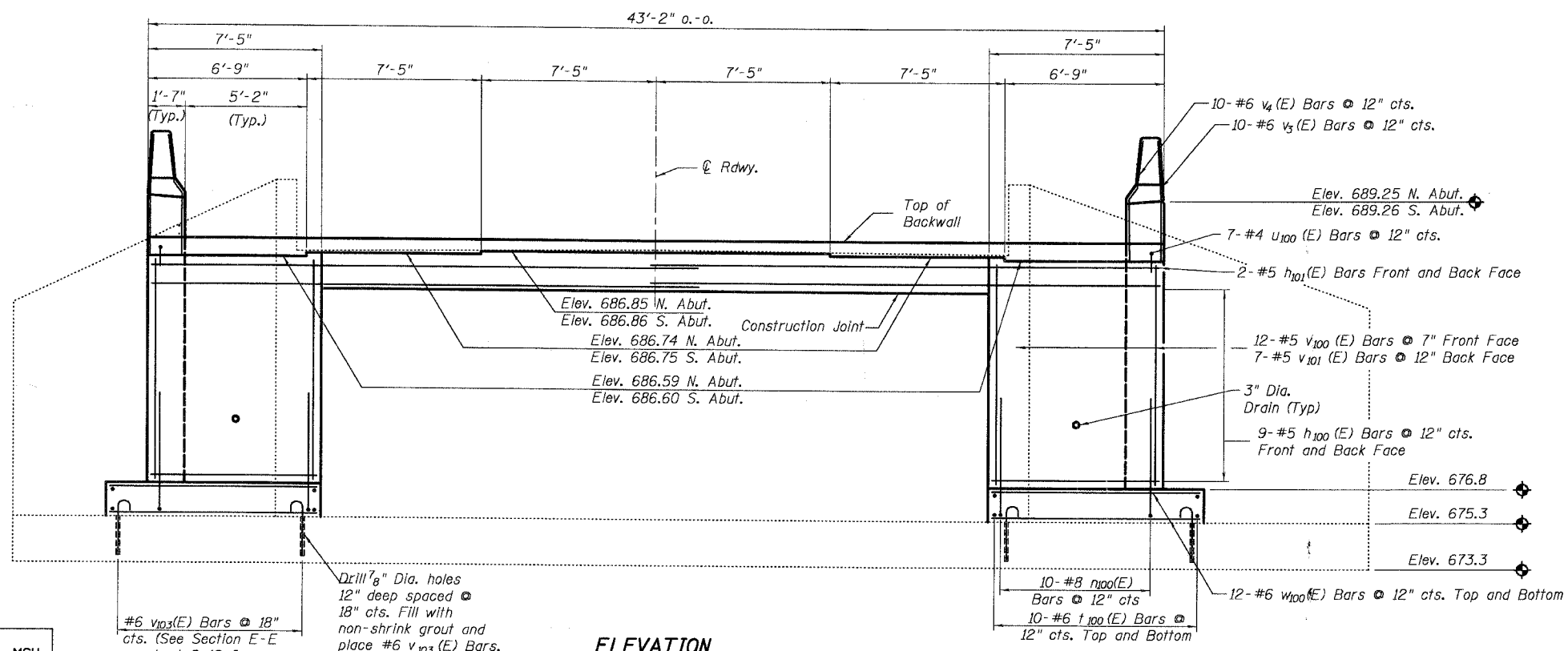
PLAN

Not to Scale



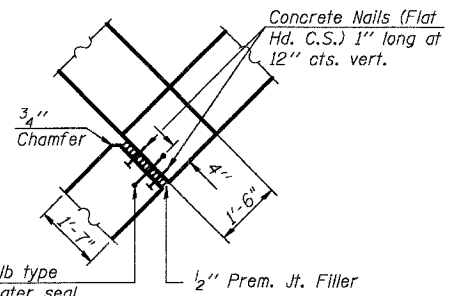
WORK POINT TABLE

Work Point	Harlem Ave Station	Offset
1	106+76.00	0' R
2	107+24.70	0' R



ELEVATION

Not to Scale



CORNER DETAIL

DESIGNED	MGH
CHECKED	RGD
DRAWN	WJH
CHECKED	NRF

SMITH ENGINEERING CONSULTANTS, INC.
CIVIL, STRUCTURAL, ELECTRICAL AND SURVEYING
www.smithengineering.com
1-800-368-8646

REVISIONS	
NAME	DATE

ILLINOIS DEPARTMENT OF TRANSPORTATION
Abutment Plan and Elevation
Harlem Avenue/Drecksler Road
Over Black Walnut Creek
Will County
Section 01-00139-02-BR
SN. 099-3091
DATE 5-26-2005