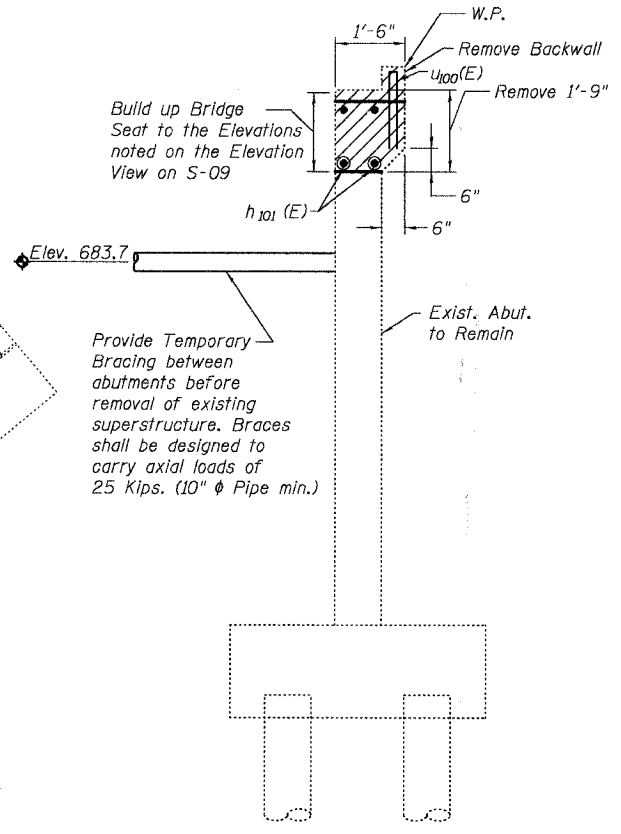
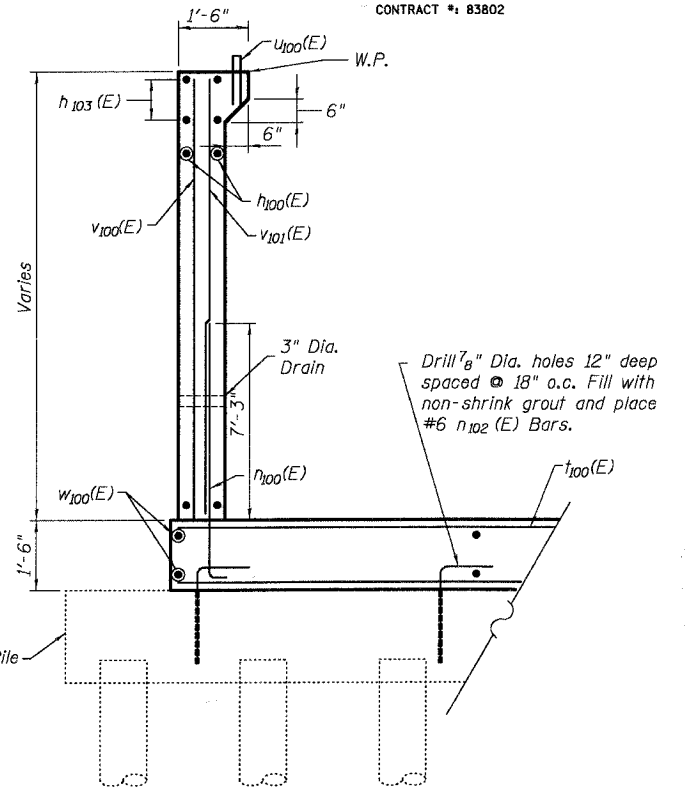


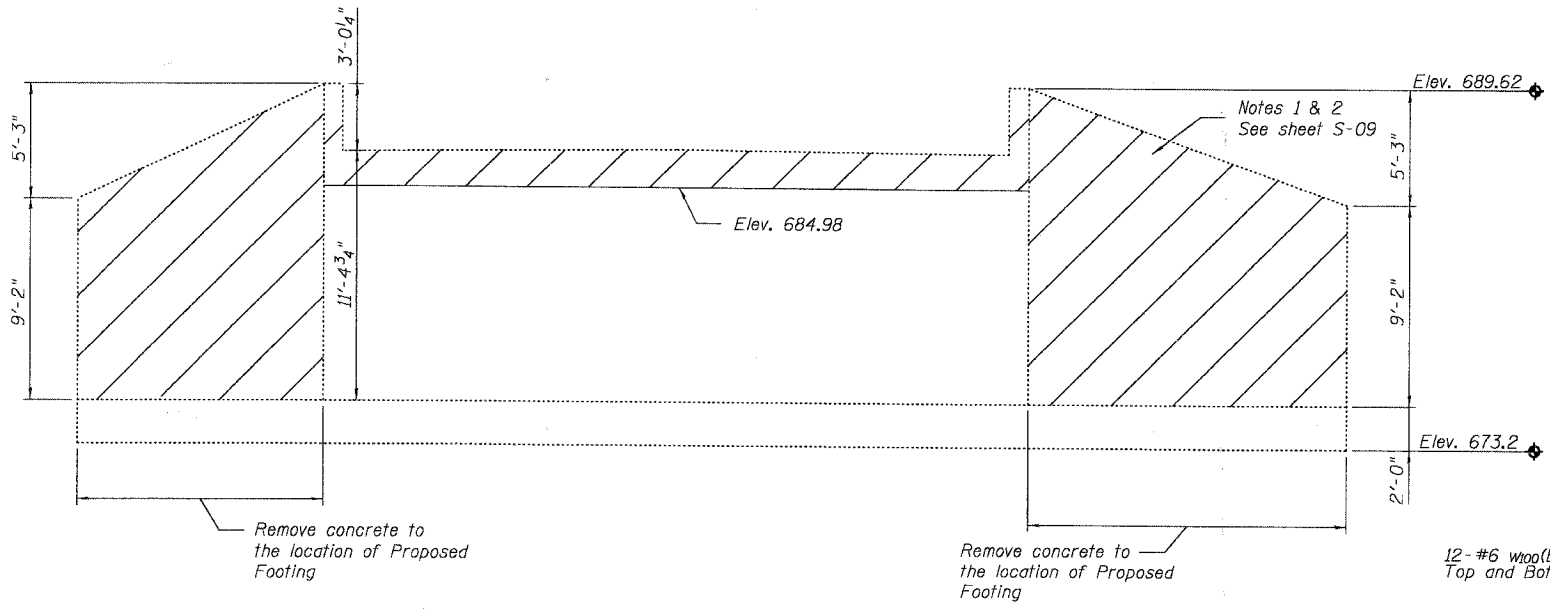
**PLAN OF EXISTING ABUTMENT**  
Not to Scale



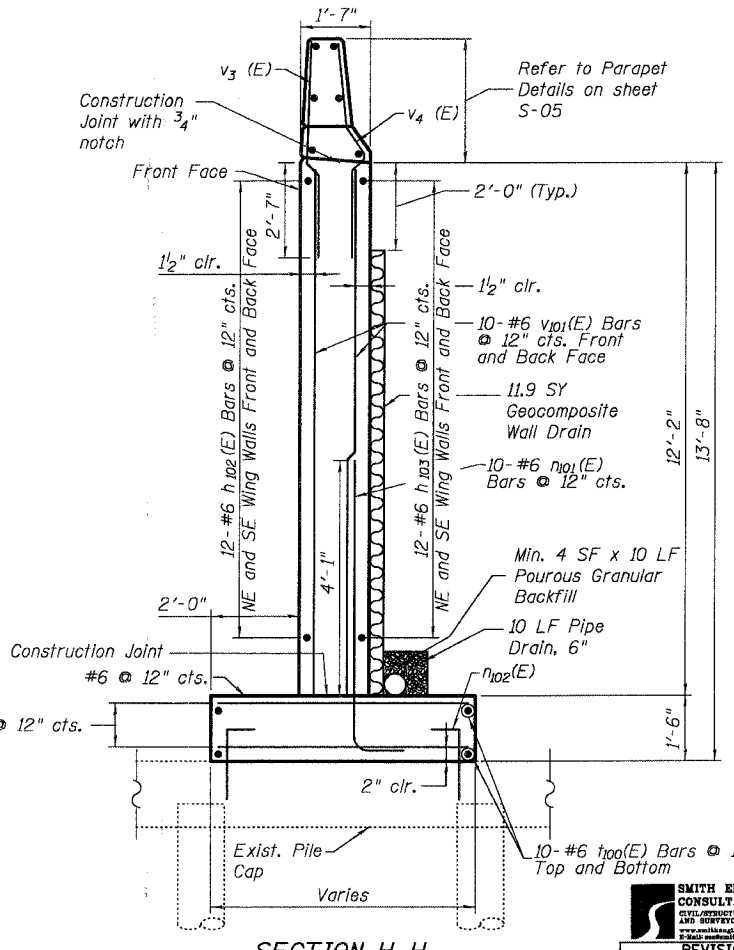
**SECTION F-F**  
Not to Scale



**SECTION G-G**  
Not to Scale



**ELEVATION OF EXISTING ABUTMENT**  
Not to Scale



**SECTION H-H**  
Not to Scale

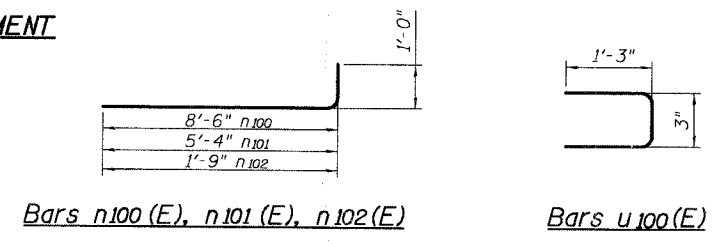
**BILL OF MATERIAL**

Bar	No.	Size	Length (FT)	Shape	
h103(E)	72	# 5	7'-1"		
h103(E)	8	# 7	23'-6"		
h103(E)	96	# 6	12'-3"		
h103(E)	96	# 6	9'-8"		
h103(E)	40	# 8	6'-4"		
h103(E)	28	# 6	2'-9"		
h103(E)	80	# 6	11'-3"		
h103(E)	88	# 4	2'-9"		
h103(E)	48	# 5	9'-9"		
h103(E)	80	# 5	12'-4"		
h103(E)	40	# 6	9'-6"		
h103(E)	40	# 6	4'-5"		
h103(E)	40	# 6	5'-3"		
h103(E)	96	# 6	9'-1"		
Reinforcement Bars, Epoxy Coated				Pound	10,360
Concrete Structures				Cu. Yds.	88.9
Concrete Removal				Cu. Yds.	36.8
Bridge Seat Sealer				Sq. Ft.	64.7
Structure Excavation				Cu. Yd.	102
Epoxy Crack Sealing				Foot	65
Formed Concrete Repair (< 5 in)				Sq. Ft.	5
Pourous Granular Backfill				Cu. Yd.	31.3
Geocomposite Wall Drain				Sq. Yd.	47.5
Pipe Drain				Foot	40

Reinforcement Bars designated (E) shall be Epoxy Coated

DESIGNED	MGH
CHECKED	RGD
DRAWN	WJH
CHECKED	NRF

**LEGEND:**  
Indicates Concrete Removal Area



**SMITH ENGINEERING CONSULTANTS, INC.**  
ILLINOIS DEPARTMENT OF TRANSPORTATION

REVISIONS	
NAME	DATE

**ILLINOIS DEPARTMENT OF TRANSPORTATION**  
Abutment Details  
Harlem Avenue/Drecksler Road  
Over Black Walnut Creek  
Will County  
Section 01-00139-02-BR  
SN. 099-3091  
DATE 5-26-2005