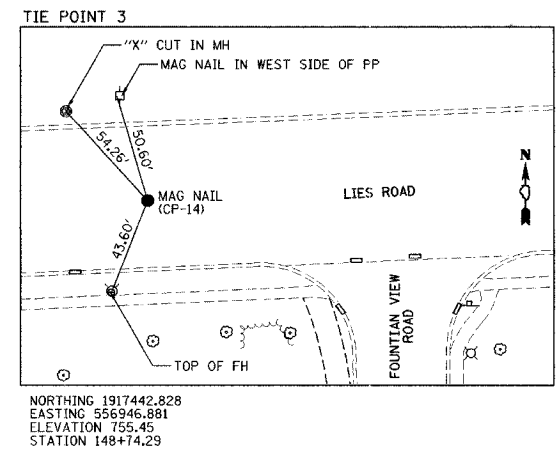
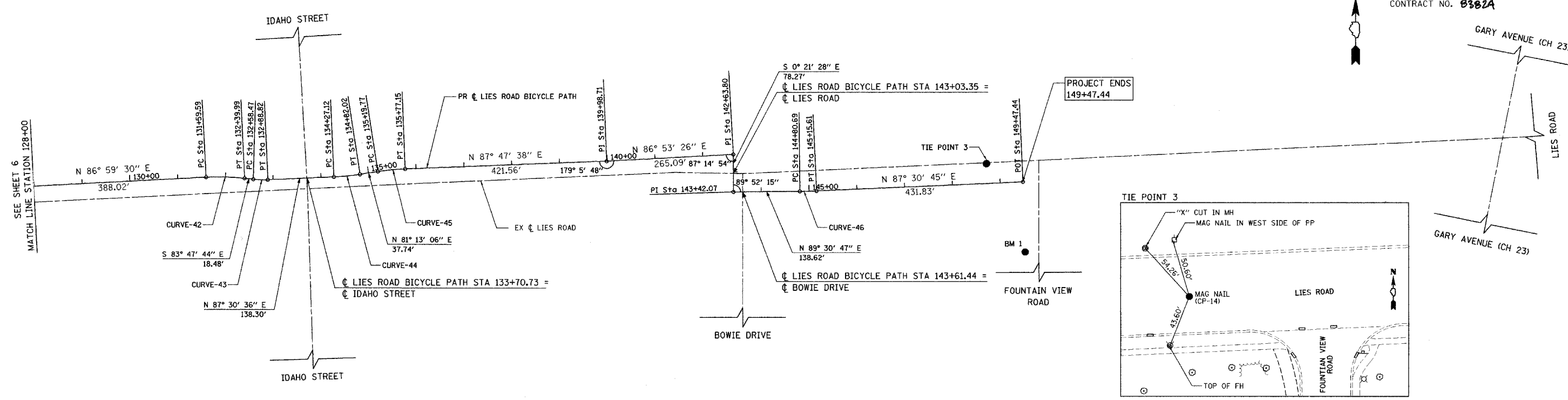


F.A. RTE.	SECTION	COUNTY	TOTAL SHEETS	SHEET NO.
1375	04-00046-00-BT	DU PAGE	29	7
STA. 128+00		TO STA. 149+47.44		
FED. ROAD DIST. NO. 7 ILLINOIS FED. AID PROJECT				
CONTRACT NO. 0382A				



PROPOSED CONSTRUCTION - LIES ROAD BICYCLE PATH CURVE DATA

<p>PROP. CURVE-1 PI STA. = 11+13.84 Δ = 2° 42' 25" (RT) D = 57' 17' 45" R = 100.00' T = 2.36' L = 4.72' E = 0.03' P.C. STA. = 11+11.48 P.T. STA. = 11+16.20</p>	<p>PROP. CURVE-2 PI STA. = 19+22.96 Δ = 6° 20' 23" (LT) D = 19' 05' 55" R = 300.00' T = 16.61' L = 33.19' E = 0.46' P.C. STA. = 19+06.35 P.T. STA. = 19+39.54</p>	<p>PROP. CURVE-3 PI STA. = 20+18.13 Δ = 6° 14' 47" (RT) D = 19' 05' 55" R = 300.00' T = 16.37' L = 32.71' E = 0.45' P.C. STA. = 20+01.76 P.T. STA. = 20+34.47</p>	<p>PROP. CURVE-4 PI STA. = 20+91.63 Δ = 7° 55' 39" (RT) D = 19' 05' 55" R = 300.00' T = 20.79' L = 41.51' E = 0.72' P.C. STA. = 20+70.84 P.T. STA. = 21+12.35</p>	<p>PROP. CURVE-5 PI STA. = 21+82.61 Δ = 5° 41' 39" (LT) D = 19' 05' 55" R = 300.00' T = 14.92' L = 29.81' E = 0.37' P.C. STA. = 21+67.69 P.T. STA. = 21+97.51</p>	<p>PROP. CURVE-6 PI STA. = 23+84.82 Δ = 14° 37' 18" (LT) D = 57' 17' 45" R = 100.00' T = 12.83' L = 25.52' E = 0.82' P.C. STA. = 22+71.99 P.T. STA. = 22+97.51</p>	<p>PROP. CURVE-7 PI STA. = 23+50.67 Δ = 12° 23' 22" (RT) D = 57' 17' 45" R = 100.00' T = 10.85' L = 21.62' E = 0.59' P.C. STA. = 23+39.82 P.T. STA. = 23+61.44</p>	<p>PROP. CURVE-8 PI STA. = 26+91.86 Δ = 9° 31' 52" (RT) D = 57' 17' 45" R = 100.00' T = 8.34' L = 16.63' E = 0.35' P.C. STA. = 26+83.53 P.T. STA. = 27+00.16</p>	<p>PROP. CURVE-9 PI STA. = 27+39.72 Δ = 10° 09' 01" (LT) D = 57' 17' 45" R = 100.00' T = 8.88' L = 17.72' E = 0.39' P.C. STA. = 27+30.84 P.T. STA. = 27+48.55</p>	<p>PROP. CURVE-10 PI STA. = 28+78.39 Δ = 12° 38' 26" (LT) D = 57' 17' 45" R = 100.00' T = 11.08' L = 22.06' E = 0.61' P.C. STA. = 28+67.32 P.T. STA. = 28+89.38</p>	<p>PROP. CURVE-11 PI STA. = 29+17.48 Δ = 13° 19' 33" (RT) D = 57' 17' 45" R = 100.00' T = 11.68' L = 23.26' E = 0.68' P.C. STA. = 29+05.80 P.T. STA. = 29+29.05</p>	<p>PROP. CURVE-12 PI STA. = 37+01.48 Δ = 0° 42' 28" (RT) D = 1' 54' 35" R = 3,000.00' T = 18.53' L = 37.05' E = 0.08' P.C. STA. = 36+82.95 P.T. STA. = 37+20.00</p>	<p>PROP. CURVE-13 PI STA. = 47+15.70 Δ = 13° 37' 12" (RT) D = 57' 17' 45" R = 100.00' T = 11.94' L = 23.77' E = 0.71' P.C. STA. = 47+03.75 P.T. STA. = 47+27.53</p>
<p>PROP. CURVE-14 PI STA. = 47+61.60 Δ = 13° 34' 58" (LT) D = 57' 17' 45" R = 100.00' T = 11.91' L = 23.71' E = 0.71' P.C. STA. = 47+49.70 P.T. STA. = 47+73.40</p>	<p>PROP. CURVE-15 PI STA. = 48+59.10 Δ = 13° 09' 23" (LT) D = 57' 17' 45" R = 100.00' T = 11.53' L = 22.96' E = 0.66' P.C. STA. = 48+47.57 P.T. STA. = 48+70.53</p>	<p>PROP. CURVE-16 PI STA. = 49+07.02 Δ = 13° 07' 08" (RT) D = 57' 17' 45" R = 100.00' T = 11.50' L = 22.90' E = 0.66' P.C. STA. = 48+95.53 P.T. STA. = 49+18.42</p>	<p>PROP. CURVE-17 PI STA. = 57+51.96 Δ = 18° 20' 36" (RT) D = 57' 17' 45" R = 100.00' T = 16.15' L = 32.02' E = 1.30' P.C. STA. = 57+35.82 P.T. STA. = 57+67.83</p>	<p>PROP. CURVE-18 PI STA. = 58+01.69 Δ = 18° 04' 39" (LT) D = 57' 17' 45" R = 100.00' T = 15.91' L = 31.55' E = 1.26' P.C. STA. = 57+85.78 P.T. STA. = 58+17.33</p>	<p>PROP. CURVE-19 PI STA. = 60+73.06 Δ = 12° 24' 37" (LT) D = 57' 17' 45" R = 100.00' T = 10.87' L = 21.66' E = 0.59' P.C. STA. = 60+62.19 P.T. STA. = 60+83.85</p>	<p>PROP. CURVE-20 PI STA. = 61+53.56 Δ = 12° 09' 10" (RT) D = 57' 17' 45" R = 100.00' T = 10.65' L = 21.21' E = 0.57' P.C. STA. = 61+42.92 P.T. STA. = 61+64.13</p>	<p>PROP. CURVE-21 PI STA. = 68+41.65 Δ = 11° 51' 54" (RT) D = 57' 17' 45" R = 100.00' T = 10.39' L = 20.71' E = 0.54' P.C. STA. = 68+31.26 P.T. STA. = 68+51.97</p>	<p>PROP. CURVE-22 PI STA. = 68+94.93 Δ = 11° 44' 16" (LT) D = 57' 17' 45" R = 100.00' T = 10.28' L = 20.49' E = 0.53' P.C. STA. = 68+84.66 P.T. STA. = 69+05.14</p>	<p>PROP. CURVE-23 PI STA. = 69+88.87 Δ = 13° 06' 58" (LT) D = 57' 17' 45" R = 100.00' T = 11.50' L = 22.89' E = 0.66' P.C. STA. = 69+77.38 P.T. STA. = 70+00.27</p>	<p>PROP. CURVE-24 PI STA. = 70+38.63 Δ = 12° 14' 43" (RT) D = 57' 17' 45" R = 100.00' T = 10.73' L = 21.37' E = 0.57' P.C. STA. = 70+27.90 P.T. STA. = 70+49.27</p>	<p>PROP. CURVE-25 PI STA. = 86+20.16 Δ = 12° 07' 03" (RT) D = 57' 17' 45" R = 100.00' T = 10.61' L = 21.15' E = 0.55' P.C. STA. = 86+09.55 P.T. STA. = 86+30.70</p>	<p>PROP. CURVE-26 PI STA. = 86+76.77 Δ = 12° 19' 47" (LT) D = 38' 11' 50" R = 150.00' T = 16.20' L = 32.28' E = 0.87' P.C. STA. = 86+60.57 P.T. STA. = 86+92.85</p>
<p>PROP. CURVE-27 PI STA. = 87+82.65 Δ = 13° 31' 04" (LT) D = 57' 17' 45" R = 100.00' T = 11.85' L = 23.59' E = 0.70' P.C. STA. = 87+70.80 P.T. STA. = 87+94.39</p>	<p>PROP. CURVE-28 PI STA. = 88+27.63 Δ = 13° 46' 50" (RT) D = 57' 17' 45" R = 100.00' T = 12.08' L = 24.05' E = 0.73' P.C. STA. = 88+15.55 P.T. STA. = 88+39.60</p>	<p>PROP. CURVE-29 PI STA. = 89+65.91 Δ = 3° 45' 11" (LT) D = 5° 40' 22" R = 1,010.00' T = 33.09' L = 66.16' E = 0.54' P.C. STA. = 89+32.82 P.T. STA. = 89+98.98</p>	<p>PROP. CURVE-30 PI STA. = 107+80.98 Δ = 3° 15' 19" (RT) D = 11° 27' 33" R = 500.00' T = 14.21' L = 28.41' E = 0.54' P.C. STA. = 107+66.77 P.T. STA. = 107+95.18</p>	<p>PROP. CURVE-31 PI STA. = 110+17.61 Δ = 2° 52' 07" (LT) D = 11° 27' 33" R = 500.00' T = 12.52' L = 25.03' E = 0.16' P.C. STA. = 110+05.09 P.T. STA. = 110+30.12</p>	<p>PROP. CURVE-32 PI STA. = 115+83.79 Δ = 8° 59' 37" (LT) D = 57' 17' 45" R = 100.00' T = 7.86' L = 15.70' E = 0.30' P.C. STA. = 115+75.93 P.T. STA. = 115+91.63</p>	<p>PROP. CURVE-33 PI STA. = 117+32.70 Δ = 8° 51' 14" (RT) D = 57' 17' 45" R = 100.00' T = 7.74' L = 15.45' E = 0.30' P.C. STA. = 117+20.70 P.T. STA. = 117+46.63</p>	<p>PROP. CURVE-34 PI STA. = 117+78.68 Δ = 9° 07' 25" (RT) D = 57' 17' 45" R = 100.00' T = 7.98' L = 15.92' E = 0.32' P.C. STA. = 117+70.70 P.T. STA. = 117+86.63</p>	<p>PROP. CURVE-35 PI STA. = 118+14.01 Δ = 9° 07' 25" (LT) D = 57' 17' 45" R = 100.00' T = 7.98' L = 15.92' E = 0.32' P.C. STA. = 118+06.03 P.T. STA. = 118+21.95</p>	<p>PROP. CURVE-36 PI STA. = 119+97.82 Δ = 7° 25' 26" (LT) D = 28° 38' 52" R = 200.00' T = 12.98' L = 25.91' E = 0.42' P.C. STA. = 119+84.85 P.T. STA. = 120+10.76</p>	<p>PROP. CURVE-37 PI STA. = 120+63.48 Δ = 7° 25' 26" (RT) D = 28° 38' 52" R = 200.00' T = 12.98' L = 25.91' E = 0.42' P.C. STA. = 120+50.51 P.T. STA. = 120+76.42</p>	<p>PROP. CURVE-38 PI STA. = 125+35.23 Δ = 5° 39' 40" (RT) D = 28° 38' 52" R = 200.00' T = 9.85' L = 19.76' E = 0.24' P.C. STA. = 125+25.34 P.T. STA. = 125+45.10</p>	<p>PROP. CURVE-39 PI STA. = 125+87.76 Δ = 5° 38' 17" (LT) D = 28° 38' 52" R = 200.00' T = 9.85' L = 19.68' E = 0.24' P.C. STA. = 125+77.91 P.T. STA. = 125+97.59</p>
<p>PROP. CURVE-40 PI STA. = 127+25.60 Δ = 9° 32' 19" (LT) D = 57' 17' 45" R = 100.00' T = 8.34' L = 16.65' E = 0.35' P.C. STA. = 127+17.26 P.T. STA. = 127+33.91</p>	<p>PROP. CURVE-41 PI STA. = 127+63.29 Δ = 9° 30' 57" (RT) D = 57' 17' 45" R = 100.00' T = 8.32' L = 16.61' E = 0.35' P.C. STA. = 127+54.97 P.T. STA. = 127+71.57</p>	<p>PROP. CURVE-42 PI STA. = 131+99.88 Δ = 11° 27' 33" D = 11° 27' 33" R = 500.00' T = 40.28' L = 80.40' E = 1.62' P.C. STA. = 131+59.59 P.T. STA. = 132+39.99</p>	<p>PROP. CURVE-43 PI STA. = 132+73.68 Δ = 8° 41' 39" (LT) D = 28° 38' 52" R = 500.00' T = 15.20' L = 30.35' E = 0.58' P.C. STA. = 132+58.47 P.T. STA. = 132+88.82</p>	<p>PROP. CURVE-44 PI STA. = 134+54.60 Δ = 6° 17' 30" (LT) D = 11° 27' 33" R = 500.00' T = 27.48' L = 54.91' E = 0.75' P.C. STA. = 134+27.12 P.T. STA. = 134+82.02</p>	<p>PROP. CURVE-45 PI STA. = 135+48.49 Δ = 6° 34' 32" (RT) D = 11° 27' 33" R = 500.00' T = 28.72' L = 57.38' E = 0.82' P.C. STA. = 135+19.77 P.T. STA. = 135+77.15</p>	<p>PROP. CURVE-46 PI STA. = 144+98.15 Δ = 2° 00' 02" (LT) D = 5° 43' 46" R = 1,000.00' T = 17.46' L = 34.92' E = 0.15' P.C. STA. = 144+80.69 P.T. STA. = 145+15.61</p>						

NOTE:
FOR CONTROL POINTS AND BENCHMARKS SEE SHEET 5

REVISIONS	
NAME	DATE

ILLINOIS DEPARTMENT OF TRANSPORTATION

ALIGNMENT AND TIES

LIES ROAD BICYCLE PATH
FAIR OAKS ROAD TO GARY AVENUE
STATION 63+00 TO STATION 149+47.44

DATE 10/31/05
DRAWN BY MTL
CHECKED BY SRF

0 50' 100'
1" = 100'

