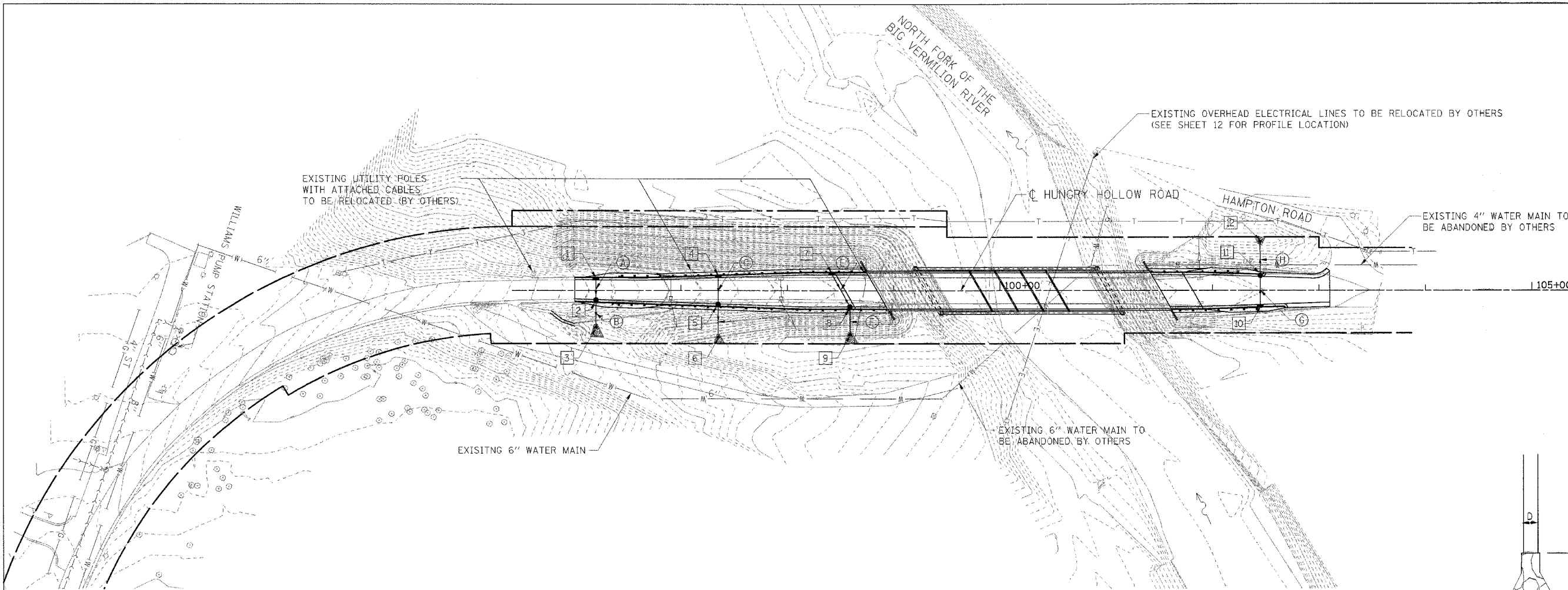


FAU RTE	SECTION	COUNTY	TOTAL SHEETS	SHEET NO.
7000	02-00212-00-BR	VERMILION	59	14
FROM STA. 96+00.00 TO STA. 103+10.10				
FED. ROAD DIST. NO.		ILLINOIS	FED. AID PROJECT	
CONTRACT NO. 91285				

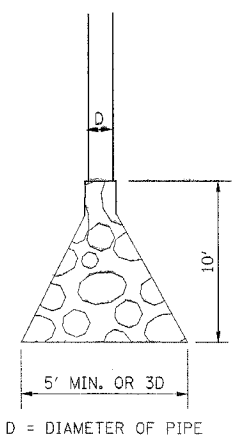


NUMBER	TYPE	STATION	OFFSET	RIM	INVERT EAST	INVERT WEST
1	INLETS, TYPE B TYPE 24 FRAME & GRATE	96+20.00	10.72' LT	562.44	558.81	
2	CATCH BASINS, TYPE A, 4' DIA. TYPE 24 FRAME & GRATE	96+20.00	8.44' RT	562.47	557.93	558.50
3	END SECTIONS 12"	96+20.00	32.26' RT			557.60
4	INLETS, TYPE B TYPE 24 FRAME & GRATE	97+35.00	12.80' LT	557.95	554.33	
5	CATCH BASINS, TYPE A, 4' DIA. TYPE 24 FRAME & GRATE	97+35.00	12.30' RT	557.95	552.58	553.68
6	END SECTIONS 12"	97+35.00	40.90' RT			549.38
7	INLETS, TYPE B TYPE 24 FRAME & GRATE	98+41.74	15.00' LT	555.65	552.03	
8	CATCH BASINS, TYPE A, 4' DIA. TYPE 24 FRAME & GRATE	98+59.00	15.00' RT	555.43	548.06	551.07
9	END SECTIONS 12"	98+59.00	39.73' RT			545.33
10	INLETS, TYPE B TYPE 24 FRAME & GRATE	102+45.00	13.20' RT	550.67	547.04	
11	CATCH BASINS, TYPE A, 4' DIA. TYPE 24 FRAME & GRATE	102+45.00	13.17' LT	550.67	546.34	545.29
12	END SECTIONS 12"	102+45.00	42.13' LT		542.06	

I.D.	TYPE	LENGTH	SLOPE	TRENCH BACKFILL (CU YD)
A	PIPE CULVERTS, TYPE 1, RCCP 12"	15.68'	2.0%	7.56
B	PIPE CULVERTS, TYPE 1, RCCP 12"	21.83'	1.5%	1.66
C	PIPE CULVERTS, TYPE 1, RCCP 12"	21.59'	3.0%	11.09
D	PIPE CULVERTS, TYPE 1, RCCP 12"	27.38'	12.0%	1.92
E	PIPE CULVERTS, TYPE 1, RCCP 12"	32.00'	3.0%	16.74
F	PIPE CULVERTS, TYPE 1, RCCP 12"	23.37'	12.0%	2.57
G	PIPE CULVERTS, TYPE 1, RCCP 12"	23.39'	3.0%	12.16
H	PIPE CULVERTS, TYPE 1, RCCP 12"	27.72'	12.0%	1.93

LEGEND

- PROPOSED INLET
- PROPOSED CATCH BASIN
- ▲ PROPOSED END SECTION
- PROPOSED STORM SEWER
- ▲ PROPOSED RIP RAP
- I PROPOSED DRAINAGE STRUCTURE
- A PROPOSED DRAINAGE PIPE
- W — — — — W —
- EXISTING WATER MAIN
- E — — — — E —
- EXISTING ELECTRICAL LINE



STONE RIPRAP, CLASS A3  
PLAN VIEW, N.T.S.

NOTES

- SEE STANDARD 602001 FOR CATCH BASIN, TYPE A DETAILS.
- SEE STANDARD 602306 FOR INLET - TYPE B DETAILS.
- SEE STANDARD 604091 FOR TYPE 24 FRAME AND GRATE DETAILS.
- SEE STANDARD 542001 FOR REINFORCED CONCRETE END SECTIONS AND SHALL BE PAID FOR AT THE CONTRACT UNIT PRICE EACH FOR END SECTIONS 12".
- 12" RCP SHALL BE PAID FOR AT THE CONTRACT UNIT PRICE FOOT FOR PIPE CULVERTS, TYPE 1 RCCP 12".

NAME	DATE

CITY OF DANVILLE, ILLINOIS  
HUNGRY HOLLOW ROAD BRIDGE

DRAINAGE, UTILITIES &  
GRADING PLAN

SCALE: 1"=50'  
DATE: 12/06/05

DRAWN BY MRK  
CHECKED BY JRH

Y:\PROJECTS\2005\12152616\PROJECTS\DRG\DRG\dwg\HUNGROD\HUNGROD.DWG  
 12/07/2005 13:56:16  
 SA:\DOCUMENT\02336902\CIVIL\DRG\HUNGROD.DWG  
 V:\BROUWERS\BROUWERS.DWG  
 V:\LTD\OBERG.DWG  
 V:\DRACOPRO.DWG  
 V:\TERRACON.DWG  
 V:\CONOFFG.DWG  
 V:\R0000085.DWG  
 ROSSFF