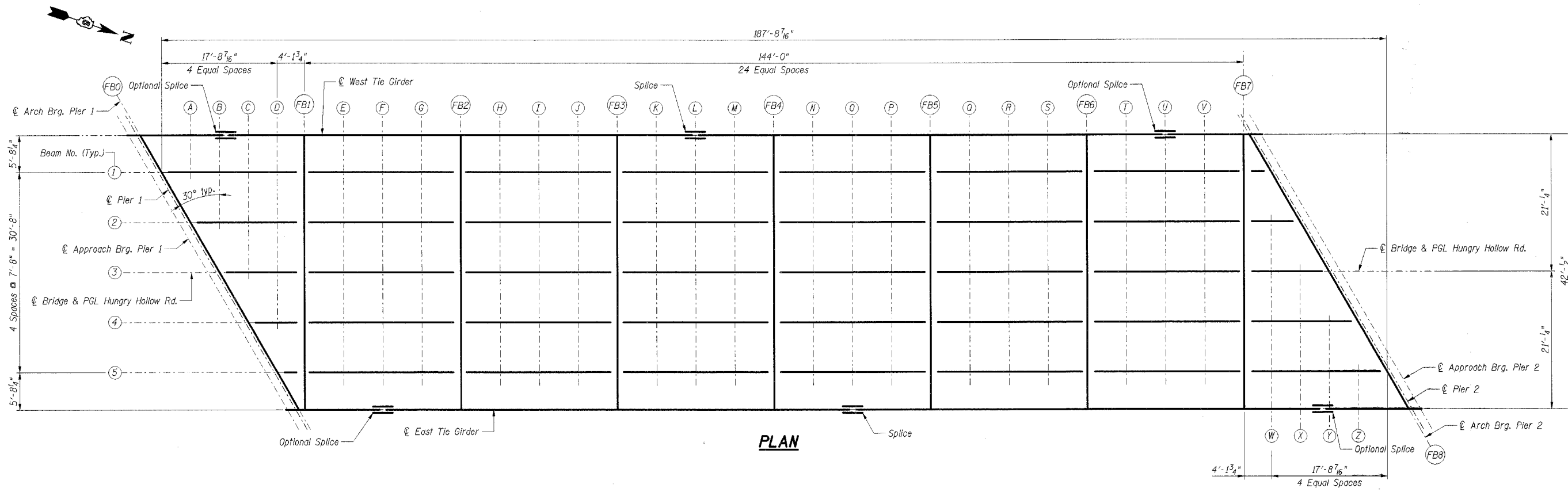
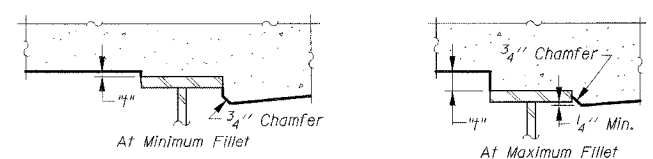


FAU RT#	SECTION	COUNTY	TOTAL SHEETS	SHEET NO.
7000	02-00212-00-BR	VERMILION	59	23
FROM STA. 96+00.00		TO STA. 103+10.10		
FED. ROAD DIST. NO.		ILLINOIS FED. AID PROJECT		

CONTRACT NO. 91285



PLAN



To determine "f": After all structural steel has been erected, elevations of the top flanges of the beams shall be taken at intervals shown above. These elevations subtracted from the "Theoretical Grade Elevations Adjusted for Dead Load Deflection" shown on Sht. S-09, minus slab thickness, equals the fillet heights "f" above top flange of beams.

**FILLET HEIGHTS**

Notes:  
1. Work this sheet with Sht. S-09.

**SHT. S-08 OF 40**

REVISIONS	
NAME	DATE

CITY OF DANVILLE, ILLINOIS  
HUNGRY HOLLOW ROAD BRIDGE  
**TOP OF DECK ELEVATIONS  
MAIN SPAN - I**

SCALE: \_\_\_\_\_ DRAWN BY LAR  
DATE 12/06/05 CHECKED BY JRH

**TENG**  
TENG & ASSOCIATES, INC.  
ENGINEERS ARCHITECTS INTERIORS  
202 N. MICHIGAN AVE. CHICAGO, IL 60601  
TELEPHONE 312.566.9900

ROSSFF

..\\TIB00029\LDON..\\FRP00P57.DGN 5:10 DOCUMENT 02336502 STRUCTURE\ONE\ONE\08\2.DGN  
12-07-2005 15:256